

## Bipolar transistor biasing circuits

This worksheet and all related files are licensed under the Creative Commons Attribution License, version 1.0. To view a copy of this license, visit <http://creativecommons.org/licenses/by/1.0/>, or send a letter to Creative Commons, 559 Nathan Abbott Way, Stanford, California 94305, USA. The terms and conditions of this license allow for free copying, distribution, and/or modification of all licensed works by the general public.

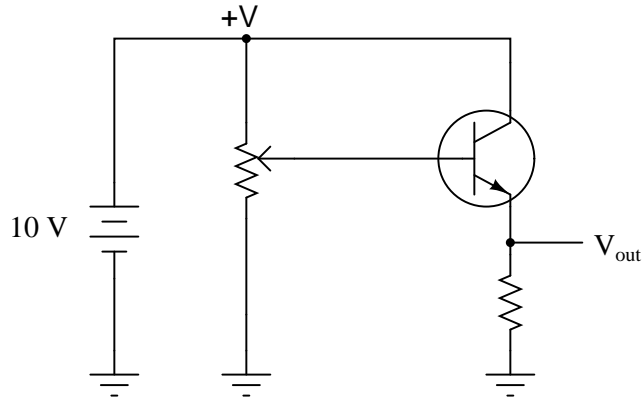
---

Resources and methods for learning about these subjects (list a few here, in preparation for your research):

## Questions

### Question 1

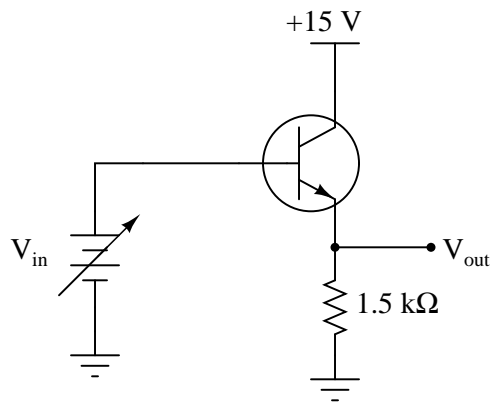
Describe what the output voltage of this transistor circuit will do (measured with reference to ground), if the potentiometer wiper begins at the full-down position (common with ground), and is slowly moved in the *upward* direction (closer to +V):



[file 02220](#)

### Question 2

Complete the table of output voltages for several given values of input voltage in this common-collector amplifier circuit. Assume that the transistor is a standard silicon NPN unit, with a nominal base-emitter junction forward voltage of 0.7 volts:



$V_{in}$	$V_{out}$
0.0 V	
0.5 V	
1.0 V	
1.5 V	
5.0 V	
7.8 V	

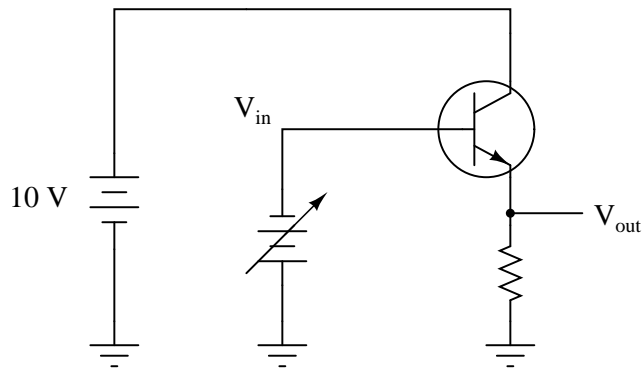
Based on the values you calculate, explain why the common-collector circuit configuration is often referred to as an *emitter follower*.

[file 02224](#)

---

Question 3

Describe what the output voltage of this transistor circuit will do (measured with reference to ground), if the input voltage ramps from 0 volts to -10 volts (measured with respect to ground):

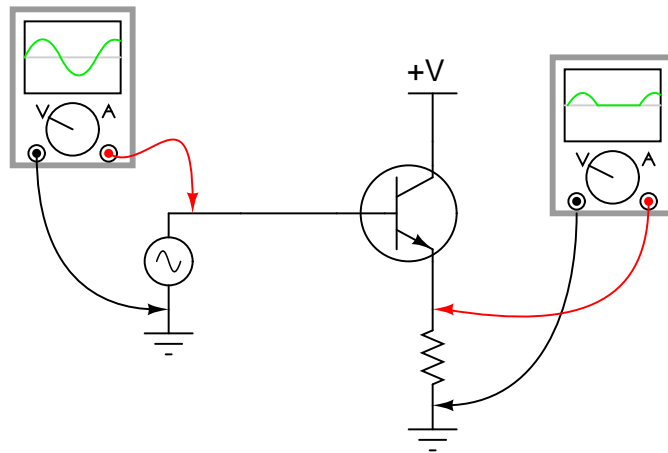


[file 02221](#)

---

Question 4

If we were to apply a sinusoidal AC signal to the input of this transistor amplifier circuit, the output would definitely *not* be sinusoidal:



It should be apparent that only portions of the input are being reproduced at the output of this circuit. The rest of the waveform seems to be "missing," being replaced by a flat line. Explain why this transistor circuit is not able to amplify the *entire* waveform.

[file 02222](#)

---

Question 5

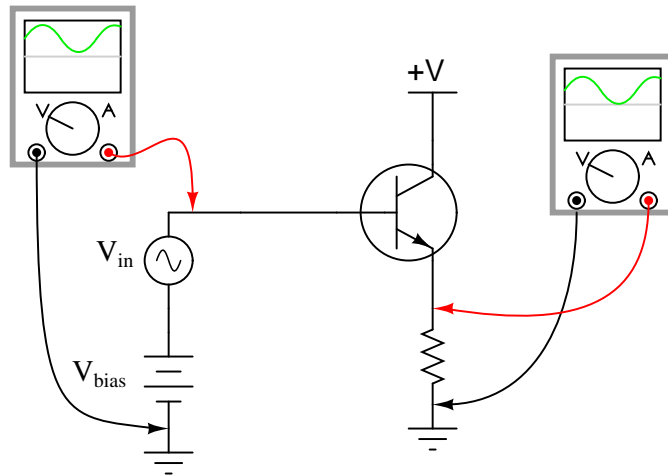
Explain what is meant by the phrase, "Class-A amplifier operation." What does it mean for a particular amplifier circuit to operate in "Class-A" mode?

[file 02483](#)

---

Question 6

Class-A operation may be obtained from this simple transistor circuit if the input voltage ( $V_{in}$ ) is "biased" with a series-connected DC voltage source:



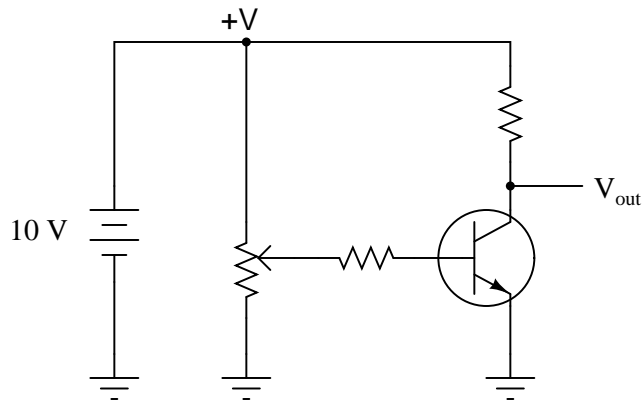
First, define what "Class A" amplifier operation is. Then, explain *why* biasing is required for this transistor to achieve it.

file 02223

---

Question 7

Describe what the output voltage of this transistor circuit will do (measured with reference to ground), if the potentiometer wiper begins at the full-down position (common with ground), and is slowly moved in the *upward* direction (closer to  $+V$ ):

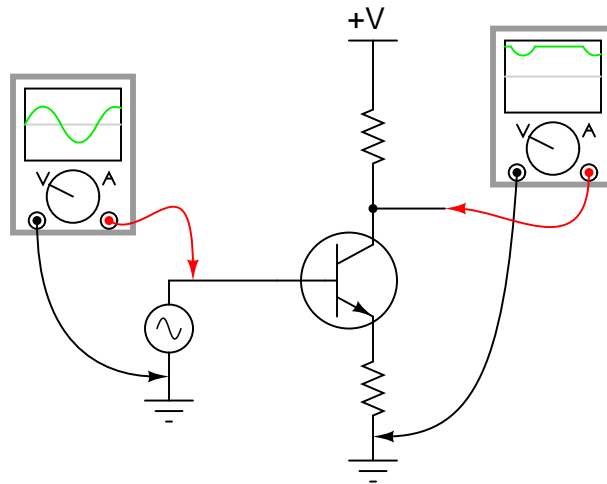


file 00822

---

Question 8

If we were to apply a sinusoidal AC signal to the input of this transistor amplifier circuit, the output would definitely *not* be sinusoidal:



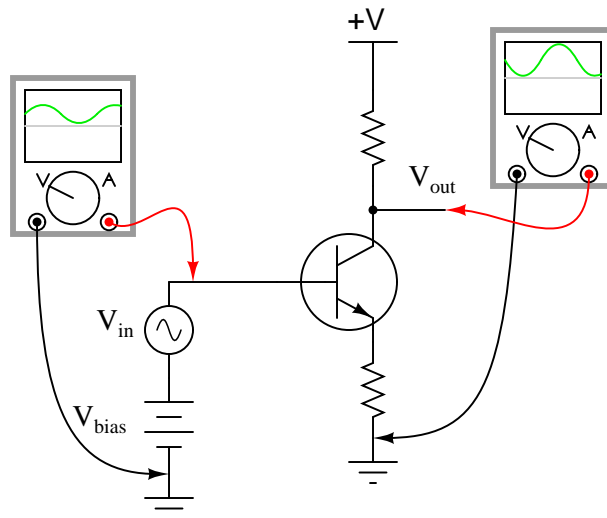
It should be apparent that only portions of the input are being amplified in this circuit. The rest of the waveform seems to be "missing" in the output, being replaced by a flat line. Explain why this transistor circuit is not able to amplify the entire waveform.

[file 00746](#)

---

Question 9

Class-A operation may be obtained from this simple transistor circuit if the input voltage ( $V_{in}$ ) is "biased" with a series-connected DC voltage source:

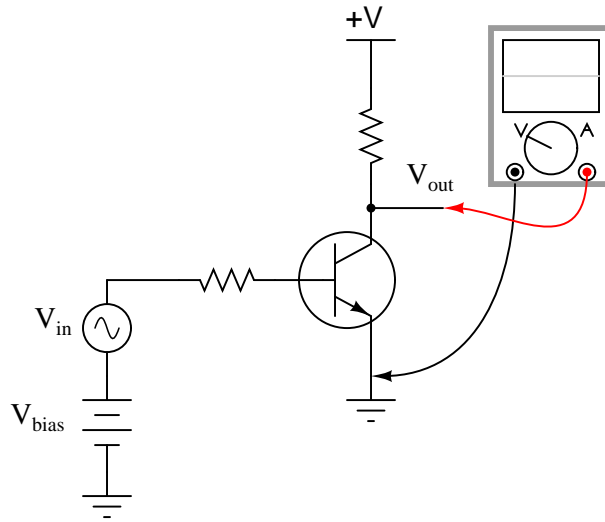


First, define what "Class A" amplifier operation is. Then, explain *why* biasing is required for this transistor to achieve it.

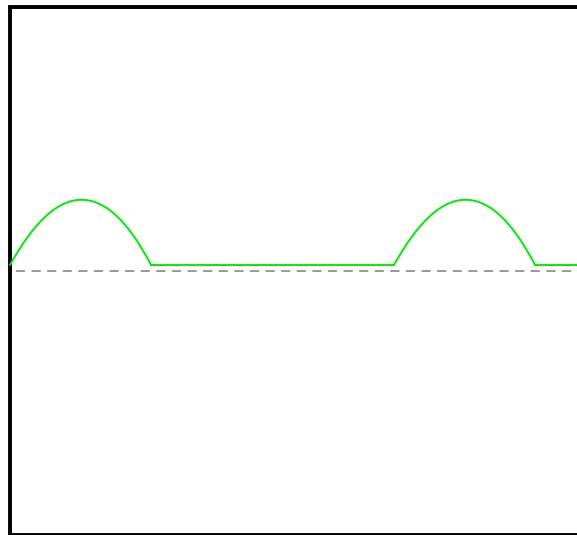
[file 00747](#)

Question 10

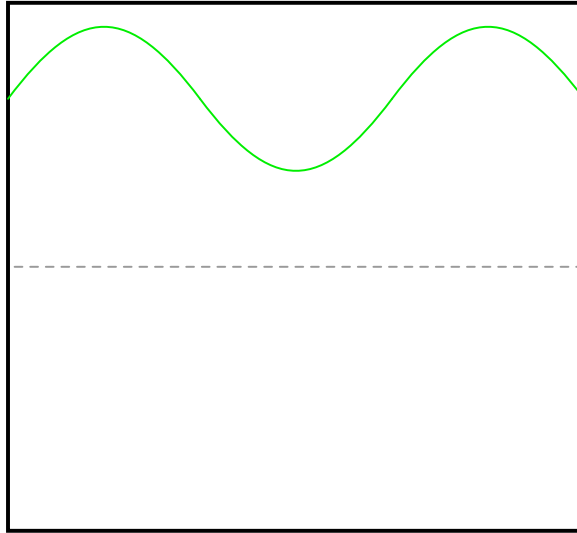
A student builds the following circuit and connects an oscilloscope to its output:



The waveform shown on the oscilloscope display looks like this:



Definitely not Class-A operation! Suspecting a problem with the input waveform, the student disconnects the oscilloscope probe from the amplifier output and moves it over to the amplifier input terminal. There, the following waveform is seen:



How can this amplifier circuit be producing such a distorted output waveform with such a clean input waveform? Explain your answer.

[file 00748](#)

---

#### Question 11

Suppose you were building a Class-A transistor amplifier for audio frequency use, but did not have an oscilloscope available to check the output waveform for the presence of "clipping" caused by improper biasing. You do, however, have a pair of audio headphones you may use to listen to the signals.

Explain how you would use a pair of headphones to check for the presence of severe distortion in a waveform.

[file 00751](#)

---

#### Question 12

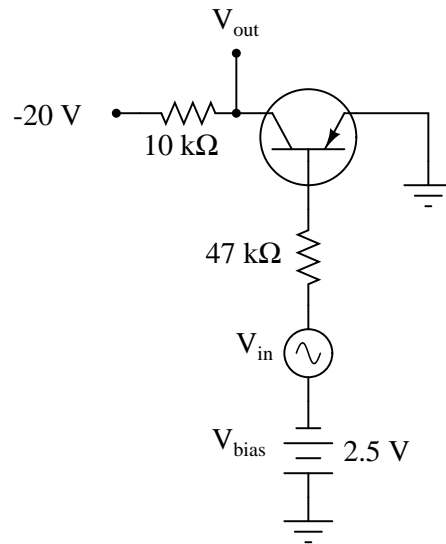
Explain how it is possible for a fault in the biasing circuitry of a transistor amplifier to completely kill the (AC) output of that amplifier. How and why can a shift in DC bias voltage have an effect on the AC signal being amplified?

[file 03741](#)

---

Question 13

Calculate the approximate quiescent (DC) base current for this transistor circuit, assuming an AC input voltage of 0 volts, and a silicon transistor:

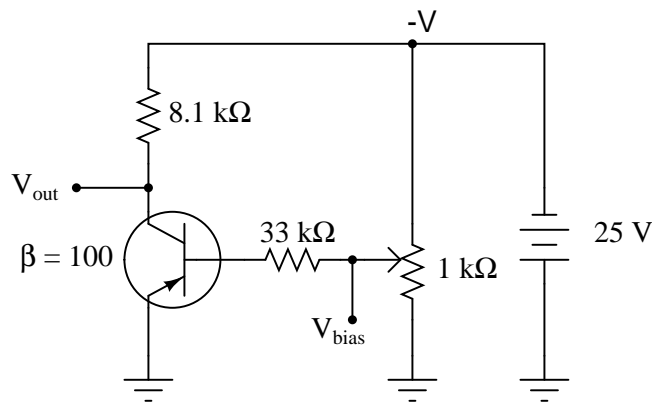


[file 00823](#)

---

Question 14

Calculate the potentiometer wiper voltage ( $V_{bias}$ ) required to maintain the transistor right at the threshold between cutoff and active mode. Then, calculate the input voltage required to drive the transistor right to the threshold between active mode and saturation. Assume ideal silicon transistor behavior, with a constant  $\beta$  of 100:

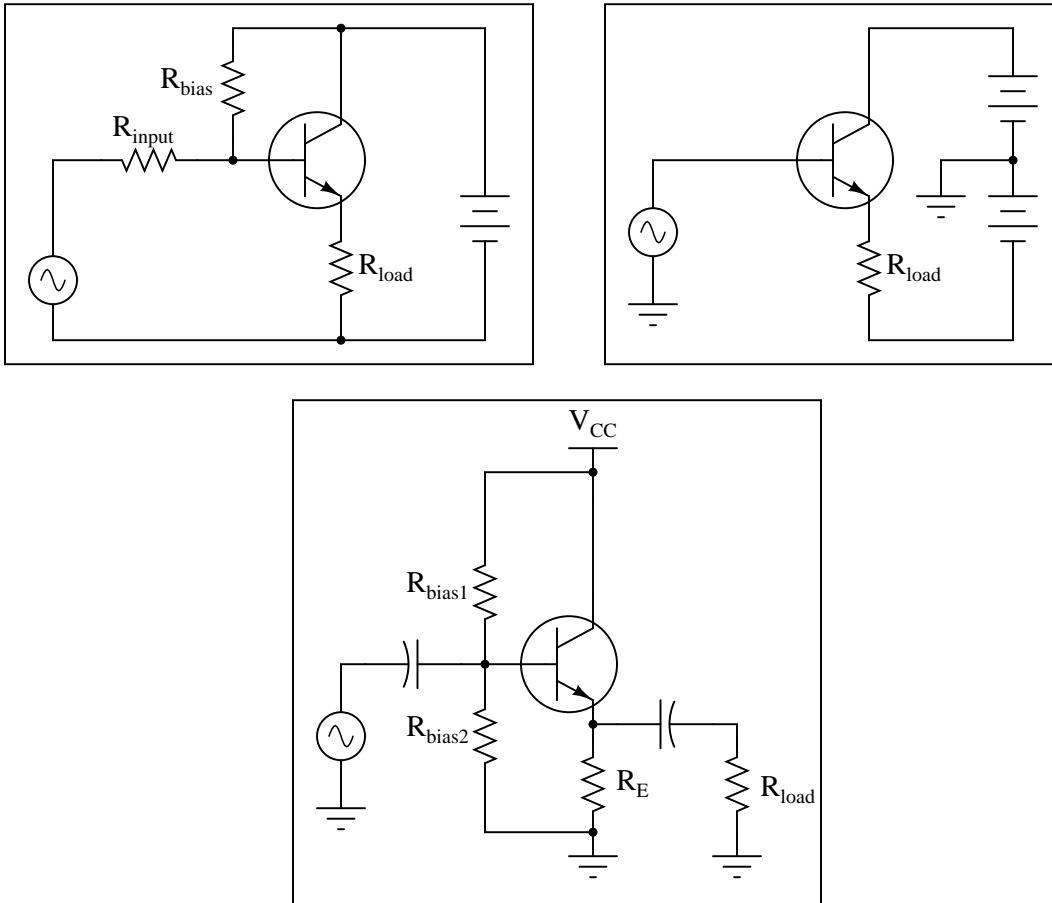


[file 00824](#)



Question 15

Explain how the following bias networks function:



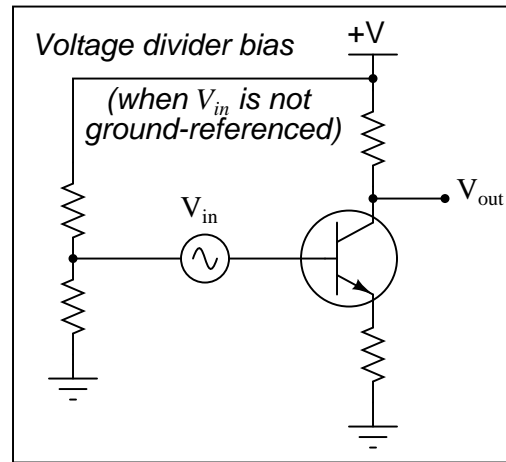
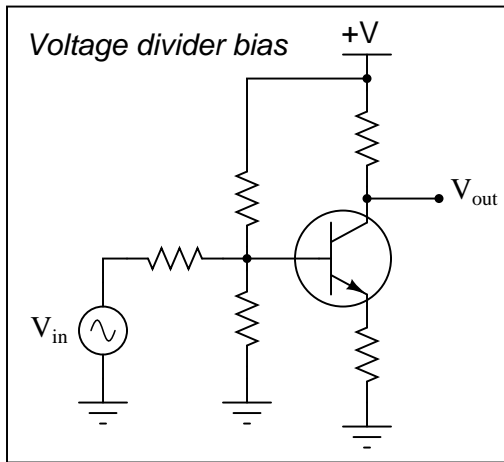
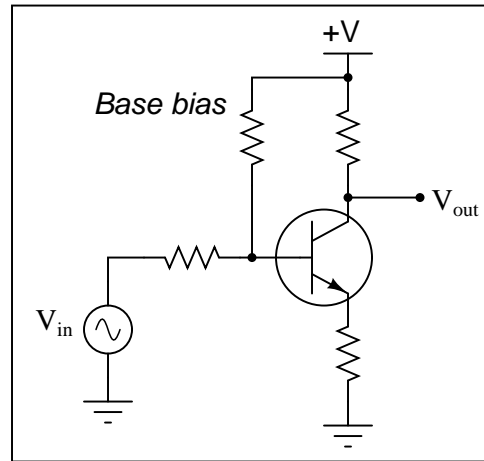
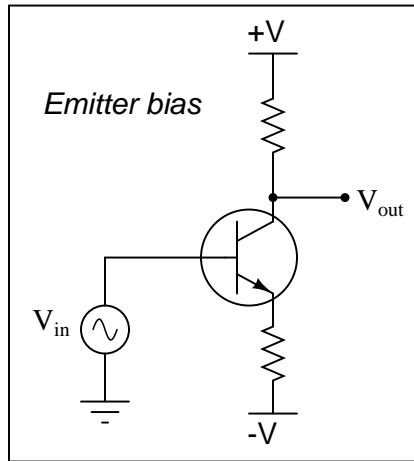
Each one has the same basic purpose, but works in a different way to accomplish it. Describe the purpose of any biasing network in an AC signal amplifier, and comment on the different means of accomplishing this purpose employed by each of the three circuits.

Hint: imagine if the AC signal source in each circuit were turned off (replaced with a short). Explain how each biasing network maintains the transistor in a partially "on" state at all times even with no AC signal input.

file 02229

Question 16

Explain how the following bias networks function:

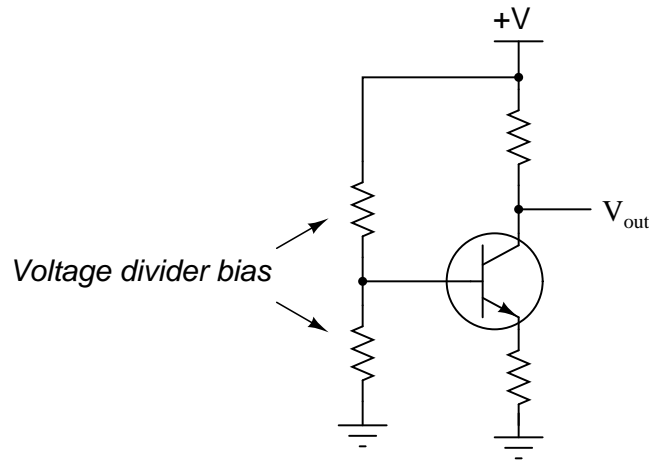


Each one has the same basic purpose, but works in a different way to accomplish it. Describe the purpose of any biasing network in an AC signal amplifier, and comment on the different means of accomplishing this purpose employed by each of the three circuits.

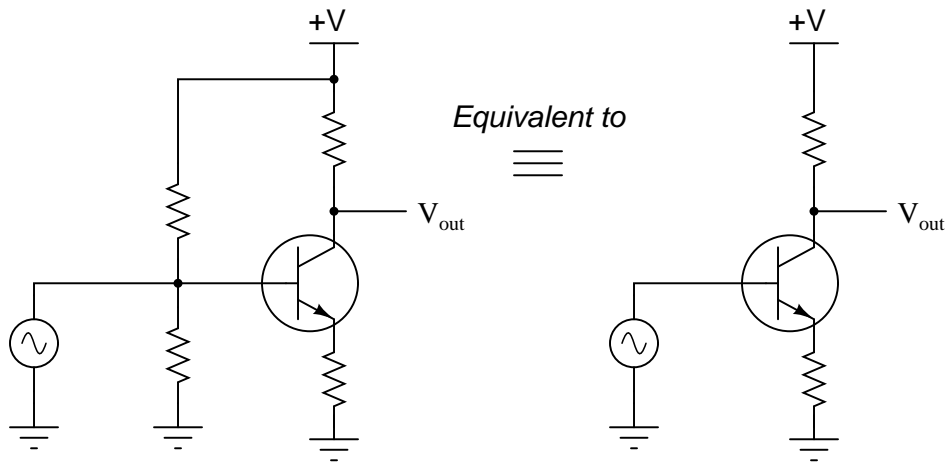
file 00749

Question 17

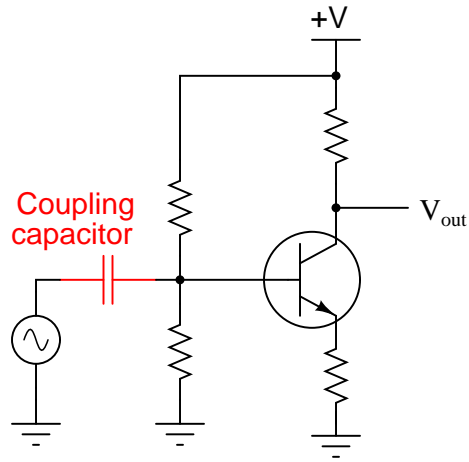
A *very* common method of providing bias voltage for transistor amplifier circuits is with a voltage divider:



However, if we were to directly connect a source of AC signal voltage to the junction between the two voltage divider resistors, the circuit would most likely function as if there were no voltage divider network in place at all:



Instead, circuit designers usually place a *coupling capacitor* between the signal source and the voltage divider junction, like this:

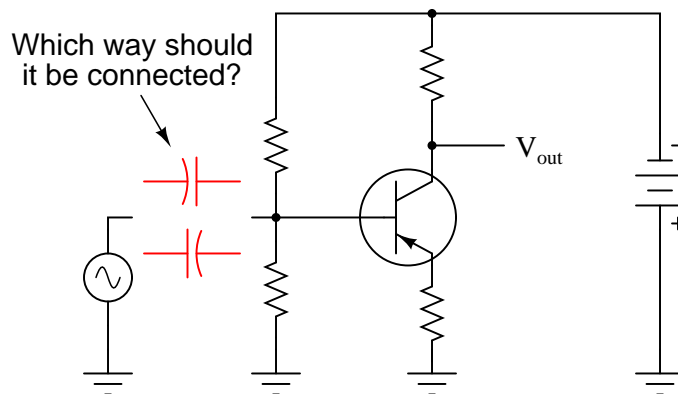


Explain why a coupling capacitor is necessary to allow the voltage divider to work in harmony with the AC signal source. Also, identify what factors would be relevant in deciding the size of this coupling capacitor.

file 01591

Question 18

When inserting a signal coupling capacitor into the bias network for this transistor amplifier, which way should the (polarized) capacitor go? (Hint: the AC signal source outputs pure AC, with a time-averaged DC value of 0 volts).



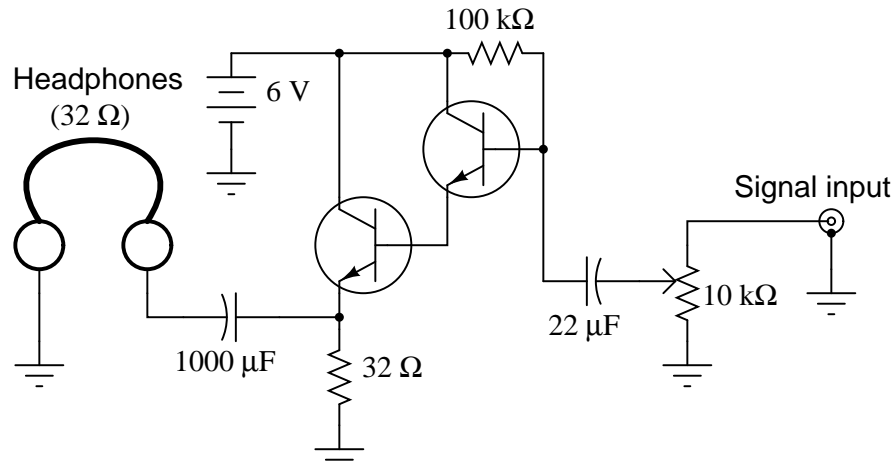
Explain why the orientation of this capacitor matters, and what might happen if it is connected the wrong way.

file 01592

---

Question 19

Describe how proper biasing is accomplished in this headphone amplifier circuit (suitable for amplifying the audio output of a small radio):



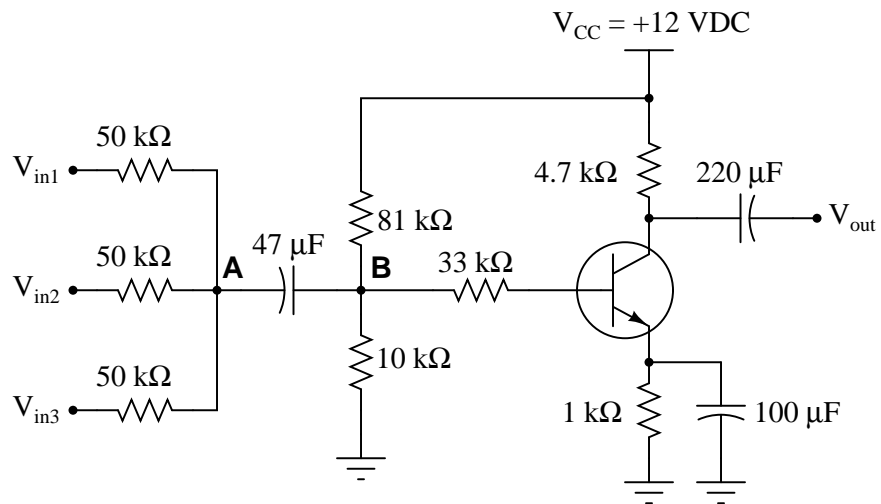
Also, describe the functions of the 10 kΩ potentiometer and the 22 μF capacitor.

[file 00750](#)

---

Question 20

The following circuit is a three-channel audio *mixer* circuit, used to blend and amplify three different audio signals (coming from microphones or other signal sources):



Suppose we measured a 9 kHz sinusoidal voltage of 0.5 volts (peak) at point "A" in the diagram, using an oscilloscope. Determine the voltage at point "B" in the circuit, after this AC signal voltage "passes through" the voltage divider biasing network.

The voltage at point "B" will be a mix of AC and DC, so be sure to express both quantities! Ignore any "loading" effects of the transistor's base current on the voltage divider.

[file 00825](#)

**Don't just sit there! Build something!!**

Learning to mathematically analyze circuits requires much study and practice. Typically, students practice by working through lots of sample problems and checking their answers against those provided by the textbook or the instructor. While this is good, there is a much better way.

You will learn much more by actually *building and analyzing real circuits*, letting your test equipment provide the "answers" instead of a book or another person. For successful circuit-building exercises, follow these steps:

1. Carefully measure and record all component values prior to circuit construction, choosing resistor values high enough to make damage to any active components unlikely.
2. Draw the schematic diagram for the circuit to be analyzed.
3. Carefully build this circuit on a breadboard or other convenient medium.
4. Check the accuracy of the circuit's construction, following each wire to each connection point, and verifying these elements one-by-one on the diagram.
5. Mathematically analyze the circuit, solving for all voltage and current values.
6. Carefully measure all voltages and currents, to verify the accuracy of your analysis.
7. If there are any substantial errors (greater than a few percent), carefully check your circuit's construction against the diagram, then carefully re-calculate the values and re-measure.

When students are first learning about semiconductor devices, and are most likely to damage them by making improper connections in their circuits, I recommend they experiment with large, high-wattage components (1N4001 rectifying diodes, TO-220 or TO-3 case power transistors, etc.), and using dry-cell battery power sources rather than a benchtop power supply. This decreases the likelihood of component damage.

As usual, avoid very high and very low resistor values, to avoid measurement errors caused by meter "loading" (on the high end) and to avoid transistor burnout (on the low end). I recommend resistors between 1 k $\Omega$  and 100 k $\Omega$ .

One way you can save time and reduce the possibility of error is to begin with a very simple circuit and incrementally add components to increase its complexity after each analysis, rather than building a whole new circuit for each practice problem. Another time-saving technique is to re-use the same components in a variety of different circuit configurations. This way, you won't have to measure any component's value more than once.

[file 00505](#)

## Answers

---

Answer 1

$V_{out}$  will increase, from 0 volts to approximately 9.3 volts (assuming a silicon transistor with a nominal base-emitter voltage drop of 0.7 volts), as the potentiometer wiper is moved closer to +V.

Follow-up question: based on this result, would you be inclined to call this amplifier an *inverting* or a *noninverting* circuit?

---

Answer 2

$V_{in}$	$V_{out}$
0.0 V	0.0 V
0.5 V	0.0 V
1.0 V	0.3 V
1.5 V	0.8 V
5.0 V	4.3 V
7.8 V	7.1 V

The voltage at the transistor's emitter terminal approximately "follows" the voltage applied to the base terminal, hence the name.

---

Answer 3

Trick question!  $V_{out}$  will remain at 0 volts the entire time.

---

Answer 4

Transistors are essentially DC devices, not AC devices. Consider the base-emitter PN junction that the input signal is sent to: it can only conduct in one direction (base positive and emitter negative).

---

Answer 5

"Class-A" amplifier operation means that the final (power) transistor duplicates the entire waveshape of the input signal, and not just a part of it.

---

Answer 6

"Class A" amplifier operation is when the transistor remains in its "active" mode (conducting current) throughout the entire waveform. Biasing may be thought of as a kind of "trick" used to get the transistor (a DC device) to "think" it is amplifying DC when the input signal is really AC.

---

Answer 7

$V_{out}$  will decrease, from +10 volts to nearly zero volts, as the potentiometer wiper is moved closer to +V.

Follow-up question: based on this result, would you be inclined to call this amplifier an *inverting* or a *noninverting* circuit?

---

Answer 8

Transistors are essentially DC devices, not AC devices. Consider the base-emitter PN junction that the input signal is sent to: it can only conduct in one direction (base positive and emitter negative).

---

Answer 9

"Class A" amplifier operation is when the transistor remains in its "active" mode (conducting current) throughout the entire waveform. Biasing may be thought of as a kind of "trick" used to get the transistor (a DC device) to "think" it is amplifying DC when the input signal is really AC.

---

Answer 10

The DC bias voltage ( $V_{bias}$ ) is excessive.

---

Answer 11

Set the signal generator to "sine-wave," and the aural difference between a pure sine wave and a distorted ("clipped") sine wave will be very apparent.

---

Answer 12

If the DC bias voltage shifts far enough away from the normal (quiescent) levels, the transistor may be forced into saturation or cutoff so it cannot reproduce the AC signal.

---

Answer 13

$$I_B = 38.3 \mu\text{A}$$

---

Answer 14

At the threshold between cutoff and active mode,  $V_{bias} = -0.7$  volts

At the threshold between active mode and saturation,  $V_{bias} = -1.72$  volts (assuming 0 volts  $V_{CE}$  at saturation)

Follow-up question: if we were using the potentiometer to establish a bias voltage for an AC signal, what amount of DC bias voltage would place the transistor directly between these two extremes of operation (cutoff versus saturation), so as to allow the AC input signal to "swing" equal amounts positive and negative at the distortion limit? In other words, what voltage setting is exactly between -0.7 volts and -1.72 volts?

---

Answer 15

The purpose of any biasing network in an AC signal amplifier is to provide just enough quiescent current through the base to keep the transistor between the extremes of cutoff and saturation throughout the input signal's waveform cycle.

---

Answer 16

The purpose of any biasing network in an AC signal amplifier is to provide just enough quiescent current through the base to keep the transistor between the extremes of cutoff and saturation throughout the input signal's waveform cycle.

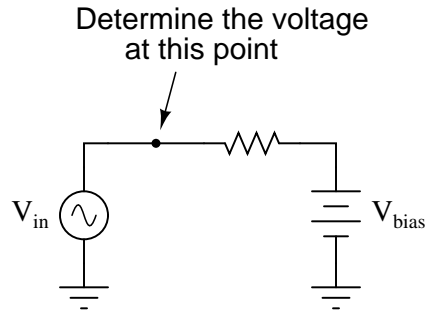


---

Answer 17

A very good way to understand the AC source's effect on the voltage divider with and without the capacitor is to use *Superposition Theorem* to determine what each source (AC signal, and DC power supply) will do separately.

If this concept is still not clear, consider this circuit:

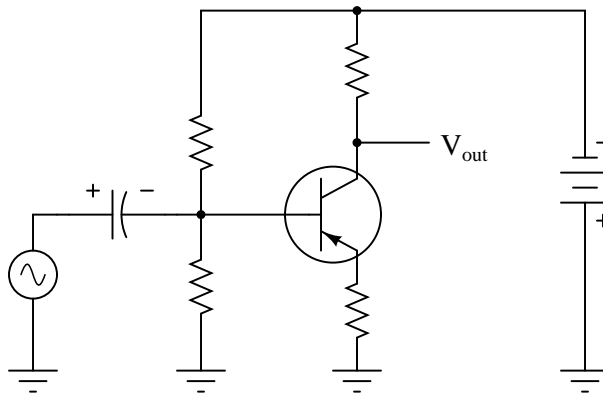


As far as capacitor size is concerned, it should be large enough that its reactance is negligible. I'll let you determine what factors define negligibility in this context!

Follow-up question: which voltage source (AC or DC?) "wins" at the point specified in the above circuit? Explain why this is so, and then show how a suitably located capacitor would allow both voltage signals to co-exist at that point.

---

Answer 18



---

Answer 19

Biasing is accomplished through the 100 k $\Omega$  resistor. The 10 k $\Omega$  potentiometer is the volume control, and the 22  $\mu$ F capacitor serves to "couple" the input signal to the transistor's base, while blocking any DC bias voltage from being "fed back" to the audio signal source.

Challenge question: there is a name used to describe the dual-transistor configuration used in this circuit, where a pair of PNP or NPN transistors is cascaded, with the emitter of one going to the base of the other. What is this name, and what advantage does this configuration provide over a single transistor?

---

Answer 20

$$V_B = 1.318 \text{ VDC} + 0.5 \text{ VAC (peak)}$$

---

Answer 21

Let the electrons themselves give you the answers to your own "practice problems"!

## Notes

---

### Notes 1

Although this circuit is very simple, it is also very important to master. Be sure to discuss its operation thoroughly with your students, so they understand.

---

### Notes 2

At first, the "emitter follower" transistor circuit may seem pointless, since the output voltage practically equals the input voltage (especially for input voltages greatly exceeding 0.7 volts DC). "What possible good is a circuit like this?" some of your students may ask. The answer to this question, of course, has to do with *currents* in the circuit, and not necessarily voltages.

---

### Notes 3

This might not be the result many students expect! It is important, though, for them to understand the importance of polarity in transistor circuits. This example should make that abundantly clear.

---

### Notes 4

Sometimes it is helpful for students to re-draw the circuit using a transistor model showing the base-emitter junction as a diode. If you think this model would help some of your students understand the concept here, have another student draw the transistor model on the whiteboard, and use that drawing as a discussion aid. Like any PN junction, the base-emitter junction of a BJT only "wants" to conduct current in one direction.

---

### Notes 5

Of course, the natural question following this one is, "What other classes of operation are there?" This would be an excellent time to preview Class-B (push-pull) and Class-C operations if time permits.

---

### Notes 6

A "trick" it may be, but a very useful and very common "trick" it is! Discuss this concept with your students at length, being sure they have ample time and opportunity to ask questions of their own.

One question that may arise is, "how much DC bias voltage is necessary?" If no one asks this question, ask it yourself! Discuss with your students what would constitute the minimum amount of bias voltage necessary to ensure the transistor never goes into "cutoff" anywhere in the waveform's cycle, and also the maximum bias voltage to prevent the transistor from "saturating".

---

### Notes 7

Although this circuit is very simple, it is also very important to master. Be sure to discuss its operation thoroughly with your students, so they understand.

---

### Notes 8

Sometimes it is helpful for students to re-draw the circuit using a transistor model showing the base-emitter junction as a diode. If you think this model would help some of your students understand the concept here, have another student draw the transistor model on the whiteboard, and use that drawing as a discussion aid. Like any PN junction, the base-emitter junction of a BJT only "wants" to conduct current in one direction.

---

#### Notes 9

A "trick" it may be, but a very useful and very common "trick" it is! Discuss this concept with your students at length, being sure they have ample time and opportunity to ask questions of their own.

One question that may arise is, "how much DC bias voltage is necessary?" If no one asks this question, ask it yourself! Discuss with your students what would constitute the minimum amount of bias voltage necessary to ensure the transistor never goes into "cutoff" anywhere in the waveform's cycle, and also the maximum bias voltage to prevent the transistor from "saturating".

---

#### Notes 10

Ask your students how they can tell the difference between excessive biasing and insufficient biasing, by inspection of the output waveform. There is a difference to be seen, but it requires a good understanding of how the circuit works! Students may be tempted to simply memorize waveforms ("when I see this kind of waveform, I know the problem is excessive biasing . . ."), so prepare to challenge their understanding with questions such as:

- What polarity of input signal drives the transistor toward cutoff?
- What polarity of input signal drives the transistor toward saturation?
- Where on the output waveform is the transistor in cutoff (if at all)?
- Where on the output waveform is the transistor in saturation (if at all)?
- Where on the output waveform is the transistor in its active mode?

Another point worth mentioning: some students may be confused by the phasing of the input and output waveforms, comparing the two different oscilloscope displays. For a common-emitter (inverting) amplifier such as this, they expect to see the output voltage peak positive whenever the input voltage peaks negative, and visa-versa, but here the two oscilloscope displays show positive peaks occurring right next to the left-hand side of the screen. Why is this? Because the oscilloscope does not represent phase unless it is in dual-trace mode! When you disconnect the input probe and move it to another point in the circuit, any time reference is lost, the oscilloscope's triggering function placing the first waveform peak right where you tell it to, usually near the left-hand side of the display.

---

#### Notes 11

The answer I want for this question is not just a parroting of the answer I've given. Anyone can say "a distorted wave will sound different." I want to know *how* it sounds different, and this answer can only come by direct experimentation!

---

#### Notes 12

This question asks students to explore the possibility of complete AC signal failure due to a simple shift in DC bias, based on their understanding of how transistor amplifiers function. It may seem paradoxical that such a "small" fault could have such a large effect on an amplifier circuit, but it should make sense once students grasp how important bias is to class-A amplifier operation.

---

#### Notes 13

This circuit was purposely drawn in a convoluted fashion to force students to identify its configuration apart from the standard layout. Many people lack the spatial reasoning skills to do this easily, and require a lot of practice before they become proficient. Ask your more proficient students if they have any "tips" for helping those who struggle with problems like these. Are there any simple methods which we may use to re-draw this circuit in an easier-to-understand form?

---

Notes 14

If your students are experiencing difficulty analyzing this circuit, ask them to begin by calculating the transistor *currents* at the thresholds of cutoff and saturation.

A mathematical trick I've found helpful through the years for finding the midpoint between two values is to add the two values together and then divide by two. Challenge your students to use other means of calculating this midpoint value, though.

---

Notes 15

All three biasing techniques are commonly used in transistor amplifier circuitry, so it behooves each student to understand them well. In each case, resistors provide a "trickle" of current through the base of the transistor to keep it turned partially "on" at all times.

One exercise you might have your students do is come up to the board in front of the room and draw an example of this circuit, then everyone may refer to the drawn image when discussing the circuit's characteristics.

---

Notes 16

All three biasing techniques are commonly used in transistor amplifier circuitry, so it behooves each student to understand them well. In each case, resistors provide a "trickle" of current through the base of the transistor to keep it turned partially "on" at all times.

---

Notes 17

Many beginning students experience difficulty understanding the purpose of the coupling capacitor, and transistor amplifier biasing in general. Be sure to spend plenty of time discussing the principle of this circuit, because it is very commonplace in transistor circuitry.

---

Notes 18

It is easy to miss the detail of the power supply's polarity being "backward" from what is typically seen (negative instead of positive). Actually, I am surprised to see how many introductory textbooks have the coupling capacitor drawn the wrong way, so expect that some students may become confused by researching their texts for the answer!

---

Notes 19

This circuit is simple enough to assemble and test in an hour or two, on a solderless breadboard. It would make a great lab experiment, and can be used by the students outside of class!

---

Notes 20

Ask your students what purpose the 47  $\mu\text{F}$  capacitor serves. Since its presence does not noticeably attenuate the AC signal at point "A" (the whole 0.5 volts AC getting to point B), why not just replace it with a straight piece of wire?

It has been my experience that students require much practice with circuit analysis to become proficient. To this end, instructors usually provide their students with lots of practice problems to work through, and provide answers for students to check their work against. While this approach makes students proficient in circuit theory, it fails to fully educate them.

Students don't just need mathematical practice. They also need real, hands-on practice building circuits and using test equipment. So, I suggest the following alternative approach: students should *build* their own "practice problems" with real components, and try to mathematically predict the various voltage and current values. This way, the mathematical theory "comes alive," and students gain practical proficiency they wouldn't gain merely by solving equations.

Another reason for following this method of practice is to teach students *scientific method*: the process of testing a hypothesis (in this case, mathematical predictions) by performing a real experiment. Students will also develop real troubleshooting skills as they occasionally make circuit construction errors.

Spend a few moments of time with your class to review some of the "rules" for building circuits before they begin. Discuss these issues with your students in the same Socratic manner you would normally discuss the worksheet questions, rather than simply telling them what they should and should not do. I never cease to be amazed at how poorly students grasp instructions when presented in a typical lecture (instructor monologue) format!

A note to those instructors who may complain about the "wasted" time required to have students build real circuits instead of just mathematically analyzing theoretical circuits:

*What is the purpose of students taking your course?*

If your students will be working with real circuits, then they should learn on real circuits whenever possible. If your goal is to educate theoretical physicists, then stick with abstract analysis, by all means! But most of us plan for our students to do something in the real world with the education we give them. The "wasted" time spent building real circuits will pay huge dividends when it comes time for them to apply their knowledge to practical problems.

Furthermore, having students build their own practice problems teaches them how to perform *primary research*, thus empowering them to continue their electrical/electronics education autonomously.

In most sciences, realistic experiments are much more difficult and expensive to set up than electrical circuits. Nuclear physics, biology, geology, and chemistry professors would just love to be able to have their students apply advanced mathematics to real experiments posing no safety hazard and costing less than a textbook. They can't, but you can. Exploit the convenience inherent to your science, and *get those students of yours practicing their math on lots of real circuits!*