



Open Networking:

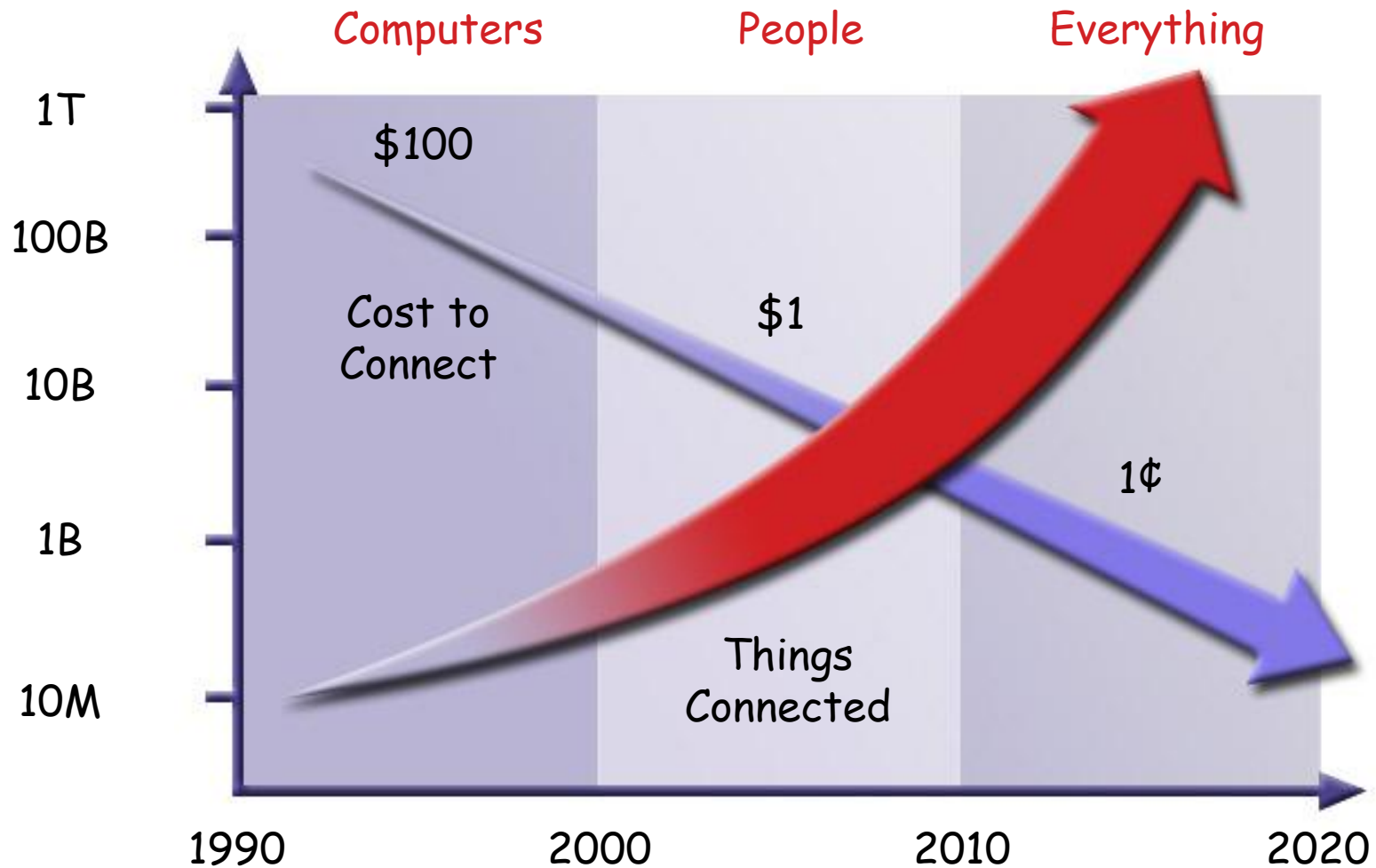
Investing for Fun and Profit

NEA[®]

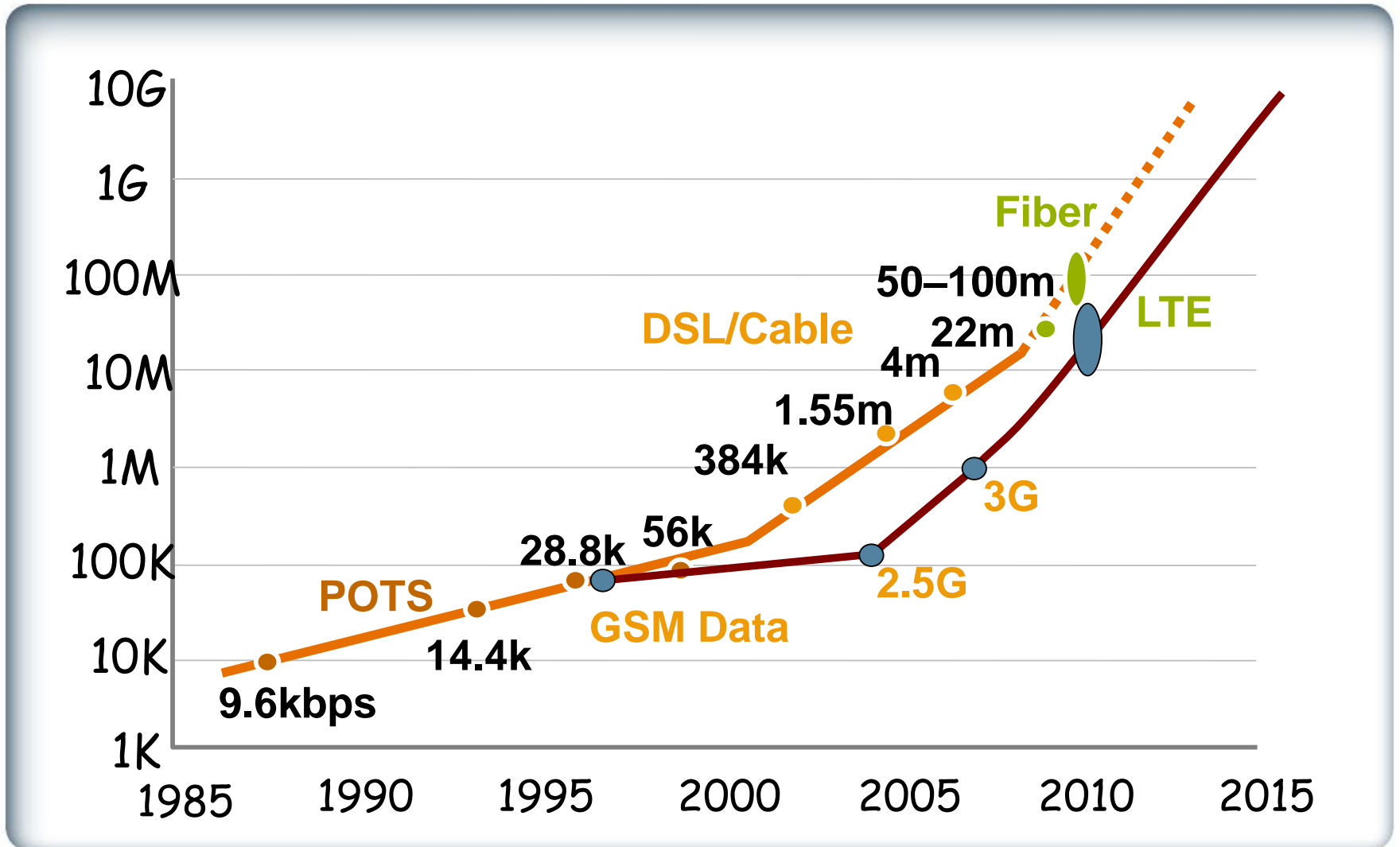
- ▶ Greg Papadopoulos
Venture Partner, NEA



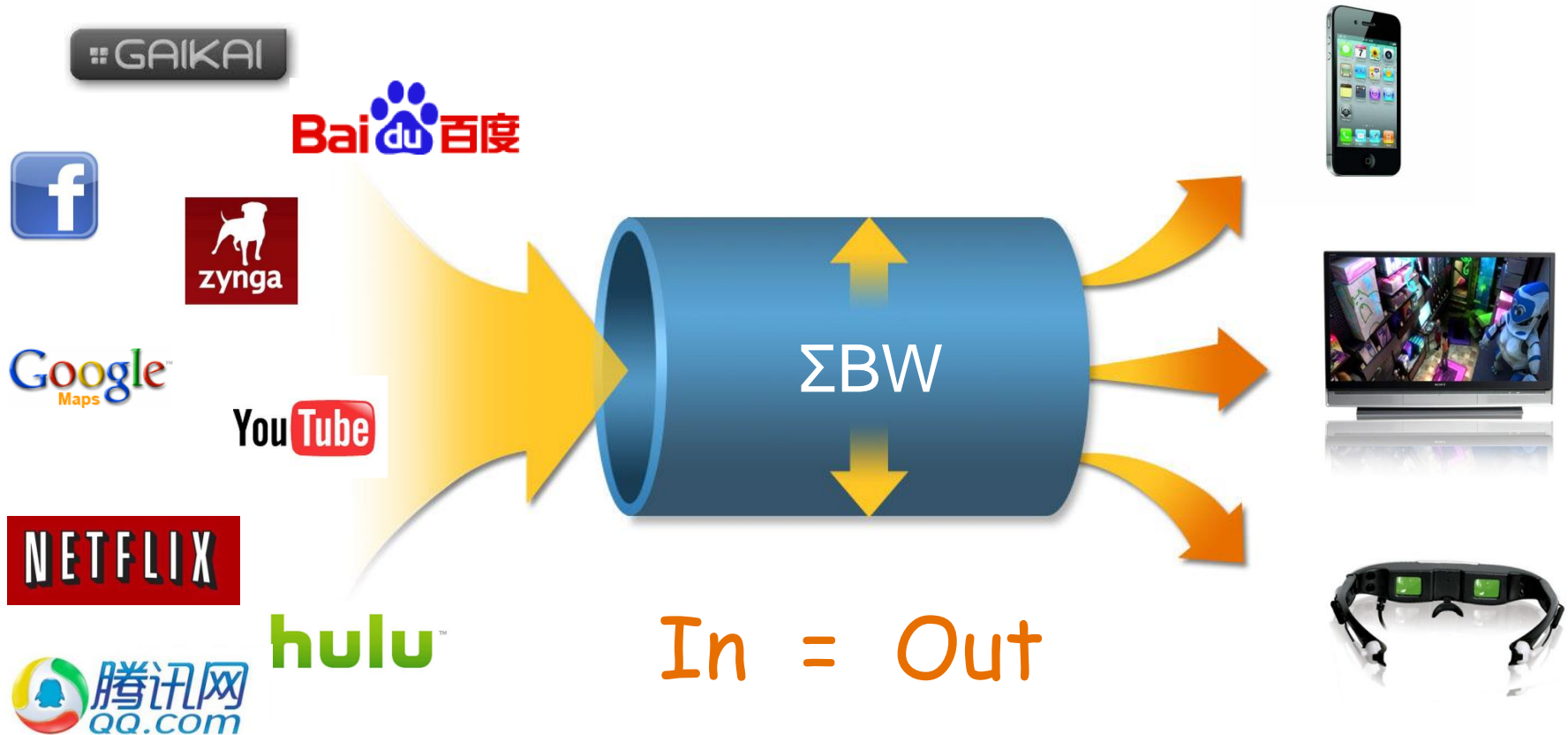
The Revolution



Consumer Access BW Inflection



“Kirchoff’s Law” : Filling the Pipe



$$\# \text{ Servers} * BW/\text{Server} = \# \text{ Devices} * BW/\text{Device}$$

Not Winner take all, but...

Big Computers

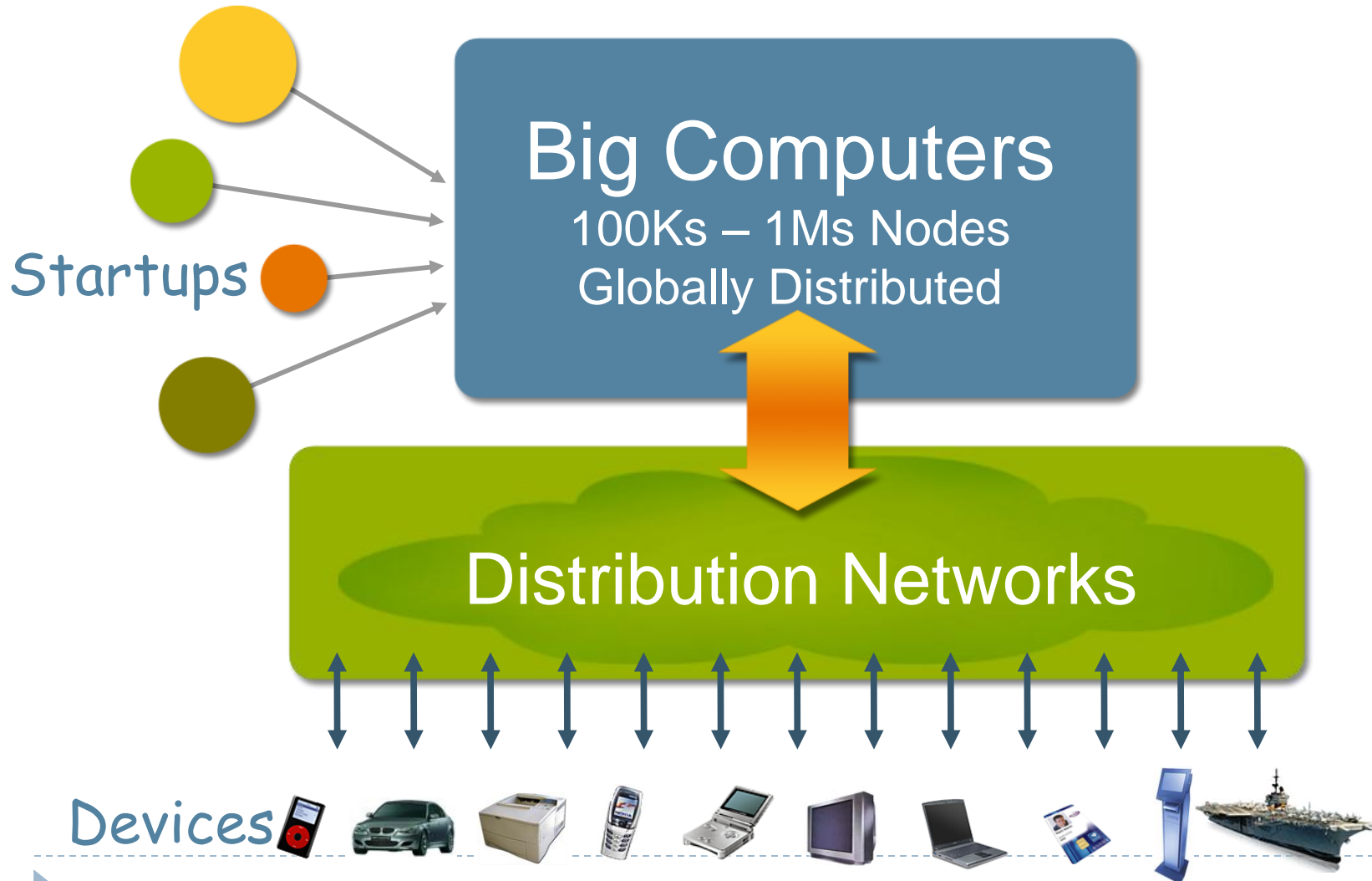
100Ks – 1Ms Nodes
Globally Distributed



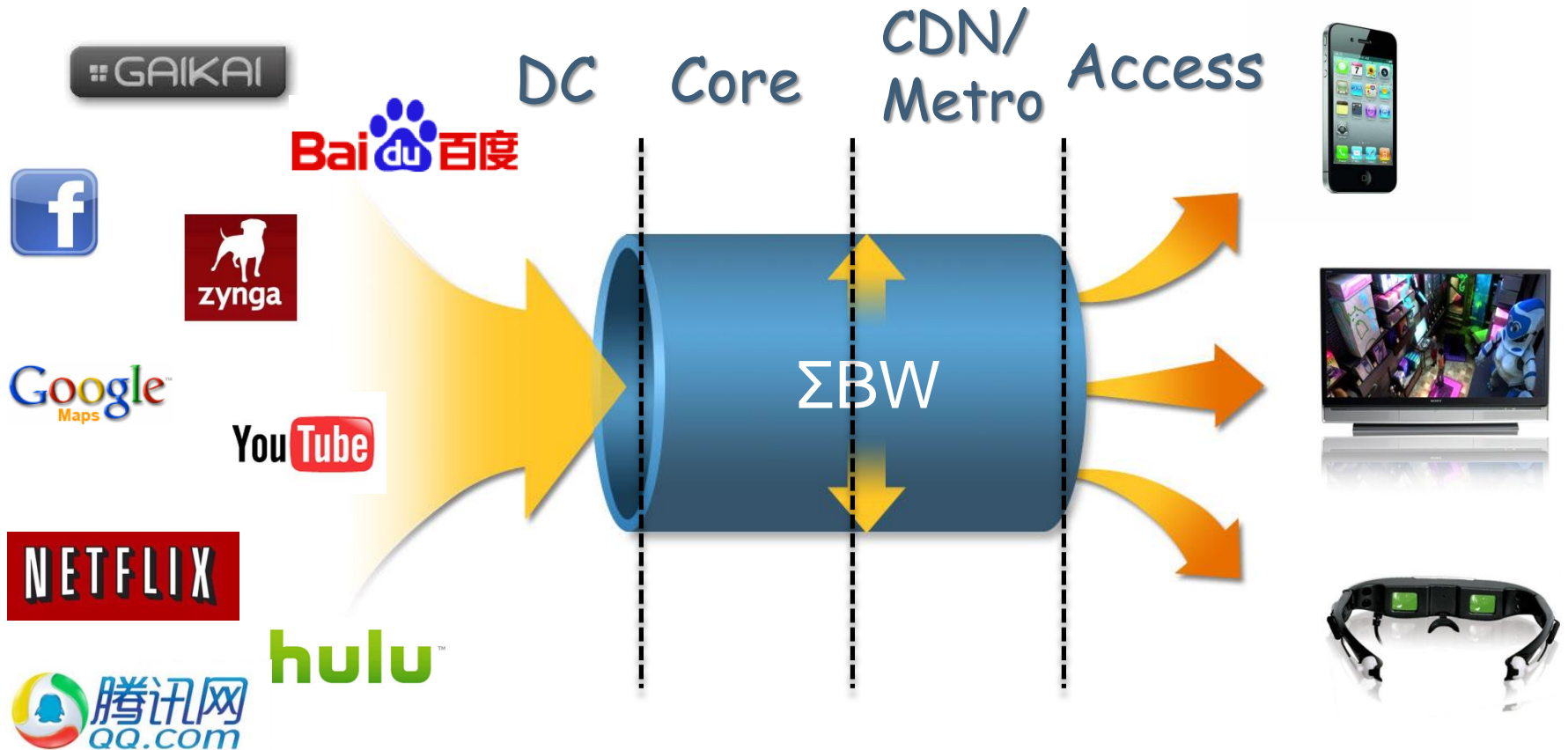
Devices



...A little more structure, perhaps



“Kirchoff’s Law” : Filling the Pipe



Bell's Law

Historical Cycle of Computing Industry, every 10 – 15 years

| System | When | Tech | Scale |
|---------------|-------------|-------------|--------------|
| MF | '60s | Trans/Core | 1+ |
| Minis | '70s | SSI/MSI | 1 |
| PC/WS | '80s | uP / LSI | 1 |
| SMP | '90s | VLSI / DRAM | 100 |



Bell's Law

Historical Cycle of Computing Industry, every 10 – 15 years

| System | When | Tech | Scale |
|---------------|-------------|---------------|-----------------|
| MF | '60s | Trans/Core | 1+ |
| Minis | '70s | SSI/MSI | 1 |
| PC/WS | '80s | uP / LSI | 1 |
| SMP | '90s | VLSI / DRAM | 100 |
| Cloud | '00s | SoC / Fast IP | 10 ⁴ |



Bell's Law

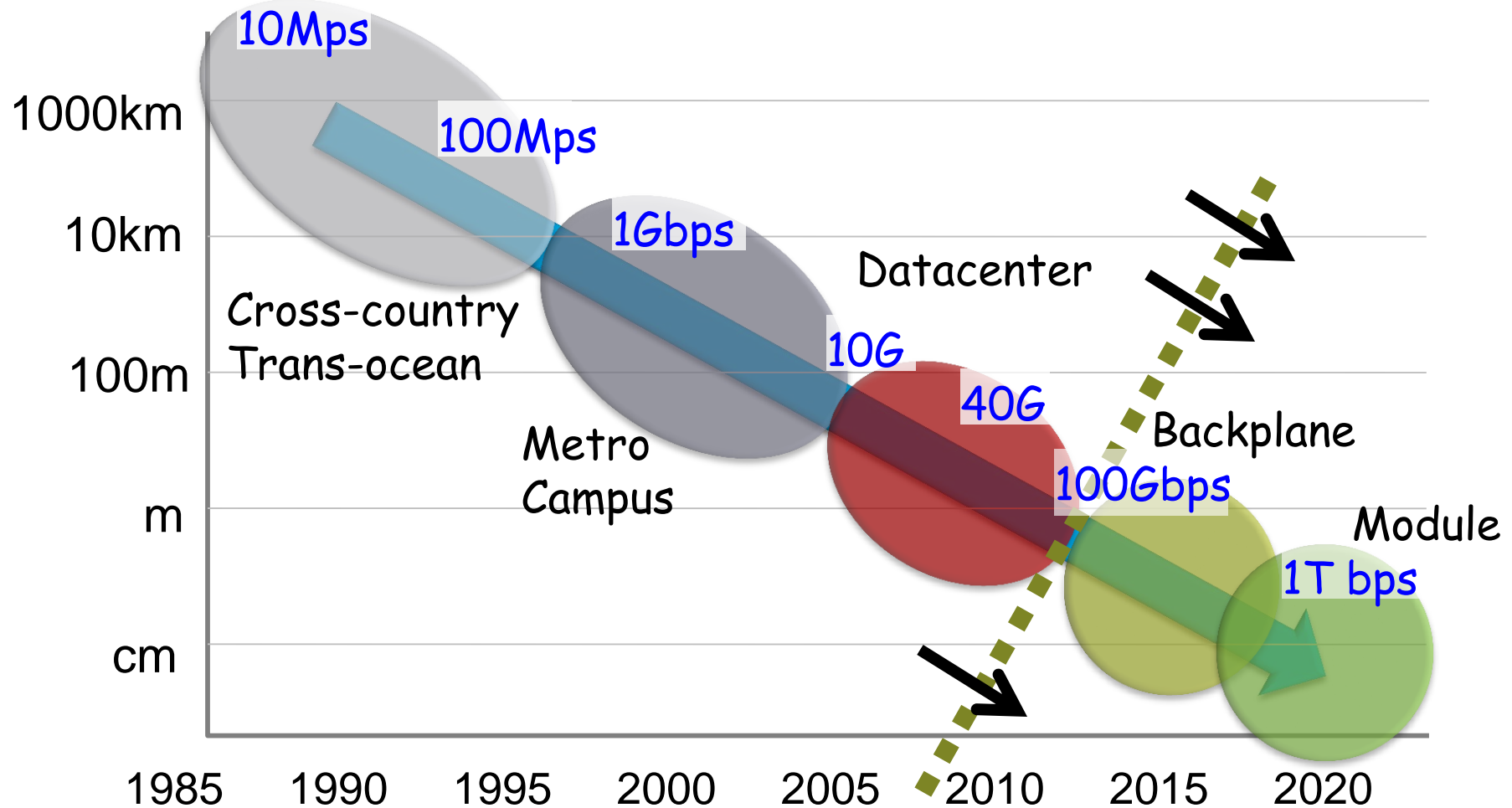
Historical Cycle of Computing Industry, every 10 – 15 years

| System | When | Tech | Scale |
|---------------|-------------|---------------|-----------------|
| MF | '60s | Trans/Core | 1+ |
| Minis | '70s | SSI/MSI | 1 |
| PC/WS | '80s | uP / LSI | 1 |
| SMP | '90s | VLSI / DRAM | 100 |
| Cloud | '00s | SoC / Fast IP | 10 ⁴ |
| Exascale | '10s | NoC/ Optics | 10 ⁶ |



Optical Watershed: Penetrating System Scales

Link Scale



What is the Difference Between...???

A Big Computer

A Set of Servers



$\times 10^4$

Vs.



What is the Difference Between...???

A Big Computer

A Set of Servers



$\times 10^4$

ITNS

vs.



Who's on First?

Bits have mass...



... and thus
inertia and
stickiness

Software has
developers...



... and thus
layers of value-
add

Networks are
the backplane...



... and thus
intermediate all
interactions

Storage

Servers

Networks



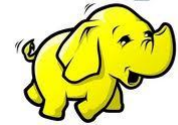
My Lens for Just About Everything

1. **Developers**
2. **Developers**
3. **Developers**
4. **Developer Tools**
5. **Developer Communities**
6. **Software Ecosystems**



App Store

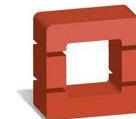
hadoop



redhat



Java



openstack



mongoDB



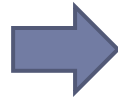
Disruptive Refactoring – Phase 1

Monolithic Systems



Disruptive Refactoring – Phase 1

Monolithic Systems



Decomposition & Specialization



L4-7

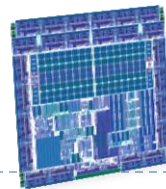
L1-3

Control

Mgt.

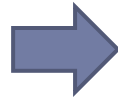
Applications

Network Operating Systems

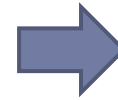


Disruptive Refactoring – Phase 2

Monolithic Systems



Decomposition & Specialization



Re-Integration



L4-7

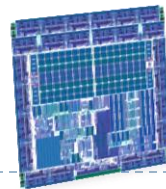
L1-3

Control

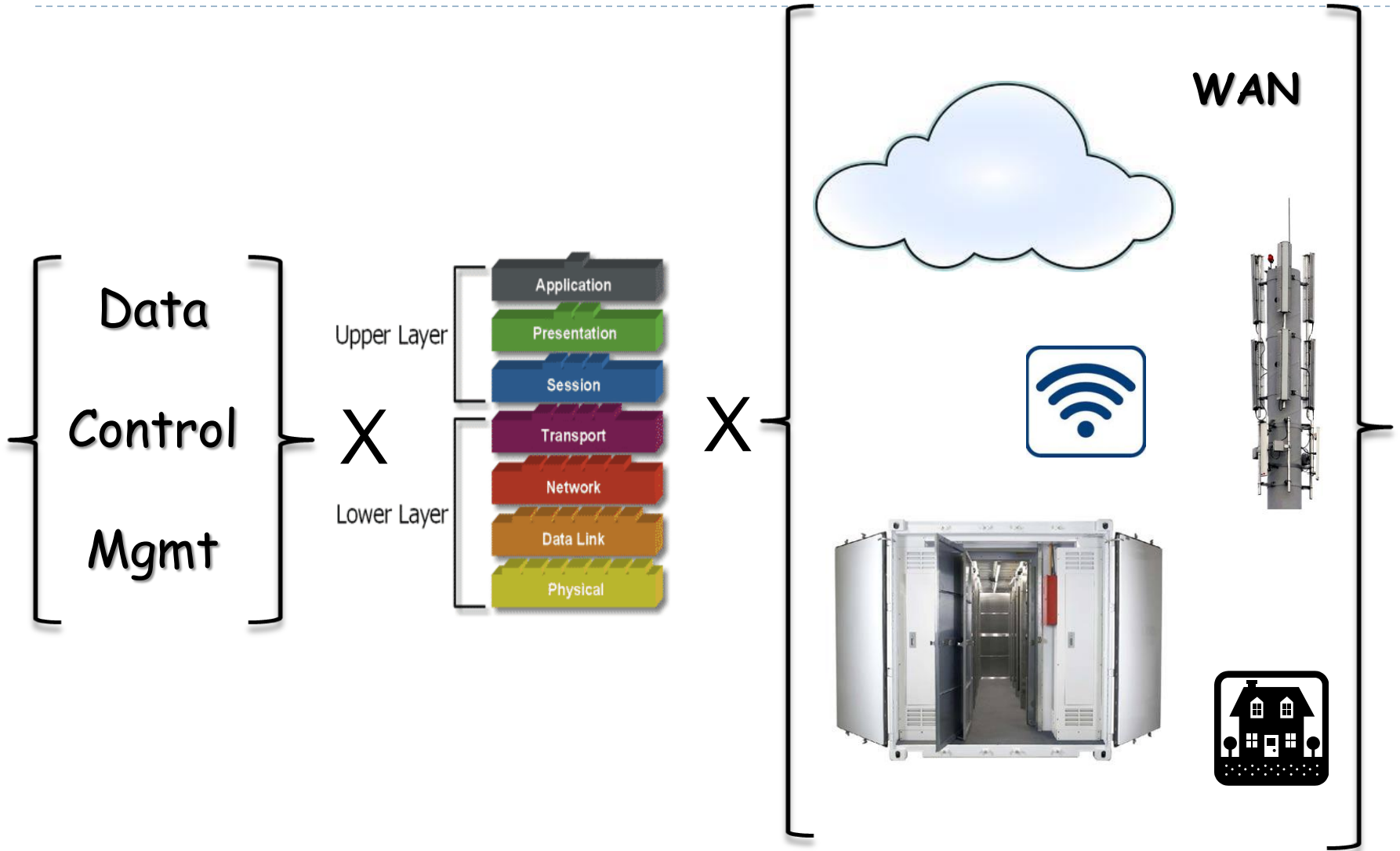
Mgt.

Applications

Network Operating Systems



Investment Map





This is a great
time to venture
invest in open
networking!

gregp@nea.com

NEA[®]

- ▶ Greg Papadopoulos
Venture Partner, NEA

