

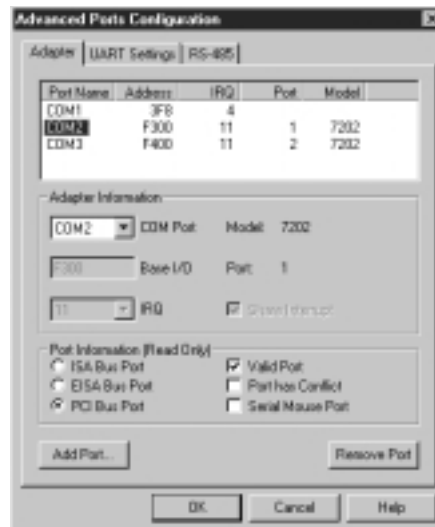
Sealevel Systems is committed to providing the most technologically advanced products available. To make each product as simple to integrate as possible, we are and will continue to develop and offer installation and configuration software to support today's mainstream operating systems.

Each Sealevel Systems product ships with a comprehensive utility suite providing drivers, setup files, samples, application notes and source code where applicable. For the most up to date software visit our website at www.sealevel.com.



Windows® NT/2000 Advanced COM: Driver

We've enhanced the Windows NT and 2000 drivers to provide enhanced features including Advanced UART Support and Auto RS-485 RTS Control. We've even added support for 9 bit data communications, Isochronous communications, and custom data rate selection preselector for use with the 16950 UART. Regardless of your operating system, Sealevel Software simplifies your installation.



Windows® 95/98/ME Advanced COM: Driver

We've enhanced the Windows 95/98/ME COM: driver to provide support for shared IRQs, advanced UARTs and Auto RS-485 RTS control. Now you can install a multi-port serial I/O adapter and assign all ports to a single IRQ without risking data loss. Take full advantage of advanced UARTs (16650 and higher). Our advanced UART tab allows detailed control of UART features not available in the standard Windows 95/98 COM: driver. We've even included Auto RS-485 RTS control for cards that do not have the ULTRA hardware circuit.



WinSSD — Windows® Serial Diagnostics

WinSSD is a Windows Serial Diagnostics Program that we designed specifically for UART based products which use 16x50 or 8250 compatible UARTs. Using WinSSD, the user can verify the board IRQ and address settings, modify the default UART parameters, perform external loop-back tests, toggle/monitor modem control signals and transmit test pattern messages. WinSSD also allows terminal mode operations, bit error rate testing and throughput monitoring.



32-bit Windows® Serial Utility Software

Serial Driver/Utility/Diagnostic Software included with UART Cards

Description

The Sealevel Systems Windows Serial Utility Software provides the tools necessary for installing and verifying the operation of Sealevel Systems' UART based products within 32-bit Windows operating systems.

Distribution Information

One copy of the Windows Serial Utility Software is included with each Sealevel Systems Asynchronous serial I/O adapter purchased. The Windows Serial Utility Software has unlimited usage rights, provided a Sealevel Systems' hardware product is used.

Features

- Setup program to guide the user through installation
- Automatically launches INF files and setup utilities based on the product and bus



Windows® Utilities

- 2000 Device Manager Advanced Tab — allows control of Advanced UART and communication control settings.
- NT Advanced Ports Applet — Setup utility for configuring Sealevel Systems' single and multi-port UART based adapters.
- WinSSD — Windows serial diagnostics program for UART based products which use 16x50 or 8250 compatible UARTs. Using WinSSD the user can verify the presence of a specified COM: port and display the configuration of the device when the test was started.
- 98/ME/2000 Port Manager Utility — Shows all COM: ports installed on system, allows COM # to be changed, and allows custom USB data rates.

Drivers

- Windows 95/98/ME Advanced COM: Driver — Our Windows 95/98 Advanced COM: driver provides support for shared IRQs, advanced UARTs and Auto RS-485 RTS control. Take full advantage of advanced UARTs (16650 and higher). Our advanced UART tab allows detailed control of UART features not available in the standard Windows 95/98 COM: driver. We've even included

Auto RS-485 RTS control for cards that do not have the ULTRA hardware circuit.

- Windows NT/2000 Advanced COM: Driver — Our Advanced COM: driver provides support for our PCI serial I/O adapters, advanced UARTs and Auto RS-485 RTS control.



Take full advantage of advanced UARTs (16650 and higher). We've even included Auto RS-485 RTS control for cards that do not have the ULTRA hardware circuit and 16950 UART support for Isochronous communication 9 bit data and data rate prescaler.

LINUX, QNX, DOS and Windows® 3.1x

Serial Driver/Utility/Diagnostic Software included with UART Cards

Description

The Sealevel Systems Serial Utility Software provides the user with all of the tools necessary to verify the installation and operation of Sealevel Systems serial I/O products. In addition, numerous technical notes are provided from years of experience targeted at streamlining installation and operation.

Distribution Information

One copy of the Serial Utility Software is included with each Sealevel Systems Asynchronous serial I/O adapter purchased. The Serial Utility Software has unlimited usage rights, provided a Sealevel Systems' hardware product is used.

Features

Linux and QNX

- We include utilities for our PCI cards to simplify installation. Our ISA serial I/O cards are compatible "out of the box". We even provide step by step instructions to further simplify installation.

Windows Help Files

- Windows 3.1x Help File — Provides a step-by-step guide to installing and configuring serial ports in Windows 3.1x.

DOS Utilities

- SSD — Sealevel Systems Diagnostic. Using SSD, the user can verify the card address and confirm the presence of a UART at the specified address and display the configuration of the device when the test was started.

DOS and Windows 3.1x Drivers

- FindPCI — Identifies existing Sealevel Systems PCI adapters in a system and creates an ".ini" file for use by SetPCI in DOS and Windows 3.1x.
- SetPCI — Sets Sealevel Systems PCI adapters to specific I/O addresses for DOS and Windows 3.1x.
- SeaCOM — Interrupt driven DOS Serial Port Driver. SeaCOM is a BIOS extension and/or replacement that provides extended capabilities in the form of Block I/O and user configurable flow control support. SeaCOM also emulates standard BIOS interrupt calls.

PCMCIA Enablers, Utilities and

Diagnostic Programs

- PCSSD — PCMCIA diagnostic program that will display information regarding PCMCIA systems and installed PC Cards.

DOS



Application Notes

Information on installation and technical notes pertaining to DOS, Windows 3.1x, OS/2 and other operating systems.



Relay/Digital I/O Software

Each Sealevel Systems product ships with a comprehensive utility suite providing drivers, setup files, samples, application notes and source code where applicable. For the most up to date software visit our website at www.sealevel.com.



Seal/O Windows Drivers

The Seal/O software package is a Windows Developer's Toolkit for Sealevel Systems' Relay and Digital I/O products. This family of drivers has a common Seal/O API (Application Programmer Interface) that is implemented in a Windows Dynamic Link Library (DLL). This API gives programmers access to our products from multiple Windows-based development platforms such as Visual C++, Visual Basic and Delphi. Our goal is to provide the developer with a single, high-level programming interface that will function with a variety of hardware products across multiple operating systems.

Seal/O provides simple output capability to control individual relays or groups of relays. Seal/O also offers direct input and programmable timed monitoring of inputs with application event notification. This software package also includes sample application(s) with source code to shorten your development time.



Seal/O supports all Sealevel Systems PCI and ISA Digital I/O adapters. Seal/O can support up to 8 Relay and Digital I/O adapters.

Applications

- **VB Test** — VB Test is a 32 bit Visual Basic sample with GUI (Graphical User Interface). VB Test allows Windows control of individual and groups of relays. It offers timed relay activation and monitoring of inputs. VB Test demonstrates the use of the Seal/O API for Visual Basic developers.
- **Siocmd** — Siocmd allows easy integration of Seal/O functions into batch files.
- **Seaiotst** — Seaiotst is a Windows Console application. Allows the user to exercise the functionality of the driver.



Supported options include:

- Up to 32 Relay walk through
- Turn on all relays
- Turn off all relays
- Read inputs
- Notify on input change

Seal/O Help Files

Seal/O includes two help files to answer any questions that may arise regarding the drivers and applications.

- **Seao.hlp** — Is provided for operational support. Seao.hlp includes information on getting started, current Seal/O drivers, installation, configuration, hardware and software verification, Seal/O API (Application Programmers Interface), sample application(s) with source code and more.
- **Install.hlp** — Includes information regarding software updates, suggestion/feedback forms, bug reports and technical support contact numbers.



SYNCHRONOUS SOFTWARE

Each Sealevel Systems product ships with a comprehensive software suite providing drivers, setup files, samples, application notes and source code where applicable. For the most up-to-date software visit our website at www.sealevel.com.



SeaMAC

Sealevel Systems offers a family of developer oriented solutions for Windows known as SeaMAC (Sealevel Systems Media Access Control). This family of drivers has a common SeaMAC API (Application Programmer Interface) that is implemented in a Windows Dynamic Link Library (DLL). This API gives programmers access to our products from multiple Windows based development platforms such as Visual C++, Visual Basic and Delphi. Our goal is to provide the developer with a single, high-level programming interface that will function with a variety of Sealevel hardware products across several operating systems. Low level drivers communicating through the SeaMAC API provide data formats including SDLC/HDLC and ASYNC.

SeaMAC currently supports the Advanced Communication Board (ACB) family of Synchronous communication cards. The ACB family offers a Synchronous/Asynchronous communications port in most popular electrical interfaces, including RS-232, RS-422, RS-485, EIA-530, MIL-188 and CCITT-V.35



SeaMAC Applications

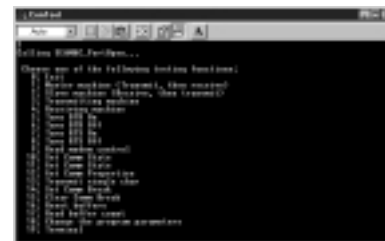
- **SeaBERT** — SeaBERT is a multi-threaded bit error rate test application for verifying communication channel performance. SeaBERT can be used in a loopback or point-to-point test configuration. This software tracks bit errors and Sync losses while displaying transmit and receive frame counts, the number of bytes verified and driver error statistics.
- **SeaTERM** — Binary and text file transfer application for use across Sync/Async communication links. Supports X-MODEM, X-MODEM 1K, Y-MODEM and Y-MODEM G transfer protocols. Fully supports testing of modem control signals.



- **ProTest** — Communications link monitor and analyzer software. Includes macro language support to control transmission and reception of Sync/Async data. Supports both ASCII and hexadecimal display of received data. Also supports several data logging options.

ConTest

- **ConTest** — ConTest is a Windows NT console application designed for testing all API calls to the SeaMAC driver family.



Description

The Windows toolkit includes SeaMAC (Sealevel Systems Media Access Control), our family of Windows drivers. SeaMAC drivers are implemented as either NT kernel mode drivers or Windows virtual device drivers (VxDs) which support the SeaMAC API (Application Programmer Interface).

Features

- Simple setup program for driver installation.
- Supports Sealevel Systems adapters.
- Drivers have a common SeaMAC API.
- Includes applications, sample source code and utilities.

SeaMAC Drivers

ACB Drivers

- Windows 98/ME/NT/2000 interrupt mode HDLC/SDLC — supports 3612 and 5102
- Windows NT HDLC/SDLC — This driver supports SDLC/HDLC packets for multiple channels on ACB adapters.
- Windows NT Async — Async530 is a high-speed Windows NT Asynchronous driver.
- Windows 3.1x/95/98 HDLC/SDLC — HDLC530 is a Windows 3.1x/95/98 SDLC/HDLC packet driver.

Route 56 Drivers

- Windows NT HDLC/SDLC — HDLCC32 is a configurable HDLC driver for the high-speed Route 56.PCI adapter (Part No. 5101).

Windows Drivers, Applications and Utilities

Applications

- SeaBERT — SeaBERT is a multithreaded bit error rate test application for verifying communication channel performance.
- SeaTERM — Binary and text file transfer application for use across Sync/Async communication links. Supports X-MODEM, X-MODEM 1K, Y-MODEM and Y-MODEM G transfer protocols. Fully supports testing of modem control signals.
- ProTest — Communications link monitor and analyzer software. Includes macro language support to control transmission and reception of Sync/Async data.

Sample Applications With Source

- ConTest — ConTest is a Windows console application designed for testing all calls to the driver.
- MFCTerm — MFCTerm includes source code for the SeaTerm 32-bit sample application without the file transfer protocol support.
- VBTerm — VBTerm is a simple terminal program that was taken from the VBTerm example shipped with Visual Basic 4.0.
- Ex1 — Ex1 is a simple 16-bit terminal program which transmits characters typed on the keyboard and displays received data in a text window.



Utilities

- SeaMAC Control Panel Utility — This utility is used for customizing each SeaMAC driver's registry entries (Windows NT) or SYSTEM."INI" settings (Windows 95/98) for particular operating conditions.



DOS ACB Developer's Toolkit

Diagnostic Software/Drivers for DOS

Description

The Sealevel Systems ACB Developer's Toolkit provides the developer with programming samples and technical insight to aid in the development of reliable applications and device drivers for the ACB family of communication adapters.

Features

Utilities

- SSDACB — Diagnostic program for ACB family products which use 85x30 compatible SCCs. SSDACB provides the following tests: Internal and External Loop-back, IRQ, Modem Control Signals, Default Communication Parameters and Terminal Mode operation.
- TDMA — Test DMA on any Advanced Communication Board that supports Direct Memory Access transfers.
- ACBBAUD — Utility program that will calculate baud divisors for the Zilog 85x30 Serial Communications Controller (SCC).
- ACBOSC — Utility program that will determine suitable oscillator values to produce a given baud rate for the Zilog 85x30 Serial Communications Controller (SCC).

Drivers

- SeaMAC for DOS — DOS HDLC/SDLC Packet Driver. SeaMAC for DOS provides fully buffered input and output to Synchronous serial communication ports.
- ComSync for DOS — DOS Async/Clocked Async INT 14h COM: Driver replacement. Comsync for DOS provides fully buffered input and output to Synchronous serial communication ports.

PCMCIA — Enablers, utilities and diagnostic programs for PC Cards

- PCSSD — PCMCIA diagnostic program that will display information regarding PCMCIA systems and installed PC Cards. Card and Socket Services must be loaded before this program is executed.
- SeaPC — PCMCIA Version 2.0 compliant DOS client that will enable the selected PC Card's I/O address and IRQ when inserted.
- SSEnable — PCMCIA utility that will allow the use of a Sealevel Systems PC Card without loading card and socket services.



Application Notes

Information on programming issues and technical notes pertaining to the Zilog 85x30 SCC.

Source Code Samples and ACB runtime library

Sample Source is included royalty free to aid development. The runtime library includes the following: ACB I/O routines, interrupt driven programming routines, Direct Memory Access (DMA) routines and buffer routines.

