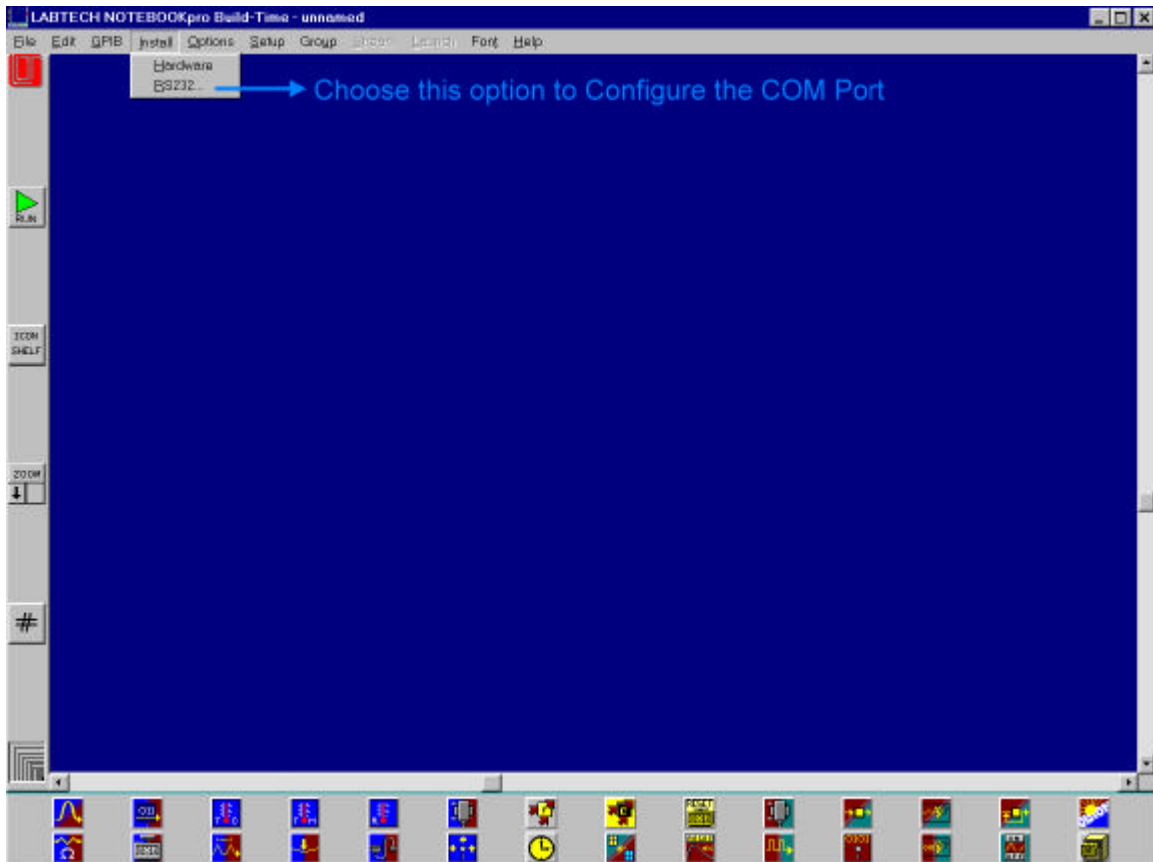


## Serial Communications with LABTECH NOTEBOOKpro

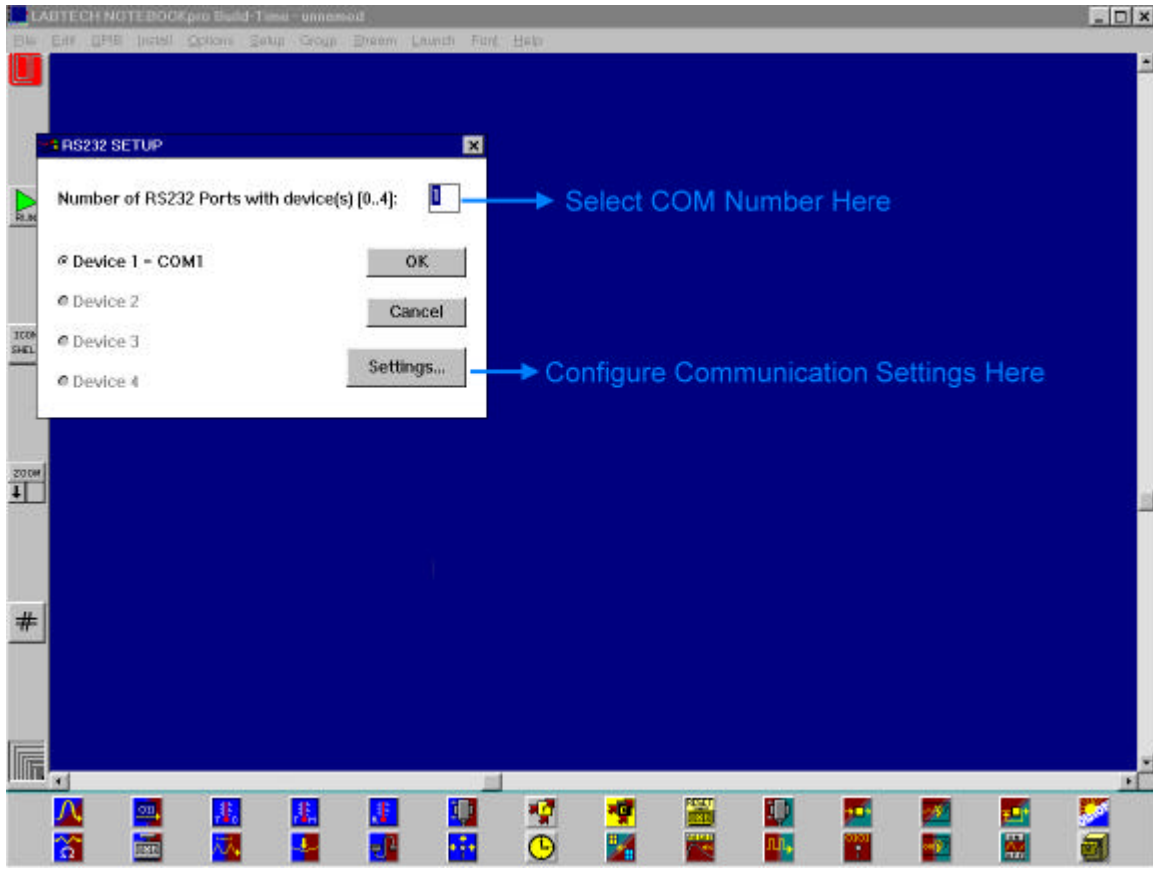
If you are going to use LABTECH NOTEBOOKpro with a Sealevel Systems serial adapter please note that though LABTECH NOTEBOOKpro references RS232 communications, any Sealevel Systems serial adapter will work. The software will not know the difference between RS232 and RS422/485 communications.

Follow the instructions for installing LABTECH NOTEBOOKpro. You will be given a chance to choose what hardware you want to install during the installation process. Choose RS232. After the installation of LABTECH NOTEBOOKpro is finished please reference the **RS232 Hardware Interface Guide** found in the LABTECH NOTEBOOKpro Program group. This gives a good overview of serial communications with LABTECH NOTEBOOKpro.

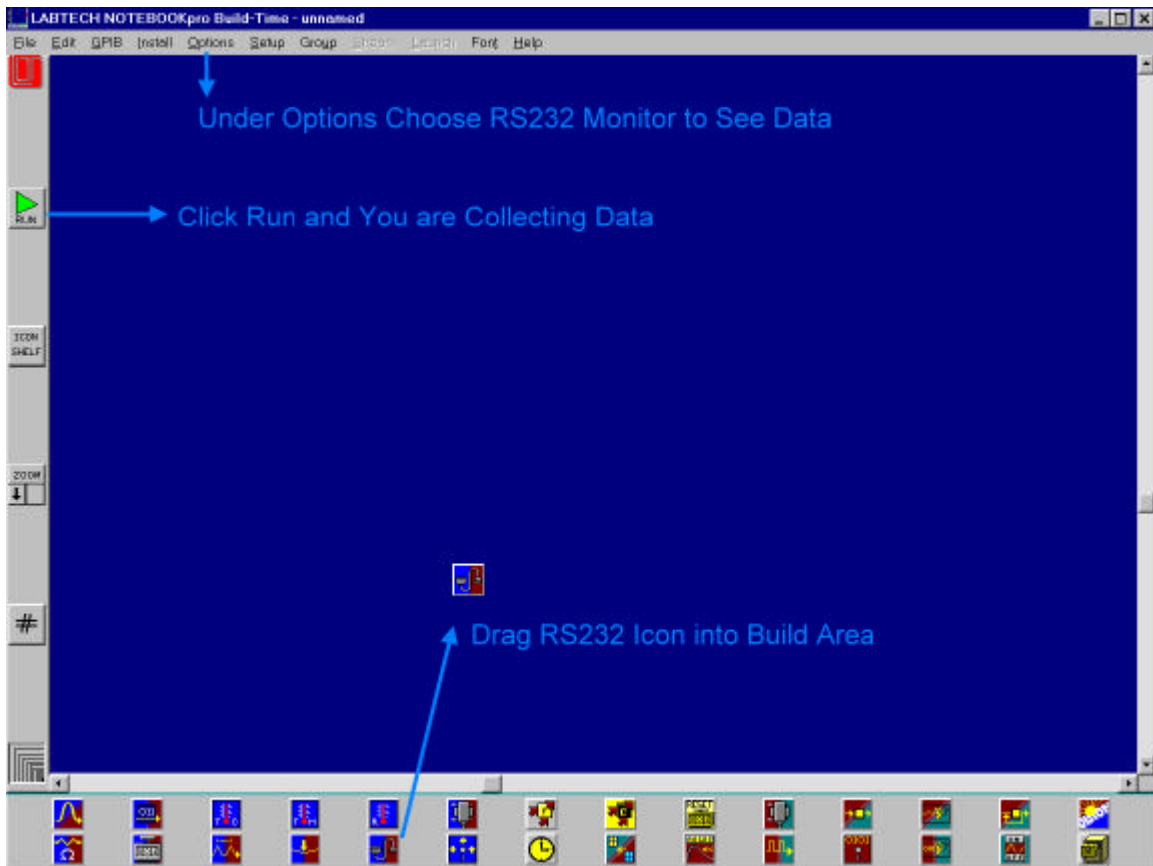
To configure LABTECH NOTEBOOKpro to communicate with a Sealevel device note which COM port is to be used. You will need this COM number to configure the port within LABTECH NOTEBOOKpro. This can be done during the install process or afterwards, by choosing Install, Hardware and RS232 from LABTECH NOTEBOOKpro menus. See screen shot below.



See the following screen shot for configuration options.



Once that is done drag the RS232 icon into the build area as shown below:



There is much more the program can do with the data you receive besides displaying it with the RS232 Monitor. This document is meant to show you how easy it is to get started. And remember both RS232 and RS422/485 devices may be used.