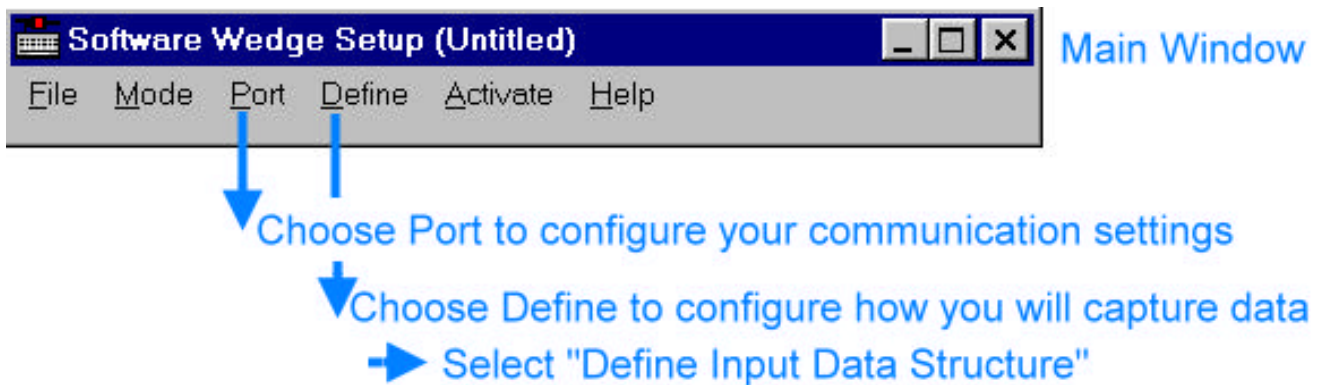


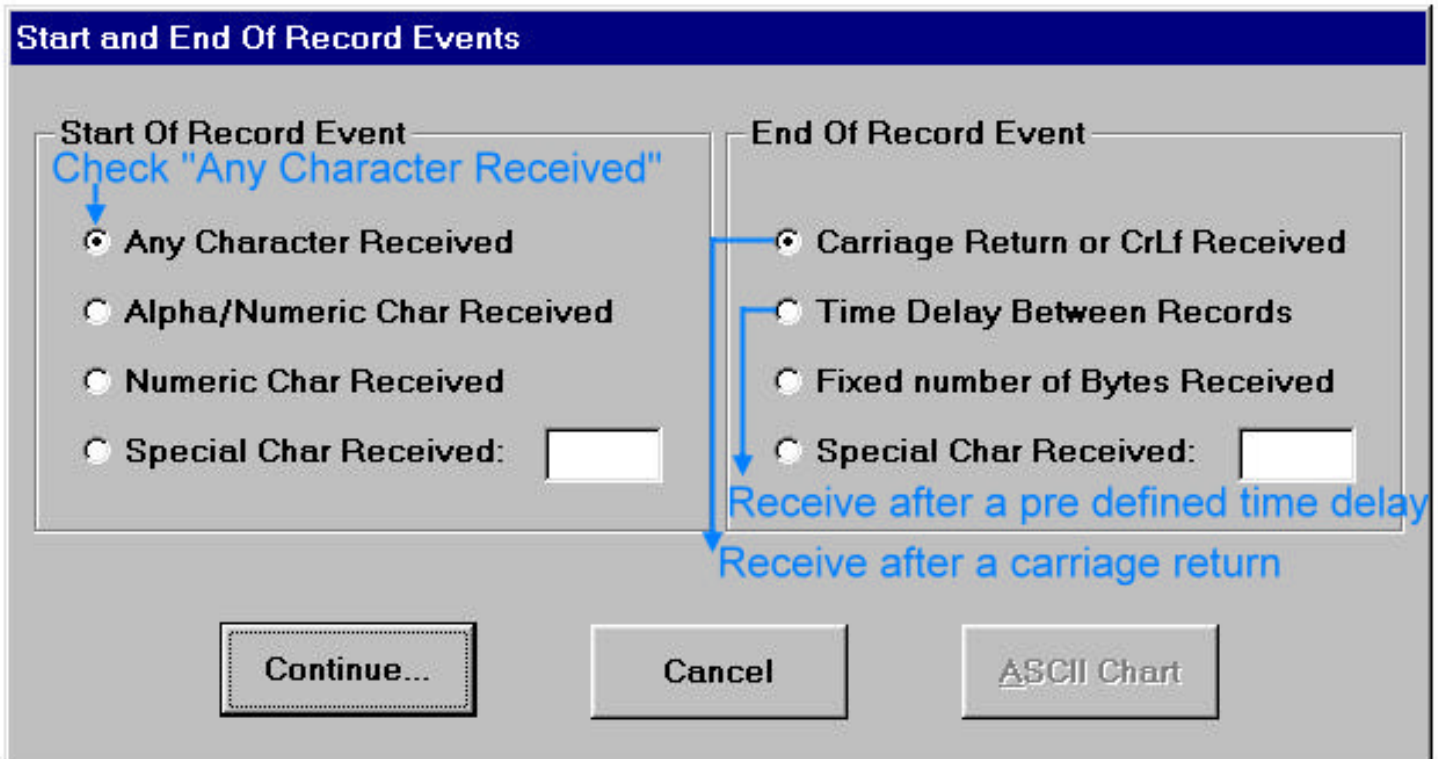
Serial Communications with WinWedge Pro

WinWedge Pro offers a unique way to capture serial data by converting the serial data stream to keyboard characters. The program can then send the data to any program such as Notepad, Word, Excel, etc. WinWedge Pro needs some configuration before starting and it is recommended that you read the User's Manual as the software states. Below are steps to get started using WinWedge Pro. As the manual suggests, start with either HyperTerminal or WinSSD's Terminal mode. By default the program sends the data to NotePad. If you want to see the data going from WinWedge Pro to NotePad have NotePad open as well.

What you will see when the program is first opened is the following:



Once the port is configured correctly the next thing you will want to do is configure how the data enters the program. Do this by selecting Define Input Data Structure as in the screen capture above. The next capture the shows the options for defining the input data structure.

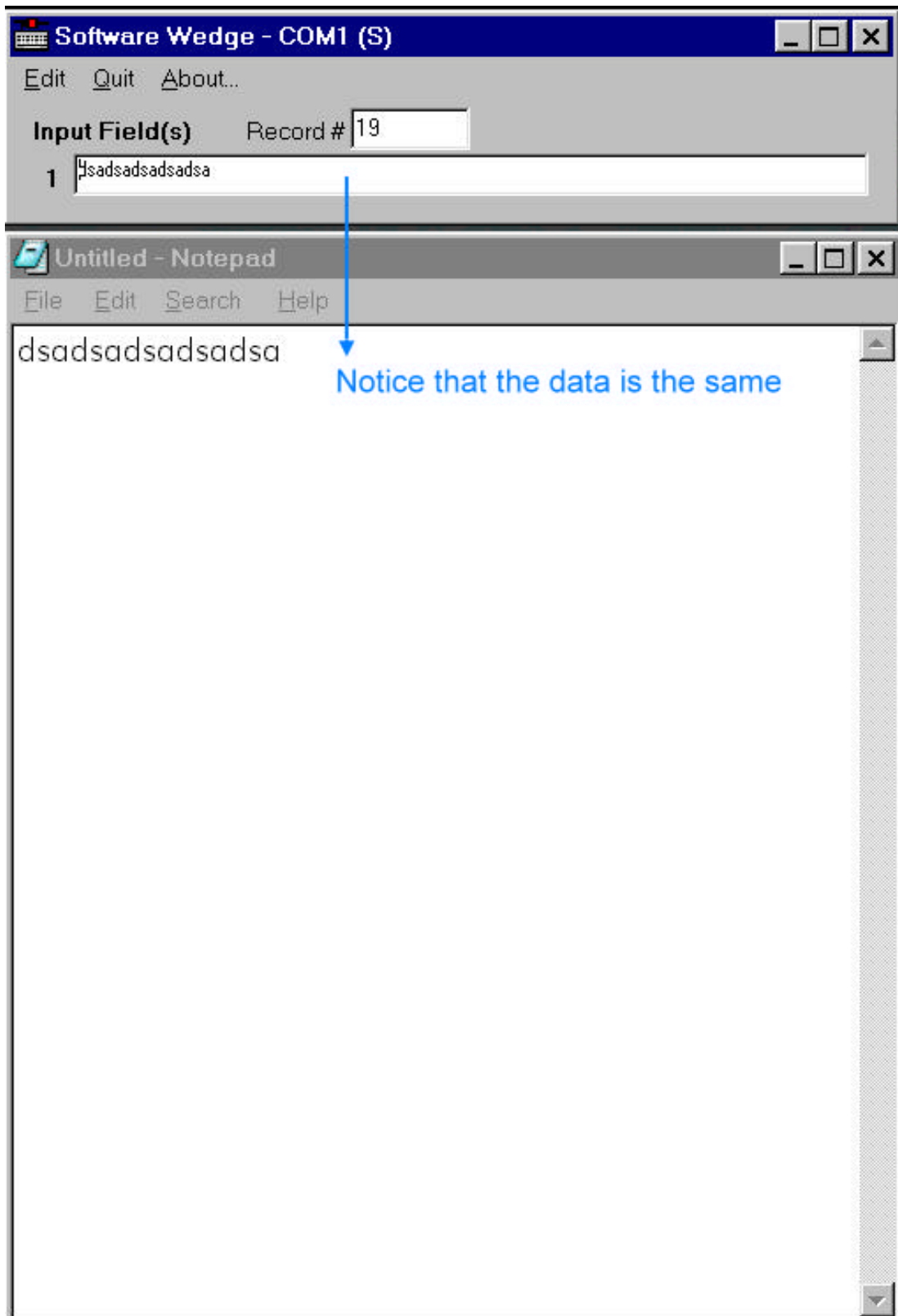


As you can see from above there are several ways to receive data. You can send a carriage return, have a time delay between data streams sent, fixed number of bytes, etc. For the purposes of the test choose either a carriage return or time delay. If time delay is chosen then you do not have to press enter each time you wish to see data appear. Once these choices have been made go through the Continue sequence and accept all the defaults. You are now ready to run the program.

There are two modes in which the program runs; test mode and normal. In test mode you cannot send data to another program. You only see the data in the input buffer. In normal mode you can have the data sent to NotePad or any other program. Again, NotePad is the default.

On the main screen Choose **Activate, Normal mode**.

The next capture shows the typical normal run screen and NotePad running at the same time. Notice that the data in the input buffer is the same as in NotePad.



You can choose to send the data to any Windows based programs as mentioned earlier. Also of importance is the DDE server. This is a powerful tool. The manual details all of this and more. The purpose of this quick start was to simply see data come in, capture it and send it to NotePad. Please refer to the WinWedge Pro manual for complete operating instructions.

Any Sealevel Systems serial product may be used with this program. It does not matter if it is RS232 or RS422/485. Remember that software does not know the difference between communication standards such as RS232 or RS422