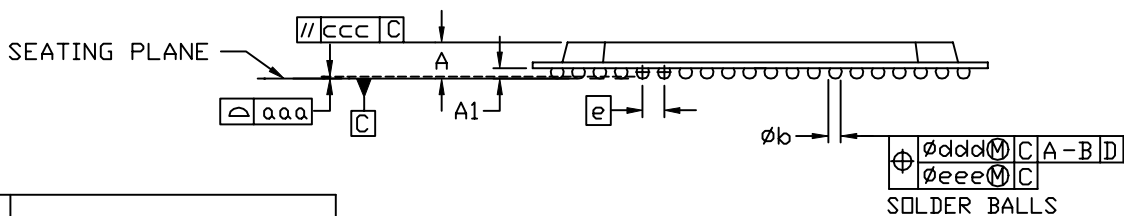
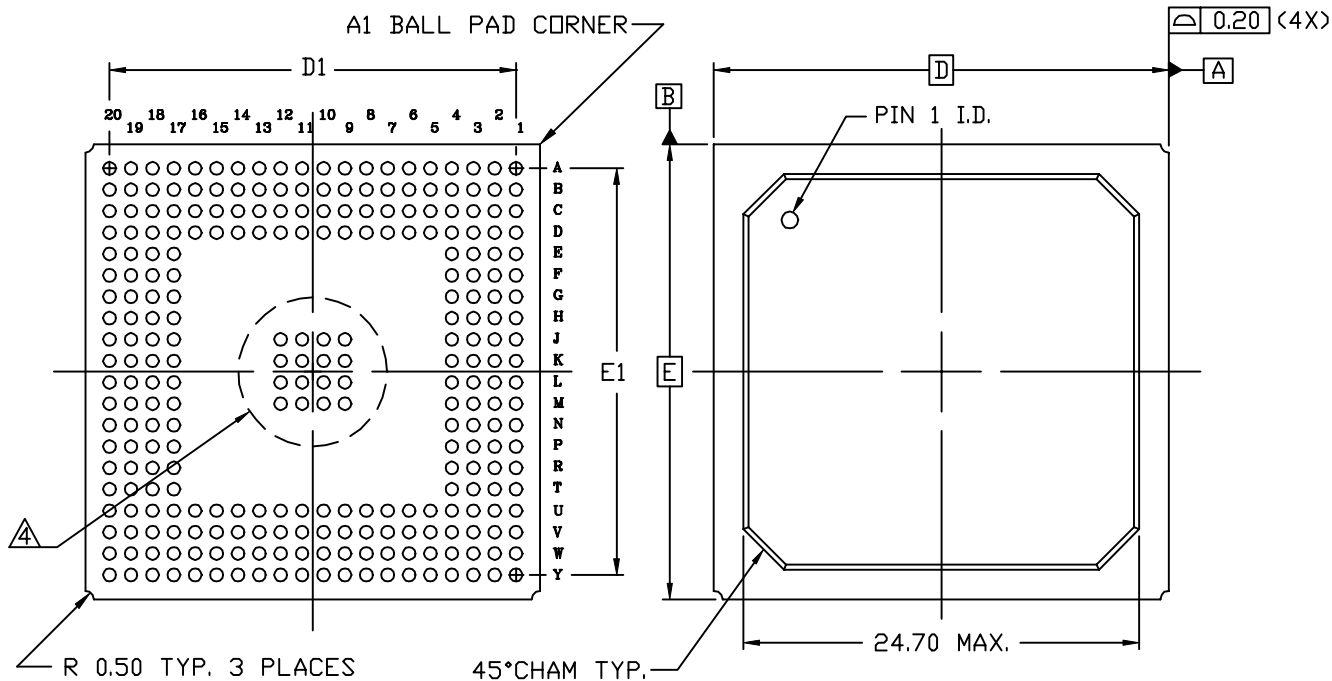


BGA Packages - BG256

BG256

BOTTOM VIEW

TOP VIEW



SYMBOL	MILLIMETERS		
	MIN.	NOM.	MAX.
A	<i>xx</i>	2.33	3.50
A ₁	0.50	0.60	0.70
D/E	27.00 BSC		
D ₁ /E ₁	24.14 REF		
e	1.27 BSC		
øb	0.60	0.75	0.90
aaa	<i>xx</i>	<i>xx</i>	0.20
ccc	<i>xx</i>	<i>xx</i>	0.35
ddd	<i>xx</i>	<i>xx</i>	0.30
eee	<i>xx</i>	<i>xx</i>	0.15
M	20		

NOTES:

1. ALL DIMENSIONS AND TOLERANCES CONFORM TO ANSI Y14.5M-1994
 2. SYMBOL 'M' IS THE BALL MATRIX SIZE.
 3. CONFORMS TO JEDEC MO-151-BAL-2
- ⚠** 16 EXTRA BALLS (GROUNDED) – APPLICABLE TO DEVICES WITH 28K GATES OR MORE.