



Mobile Media Research, Inc.

39675 Cedar Boulevard, #295A
Newark, CA 94560 USA
Phone: 1-800-799-MMRI (6674)
+1 510-657-4891
Fax: +1 510-657-4892
E-mail: sales@mobmedres.com
URL: www.mobmedres.com

Overview

Mobile Media Research, Inc. PCMCIA Card Debugger/Exerciser is designed for both hardware and software engineers in the development phase of a PCMCIA product.

Professional and Lite versions are available depending upon the needs and budget of the user. The features of each are listed below.

Lite Version Features (SW-002-LV)

- Engineering debug software for PCMCIA hosts and cards
 - Supports 82365SL-compatible based hosts
- Fully compatible Microsoft Windows-based GUI
 - Provides easy control of host functions
 - Generates PCMCIA bus cycles on the selected socket
 - Allows direct access to PCIC registers
 - Integrates all functionality necessary for PCMCIA compatibility testing in one screen

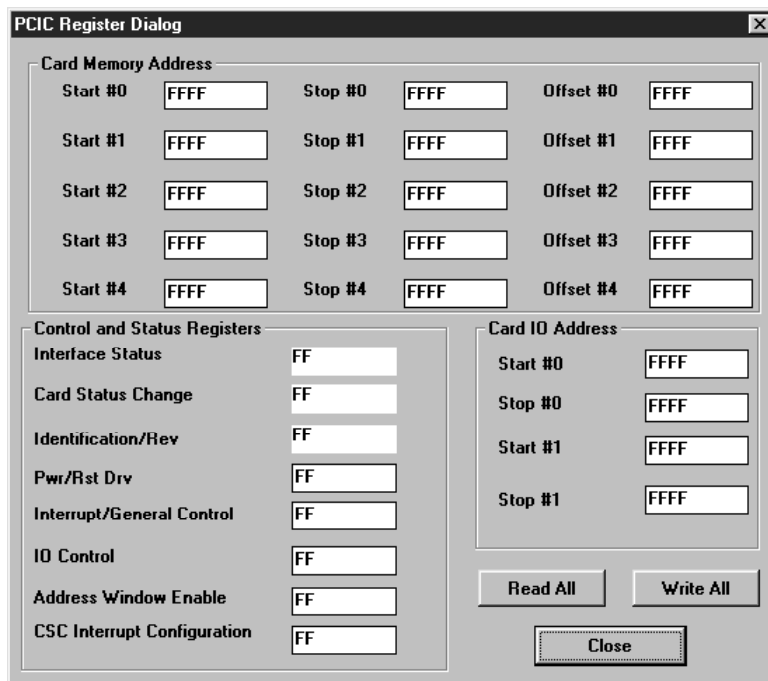


Figure 1: PCMCIA Card Debugger/Exerciser Window

- Supports basic and necessary PCMCIA debug and testing features:
 - Register access
 - I/O and memory window set-up
 - Socket configuration access

Professional Version Features (SW-002-PV)

- All features of Lite version plus these debug and test features:
 - Card Configuration Register support, up to 16 registers, especially useful for multi-function cards
 - ATA card debug module (supports ATA interface)
 - Built-in CIS Parcel, with tuple browser to read the CIS
- Built-in command Macro/Interpreter
 - Supports user programmable "Macro" commands to generate system cycles for PCMCIA host/card debug
 - Up to eight user-defined command lines
 - Trace, Normal and Step options
 - Loop control capability
 - Results displayed in monitor window
- Excellent for high-volume testing
- Ideal for Host or PC-Card debug, characterization and evaluation

Available Support Products

Support products available from Mobile Media Research, Inc. (further details provided in this product description)

- PCMCIA Prototyping Card
- CIS Generator 1.2 software

Ordering Information

To purchase or make further inquiries about this or other MMRI products, contact Mobile Media Research, Inc. directly.

Related Information

Xilinx Programmable Logic

For information on Xilinx programmable logic or development system software, contact your local Xilinx sales office, or:

Xilinx, Inc.
2100 Logic Drive
San Jose, CA 95124
Phone: +1 408-559-7778
Fax: +1 408-559-7114
URL: www.xilinx.com

For general Xilinx literature, contact:

Phone: +1 800-231-3386 (inside the US)
+1 408-879-5017 (outside the US)
E-mail: literature@xilinx.com

For AllianceCORE™ specific information, contact:

Phone: +1 408-879-5381
E-mail: alliancecore@xilinx.com
URL: www.xilinx.com/products/logiccore/alliance/tblpart.htm
