

# Xilinx v2.1i Software Backgrounder

Alliance Series Software / Foundation Series Software

## Introduction

Xilinx delivers the most powerful programmable logic solution in the industry. The combination of Xilinx software and cores, leading edge Xilinx FPGA and CPLD device architectures, and comprehensive support services make Xilinx the preferred choice of electronic designers worldwide.

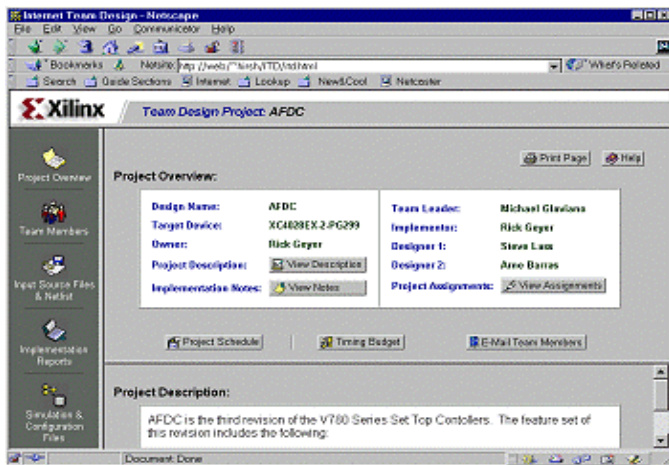
## Configurations

Version 2.1i consists of two flagship products:

- ♦ Alliance Series Software - The Alliance Series is engineered to plug and play with a digital designer's existing design flow. This combination of advanced feature sets delivers high performance results within a customizable design environment.
- ♦ Foundation Series Software - The Foundation Series Software is a complete, ready-to-use design environment that integrates schematic, synthesis, verification, and implementation tools into an intuitive, yet highly advanced design solution.

## Internet Team Design

Version 2.1i enables teams of designers to collaborate on a design using the internet as the communications backbone. Designers will be able to use their Netscape™ or Microsoft™ browser to coordinate a design project from across the aisle or across the world.



## Xilinx Extends its Cores Leadership

Designers that need PCI, DSP, memory blocks, soft cores from Xilinx AllianceCORE Partners, or other intellectual property in their designs will reap significant productivity benefits via the newly enhanced CORE Generator, which is integrated with the Alliance and Foundation Series software. Using the Core Generator, designers can take advantage of the world's 1<sup>st</sup> 64 bit/66 MHz Real PCI Core.



## Industry's First 2 Million Gate FPGA

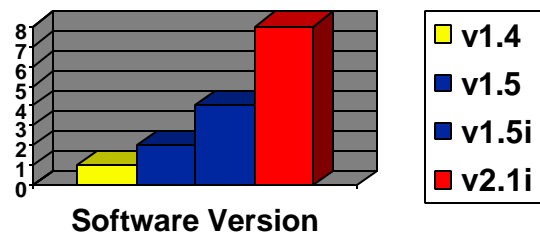
The Virtex family redefines the future of programmable logic by delivering FPGAs that break density and performance barriers while offering unprecedented system level integration. Plus, Xilinx offers an extensive library of cores which allows designers to create very complex, high speed designs with guaranteed results. There has never been an easier or faster way to get a digital design to market.



## Industry's FASTEST Runtimes

The Implementation Tools that are included in the Alliance and Foundation tools are the key to achieving industry's fastest compile times. Xilinx has doubled the speed of its Place and Route tools in each of the last 4 releases. Fast compile times translate to more turns per day and greater productivity.

## Compiler Speed Improvements



## Support

Xilinx support resources serve as an extension of a company's design team. Xilinx delivers comprehensive support services including:

- ♦ support.xilinx.com: a designer-centric web site that is available 24 hours a day, 7 days a week
- ♦ Worldwide phone-based support during working hours
- ♦ XPERTS Certified Third Party Consultants Program
- ♦ Customer Education Services
- ♦ The IP Center: a web-based resource for Cores & IP
- ♦ Local Field Application Engineers



## Summary

The 2.1i versions of the Alliance and Foundation Series software enable designers to deliver the world's highest performing digital designs on time and to spec. Version 2.1i delivers extremely fast compile times and super fast clock speeds. In addition, Xilinx's superior Cores strategy will significantly speed up a project's time-to-market. *The 2.1i release represents the most productive, most effective programmable logic design environment available today.*