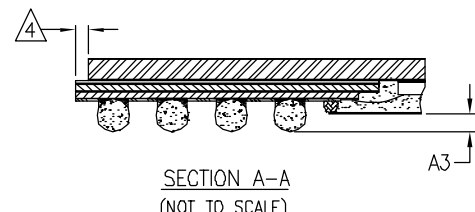
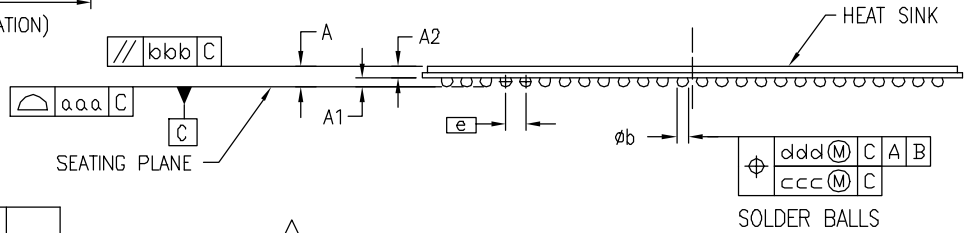
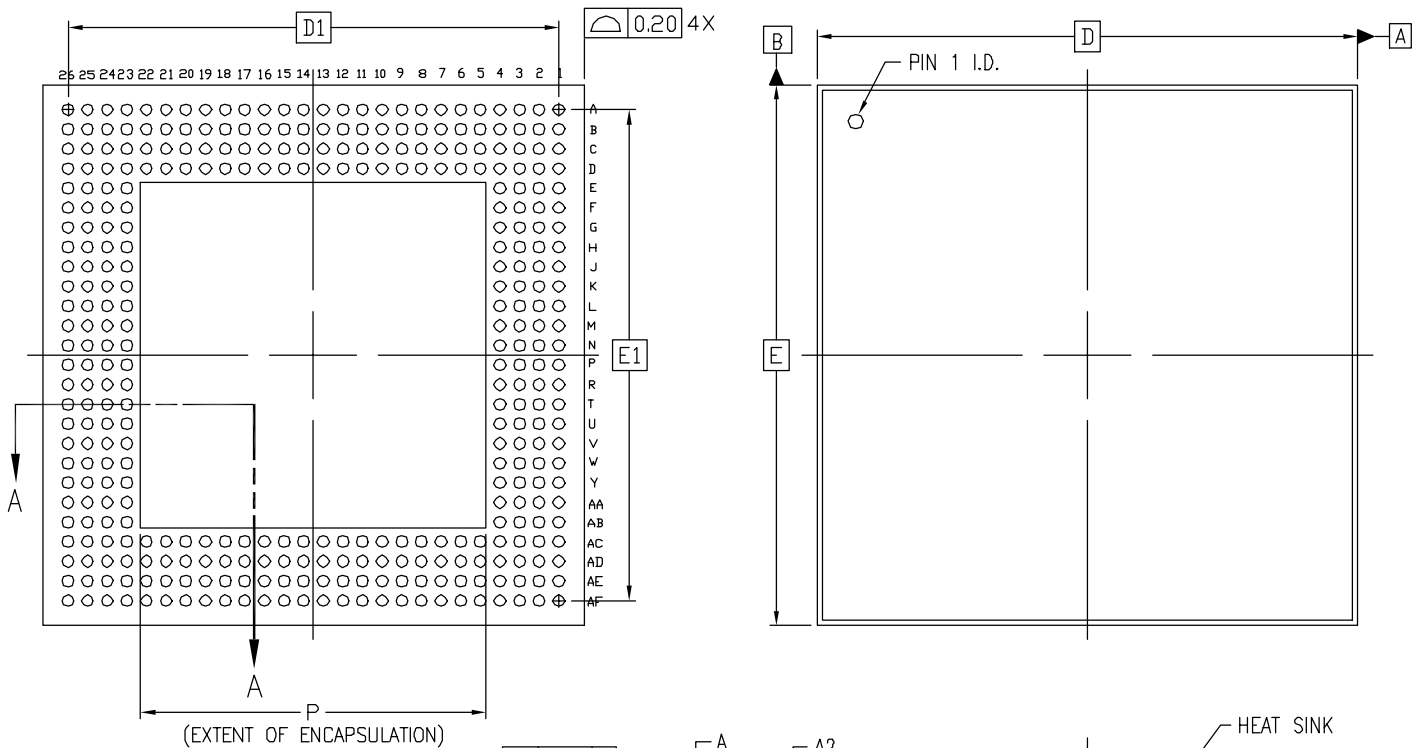


BG352 (CAVITY DOWN)

BOTTOM VIEW

TOP VIEW



| SYMBOL | MILLIMETERS | | | NOTE |
|--------------------------------|----------------|----------------|----------------|------|
| | MIN. | NOM. | MAX. | |
| A | 1.10 | 1.40 | 1.70 | |
| A ₁ | 0.50 | 0.60 | 0.70 | |
| A ₂ | 0.60 | xxx | 1.00 | |
| A ₃ | 0.20 | xxx | xxx | |
| D/E | 35.00 BSC | | | |
| D ₁ /E ₁ | 31.75 REF. | | | |
| e | 1.27 BSC | | | |
| phi_b | 0.60 | 0.75 | 0.90 | |
| P | xxx | xxx | 25.70 | |
| aaa | xxx | xxx | 0.20 | |
| bbb | xxx | xxx | 0.25 | |
| ccc | xxx | xxx | 0.15 | |
| ddd | xxx | xxx | 0.30 | |
| M | 26 | | | |

NOTES:

1. ALL DIMENSIONS AND TOLERANCES CONFORM TO ANSI Y14.5M-1994
 2. SYMBOL "M" IS THE PIN MATRIX SIZE.
 3. CONFORMS TO JEDEC MO-192-BAR-2 (DEPOPULATED)
- △ HEAT SINK PULLBACK - 0.375mm MAX.

CONFIDENTIAL

This document is the property of Xilinx Incorporated and contains information which is confidential and proprietary to Xilinx. No part of this document may be copied, reproduced or disclosed to third parties without the prior written consent of Xilinx Incorporated.



SIZE

A

DRAWING NUMBER

OBG0008

REV

05

SCALE NONE

SHEET 2 OF 2