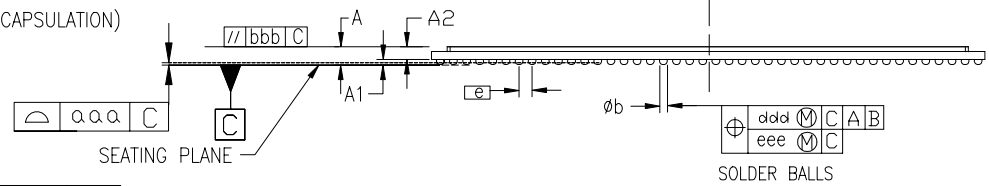
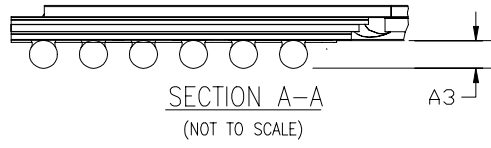


(EXTENT OF ENCAPSULATION)



SYMBOL	MILLIMETERS			NOTE
	MIN.	NOM.	MAX.	
A	$\cancel{0.40}$	1.95	2.20	
A ₁	0.40	0.50	0.60	
A ₂	$\cancel{0.40}$	$\cancel{0.40}$	1.50	
A ₃	0.20	$\cancel{0.20}$	$\cancel{0.20}$	
D/E	42.50 BASIC			
D ₁ /E ₁	41.00 REF			
e	1.00 BASIC			
phi b	0.50	0.60	0.70	
aaa	$\cancel{0.15}$	$\cancel{0.15}$	0.15	
bbb	$\cancel{0.25}$	$\cancel{0.25}$	0.25	
ddd	$\cancel{0.30}$	$\cancel{0.30}$	0.30	
eee	$\cancel{0.10}$	$\cancel{0.10}$	0.10	
M	42			



NOTES:

1. ALL DIMENSIONS AND TOLERANCES CONFORM TO ASME Y14.5M-1994
2. SYMBOL "M" IS THE PIN MATRIX SIZE.
3. CONFORMS TO JEDEC MO-151-AAV-1 (DEPOPULATED)

860-BALL FINE PITCH BGA (FG860)