



PRESENTS

NETWORLD INTEROP



Data Only Networking

Susan E. Rudd

President, Acorn Communications

September 13th. 2001

Email: suerudd@mailtel.com

(617) 720 5060

Why Data Only ?

What do we mean by “**Data Only**”?

- ≡ IP Based
- ≡ Architecture Not based on PSTN/Mobile Hierarchy & Switches
- ≡ Data = Bits with variable Bandwidth & Delay Requirements.

What do we gain ?

- ≡ Simple Network Architectures
- ≡ Fastest way to *Broadband* & Bandwidth-on-Demand
- ≡ Instant Broadband Killer App's.
 - ☞ **2 Mbps standard Two-way Internet Access**
 - ☞ **Multimedia**

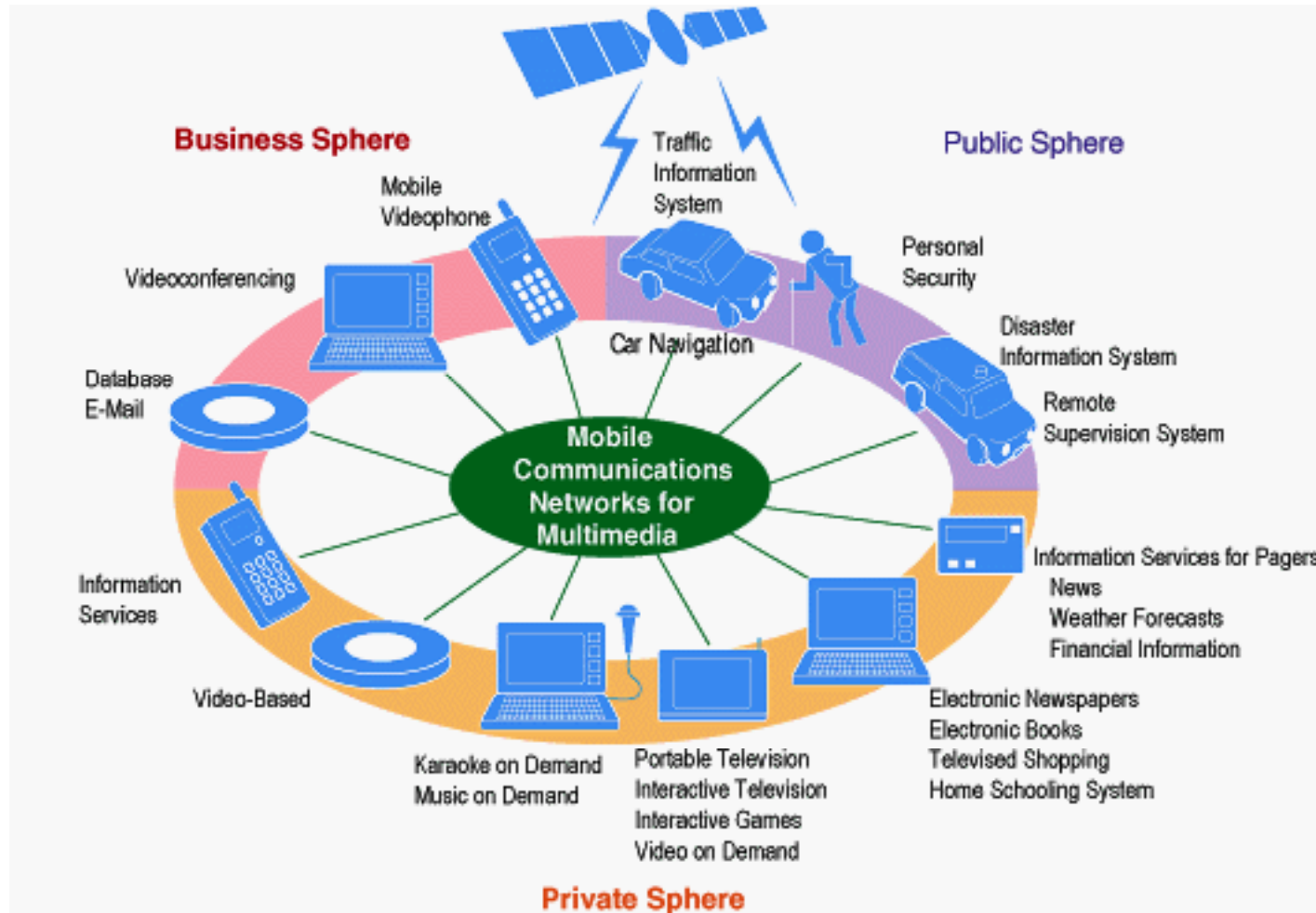
Why IP Wireless Broadband Now ?

- ≡ *Simpler AND Cheaper* than New Coax and Copper
- ≡ With QoS and Dynamic Bandwidth & Protocol Assignment can deliver:
 - ☞ **Video Bursts**
 - ☞ **Voice (as a subset of Two-way Multimedia)**

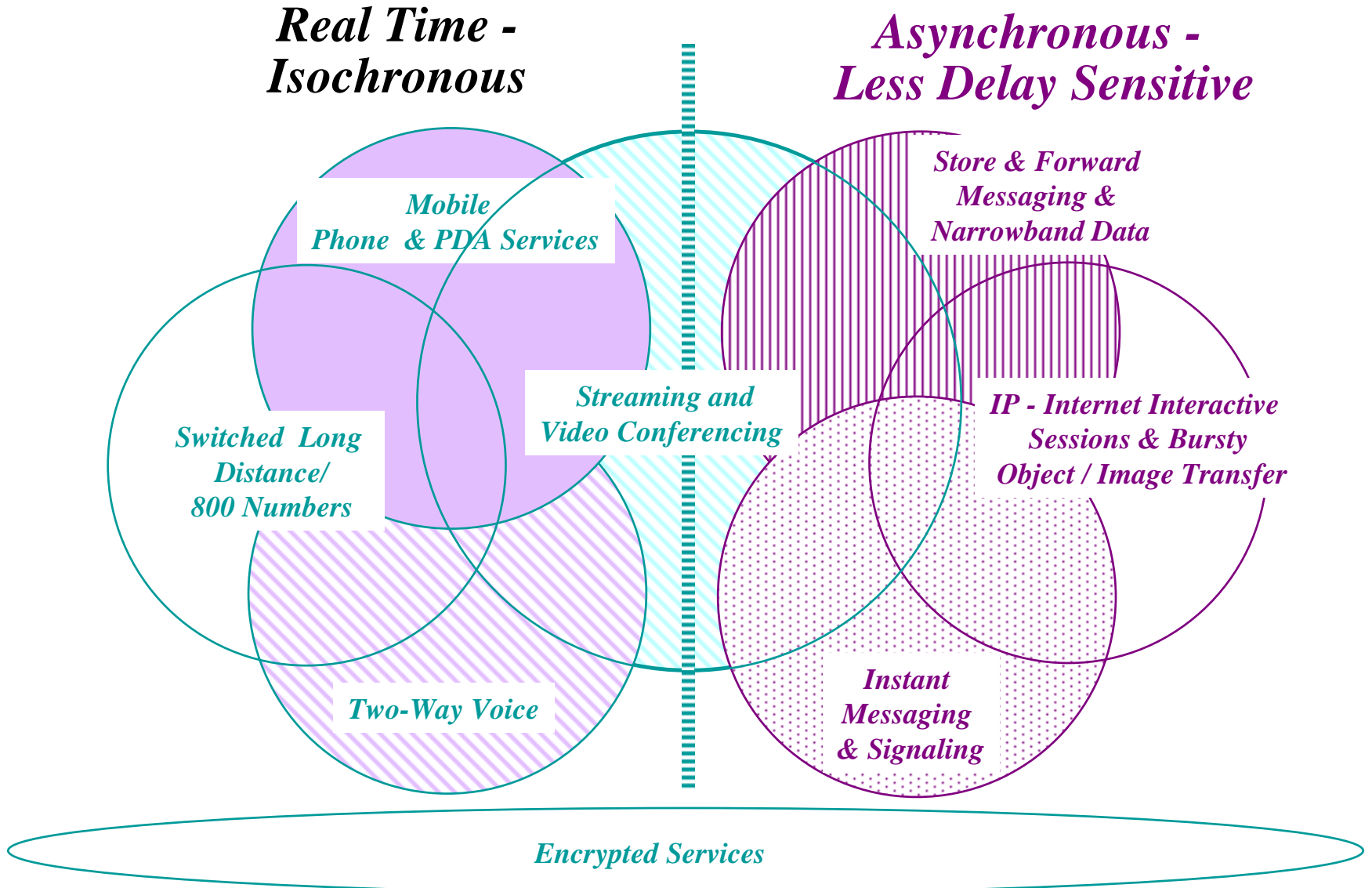
Why Data Only for Wireless ?

*Providing Fixed Mainstream
Transport for Broadband
Multimedia Services brings
Wireless into the
Mainstream of
Communications
Networking*

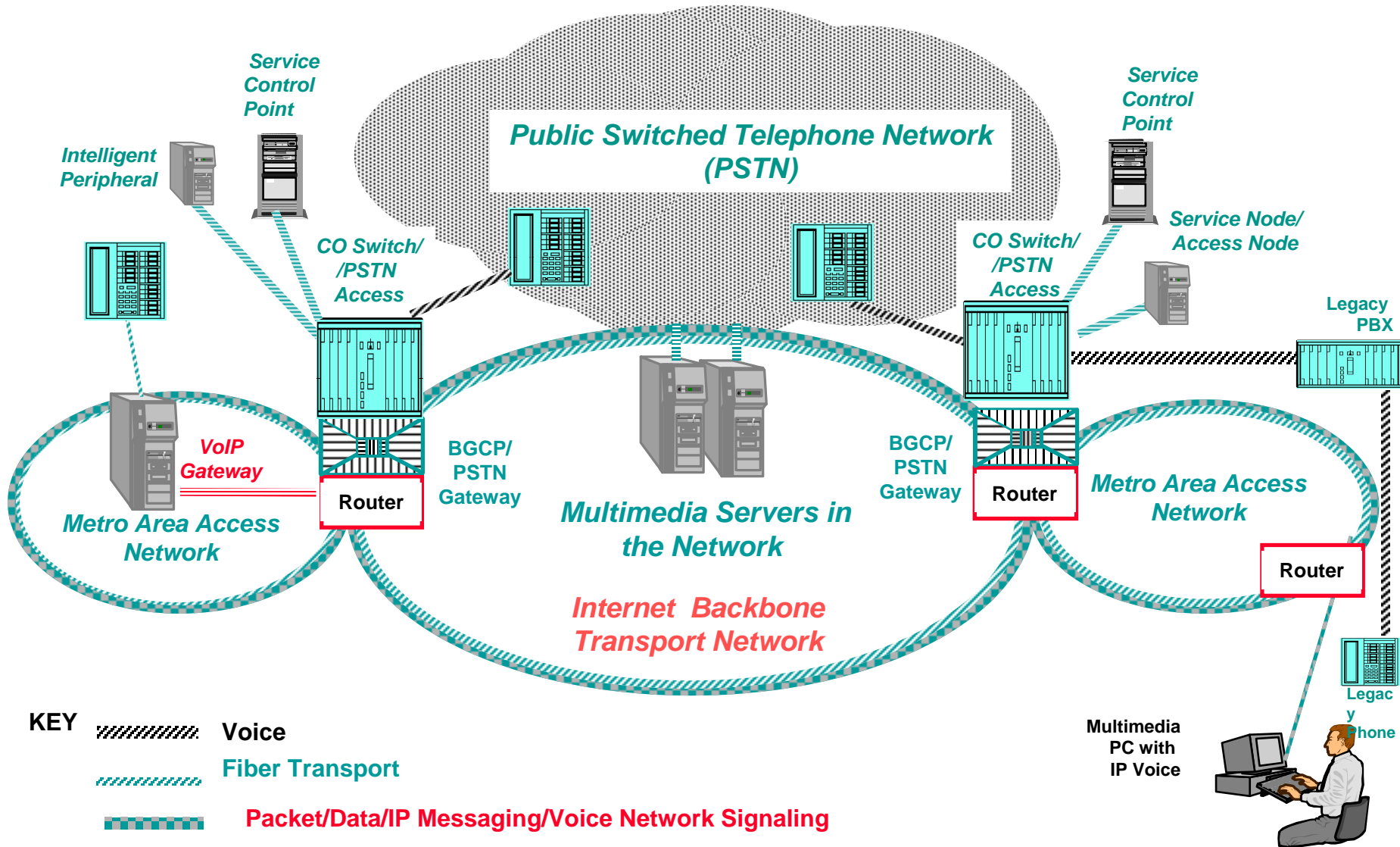
NTT DoCoMo Multimedia Vision



Data (IP) is Asynchronous.....Voice is Isochronous

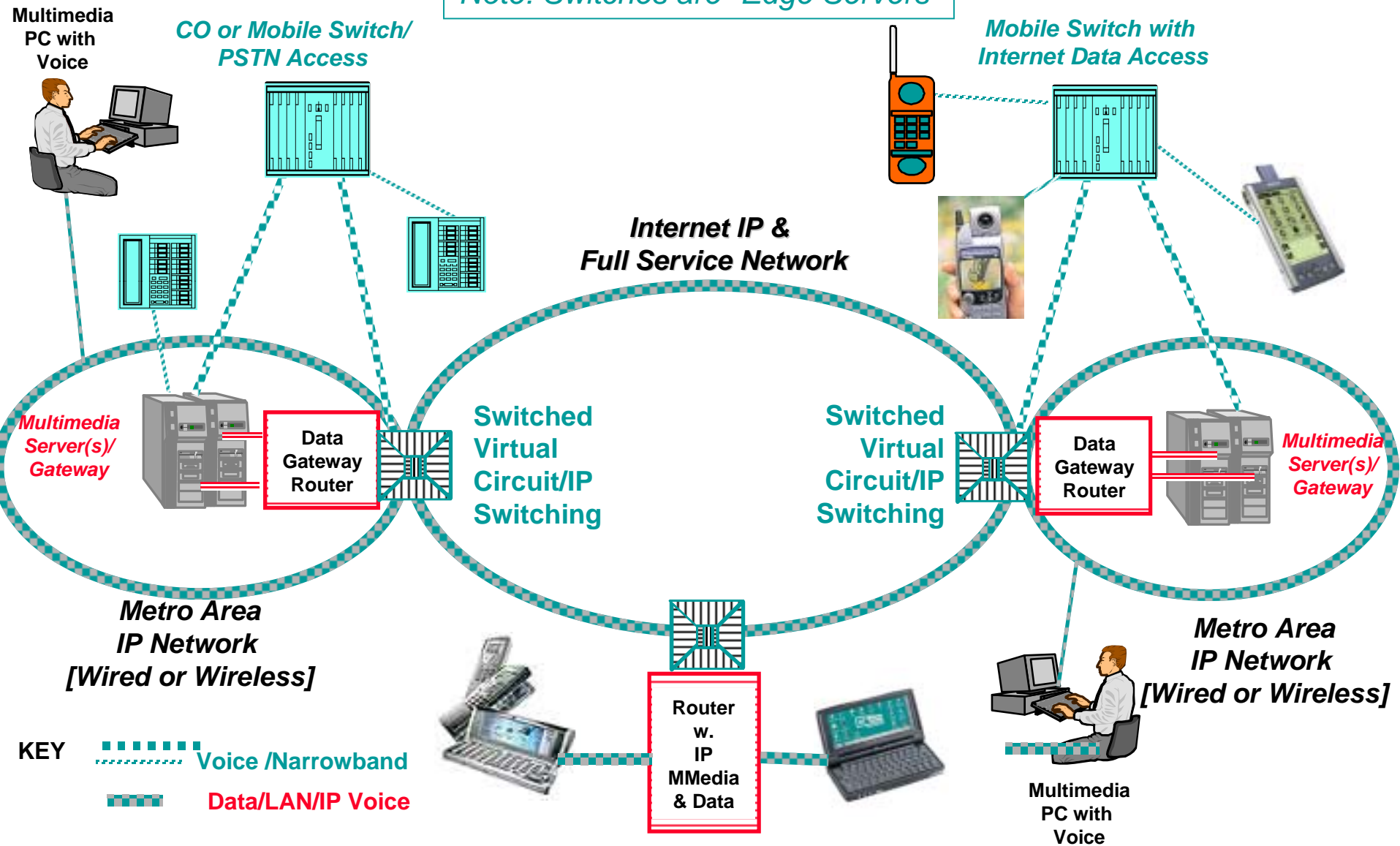


Complex Multi-Gateway Converged IP/Telephone Network

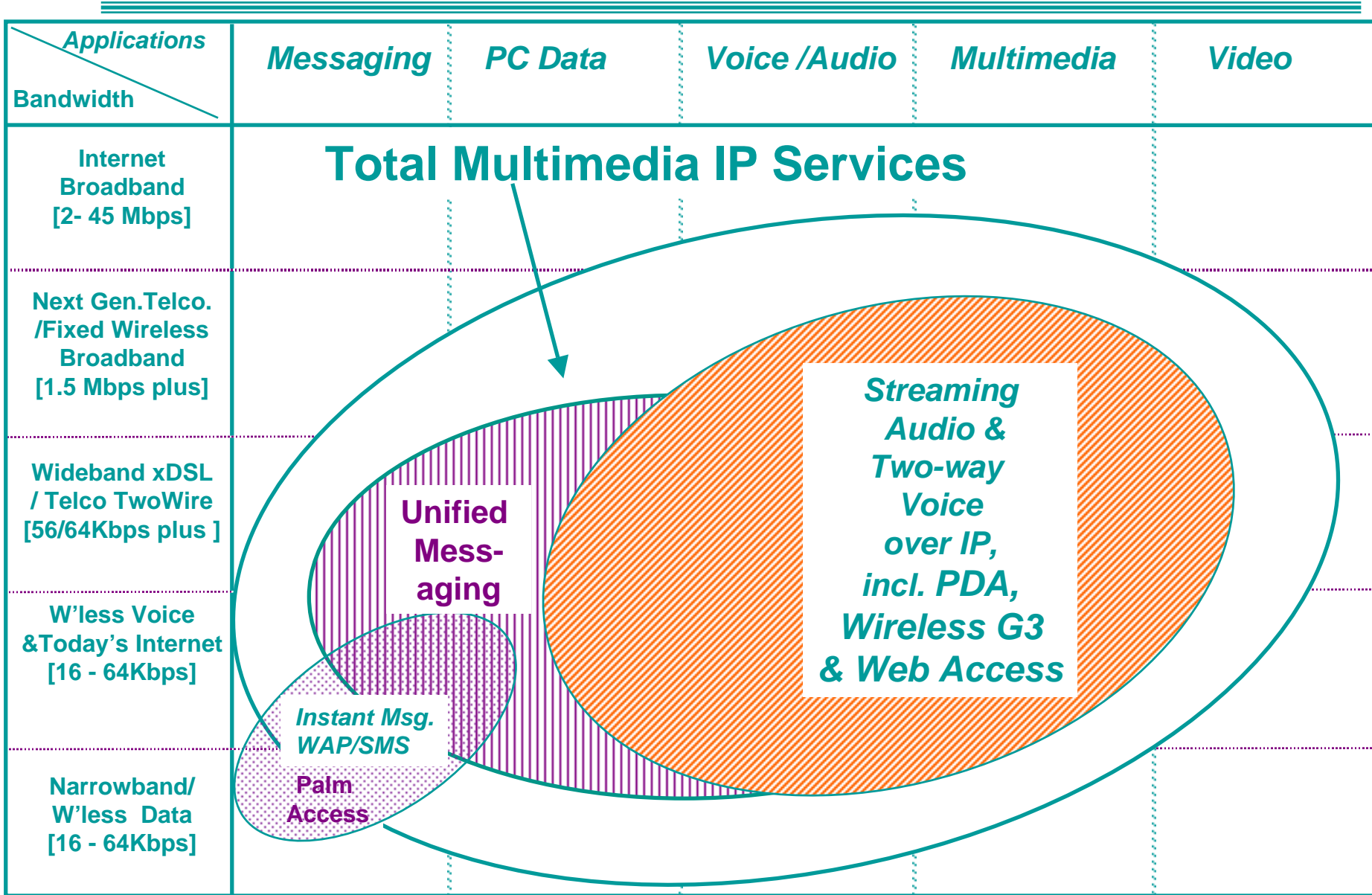


Simple Networks for Data & Multimedia (& On-Net Voice-over IP)

Note: Switches are "Edge Servers"



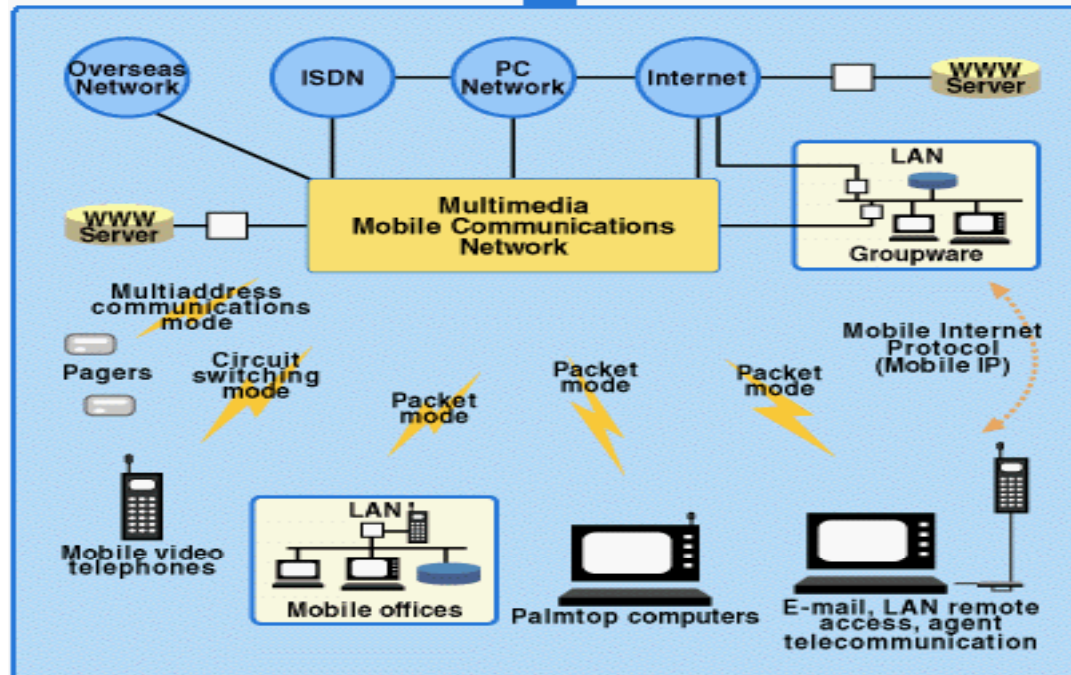
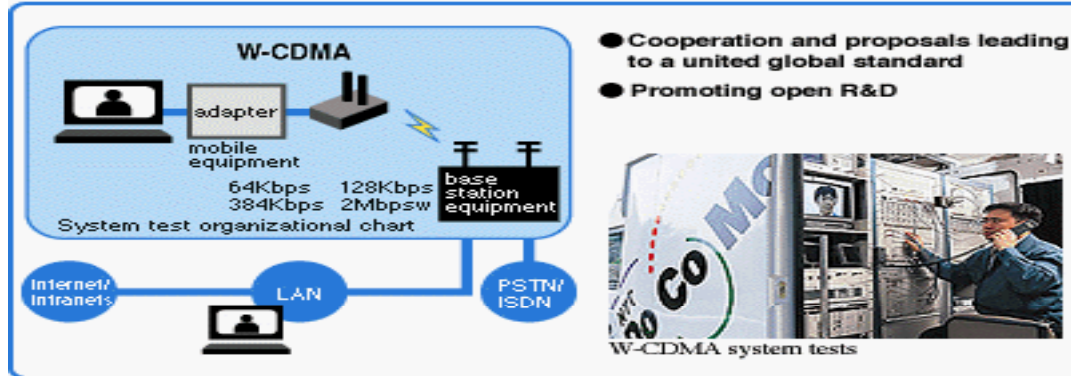
Multimedia & Data Services - Evolving Need for High Speed Broadband Access



NTT DoCoMo Multimedia Network Configuration

Note: Requirement for Multiple Packet and Circuit Modes with Variable & On-Demand Bandwidth]

NTT DoCoMo's Activities



Speakers

Dean S.K. Chang, Director Product Management
Aperto Networks

Dr. Jacob W. Jorgenson, CTO and Founder,
Malibu Networks