



PRESENTS

NETWORLD INTEROP

an INTEROP event

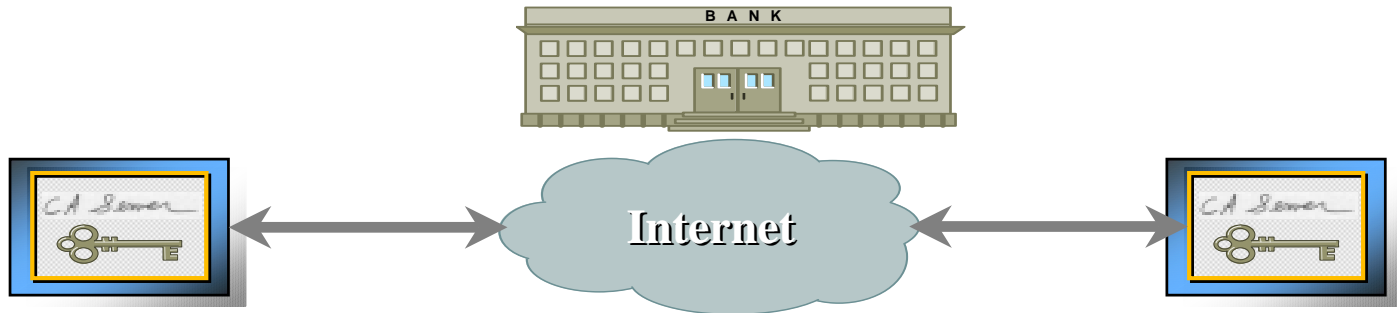
IPSec versus SSL

Bill Miller

Vice President, Marketing

Thursday, September 13, 2001





Internet Security

You've probably heard it all before!

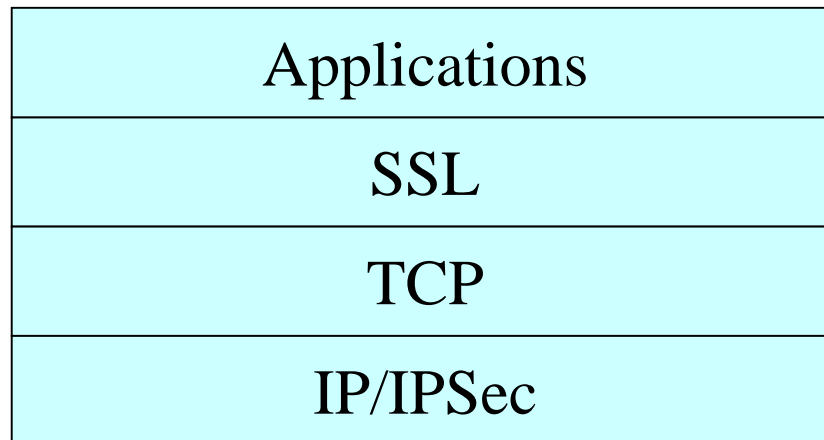
This panel is your new best friend – we will share how IPSec and SSL coexist peacefully and provide significant benefits to you!

Internet Security Assumptions

- The Internet is very vulnerable
- There are no perfect schemes for protecting privacy, confidentiality and threats against our data
- Confidentiality is desired by all users
- Best Practices and Policies are embryonic but improving
- The two dominant security protocols to address these issues are:
 - IPSec - IP Security
 - SSL - Secure Sockets Layer
- Lets explore these leading protocols

The Drivers for Secure Networking?

- Internet increasingly used for mission critical applications
- Privacy, integrity and protection is required for all transactions, applications and all connections
- IPSec and SSL attack the problems in different ways, and at different levels of the ISO model:
 - SSL – Transport Layer
 - IPSec – Network Layer



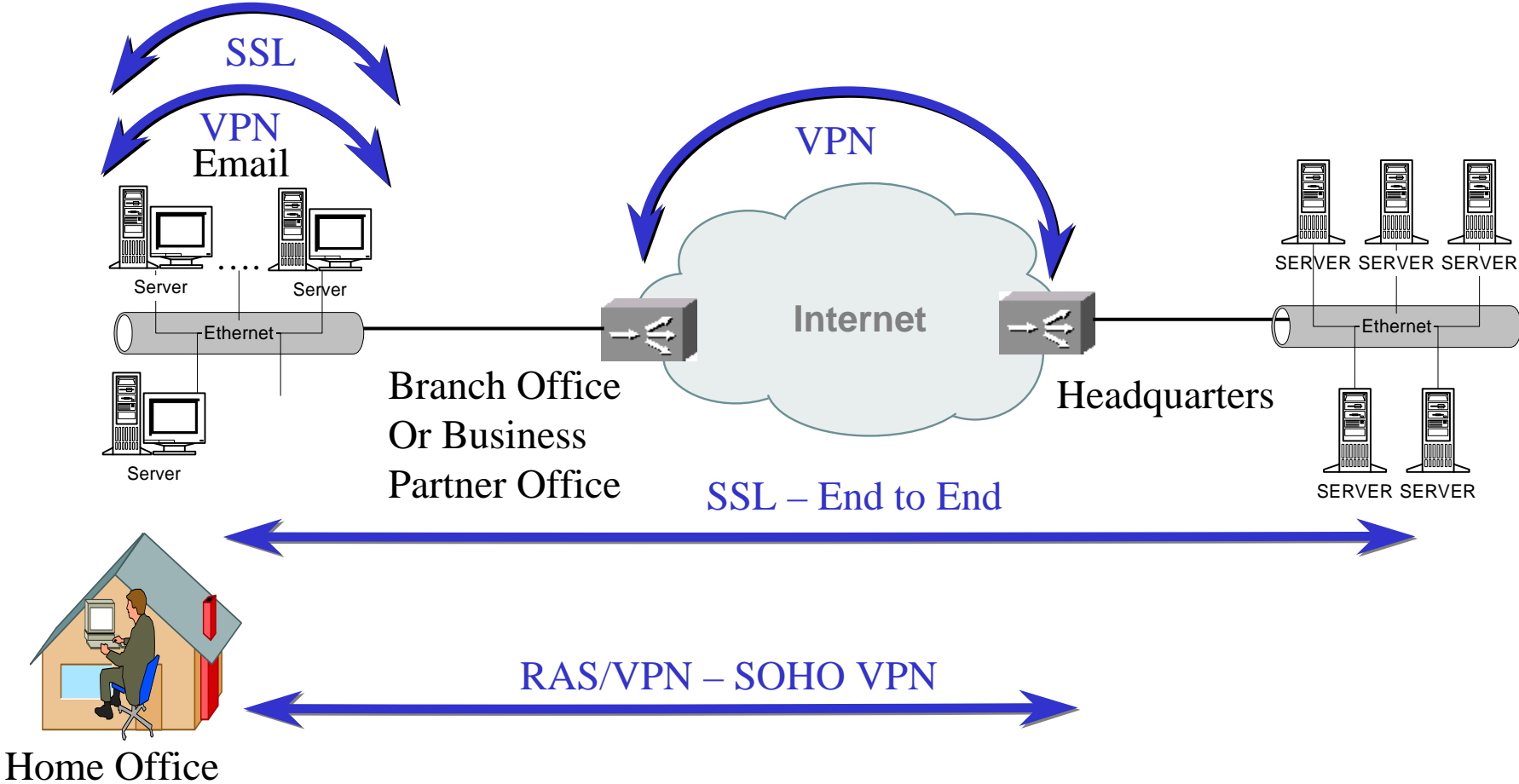
IPSec

- Dominant security protocol for VPNs
 - Primary use is for site-to-site (tunneling) connections
 - Used for Machine-to-machine (transport) connections inside the corporate local area network
- Traditionally good for bulk data movement
- Interoperability has been evasive between multiple vendors
- Scalability is limited by implementation of key management, complexity, and lack of good access control

SSL

- Built into virtually every web browser and web server
 - Application-to-application in client-server architecture
 - End-to-end connections
- Extensive granularity of access control
- Ideal for extranets and e-Commerce applications
- Strong authentication techniques
- Scalability previously limited by technology
- Previously, had weaknesses in bulk data transfer, but this is also changing with emerging technology solutions

Virtual Private Networks



SSL vs. IPSec Comparison Summary

IPSec

- Site-to-site/machine-to – machine/office-to-office
- Enables creation of secure tunnels within insecure channels – protection from outsiders!
- Encrypts all data once connected
- Complex configuration on each machine

SSL

- Ubiquitous secure access via web browsers and servers
- Protection from insiders
- Enables creation of secure sessions between any two people, applications, or combination anywhere
- Simple configuration

Conclusion – Each Fits in the Network!

- Coradiant
- Intel
- NetScreen
- Andes

