



PRESENTS

NETWORLD INTEROP

an INTEROP event

Enterprise-Class IP Voice

Barry Castle

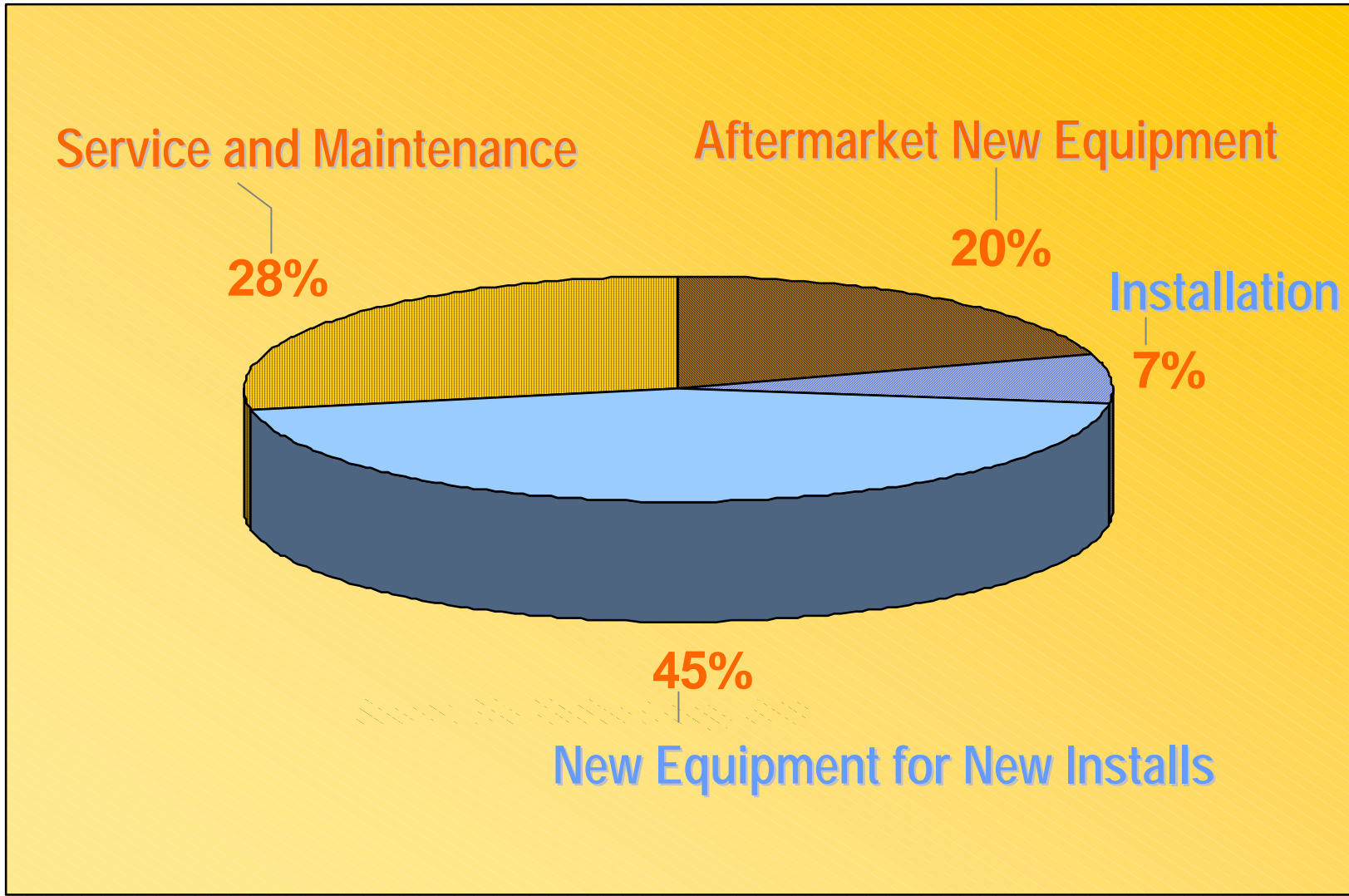
VP Marketing

Thursday Sept. 13, 2001

Criteria for Considering a new voice Architecture

- **Reliability**
 - Make and take calls irrespective of the state of the underlying network.
- **Business Performance**
 - Provide immediate improvement in manageability and organizational integration
- **Economics**
 - Provide demonstrable cost savings (beyond toll bypass)

Breakdown of \$20B US Spending



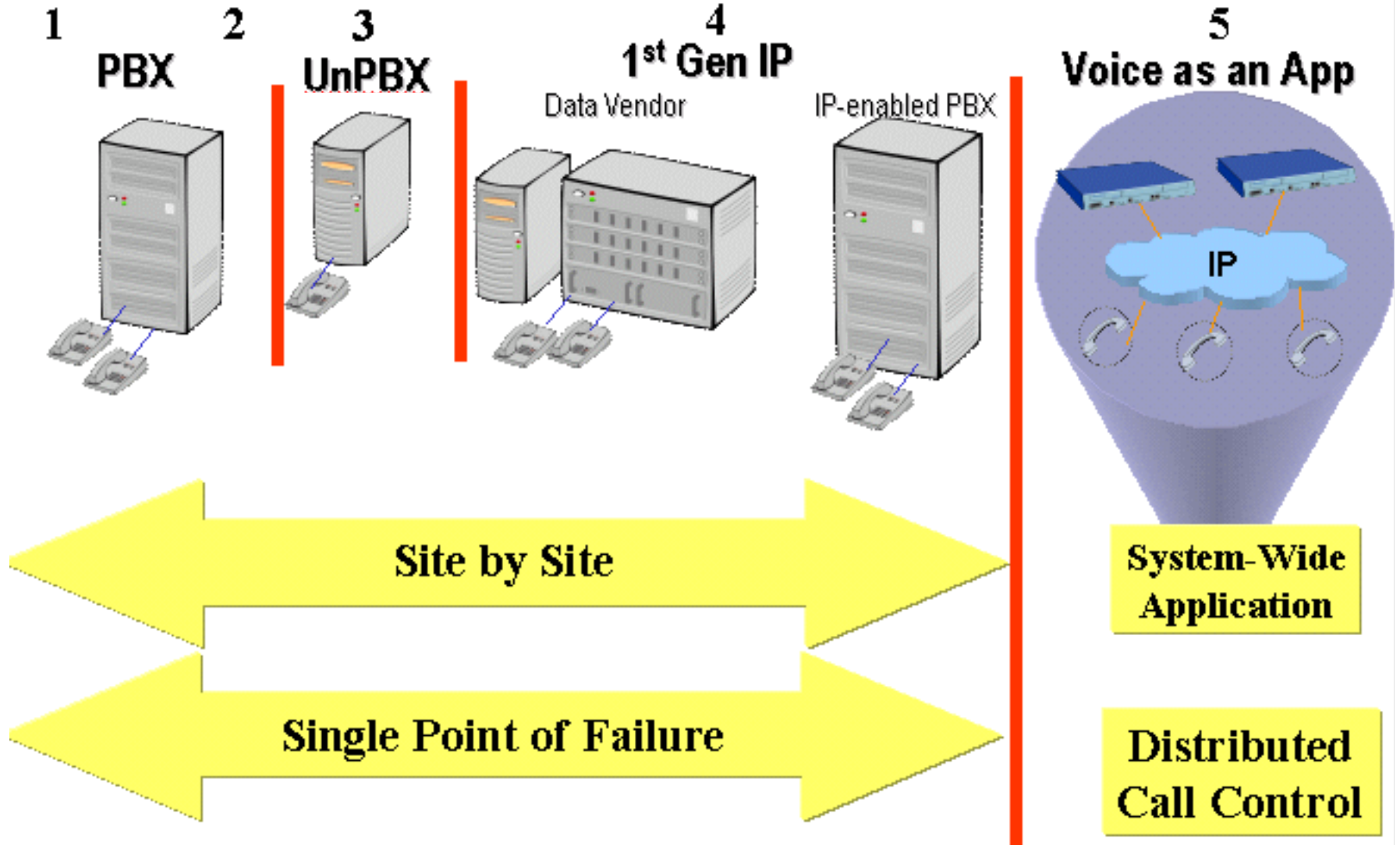
Source: The Yankee Group, 2000

Rate Potential Benefits of IP Voice

	Very Important
Lower Cost of Ownership	51%
Integrated Network Management	45%
Moves Adds and Changes	38%
One System Simplicity	34%
Call Center / CTI	26%

Source: Phillips Infotech (2000 Research Study)

Enterprise Voice Categories



Large Enterprise Site Solutions

The Enterprise

Branch Office

Regional Office

Head Quarters

Site
by
Site

Avaya

IP 600 (-400),
Definity Prologix(40-400)
Definity ONE(20-40)
Merlin Magix (15-200)

Definity BCS(80-400)
Definity ECSSi(2400)

Definity ECSr (200-25000)

Nortel

Norstar (BCM)
Meridian Option 11c (50-300)

Meridian Option 61c
(100-1000)

Meridian Option 81c
(1000-5000)

Mitel

Ipera 2000
SX-50 (20-120)

SX-200 (10-650)

SX-2000 LIGHT

3Com

NBX 25 NBX 100

SS3 NBX 750

Cisco

ICS (200)

MCS

MCS

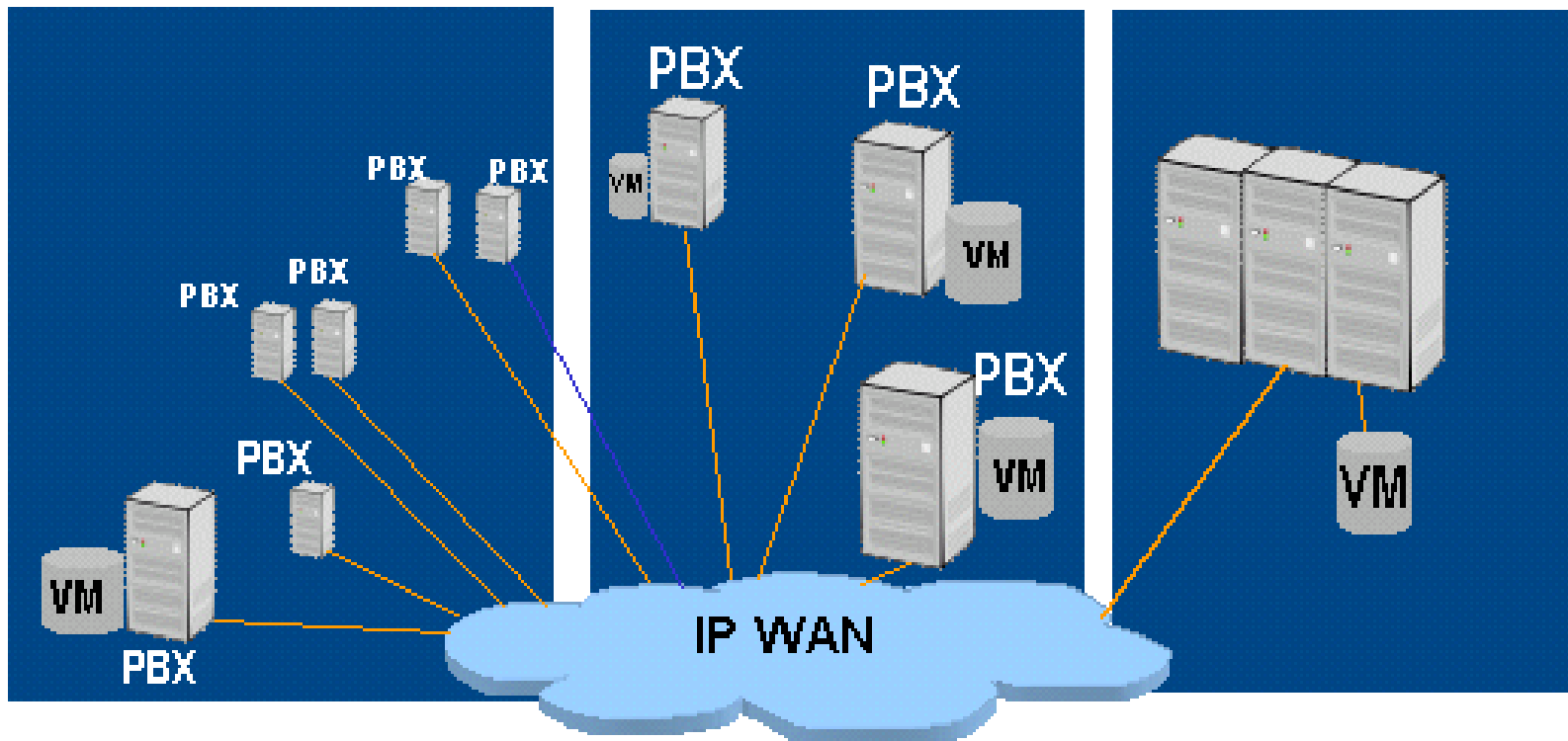
Large Enterprise Site Solutions

The Enterprise

Branch Offices

Regional Offices

Headquarters



Large Enterprise Single System Solution

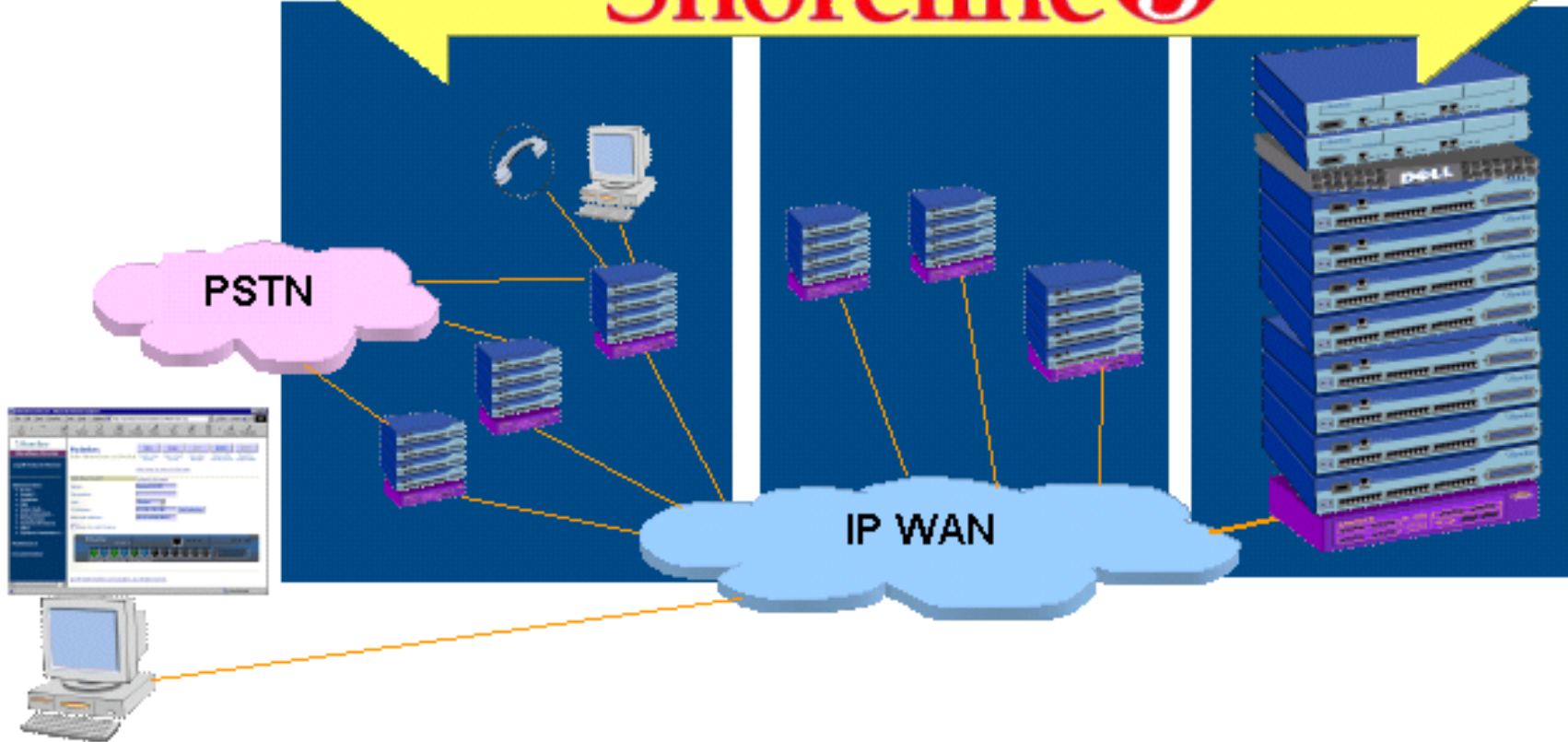
The Enterprise

Branch Offices

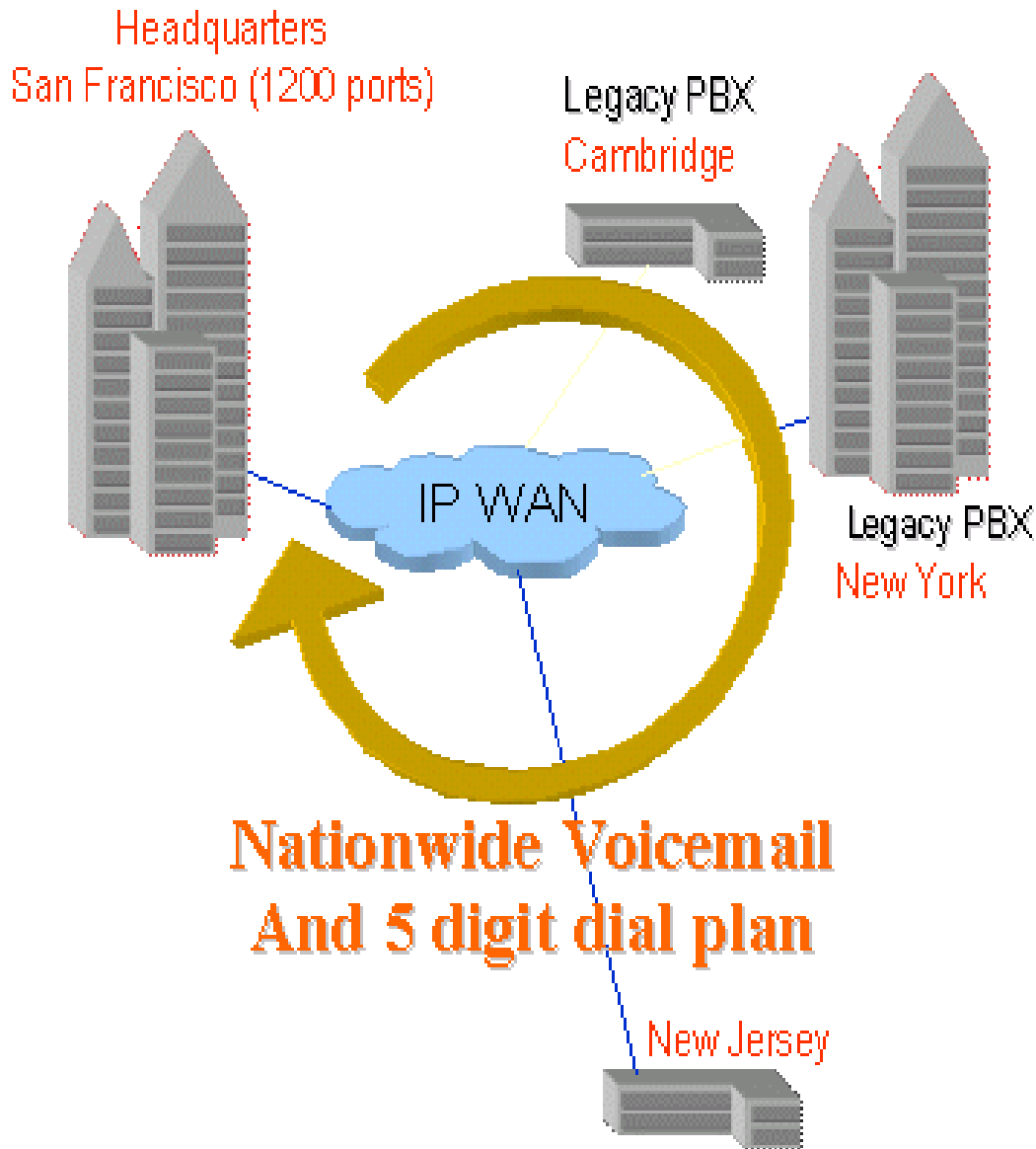
Regional Offices

Headquarters

Shoreline³™



Shoreline Customer Case Study



- ❖ Leading news/media organization
- ❖ **Phase 1: Nationwide seamless voice network**
 - ❖ Shoreline Voicemail nationwide
 - ❖ Single nationwide dial plan
 - ❖ Legacy ~~Avaya~~ and Nortel integration
- ❖ 1200+ employees (USA only)
- ❖ Standardized on Shoreline for Global deployment
- ❖ Wanted a low TCO voice network that could embrace ~~teleworking~~
- ❖ Immediate Saving of \$100K on cabling alone
- ❖ Competitor: ~~Avaya~~/Cisco
- ❖ Quote: "Shoreline simply offered us the best solution."

Shoreline Customer Case Study



R&D Champaign, Illinois

Seymour, Illinois

Kansas City, Kansas

Sprint WAN

Single System Management

Dublin, CA

Germantown, TN

R&D Greenville, Mississippi

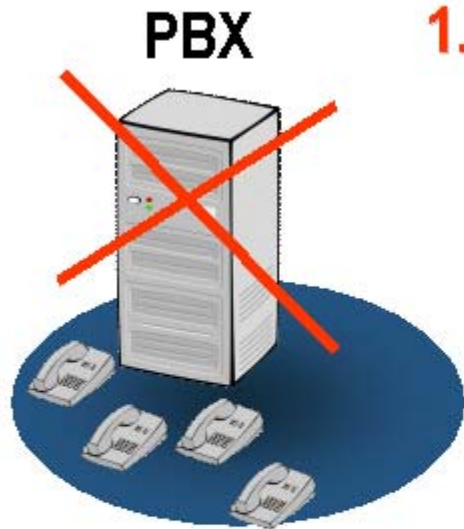
Headquarters
Walnut Creek, CA

Longwood, Florida

- ❖ Farm products supplier, division of Sumitomo LTD
- ❖ Nationwide, seamless voice network with 12 offices
- ❖ 500+ employees
- ❖ Migrated to IP voice in 1999
- ❖ Saved \$200k in support and maintenance expense in first year alone
- ❖ **BUSINESS2.0** *"VoIP equipment is so easy to operate that it's going to put the maintenance companies out of business"* Dennis Frost



Unmatched Reliability

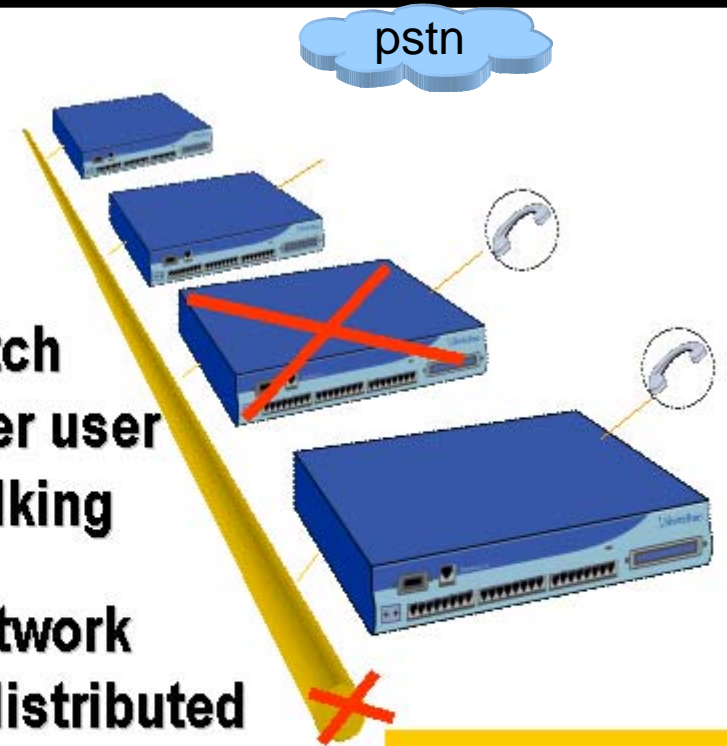


Single Point of Failure

**1. If a PBX goes down
Everyone is down**

**2. If a distributed Switch
went down Every other user
would just keep on talking**

**3. If the IP Network
Goes down, distributed
Call control keeps
Switches working
autonomously**



Distributed

Criteria for Considering a new voice Architecture

- **Reliability**

- Make and take calls irrespective of the state of the underlying network.

- **Business Performance**

- Provide immediate improvement in manageability and organizational integration

- **Economics**

- Provide demonstrable cost savings (beyond toll bypass)