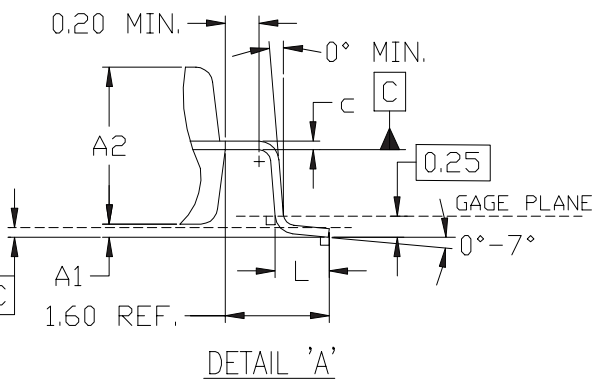
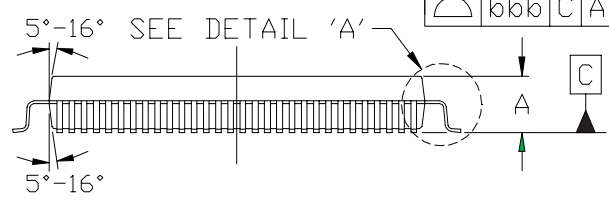
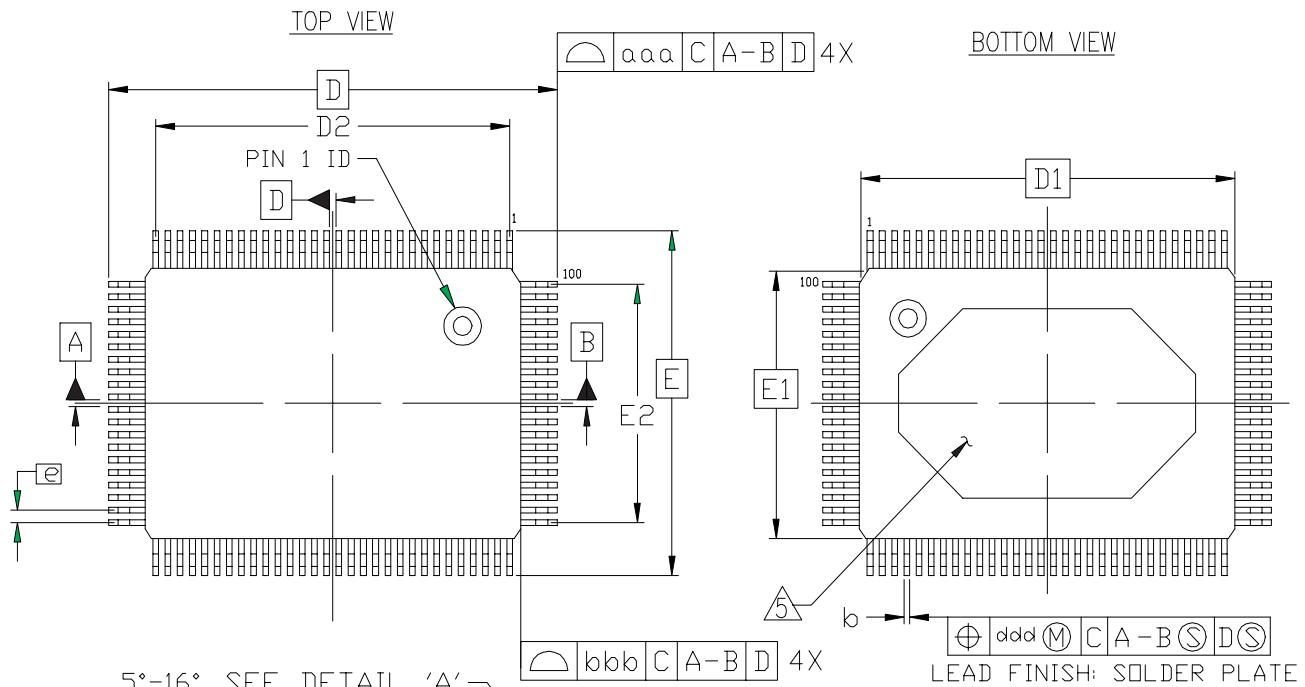


PQ/HQFP Packages - PQ100, HQ100



SYMBOL	MILLIMETERS		
	MIN.	NOM.	MAX.
A	\neq	\neq	3.40
A ₁	0.25	\neq	0.50
A ₂	2.50	2.70	2.90
D	23.20 BSC		
D ₁	20.00 BSC		
D ₂	18.85 REF.		
E	17.20 BSC		
E ₁	14.00 BSC		
E ₂	12.35 REF.		
L	0.73	0.88	1.03
e	0.65 BSC		
b	0.22	\neq	0.40
c	0.13	\neq	0.23
aaa	\neq	\neq	0.25
bbb	\neq	\neq	0.20
ccc	\neq	\neq	0.10
ddd	\neq	\neq	0.13

- NOTES:
1. ALL DIMENSIONS AND TOLERANCES CONFORM TO ANSI Y14.5M-1994.
 2. DIMENSIONS 'D1' AND 'E1' DO NOT INCLUDE MOLD PROTRUSION. ALLOWABLE MOLD PROTRUSION IS 0.25mm PER SIDE.
 3. THE TOP OF PACKAGE MAY BE EQUAL TO OR SMALLER THAN THE BOTTOM OF PACKAGE BY 0.15 MILLIMETERS.
 4. PACKAGE CONFORMS TO JEDEC OUTLINE MS-022-GC1
- THE SAME PACKAGE DIMENSIONS APPLY FOR THERMALLY ENHANCED PRODUCTS. HEAT SINK IS ADDED. THE PACKAGE CODE IS 'HQ'.

100-PIN PQFP (PQ100)
 100-PIN HEAT SINK PQFP (HQ100)