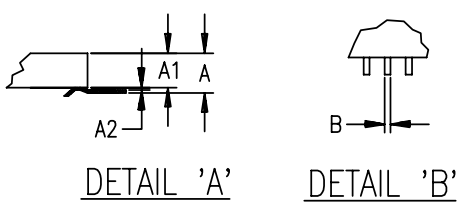
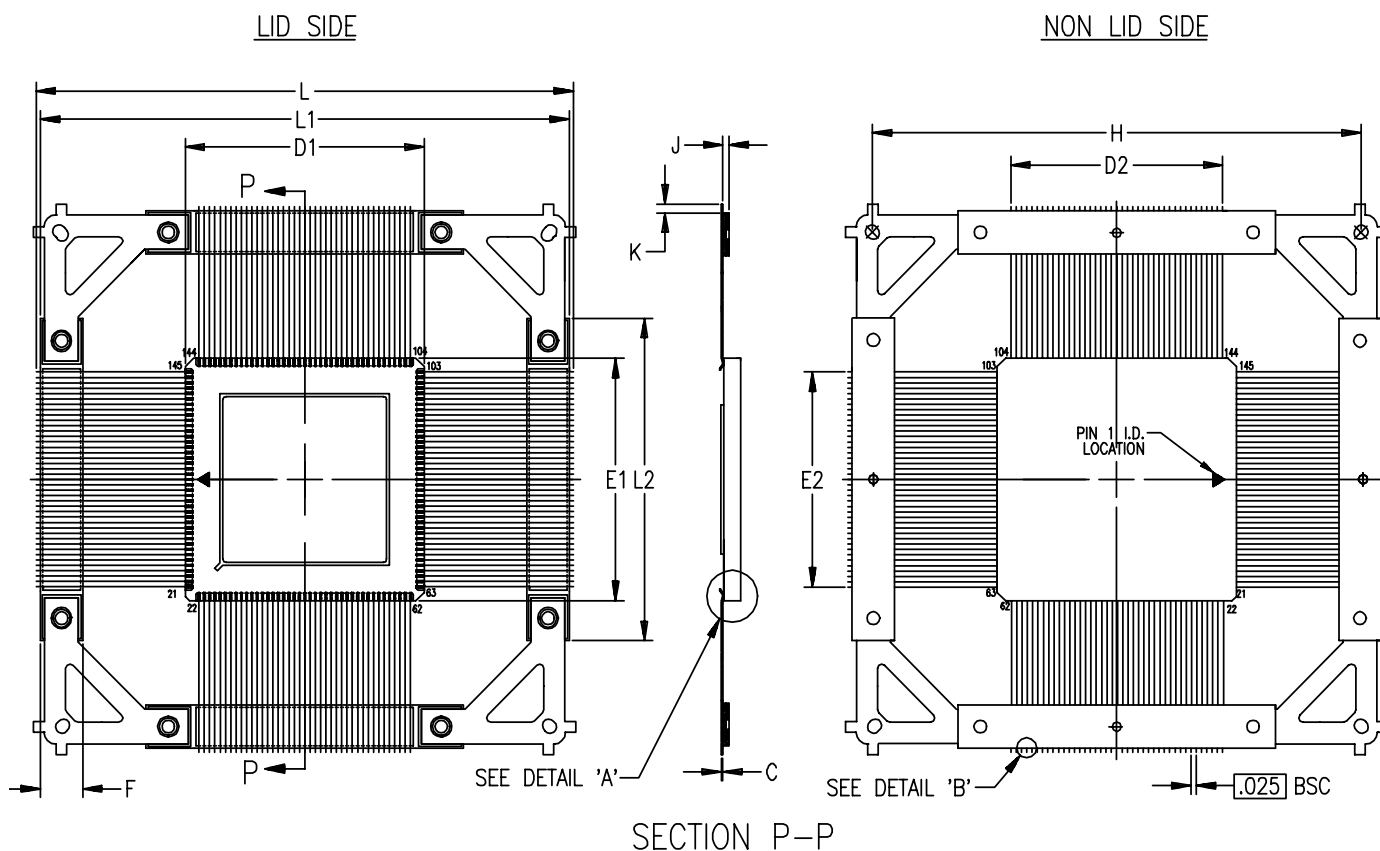


Ceramic Brazed Packages - CB164



NOTES:

1. ALL DIMENSIONS AND TOLERANCES CONFORM TO ANSI Y14.5M-1982
2. SYMBOL "N" IS THE NUMBER OF TERMINALS.
3. PACKAGES ARE SHIPPED UNFORMED.
4. LEAD FINISH: GOLD (50 MICROINCHES MINIMUM) OVER NICKEL PER MIL-I-38535

SYMBOL	INCHES		
	MIN.	NOM.	MAX.
A	$\cancel{.120}$	$\cancel{.120}$.130
A1	$\cancel{.110}$	$\cancel{.110}$.110
A2	$\cancel{.020}$	$\cancel{.020}$.020
B	.007	$\cancel{.007}$.012
C	.005	.006	.009
D1/E1	1.120	1.130	1.145
D2/E2	1.000 BSC		
F	.175	.200	.225
H	2.300 BSC		
J	.030	.035	.040
K	$\cancel{.020}$	$\cancel{.020}$.020
L	$\cancel{2.580}$	$\cancel{2.580}$	2.580
L1	2.485	2.500	2.505
L2	1.480	1.500	1.520
N	164		

164-PIN CERAMIC BRAZED CQFP (CB164)
(XC3000 VERSION)