

# New JTAG Programmer Software for ISP

The new JTAG Programmer tool represents a major step forward in the evolution of in-system programming (ISP) download and test software.

Using the new JTAG Programmer graphical user interface, designers have immediate access to all of the ISP functionality provided by XC9500 CPLD 1149.1-compliant devices. The structure of the boundary-scan chain is readily visible and the status of each part in the chain is clearly indicated on the topology diagram.

The JTAG Programmer user interface is identical in its look and feel across all plat-

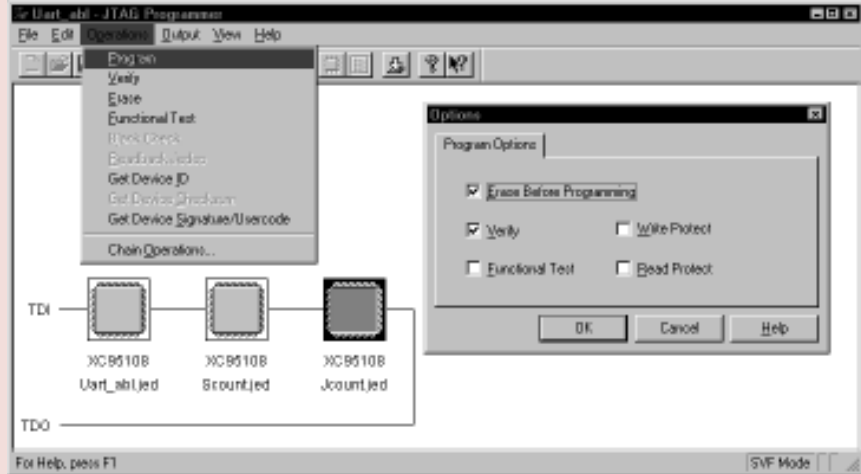
forms (Sun, HP, PC). The same GUI can be used to download either via the parallel download cable (JTAG) or serial download cable (XChecker) as well as being used to generate serial vector format (SVF) files for easy interfacing to embedded processors, automatic test equipment, or third-party tools.

As with EZTag, JTAG Programmer provides a simple-to-use interface that shields the end user from the intricacies of the boundary-scan protocol. JTAG Programmer, however, adds more flexibility including the support of additional programming options like:



- Ability to skip erase before programming.
- Automatic detection of new XC9500 silicon features.
- Ability to override write protection.
- Automatic detection of programming characteristics of silicon.

JEDEC files generated from XACTstep version 6.X software are 100% compatible with JTAGProgrammer so you can use your archived JEDEC files without modification in the new JTAGProgrammer environment.



JTAGProgrammer runs on SunOS 4.x (Solaris 1.X), SunOS 5.X (Solaris 5.X), HP UX 9.X and 10.X, Windows 95, and Windows NT 4.0. ◆