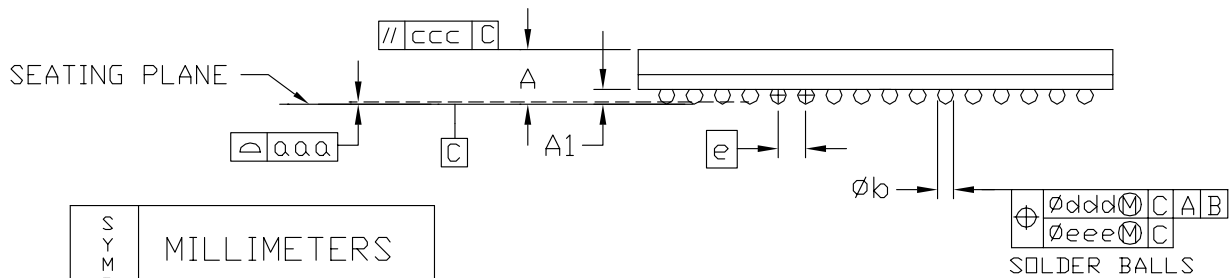
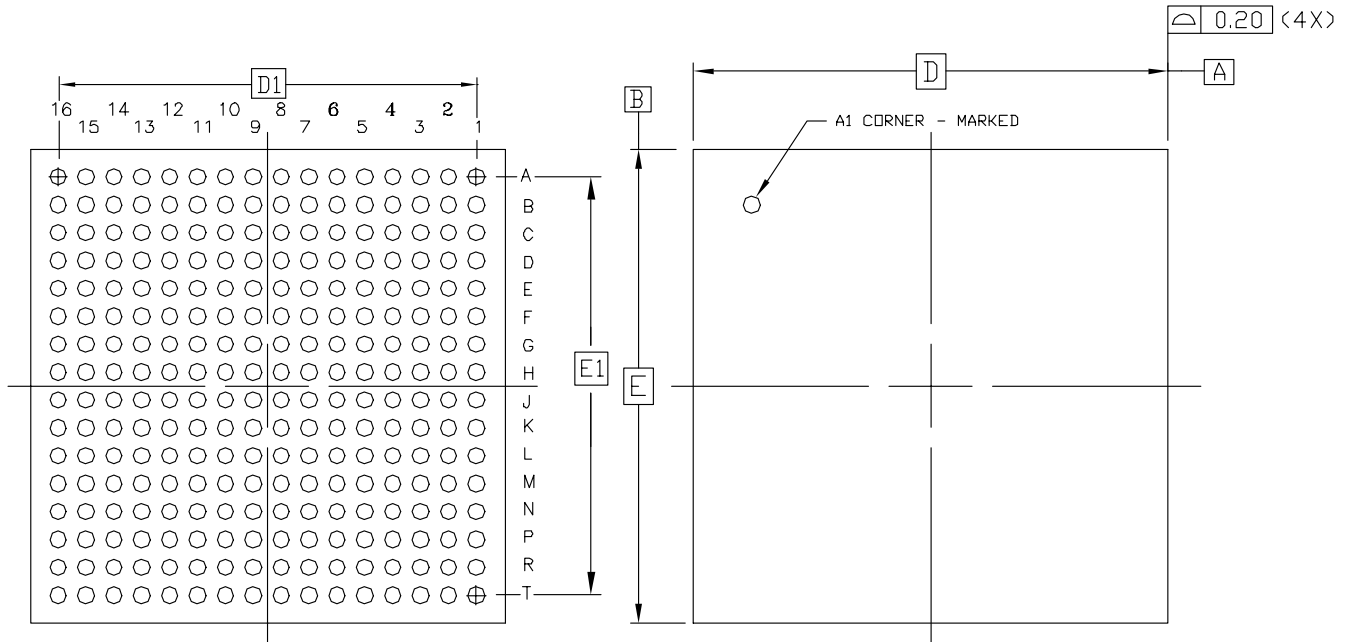


BOTTOM VIEW

TOP VIEW



SYMBOL	MILLIMETERS		
	MIN.	NOM.	MAX.
A	$\cancel{0.35}$	1.40	1.55
A ₁	0.35	0.40	0.50
D/E	17.00 BSC		
D ₁ /E ₁	15.00 REF		
e	1.00 BSC		
ϕb	0.40	0.50	0.60
aaa	$\cancel{0.15}$	$\cancel{0.15}$	0.15
ccc	$\cancel{0.15}$	$\cancel{0.15}$	0.15
ddd	$\cancel{0.25}$	$\cancel{0.25}$	0.25
eee	$\cancel{0.10}$	$\cancel{0.10}$	0.10
M	16		

NOTES:

1. ALL DIMENSIONS AND TOLERANCES CONFORM TO ASME Y14.5M-1994
2. SYMBOL 'M' IS THE BALL MATRIX SIZE.
3. CONFORMS TO JEDEC MS-034 AAF-1 EXCEPT FOR THE SIZE OF BALL

256-BALL FINE PITCH THIN BGA (FT256)