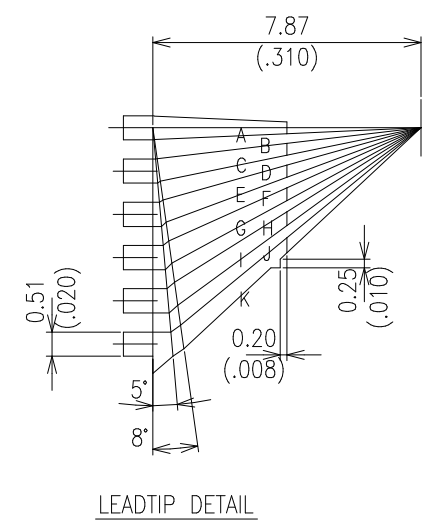
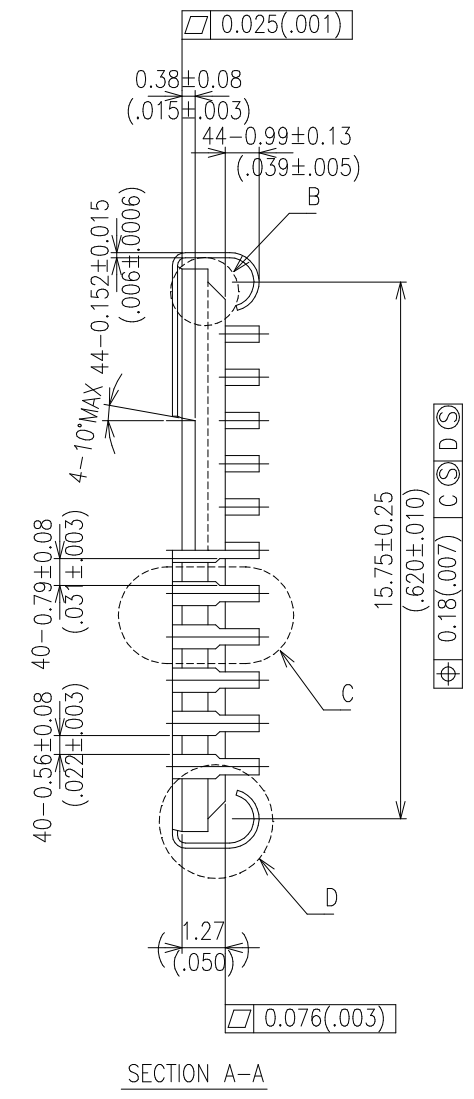
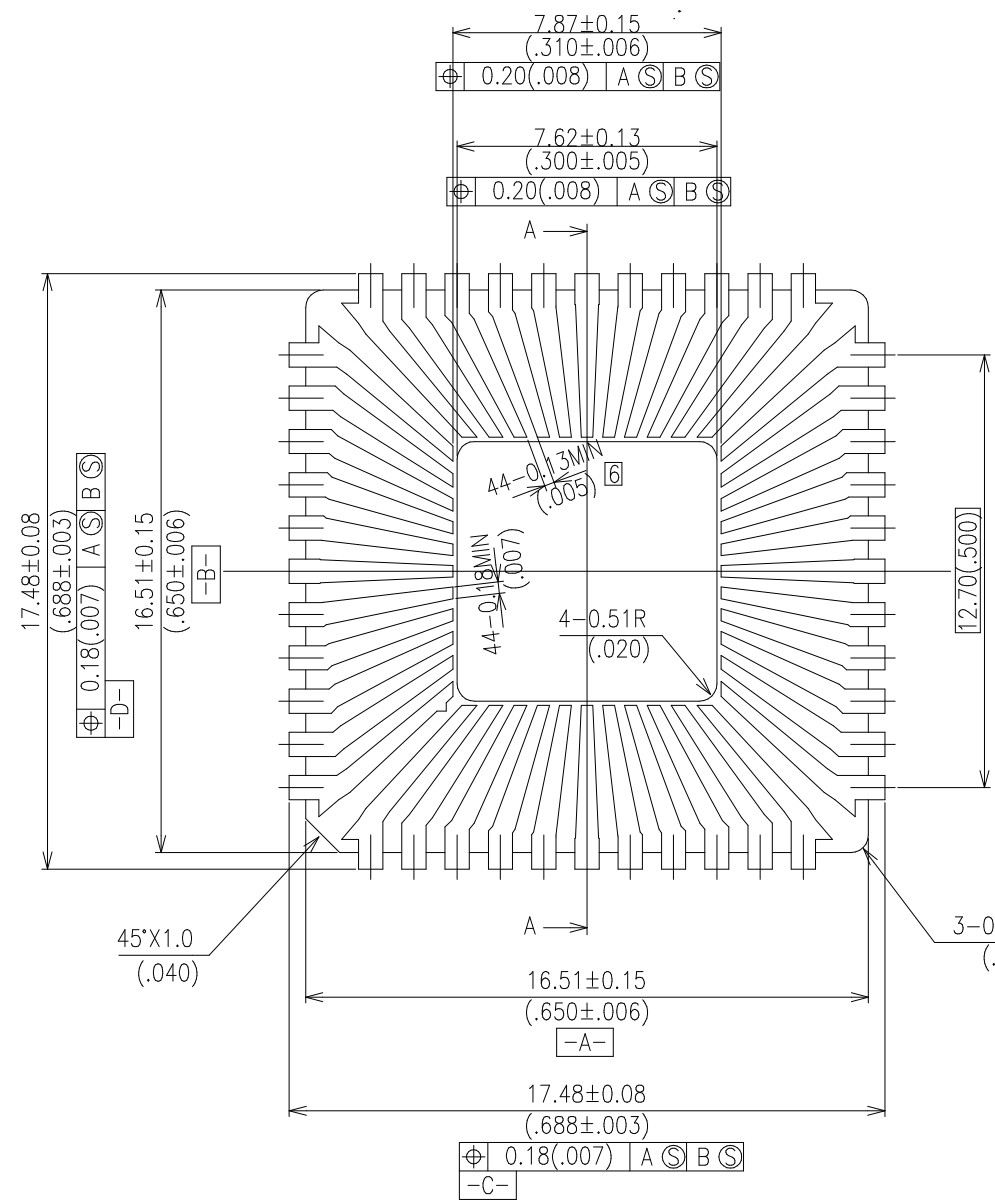


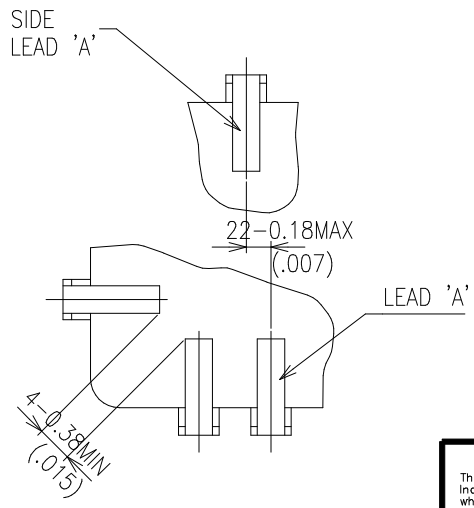
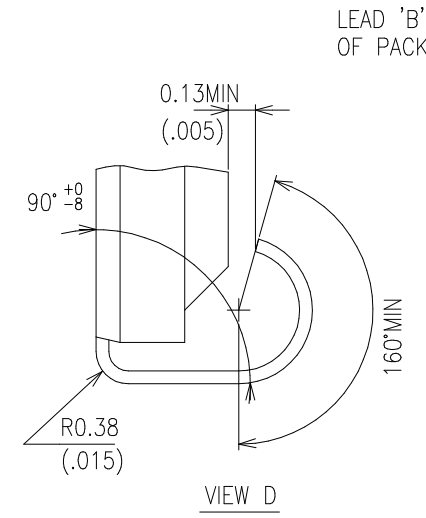
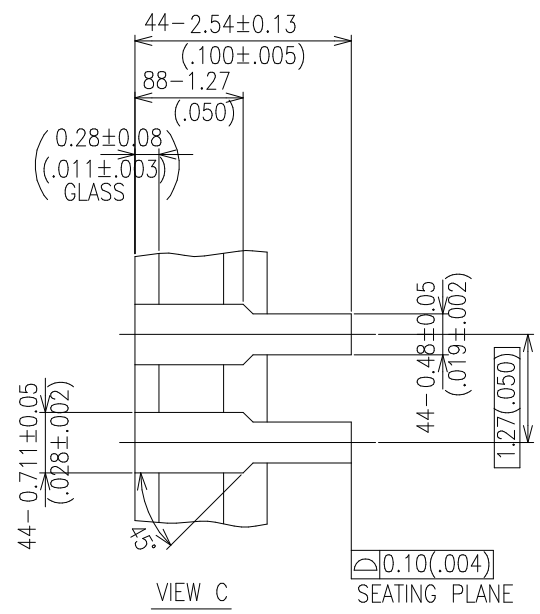
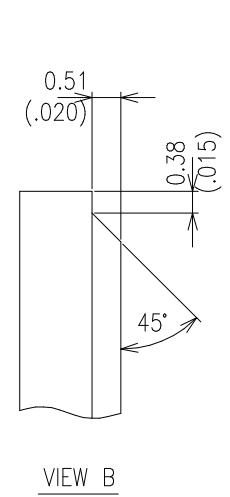
ZONE	REV	REVISION DESCRIPTION	DATE	DRAWN	CHECK	APPVD
	01	INITIAL RELEASE PER DCN #		ACAD		



A	2.49 °
B	6.68 °
C	11.55 °
D	15.62 °
E	20.29 °
F	24.14 °
G	28.51 °
H	32.09 °
I	36.11 °
J	39.37 °
K	43.01 °

NOTES:

- PACKAGE BODY SHALL BE BLACK CERAMIC TO OPAQUE 90-94% AL<sub>2</sub>O<sub>3</sub>
- LEADFRAME MATERIAL SHALL BE ALLOY 42, OR APPROVED EQUIVALENT.
- LEAD TIPS SHALL BE ALUMINIZED, 100 TO 600 MICROINCHES . 0.89(.035) MINIMUM LENGTH WITH NO PULL-BACK.
- DIE ATTACH AREA SHALL BE Au-120 MICROINCH MIN.
- LEAD TIP OVERHANG INTO CAVITY AREA SHALL NOT EXCEED 0.25(.010) LEAD TIPS SHALL BE FLAT WITHIN 0.10(.004).
- SOLDER GLASS SHALL BE DEVITREOUS; SUCH AS 7583 OR CV-111
- MAXIMUM CERAMIC AND GLASS FLOW ON LEADS SHALL BE REFERENCED FROM THE LEAD CENTERLINE.
- THERE SHALL BE NO NICKS, CUTS OR GLASS IN THE LEAD BEND RADIUS.
- THERE SHALL BE NO UNSUPPORTED PADS GREATER THAN 0.25(.010).
- ADJACENT BOND PADS MUST BE CO-PLANAR WITHIN 0.15(.006). TOTAL CO-PLANARITY NO GREATER THAN 0.25(.010)
- MINIMUM INTERNAL METAL SEPARATION SHALL BE 0.13(.005)
- EACH SHIPMENT SHALL BE ACCOMPANIED BY A CERTIFICATE OF COMPLIANCE.
- PACKING CONTAINERS SHALL BE MARKED WITH THE FOLLOWING:  
A. P.O. NUMBER  
B. XILINX REFERENCE PART NUMBER  
C. QUANTITY IN SHIPMENT.  
D. VENDOR NAME  
E. VENDOR LOT NUMBER OR DATE OF MANUFACTURE.
- VENDOR REFERENCE NO: QC-044248-J-1



CONFIDENTIAL This document is the property of Xilinx Incorporated and contains information which is confidential and proprietary to Xilinx. No part of this document may be copied, reproduced or disclosed to third parties without the prior written consent of Xilinx Incorporated.		<b>XILINX</b>		TITLE 44LD QUAD TYPE-J .300 SQ. CAVITY	
DRAWN BY ACAD	DATE 3/11/98	SIZE B	DRAWING NUMBER PBF0033	REV. 01	
CHECKED BY DF	DATE 3/11/98				
ENG APPROVAL	DATE				
MFG APPROVAL	DATE				
TOLERANCES ∠ .X .XX .XXX ±1% ±1% NLT.01 ±.005 Unless otherwise specified, dimensions are in mm (inches).		FSCM 68994		SCALE NONE	SHEET 1 OF 1