

ZONE	REV	REASON DESCRIPTION	DATE	DRAWN	APP'VD	DATE
	01	Initial Release per DCN 13381	8/16/01	HD	HD	8/20/01
	02	Change per DCN 13815	4/4/02	HD		

CONFIDENTIAL

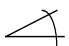
This document is the property of Xilinx Incorporated and contains information which is confidential and proprietary to Xilinx. No part of this document may be copied, reproduced or disclosed to third parties without the prior written consent of Xilinx Incorporated.



TITLE:

PACKAGE OUTLINE
132 BALL CSP
0.5mm PITCH – CP132

TOLERANCES

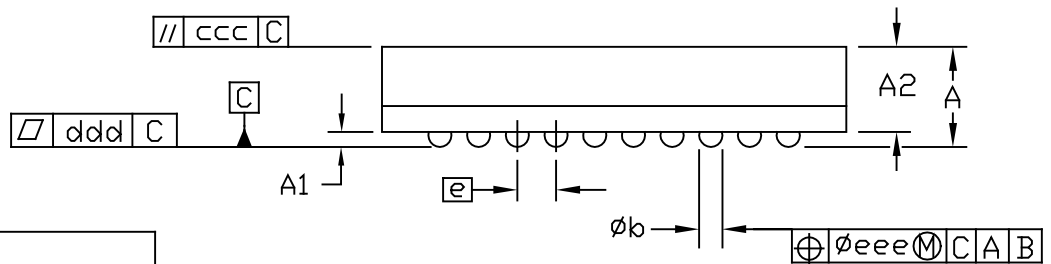
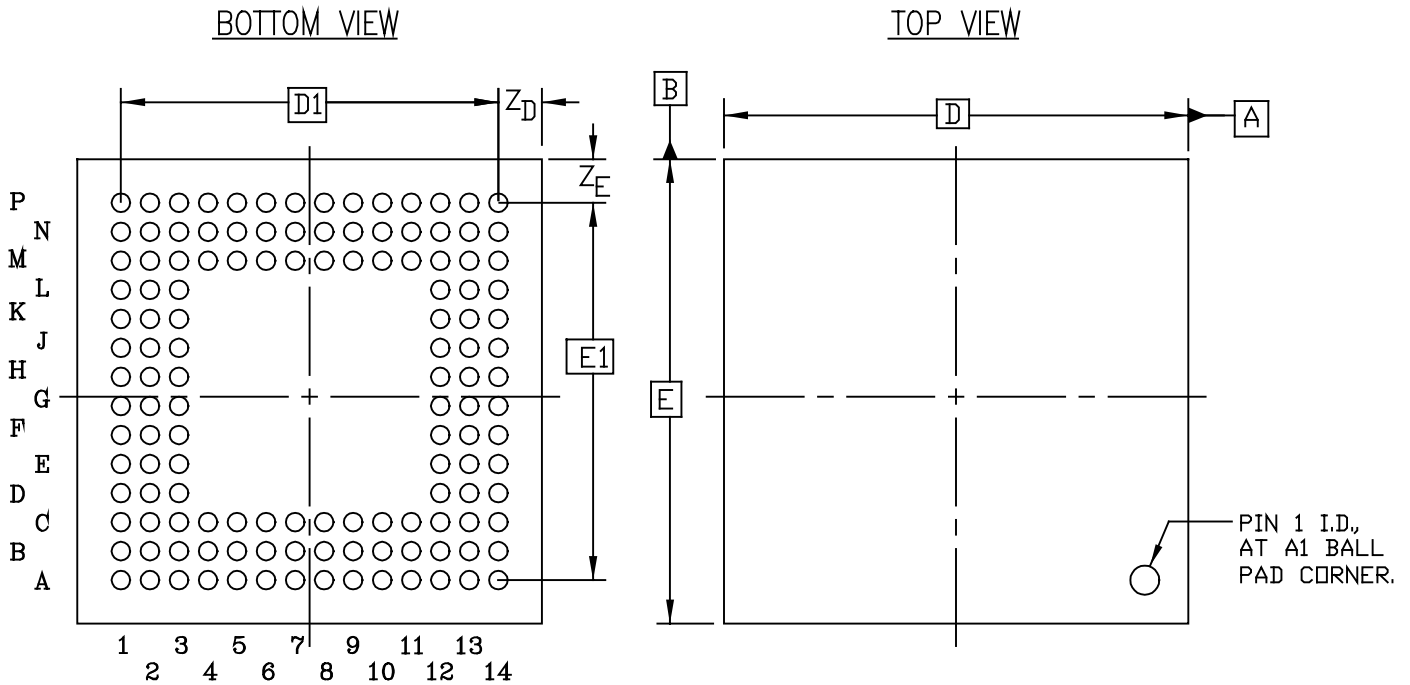
 .X .XX .XXX
1° 0.1mm 0.05mm

Unless otherwise specified, dimensions are in millimeters.

SIZE	DRAWING NUMBER	REV.
A	OBG0042	02

SCALE NONE	SHEET 1 OF 2
------------	--------------

CP132



SYMBOL	MILLIMETERS		
	MIN.	NOM.	MAX.
A	\approx	1.00	1.10
A ₁	0.15	0.20	0.25
D/E	7.90	8.00	8.10
D ₁ /E ₁	6.50 BSC		
e	0.50 BSC		
ϕb	0.25	0.30	0.35
ccc	\approx	\approx	0.10
ddd	\approx	\approx	0.08
eee	\approx	\approx	0.15
Z _D /Z _E	0.60	0.75	0.90
M	14		

NOTES:

1. ALL DIMENSIONING AND TOLERANCING CONFORM TO ASME Y14.5M-1994
2. SYMBOL "M" IS THE PIN MATRIX SIZE.

CONFIDENTIAL

This document is the property of Xilinx Incorporated and contains information which is confidential and proprietary to Xilinx. No part of this document may be copied, reproduced or disclosed to third parties without the prior written consent of Xilinx Incorporated.



SIZE

A

DRAWING NUMBER

OBG0042

REV

02

SCALE NONE

SHEET 2 OF 2