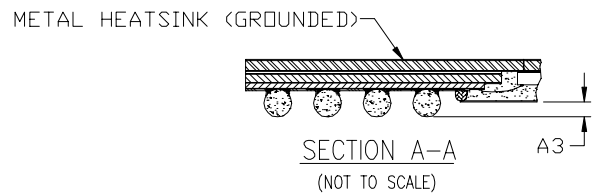
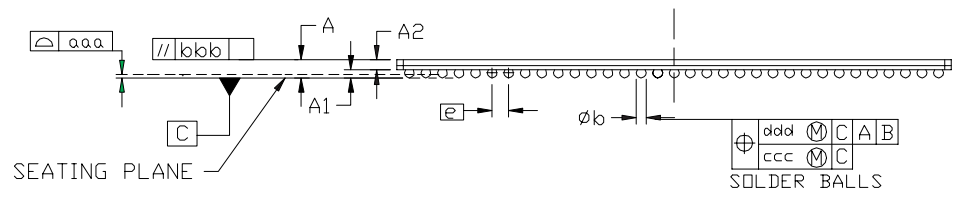
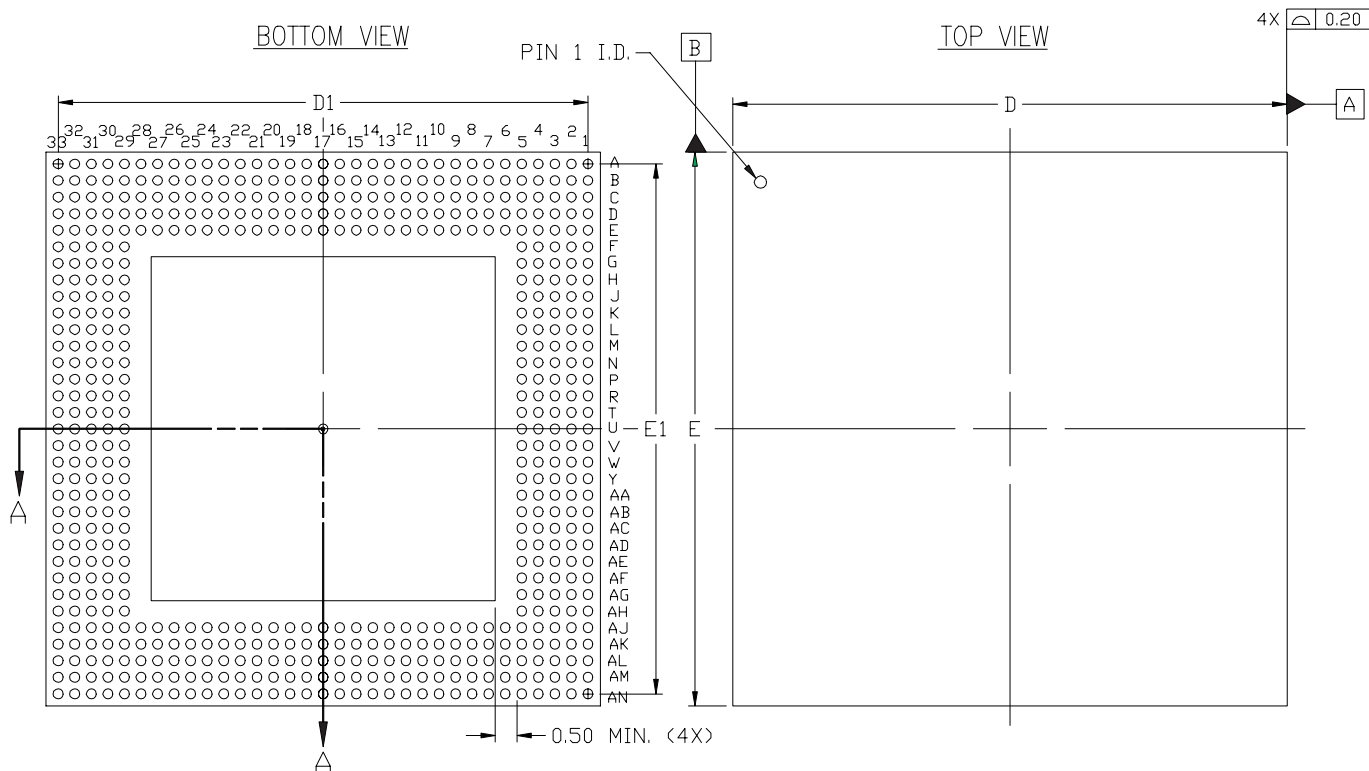


# BGA Packages - BG560



SYMBOL	MILLIMETERS			NOTE
	MIN.	NOM.	MAX.	
A	1.10	1.38	1.70	
A <sub>1</sub>	0.50	0.60	0.70	
A <sub>2</sub>	0.60	<i>∅</i>	1.00	
A <sub>3</sub>	0.20	<i>∅</i>	<i>∅</i>	
D/E	42.50 BSC			
D <sub>1</sub> /E <sub>1</sub>	40.64 REF.			
e	1.27 BSC			
φ <sub>b</sub>	0.60	0.75	0.90	
aaa	<i>∅</i>	<i>∅</i>	0.20	
ccc	<i>∅</i>	<i>∅</i>	0.15	
bbb	<i>∅</i>	<i>∅</i>	0.25	
ddd	<i>∅</i>	<i>∅</i>	0.30	
M	33			2

### NOTES:

1. ALL DIMENSIONS AND TOLERANCES CONFORM TO ANSI Y14.5M-1994
2. SYMBOL 'M' IS THE PIN MATRIX SIZE.
3. CONFORMS TO JEDEC MO-192-BAV-1 (DEPOPULATED)

## 560 BALL PLASTIC BGA (BG560)