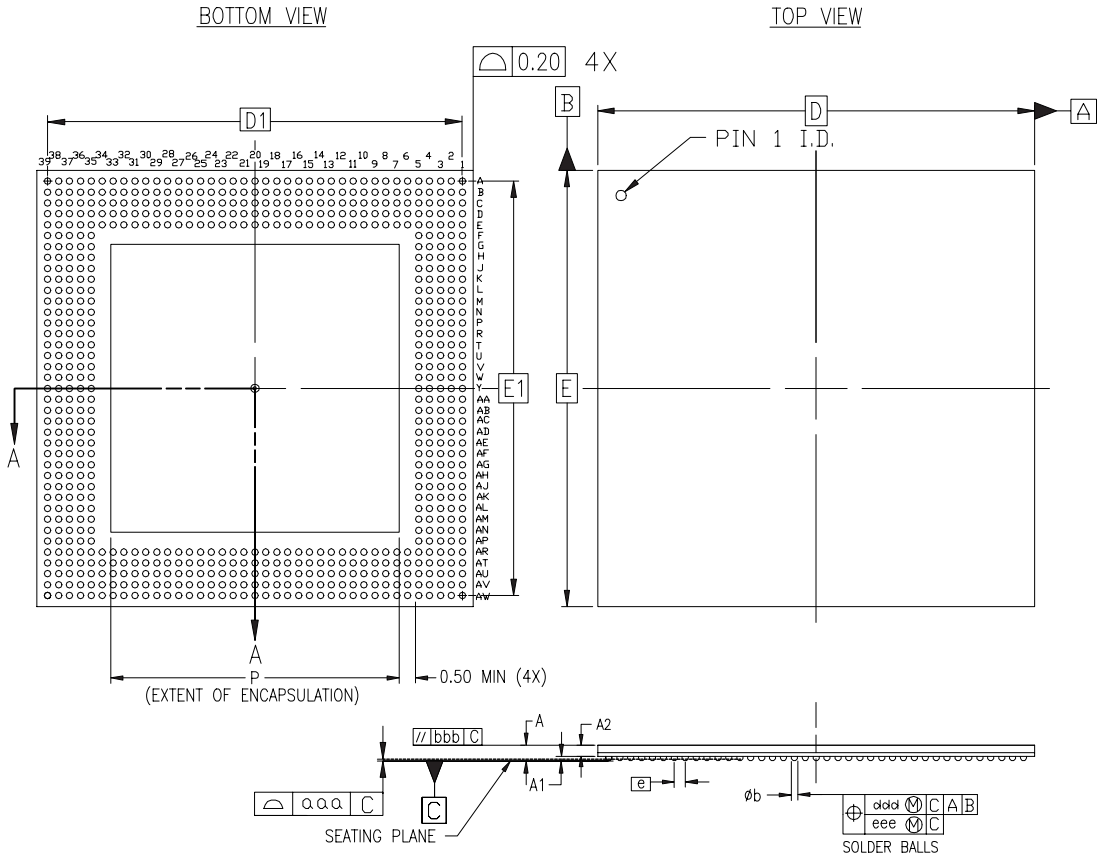
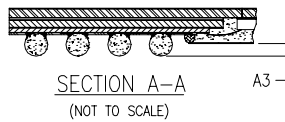


Ball Fine Pitch Packages - FG680



SYMBOL	MILLIMETERS			NOTE
	MIN.	NOM.	MAX.	
A	$\sim$	1.60	1.90	3
A <sub>1</sub>	0.40	0.50	0.60	
A <sub>2</sub>	$\sim$	$\sim$	1.00	
A <sub>3</sub>	0.20	$\sim$	$\sim$	
D/E	40.00 BASIC			
D <sub>1</sub> /E <sub>1</sub>	38.00 REF			
e	1.00 BASIC			
øb	0.50	0.60	0.70	
aaa	$\sim$	$\sim$	0.20	
bbb	$\sim$	$\sim$	0.25	
ddd	$\sim$	$\sim$	0.25	
eee	$\sim$	$\sim$	0.10	
M		39		



NOTES:

1. ALL DIMENSIONING AND TOLERANCING CONFORM TO ASME Y14.5M-1994
2. SYMBOL "M" IS THE PIN MATRIX SIZE.
3. CONFORMS TO JEDEC MO-192-AAU-1 (DEPOPULATED) EXCEPT FOR PACKAGE THICKNESS.

680-BALL FINE PITCH BGA (FG680)