

Multimedia Networks: Strategic Outlook

Klaus Buechner
Group Vice President
Multimedia Networks



Agenda

- **The changing environment**
- **The Magellan mission**
- **Our challenges and solutions**
- **Looking forward**

The Changing Environment



Technology evolution. Business revolution

Our Response

- **Changing the way we do business**
- **Partnering with leading industry vendors**
- **Offering solutions that enable growth**
- **Maintaining our technical strategy**
- **Focusing on our mission**



The Magellan Mission

We will focus on our expertise in networks—designing, building and integrating mission-critical, multimedia communication networks for business enterprises and service providers around the world.

Challenges and Opportunities

- **Enterprise**
 - reduce network operational costs
 - expand reach of the network
 - evolve the network
- **Service provider**
 - be poised for competition
 - deliver new services fast
 - deliver leading edge services

Increase revenue opportunities and reduce costs

Challenge: Reduce Networking Costs



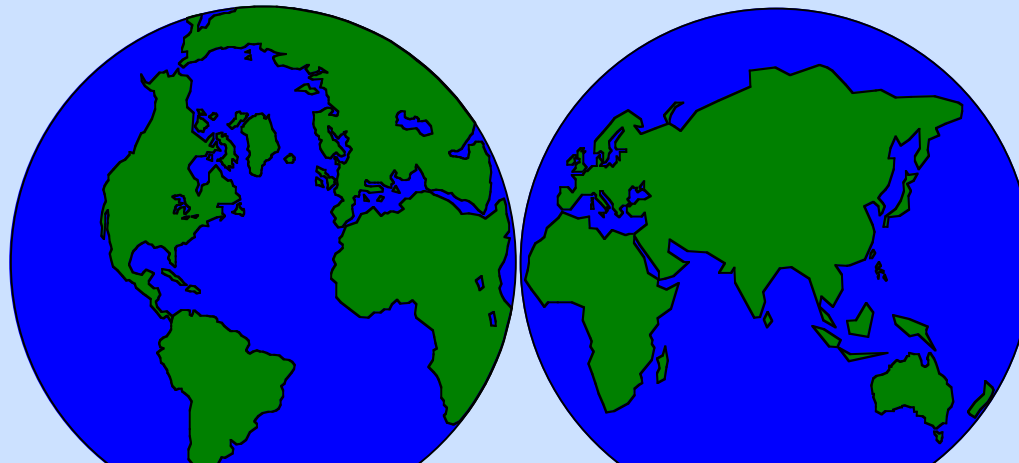
Dresdner
Bank

- **Critical success factors:**
 - streamline branch operations
 - high network availability
 - network evolution
- **Magellan's approach:**
 - consolidation of data traffic
 - access devices in branches
- **Impact:**
 - CIBC - over \$1M per month savings
 - Dresdner - common global services

Cost-effective Data Services

- **Leadership in '96**

- expanding service offering and extending reach
- enhancing networking capabilities to reduce costs
- platform enhancements to increase performance
- platform enhancements to reduce costs



Offering world-class data networking

Challenge: Expand Network Reach

- **Critical success factors:**
 - leverage technology to grow business
- **Magellan's approach:**
 - 1500 DPN-100/1s deployed in branches
 - broadband consultancy project
 - “la Caixa”/Telefónica hybrid network
- **Impact:**

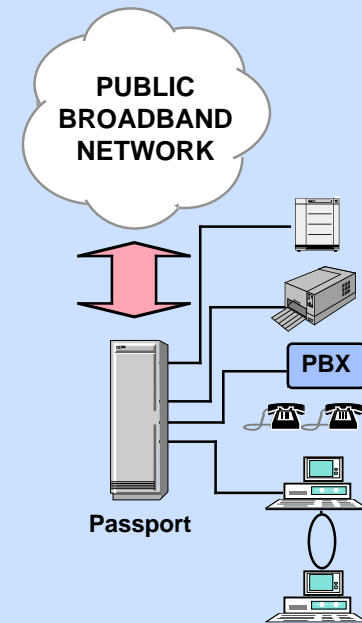


- expanded market opportunity - full services
- consolidated traffic and reduced costs



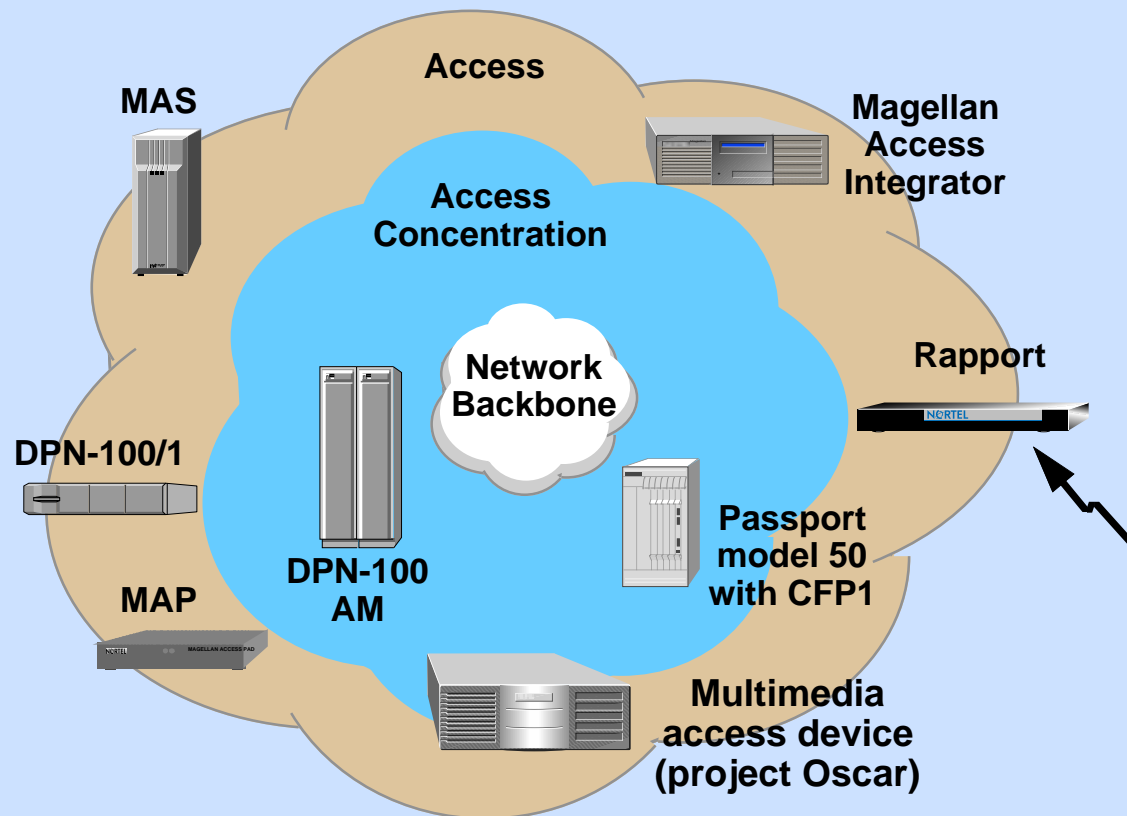
Telefónica
Transmisión
de Datos

- competitive hybrid service offering



Expand Network Reach: Multimedia

- **Leadership in '96**
 - focusing access business
 - developing a range of multimedia access products
 - partnering with industry leaders



Challenge: Evolving Your Network



SBB CFF FFS

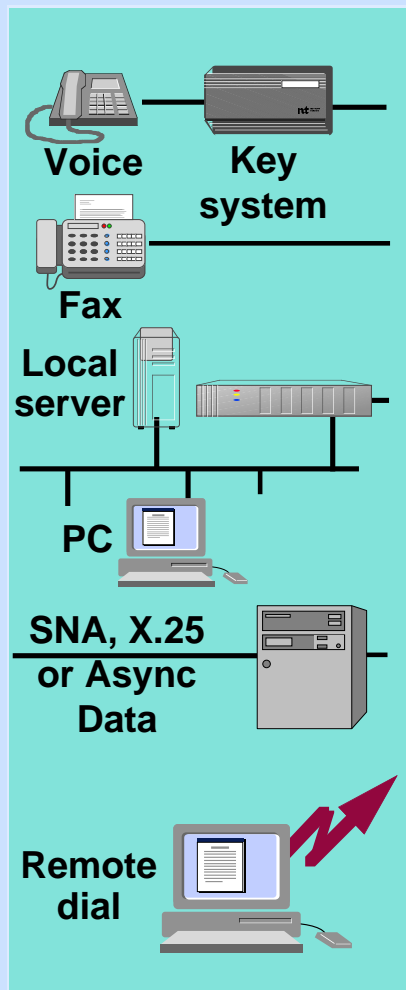


YPF



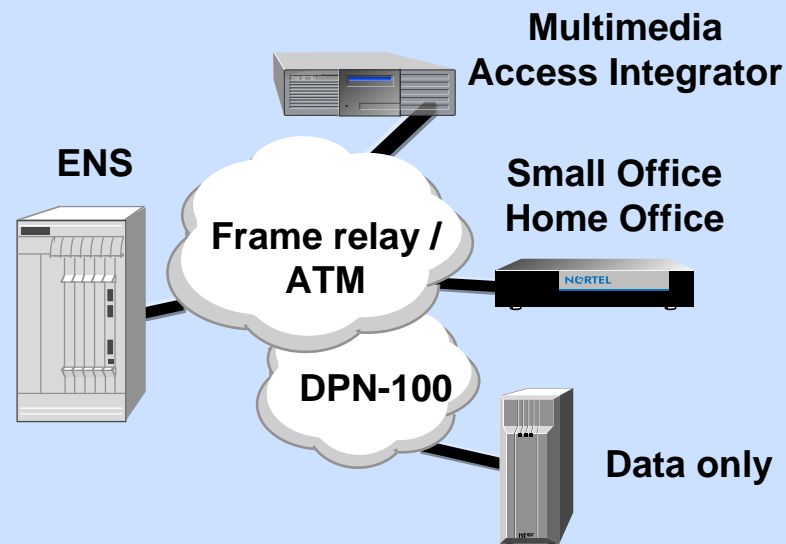
- **Critical success factors:**
 - efficient use of bandwidth
 - multimedia service offerings
 - smooth network evolution
- **Magellan's approach:**
 - network traffic consolidation
 - application independence
 - accessible technical expertise
- **Impact:**
 - competitively positioned
 - reduced networking costs
 - network evolution plan

Evolving your Network



Leadership in '96

- ATM enterprise network switch
- Flexible connectivity
- Complete network management
- Application-ready ATM



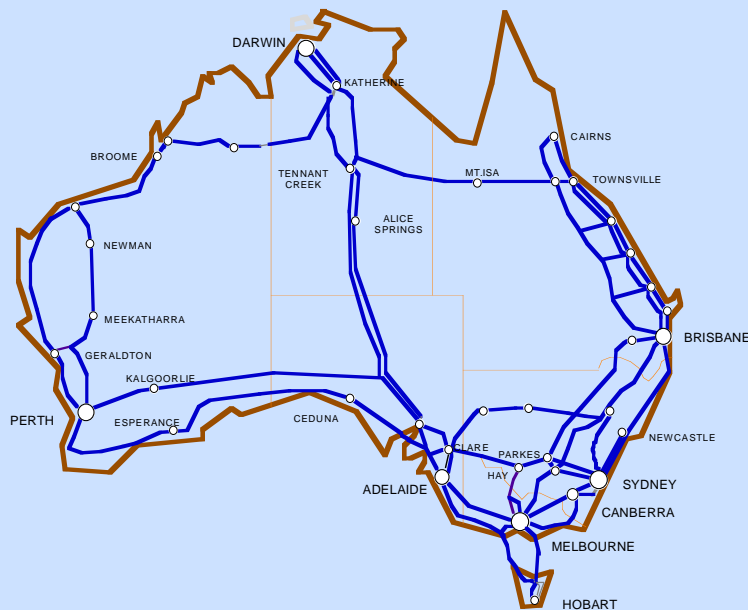
Best-in-class enterprise networking

Challenges and Opportunities

- **Enterprise**
 - reduce network operational costs
 - expand reach of the network
 - evolve the network
- **Service provider**
 - be poised for competition
 - deliver new services fast
 - deliver leading edge services

Increase revenue opportunities and reduce costs

Challenge: Poised for Competition

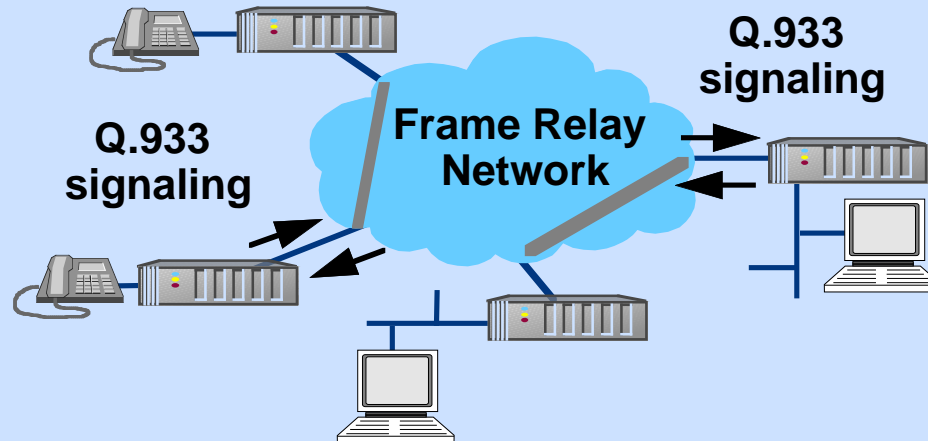


- **Critical success factors:**
 - infrastructure for multiple services
 - reduce cost and risk
 - offer new services
 - extend the reach of service offerings
 - increase speed and capacity
- **Magellan approach:**
 - 4500 DPN-100 modules
 - Passport frame relay and ATM
 - single data-platform strategy
- **Impact:**
 - 100% customer satisfaction
 - fast delivery of new services
 - ready to face greater competition

Poised for Competition

**INDUSTRY
FIRST**
Frame relay SVCs
Egress accounting
DS3 access

- **Leadership in '96 - Magellan frame relay**
 - new revenue and application opportunities
 - addressing cost of ownership
 - smooth transition to new technology
 - operational and availability improvements
 - market introduction and development assistance



Evolving to meet next generation requirements

Challenge: Fast Delivery of New Service



MFS Communications Company

- **Critical success factors:**
 - expand wide area services
 - optimize use of existing network
- **Magellan's approach:**
 - VBR voice over Magellan Passport
 - introduction of concept trials
- **Impact:**
 - higher utilization of MFS backbone
 - differentiated voice service (WAVE)
 - cost-effective use of network resources



Challenge: Expanding Markets

- **Critical success factors:**

- delivery of seamless VPN services
- cost optimization
- facilitate introduction of new services



- **Magellan's approach:**

- Passport - scalable multimedia platform
- ability to differentiate services
- Unisource/Nortel partnership



The Netherlands



Sweden



Spain



Switzerland

- **Impact:**

- '95 customer satisfaction 92%
- over 40,000 VPN ports and 2,500 POPs in Europe
- increased competitiveness and enhanced service portfolio

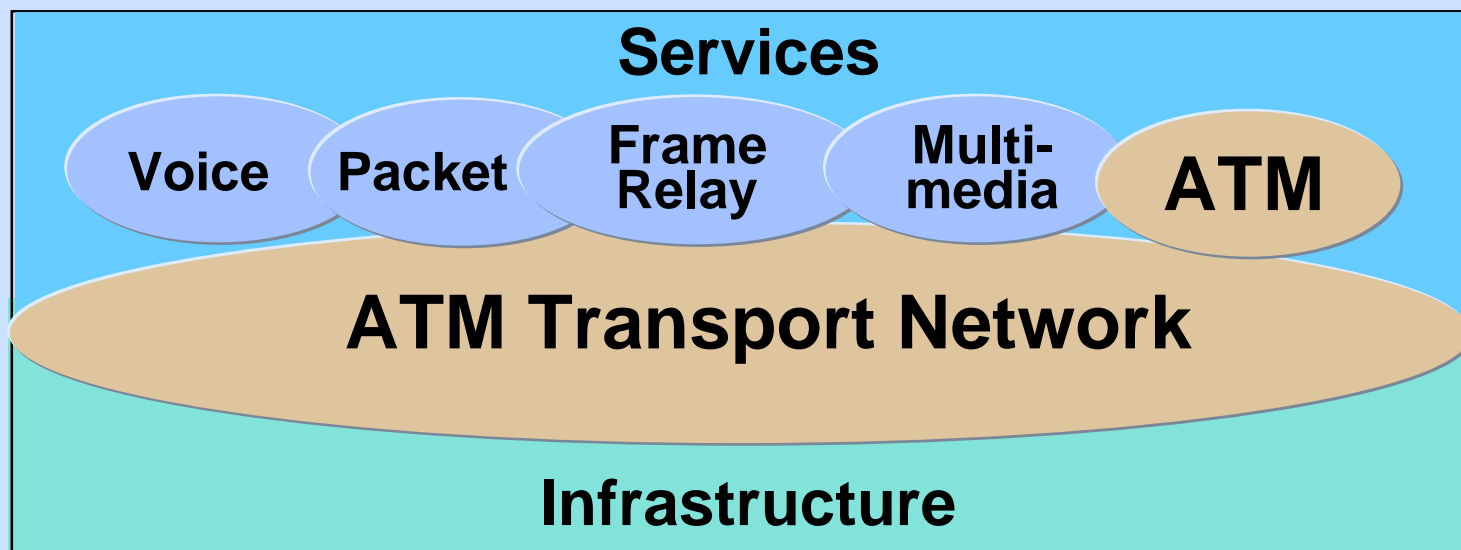
Delivery of New Services

Leadership in '96

- **Involvement in design and development**
- **Standards-based solutions**
- **Rapid deployment capability**
- **Consulting expertise**

Challenge: Delivering Leading Edge Services

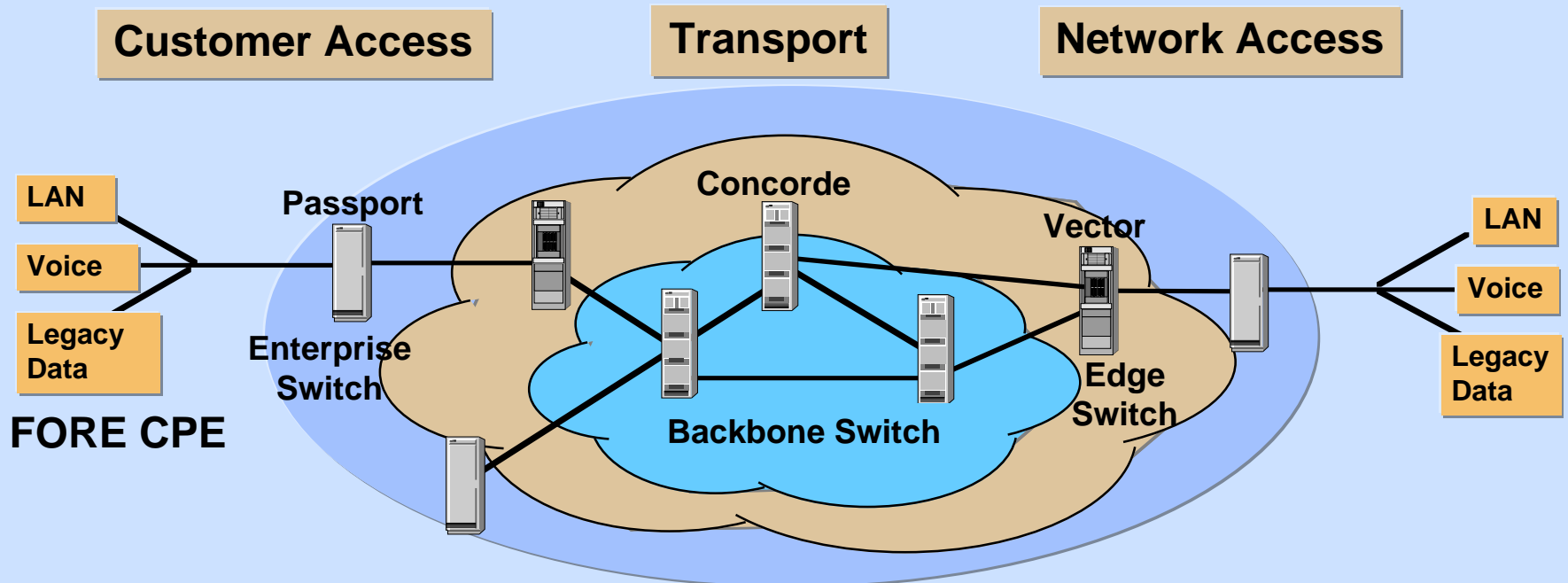
- Technology firsts - the competitive edge
- Expanding ATM service portfolio
- Application-ready architecture
- Scalability and robustness
- Sophisticated end-to-end management



A service-independent infrastructure

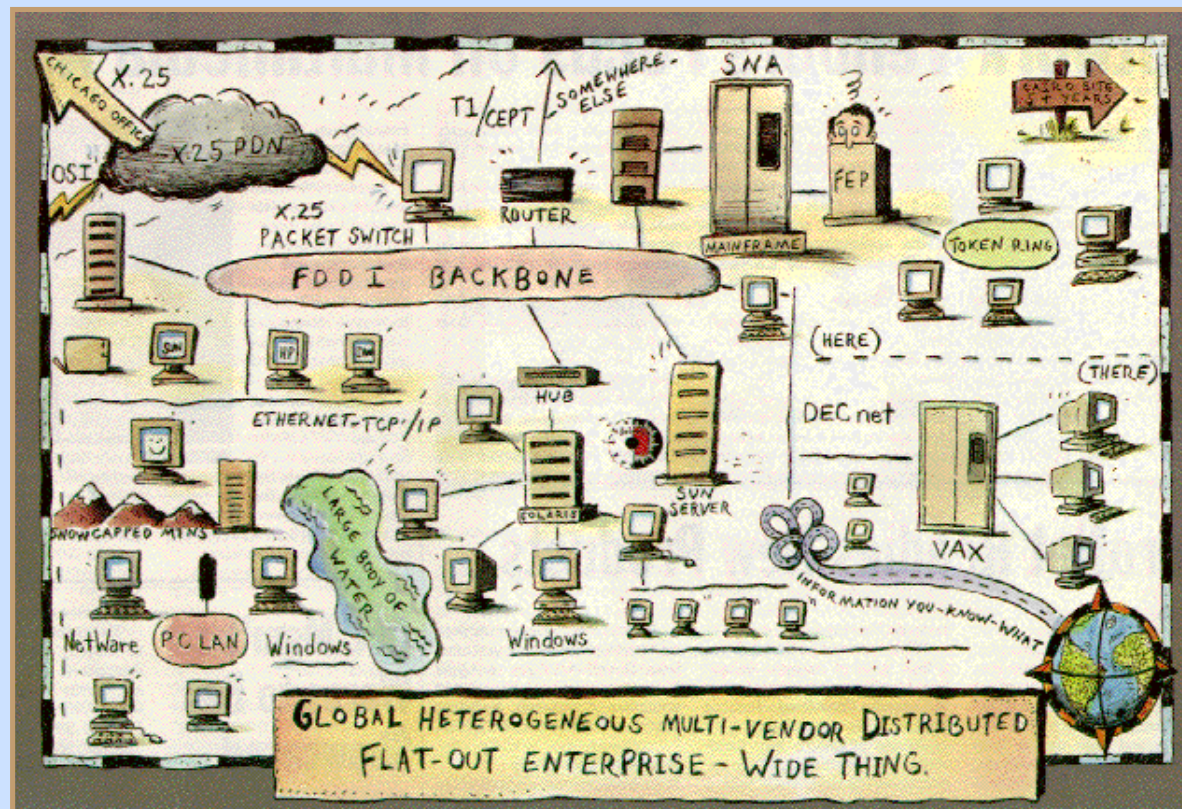
Delivering Leading Edge Services

- **Leadership in '96 - ATM**
 - leading market with new functionality and services
 - sophisticated network/service/traffic management
 - high service availability via full redundancy
 - extensive accounting, billing & reporting capability

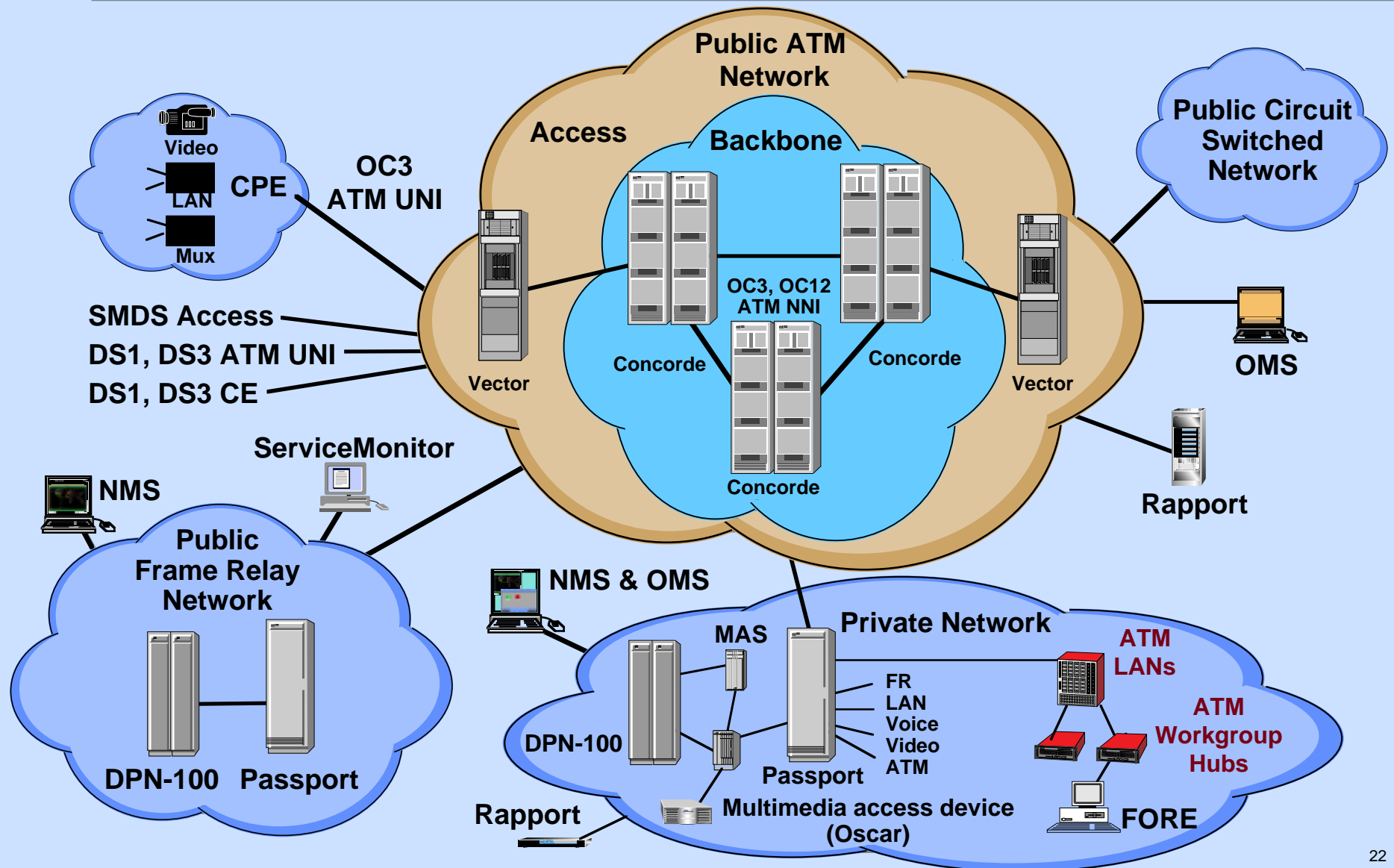


The Future Network

- An Enterprise Network is....
“The sum of applications, services and equipment required to meet an organization’s communication needs (voice, data, video and image).”
Or....



The Future Network



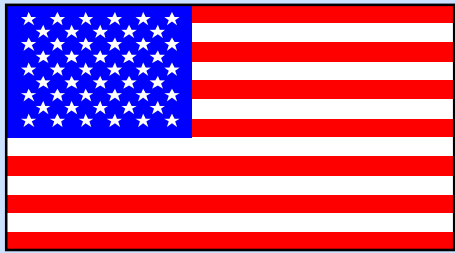
Your Success is our Success

Benxi PTA
Banco di Napoli
Ashland Oil
Taiwan National Stock Exchange
Institute
Ministry of the Interior
TELESP
Chung-Lien
First Commercial Bank
Argonne
Chengdu City PTA
Jinzhou PTA
Nanchang City PTA
Caja Postal
Ibercaja Spain
Dow Jones
Stolichny Bank
Unisource (SIRUS)
Sprint
INES
Hoechst Japan
Kayaba Kogyo
TR Labs
GST
Advanced Internet
Communications
Williams Company
Hart Communications

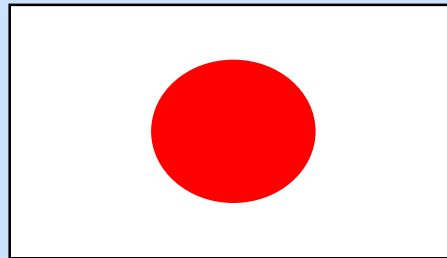
Source River Telecommunications
Societe InterBancia Servicios
ACER Peripheral Inc.
Anshan City
Jiangxi PTA
Ningxia PTA
Teleceara
MFS Datanet Inc.
ACC
Blue Cross Blue Shield
Changcun City PTA
Qinghai PTA
Tianjin PTA
RICIB (Gouvernement du Québec)
Telekomunikacja Polska S.A.
Boston Business Network
Bellcore Technology
Ministry of Defence - Spain
SRT Communications
Telekom Malaysia
NewTel
Akzo Nobel
Westinghouse Communications
Vyvx
Spectranet - City of Lakeland
CSIS
TYSSA
Dalian City

PCS PrimeCo
YKKap
INTEL, Panama
TELECOM de Colombia
Unicom
ENICOM (Nippon Steel)
Okazaki City
Sanyo Electric
Teleway Japan
Weifang City
Telefonica del Peru
Telesur
Bell Canada - Highway 407 / MOT
Cabletron Systems
Bear Stearns
Tri Touch America
EMTELCO
CTC
Banco de Sardegna
1st Bancario S. Paulo di Torino
Infostrada
CNI Opus
Mercury one-2-one PCS
Promon
Bassett Health Care
Georgia Pacific
AECL
Bell Canada - Residential Broadband

Market Leadership



+ 69%



+ 148%



+ 96%



+ 38%



+ 79%



+ 76%

1995 global revenue growth + 46%

Strategic Outlook



customer
first
best