

LAN Applications and Magellan Solutions

Robert Tomkins

Passport InterLAN Switching Product Manager

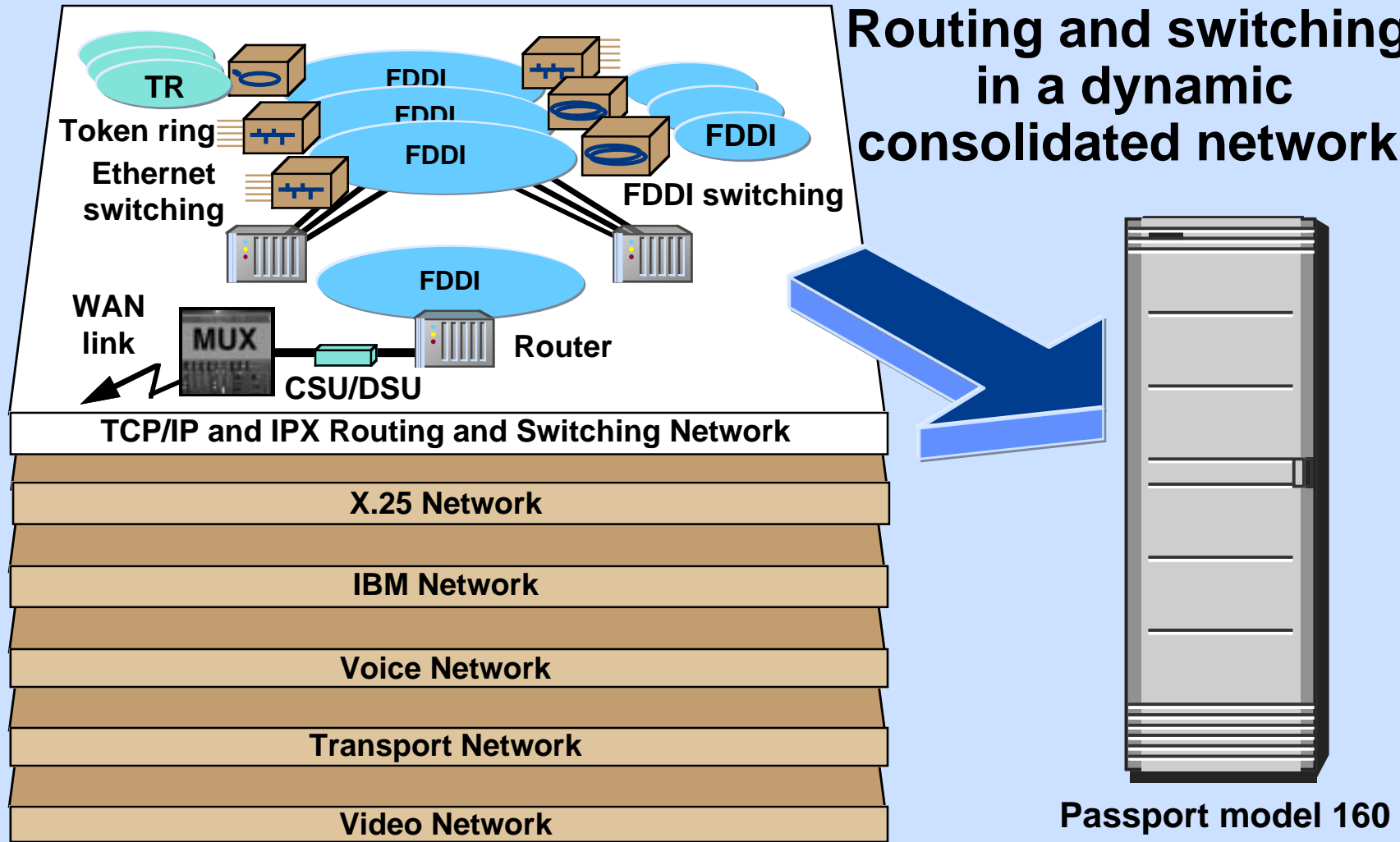
robert_tomkins@nt.com



Agenda

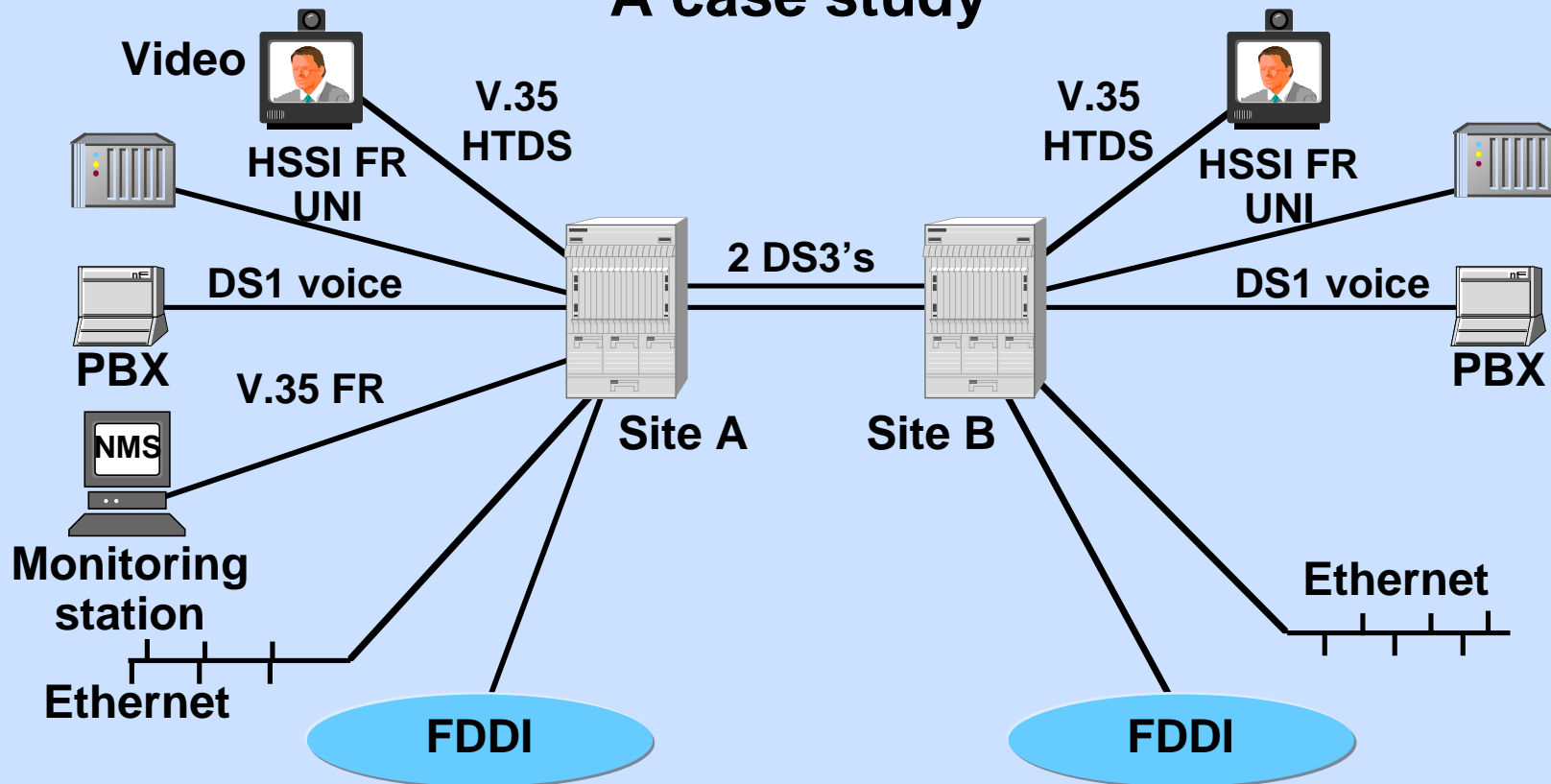
- **InterLAN applications**
 - network consolidation
 - collapsed backbones
 - routing
 - switching
 - security
 - redundancy
 - edge routing and backbone switching
 - ATM migration
- **Passport improves networks**

Network Consolidation



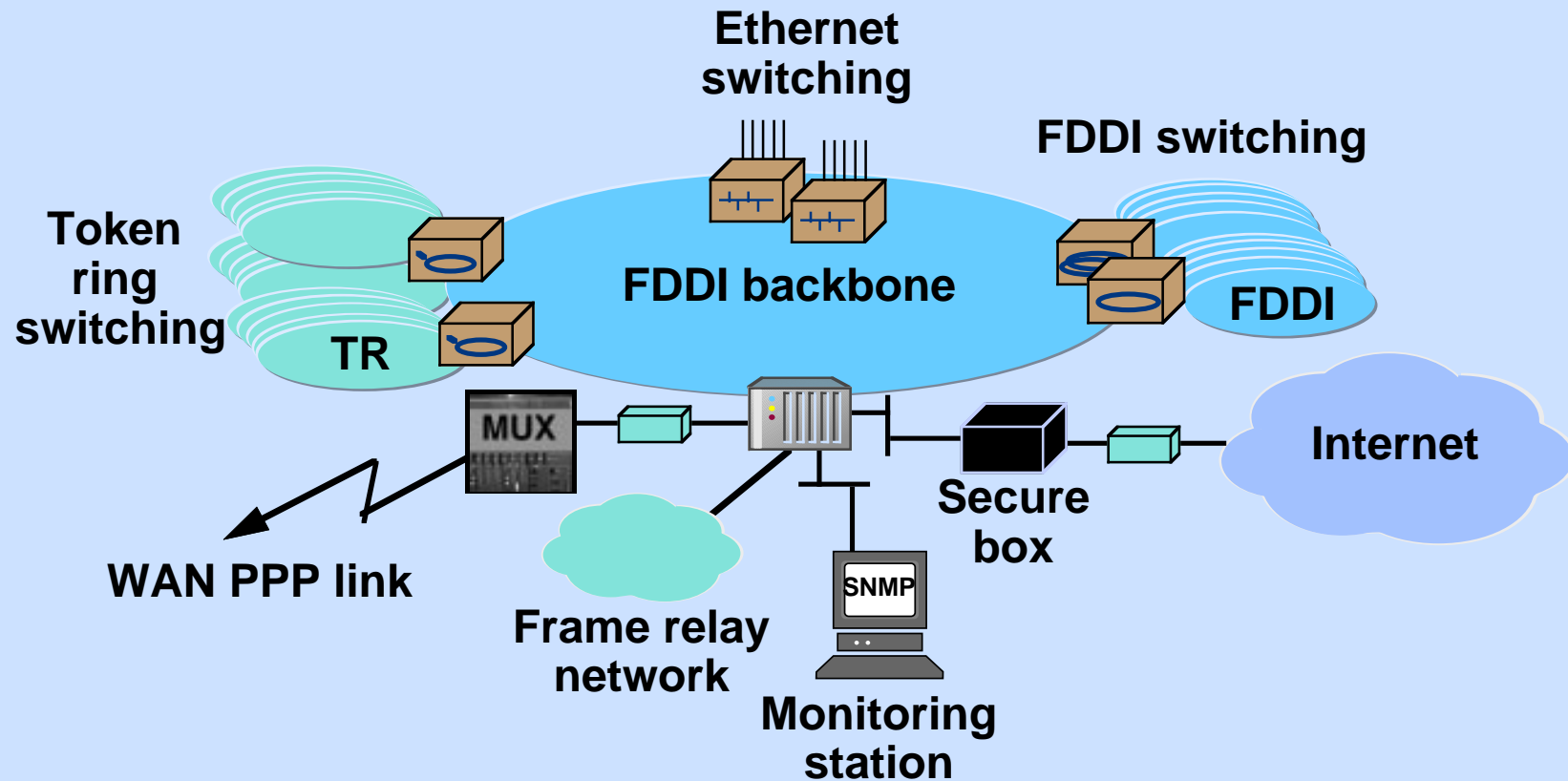
Applied Network Consolidation

A case study



Simplify and save

Complex Backbones

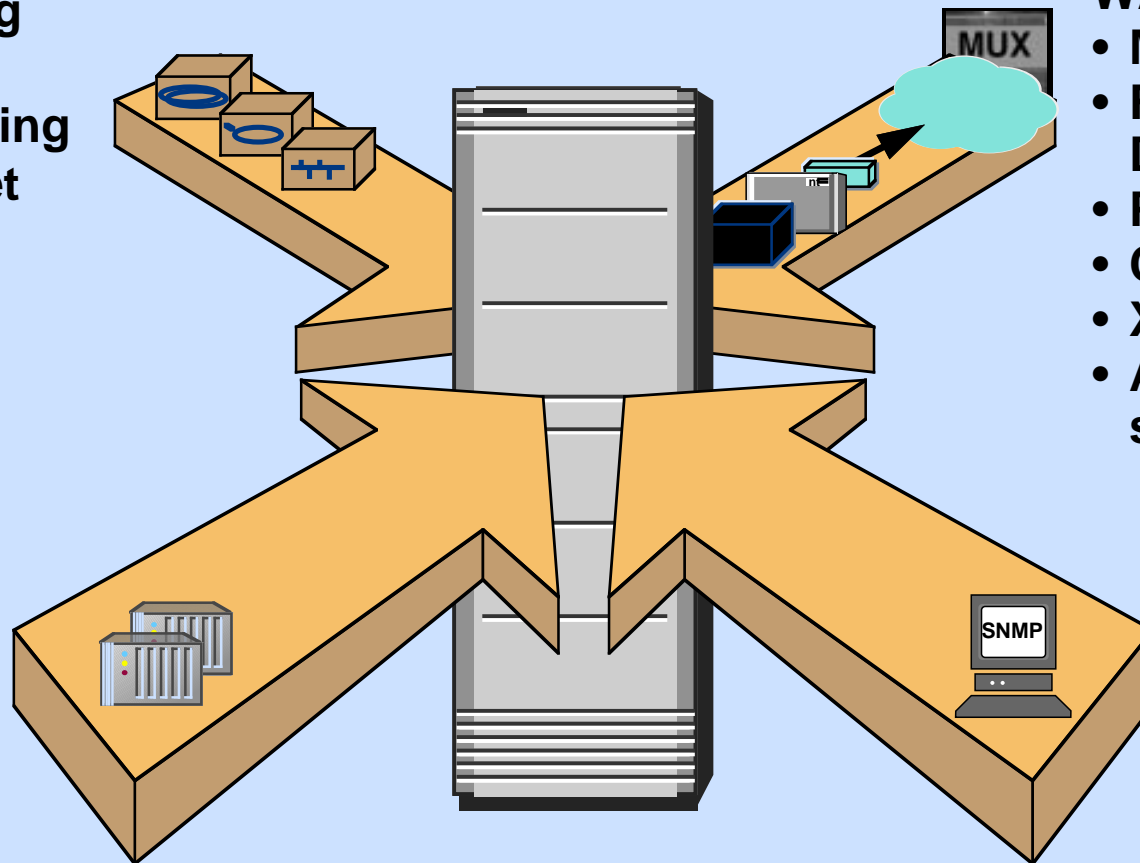


Multiprotocol, many device entities

Collapsed Backbones

Switching

- FDDI
- Token ring
- Ethernet



WAN

- MUX
- Frame relay DTE
- PPP
- CSU/DSU
- X.25 DTE
- Advanced security

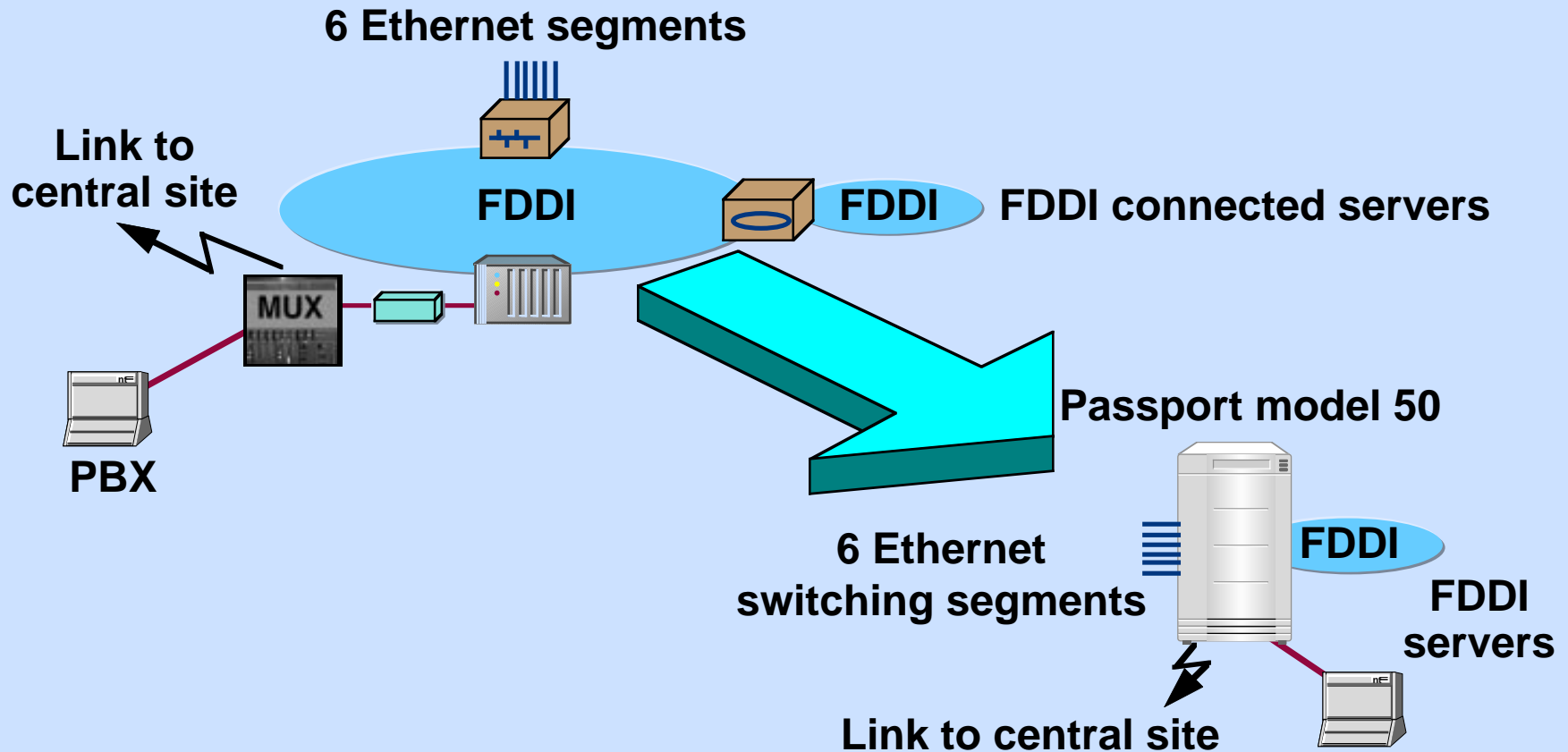
Routing

- IP
- IPX

- ## Network Management
- SNMP

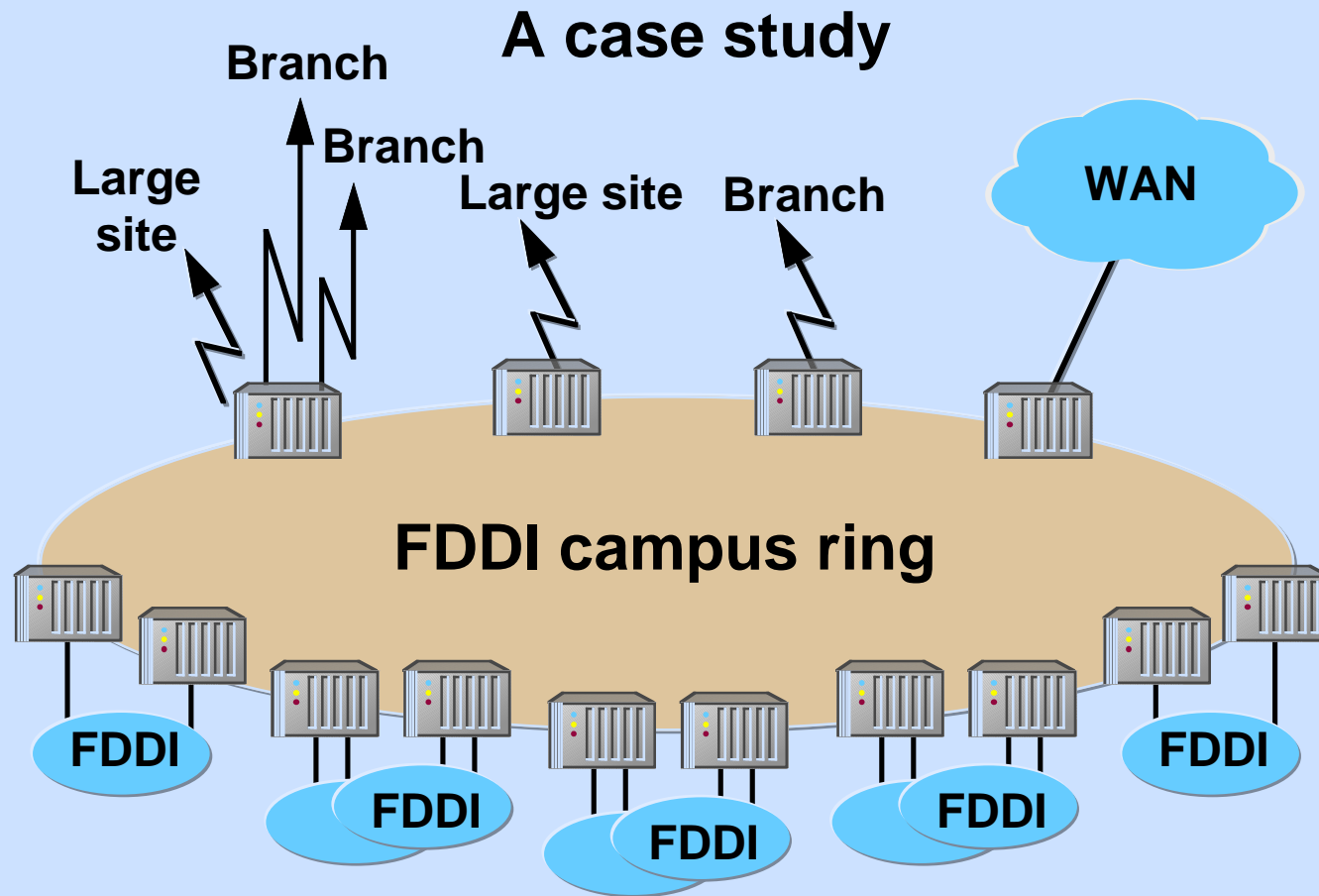
High-performance, cost-effective, and simple

Branch Collapsed Backbone



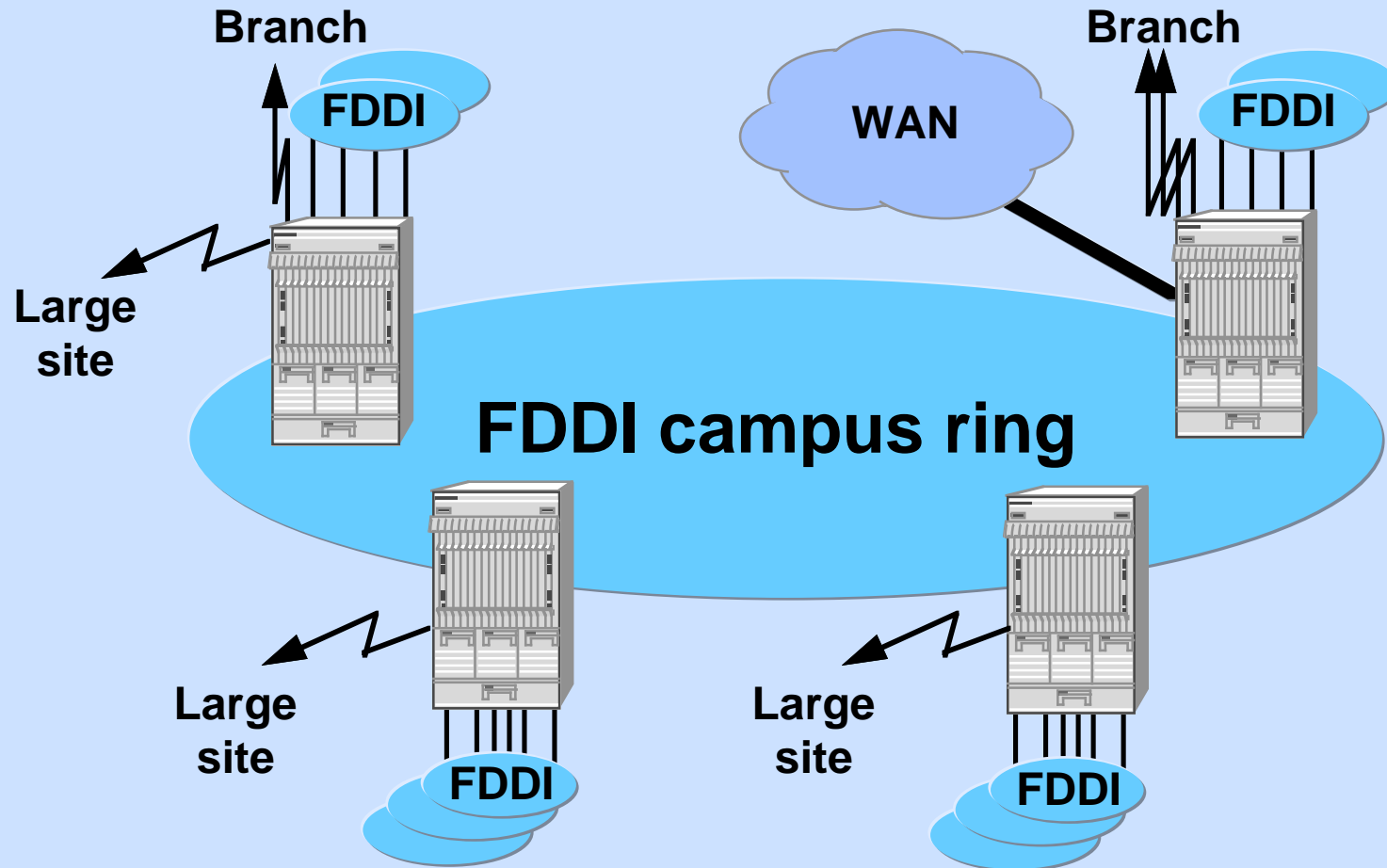
Simple, cost-effective, and easy to manage

Aged, Low Density Routers



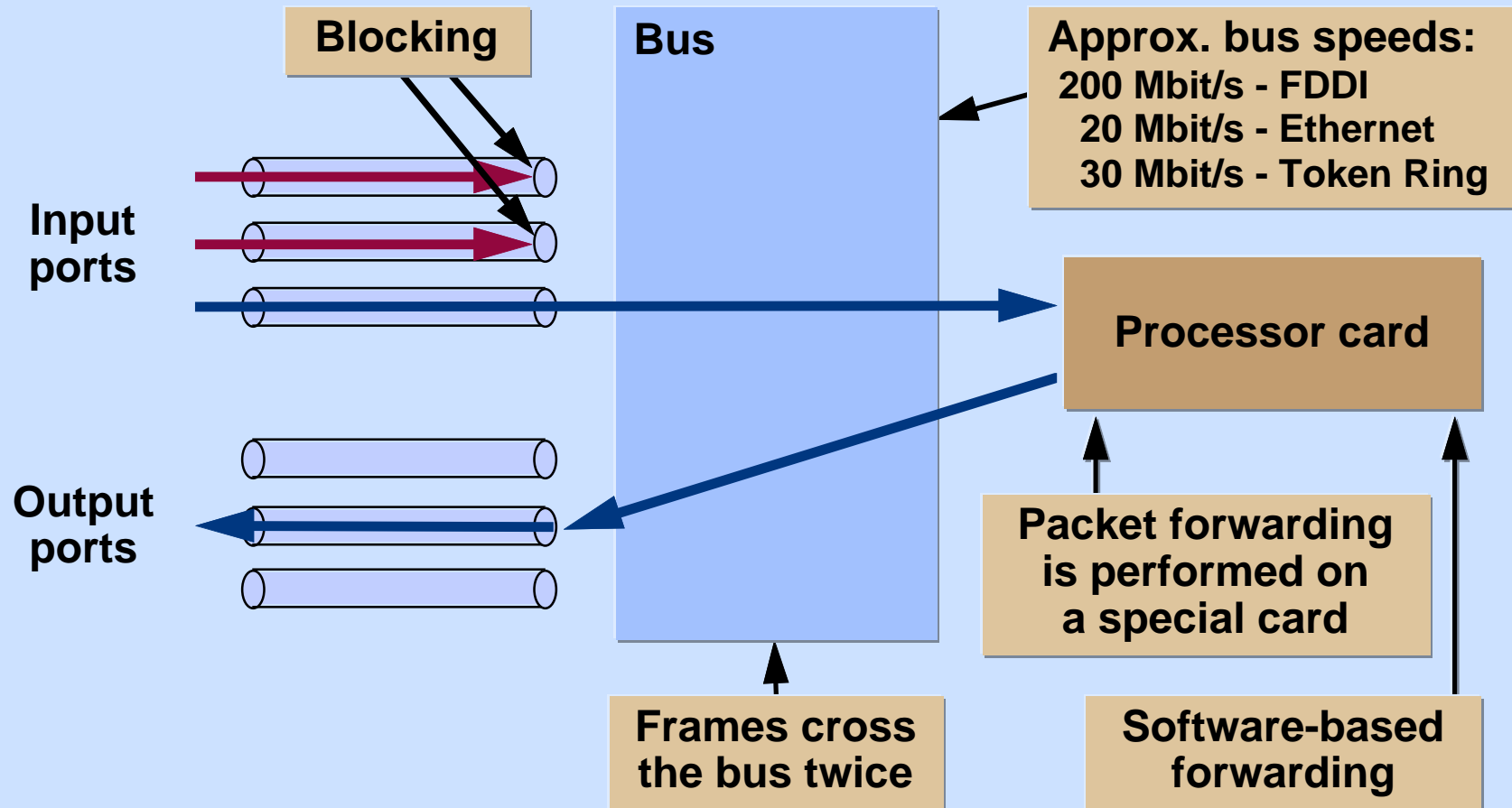
Legacy routers require frequent maintenance

High Density, Modern Routing



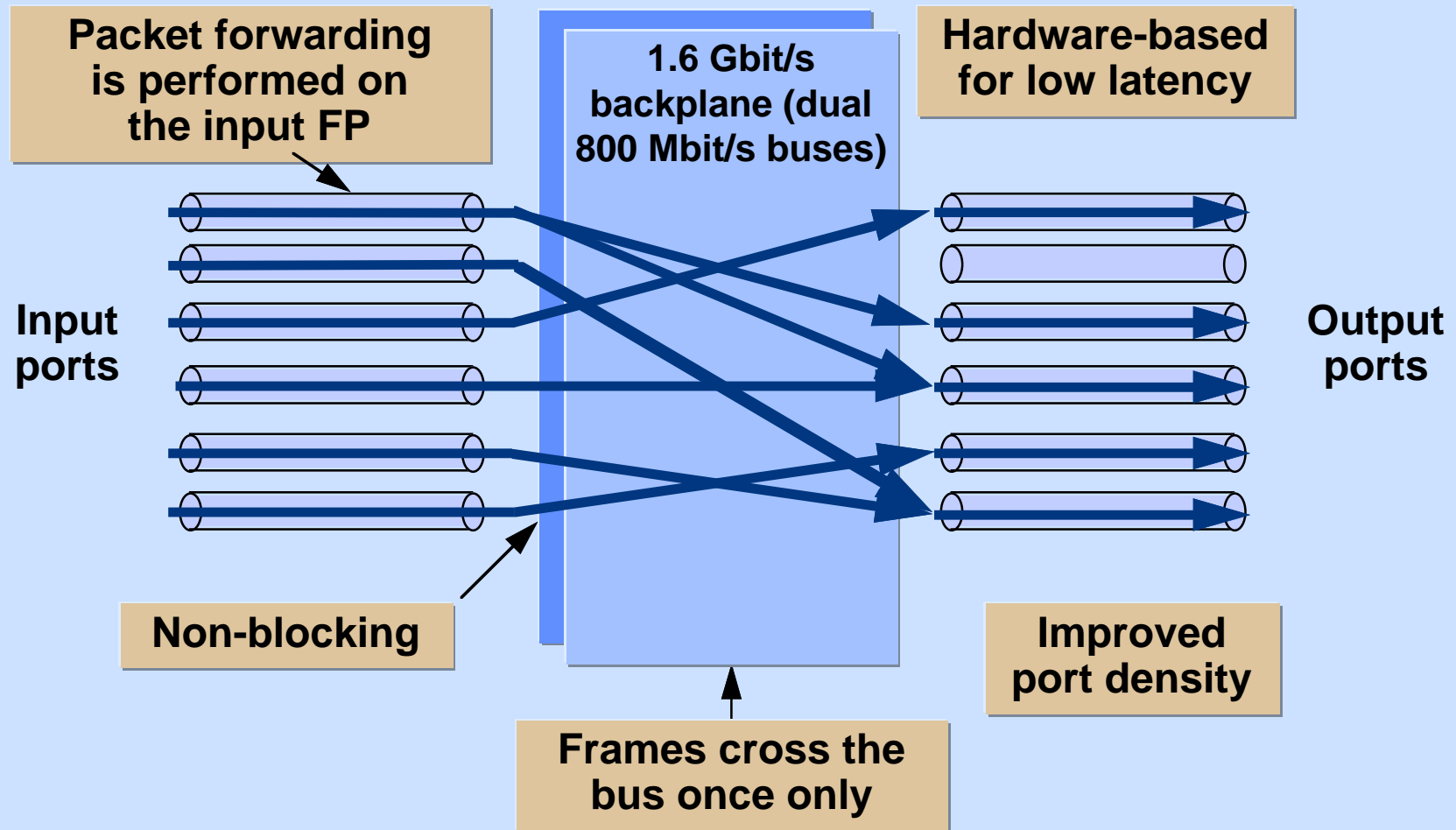
Consolidated, low maintenance routing

Bridges and Concentrators



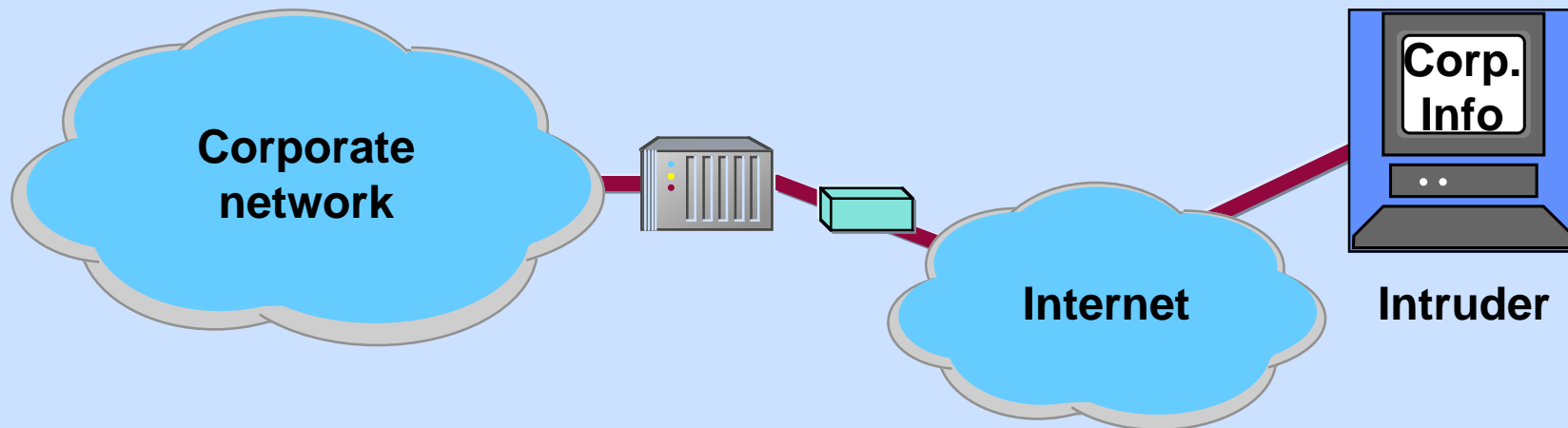
Bandwidth bottlenecks

Passport Switching



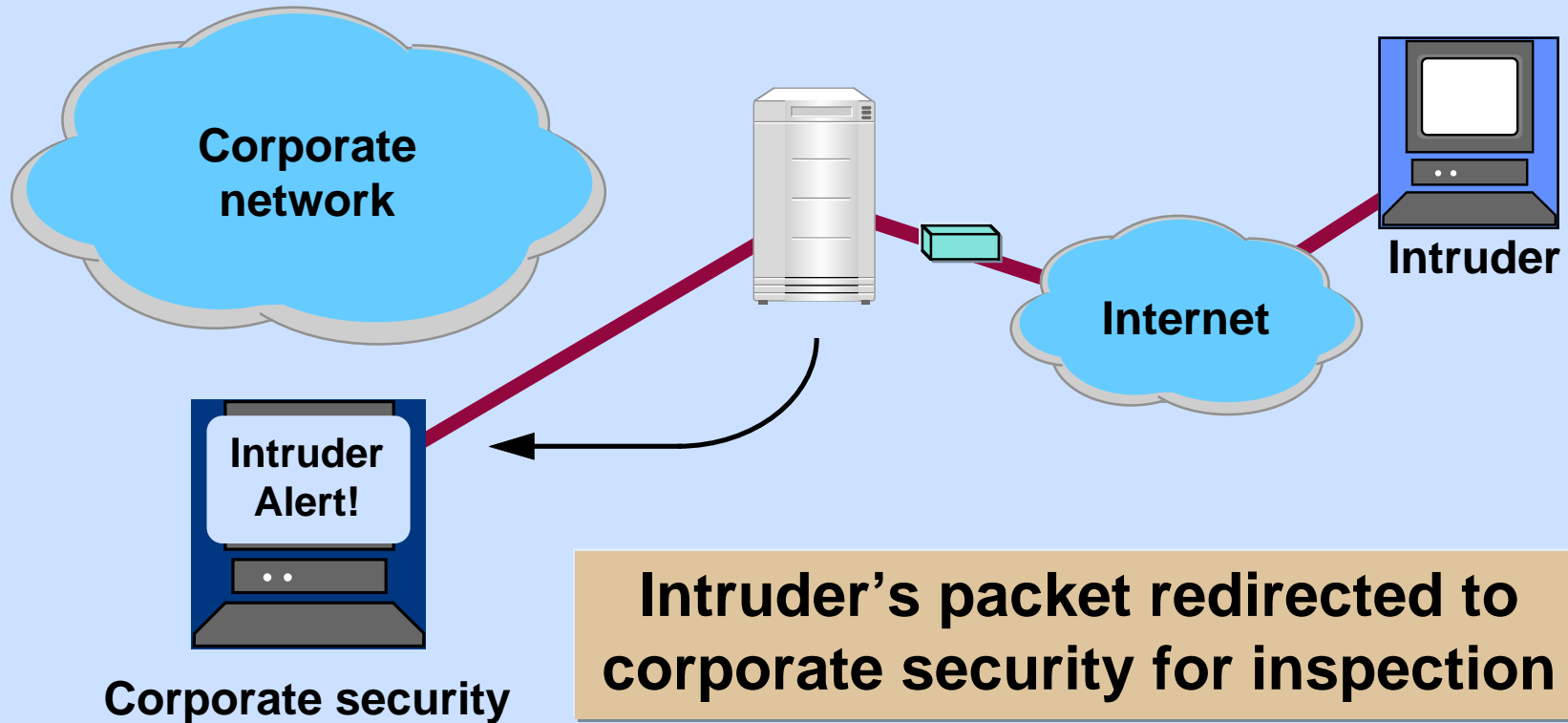
High throughput, efficient switching

Router Security



Simple filters don't make a network secure

Network Security



Advanced packet filtering and security

Redundancy



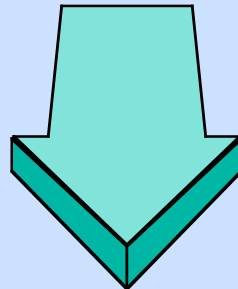
Router failure!



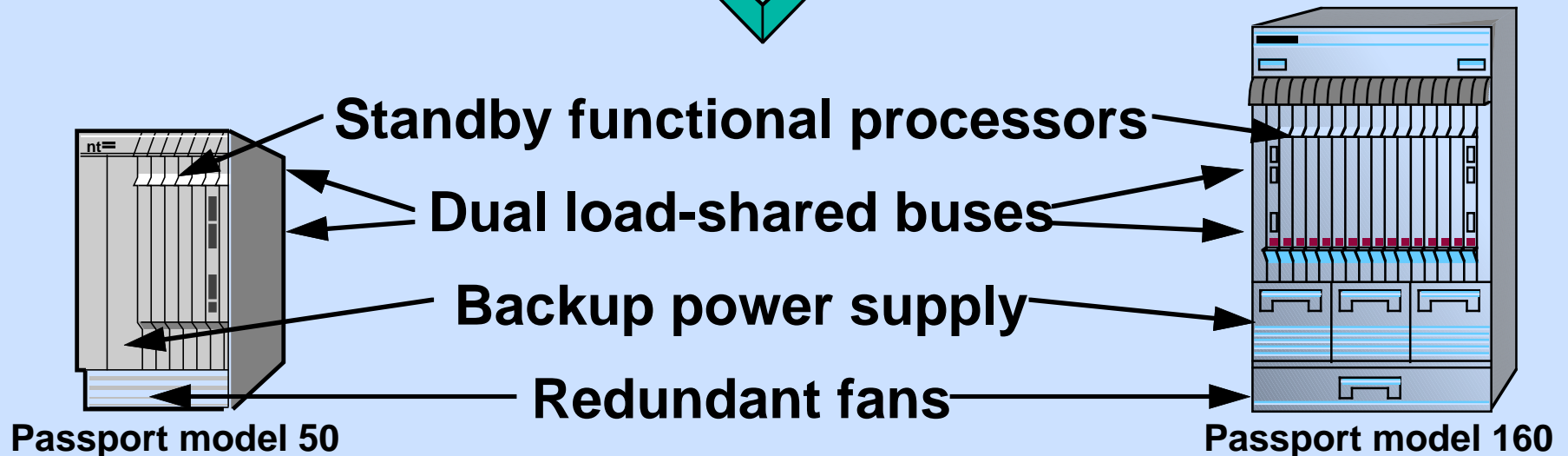
Token ring



Most routers have no redundancy...

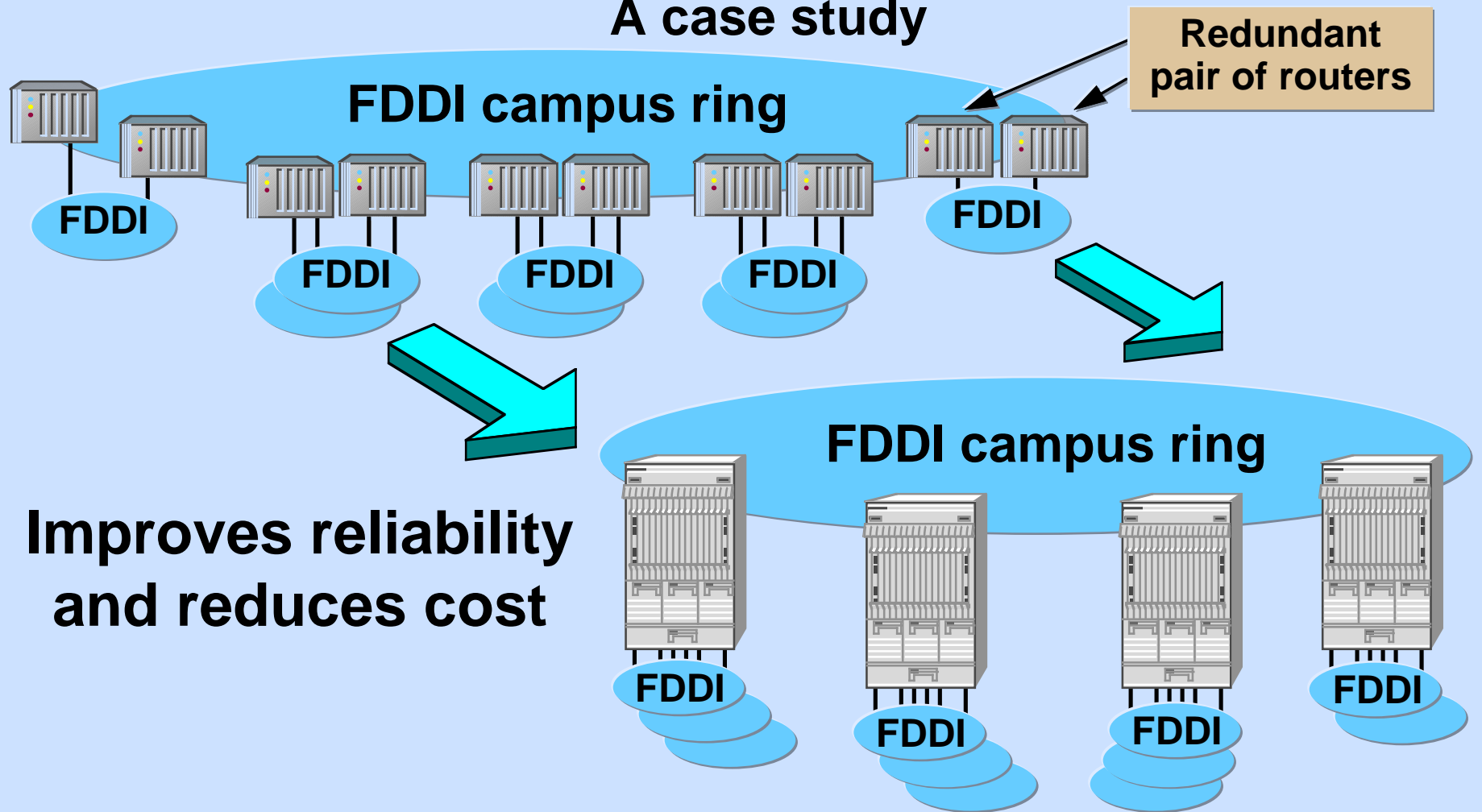


Passport is fully redundant

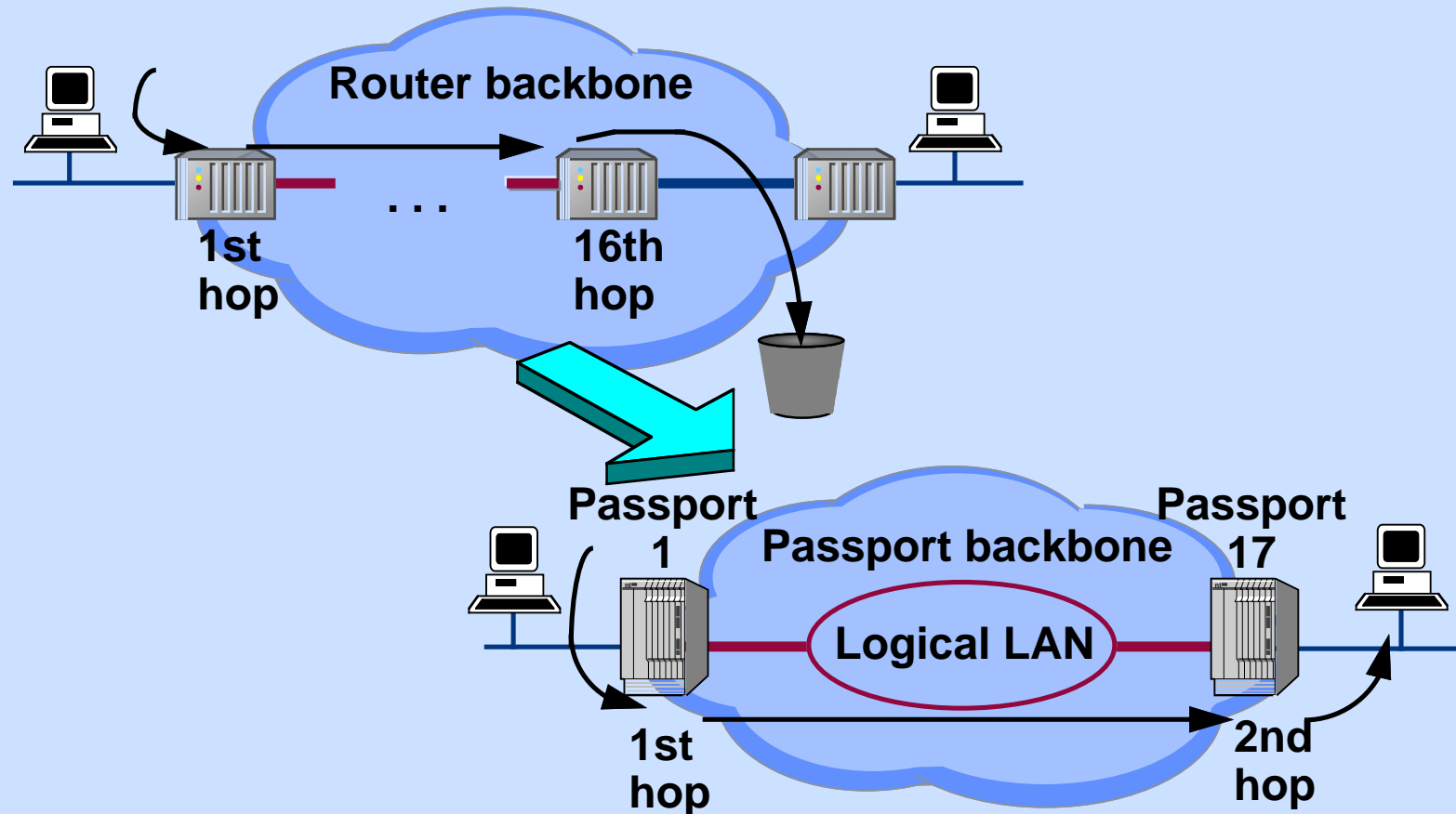


Port Redundancy

A case study

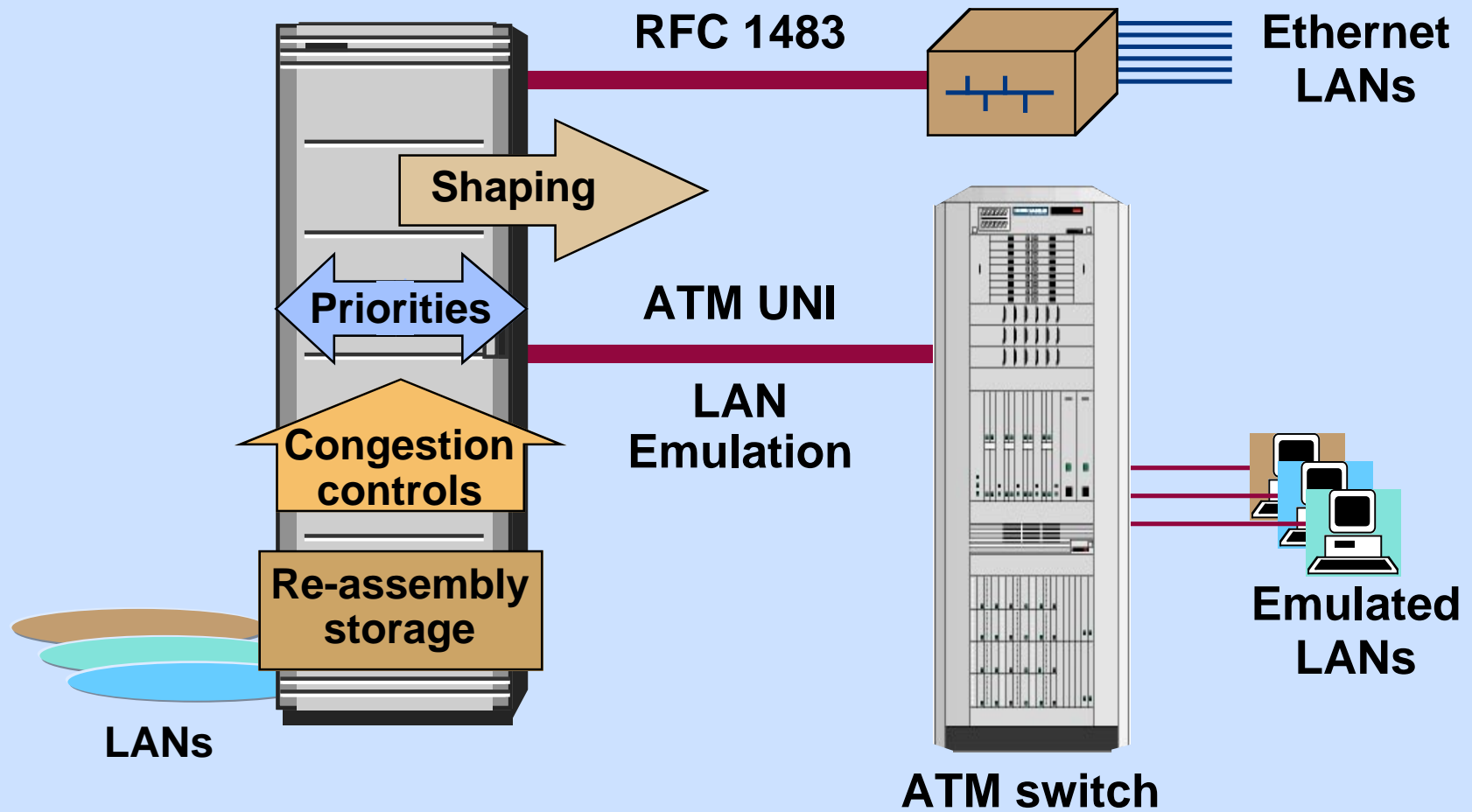


Edge Routing/Backbone Switching



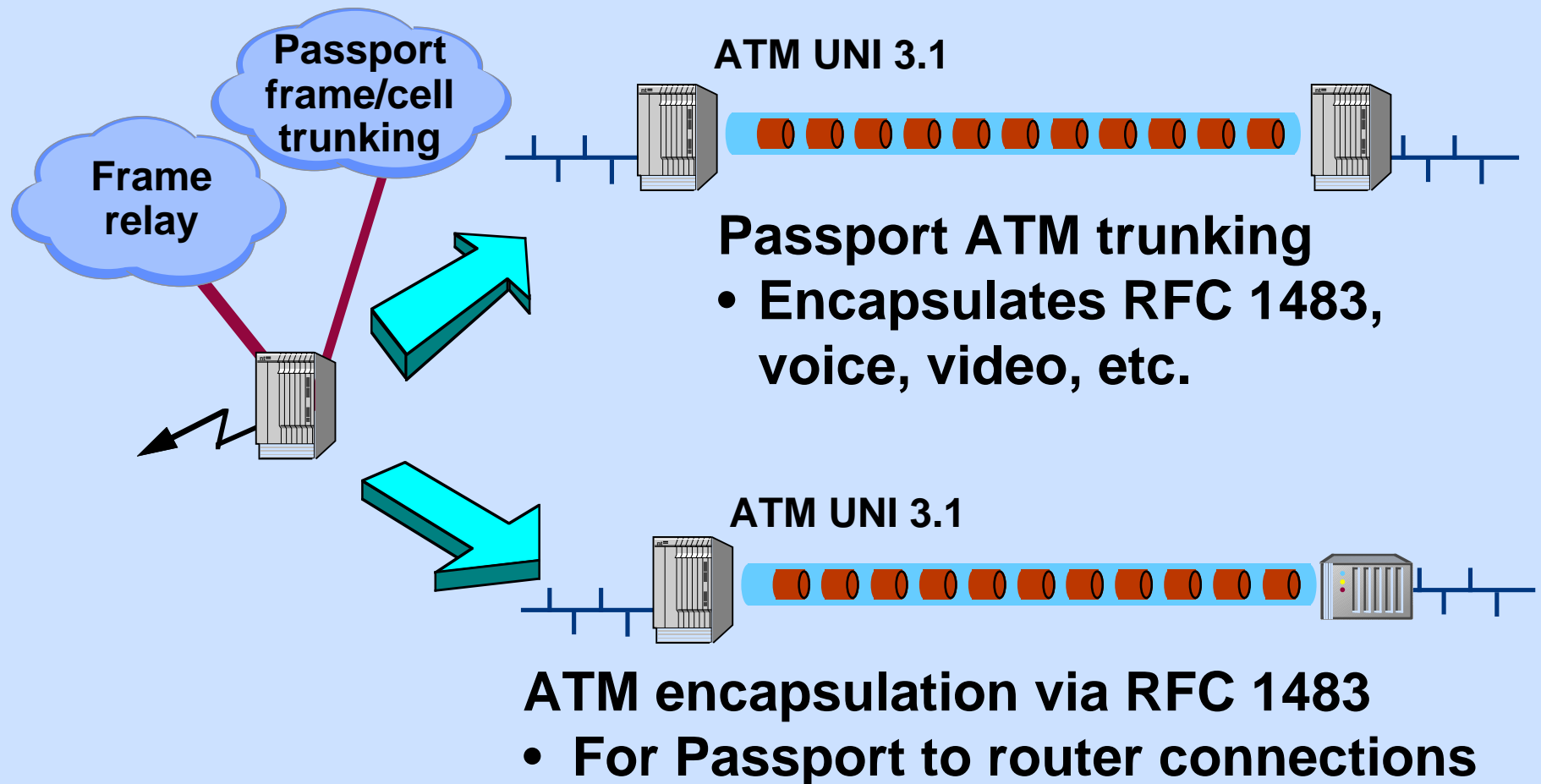
**Simplifies the logical topology
and reduces routing protocol hops**

LAN ATM Evolution



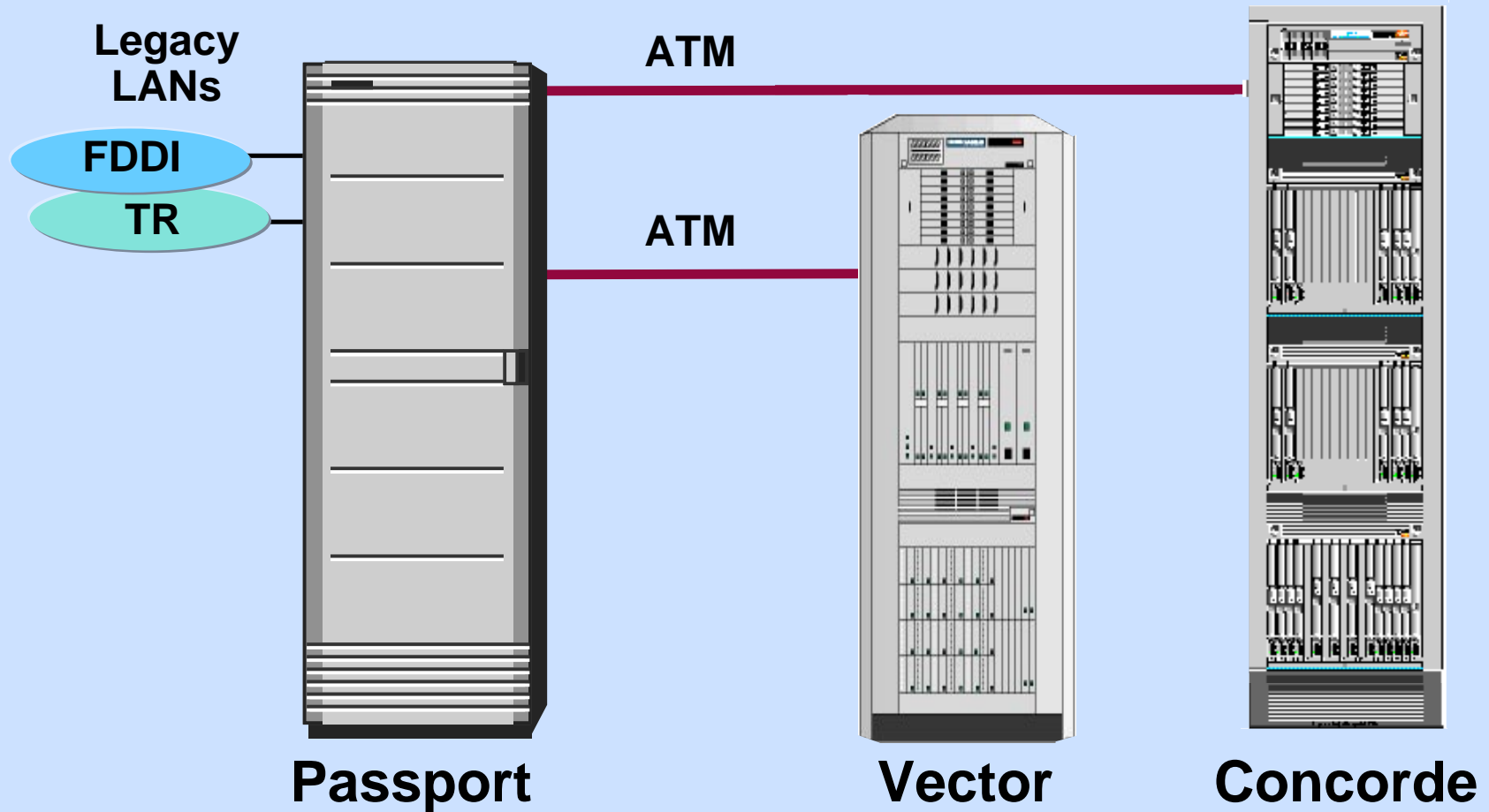
Standards-based ATM migration

WAN ATM Evolution



Smooth migration to WAN ATM

Full Magellan ATM Interoperability



Passport Improves Networks

- **Dynamic bandwidth consolidation**
- **Simplifying the network topology**
- **Reducing the number of network devices**
- **Increasing the network throughput performance**
- **Increase network reliability**
- **Advanced filtering and security**
- **Simplifying network management**
- **Easy, standards-based ATM migration**

Passport interLAN switching can be used to improve a wide variety of enterprise networks through fully-featured LAN internetworking