

Magellan Concorde Infrastructure Solutions

Quyen Bo

Network Engineer

Magellan Network Engineering

quyen.bo@nt.com



Agenda

- **The role of ATM in public networks**
- ATM network architecture
- Role of Magellan Concorde in backbone infrastructure solutions

The Role of ATM in Public Networks

ATM integrates :

- Different applications, technologies, and networks
- LAN-to-WAN networking
- Discrete protocols, services and equipment
- Voice, video, and data traffic at a variety of speeds

Critical success factors for WAN technology:

**Flexible
bandwidth**

**Flexible
connectivity**

**Multimedia
transparency**

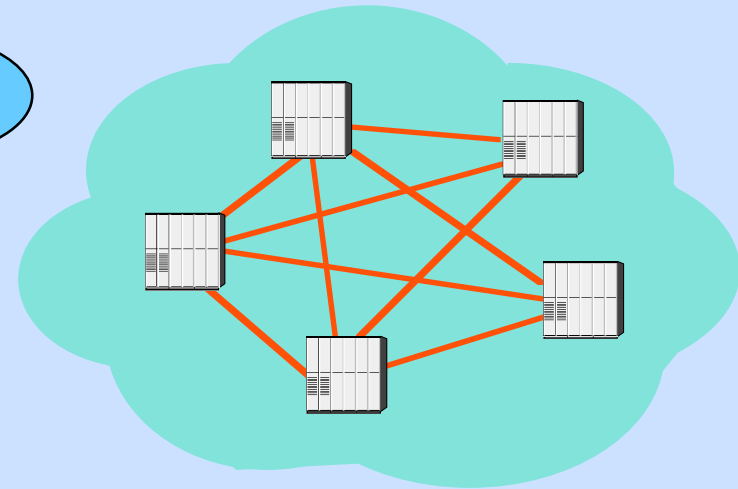
ATM Has Been Accepted

Residential broadband network trials

Data network trials

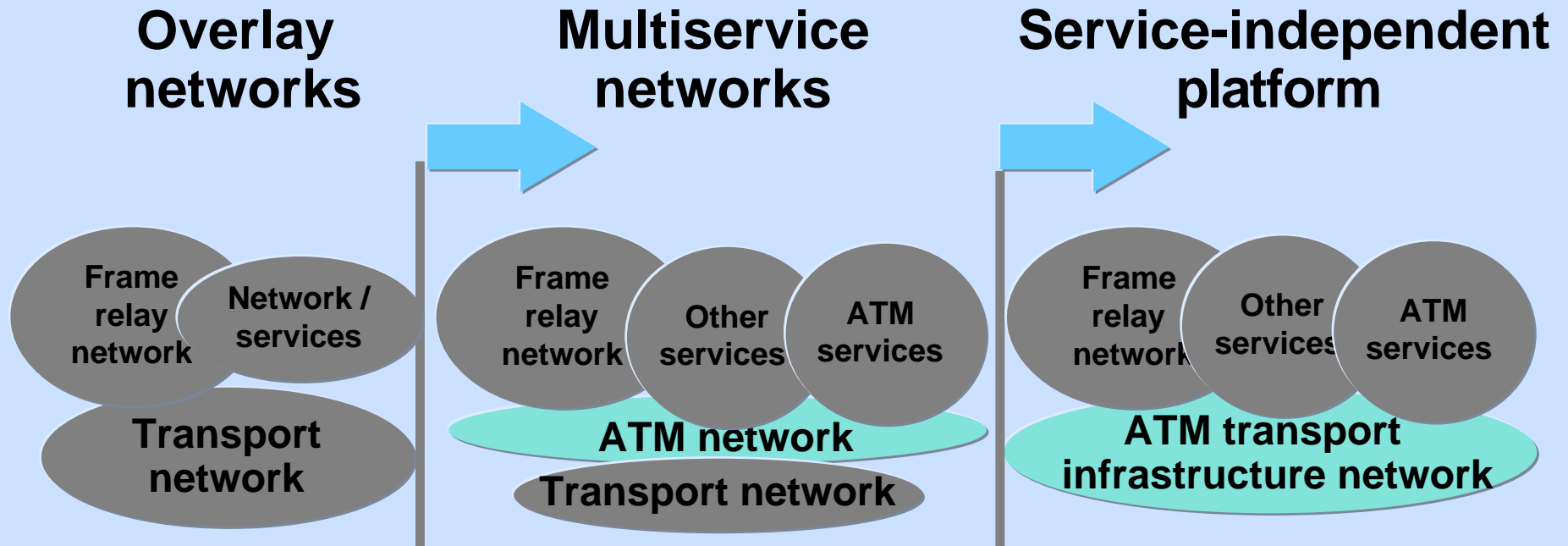
Emerging multimedia network trials

Today's meshed-networks



ATM has received industry-wide acceptance!

ATM Infrastructure Evolution



1994-1996

1996-1997

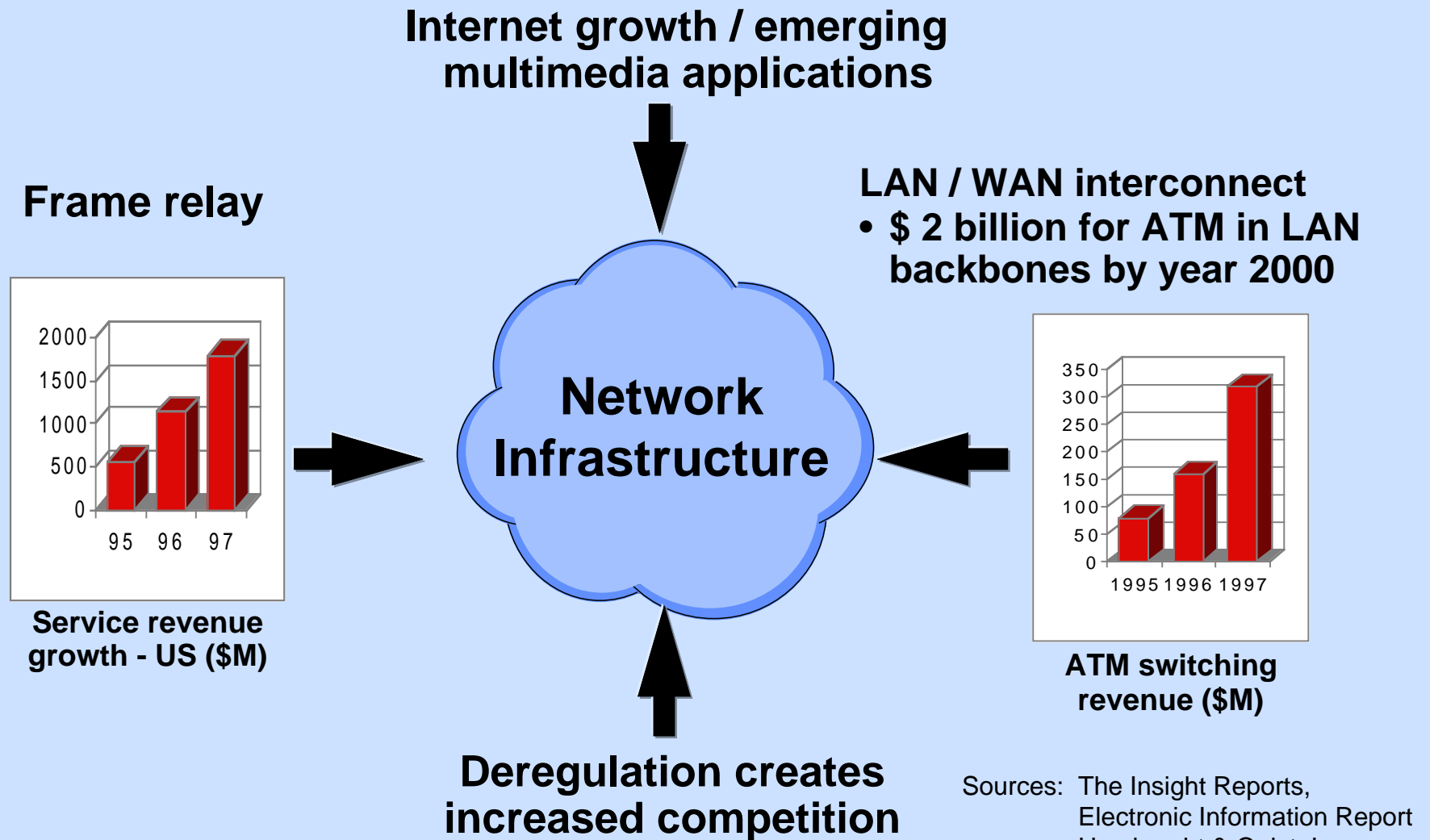
1998+

New service introduction

Volume deployment

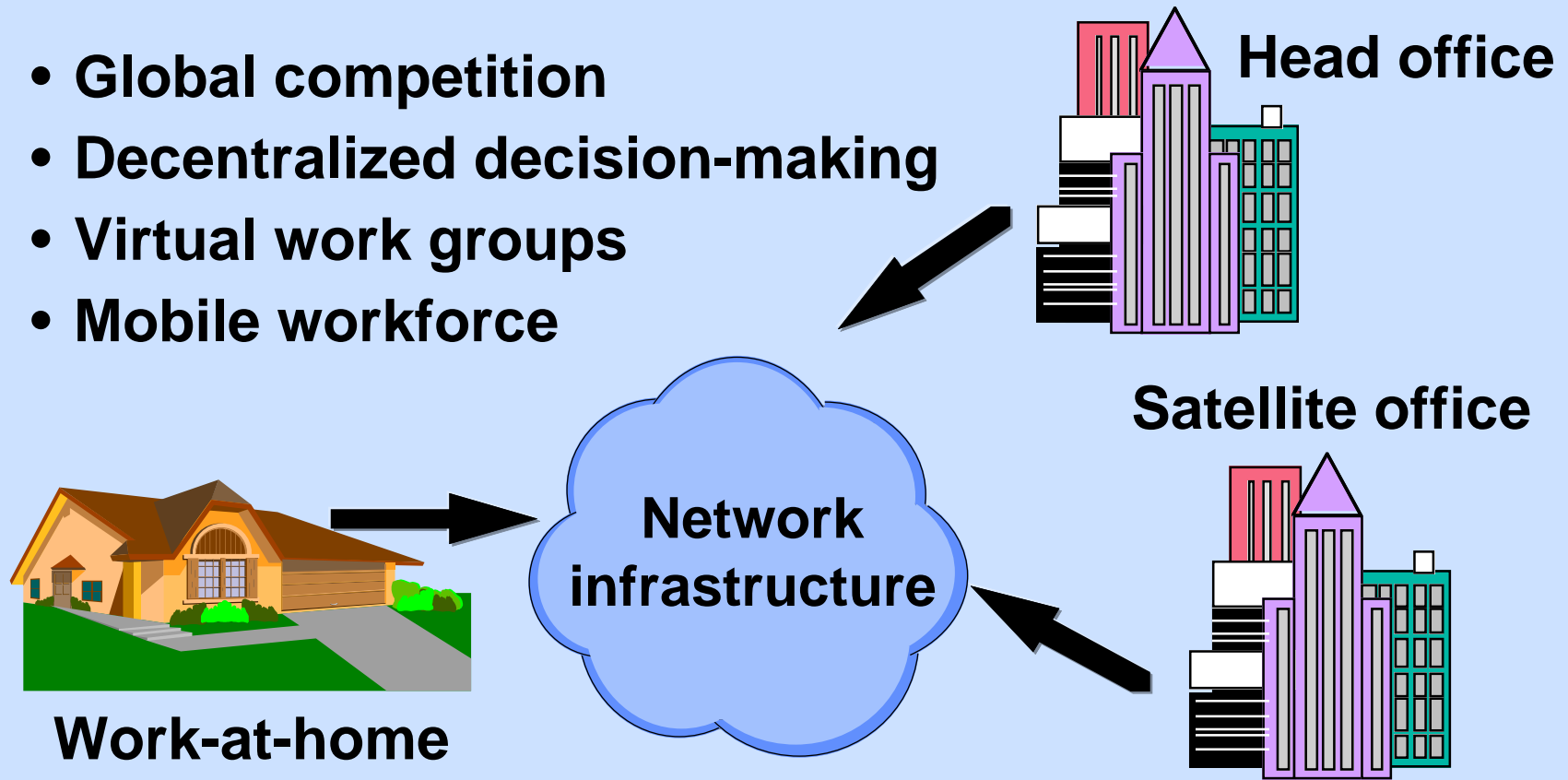
Over time, the core infrastructure will evolve

Key Infrastructure Drivers



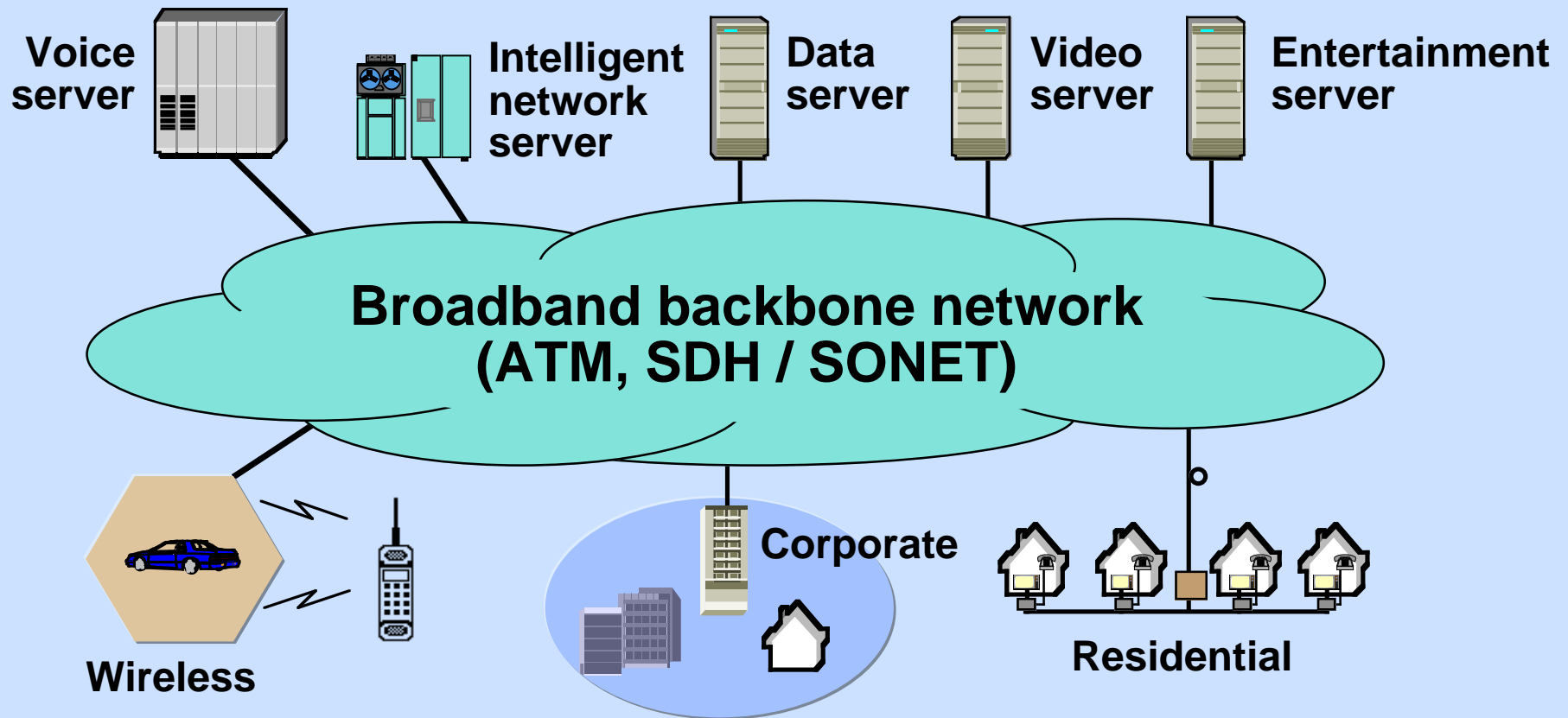
Changing Corporate Realities

- Global competition
- Decentralized decision-making
- Virtual work groups
- Mobile workforce



Information technology is a key to the success of your global organization

Future Backbone Networks will Support Multiple Services

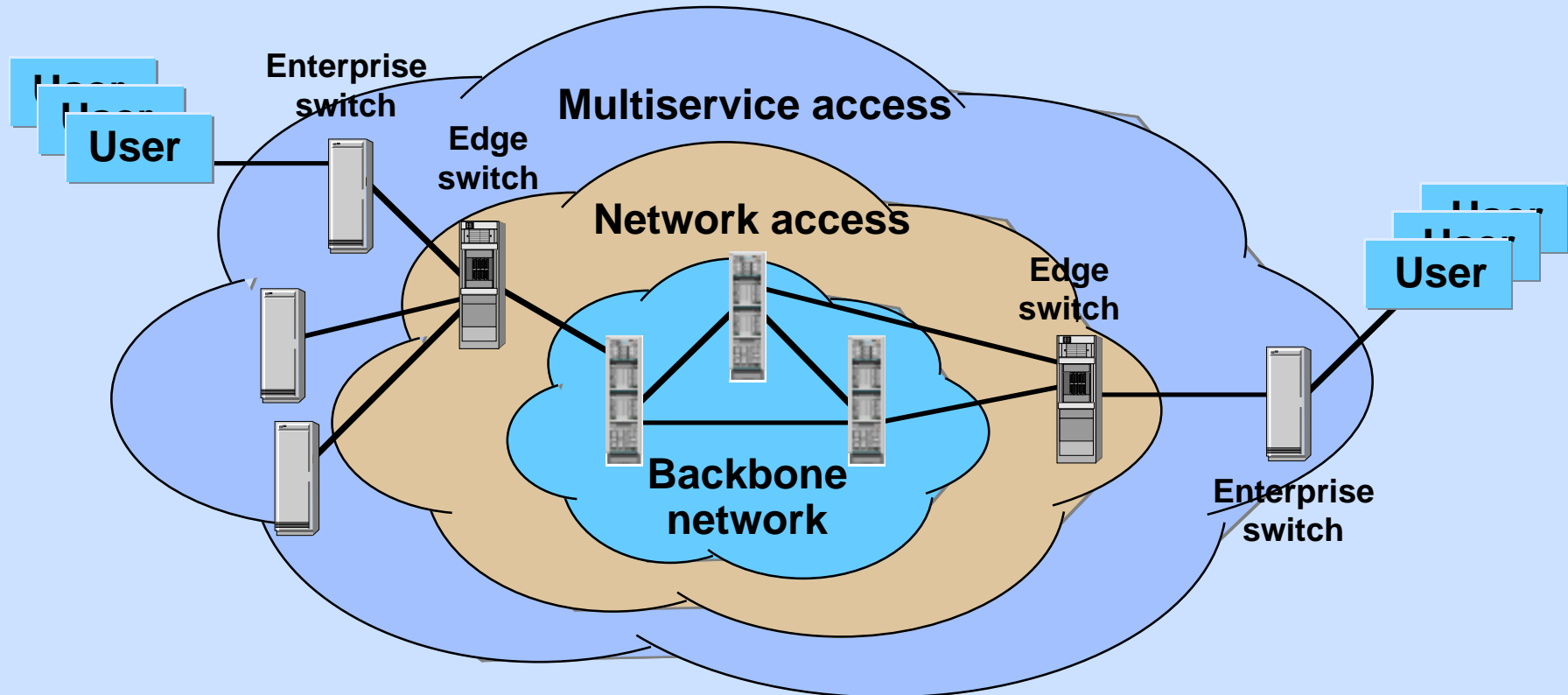


The public ATM backbone network is crucial to all services

Agenda

- The role of ATM in public networks
- **ATM network architecture**
- Role of Magellan Concorde in backbone infrastructure solutions

Network Architecture to Support Multiservice Networking



Multilayered network architecture provides deployment flexibility and economical network growth

Multimedia Services: ATM Backbone Switch Requirements

Success factors for infrastructure solutions

- Ability to provide new services
- Accommodate network growth
- Time-to-market for new services
- Seamless / transparent multimedia service offering
- Global exchange of mission-critical information



Backbone technology requirements

- Flexible, and scalable in network deployment
- Service evolvable platform
- End-to-end network control and service management capabilities
- Sophisticated traffic management
- Highly reliable core elements
- Fully standards compliant

Backbone technology must be flexible to support evolving network services and network requirements

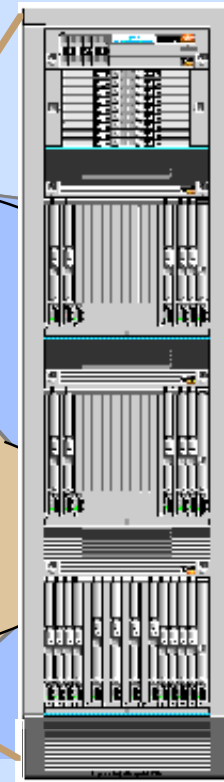
Agenda

- The role of ATM in public networks
- ATM network architecture
- **Role of Magellan Concorde in backbone infrastructure solutions**

Backbone Technology: Magellan Concorde

- **Key attributes:**
 - flexibility
 - scalability
 - service creation environment
 - reliability
 - high performance
 - multivendor interoperability

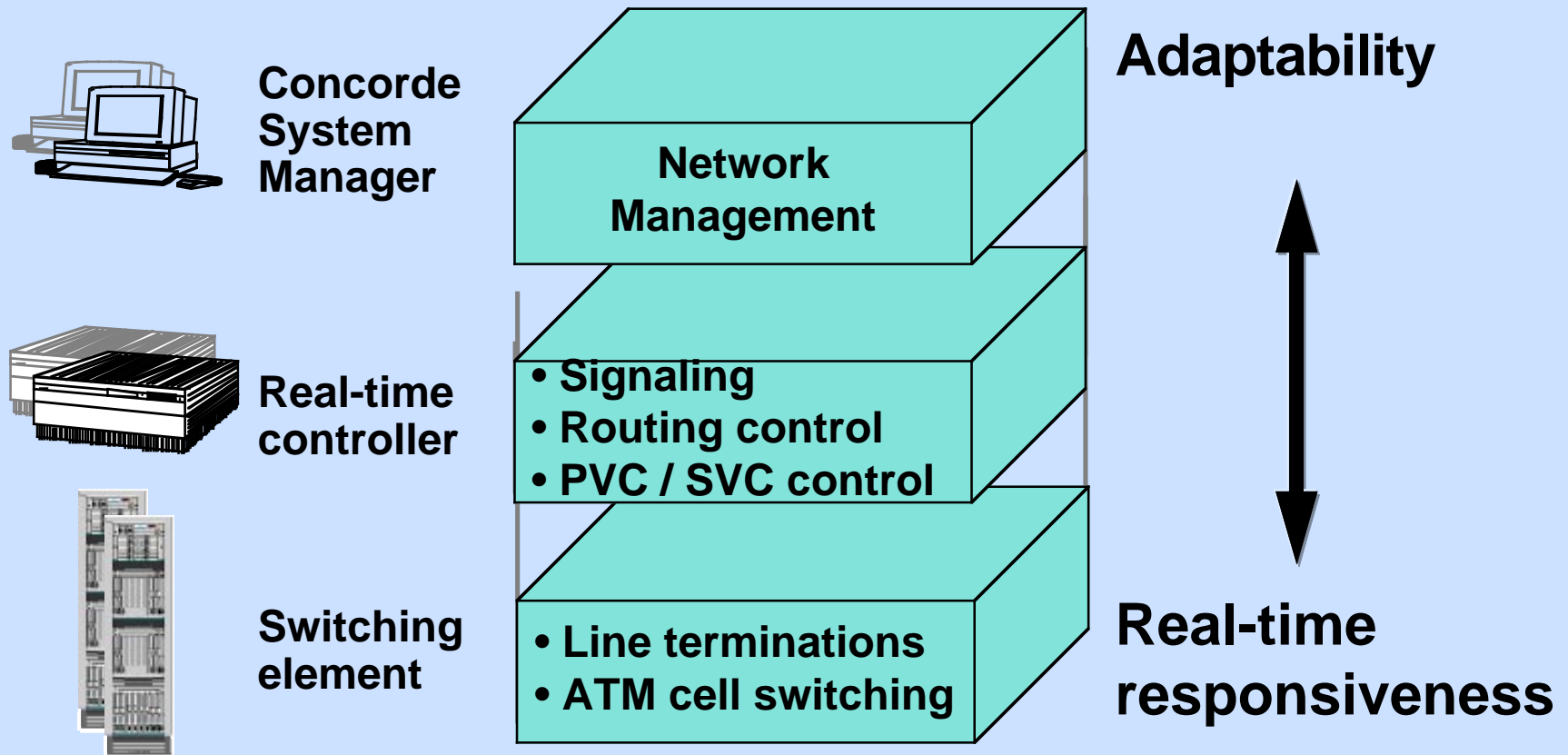
Magellan
Concorde



Magellan is a complete family of products
Seamless end-to-end service capabilities

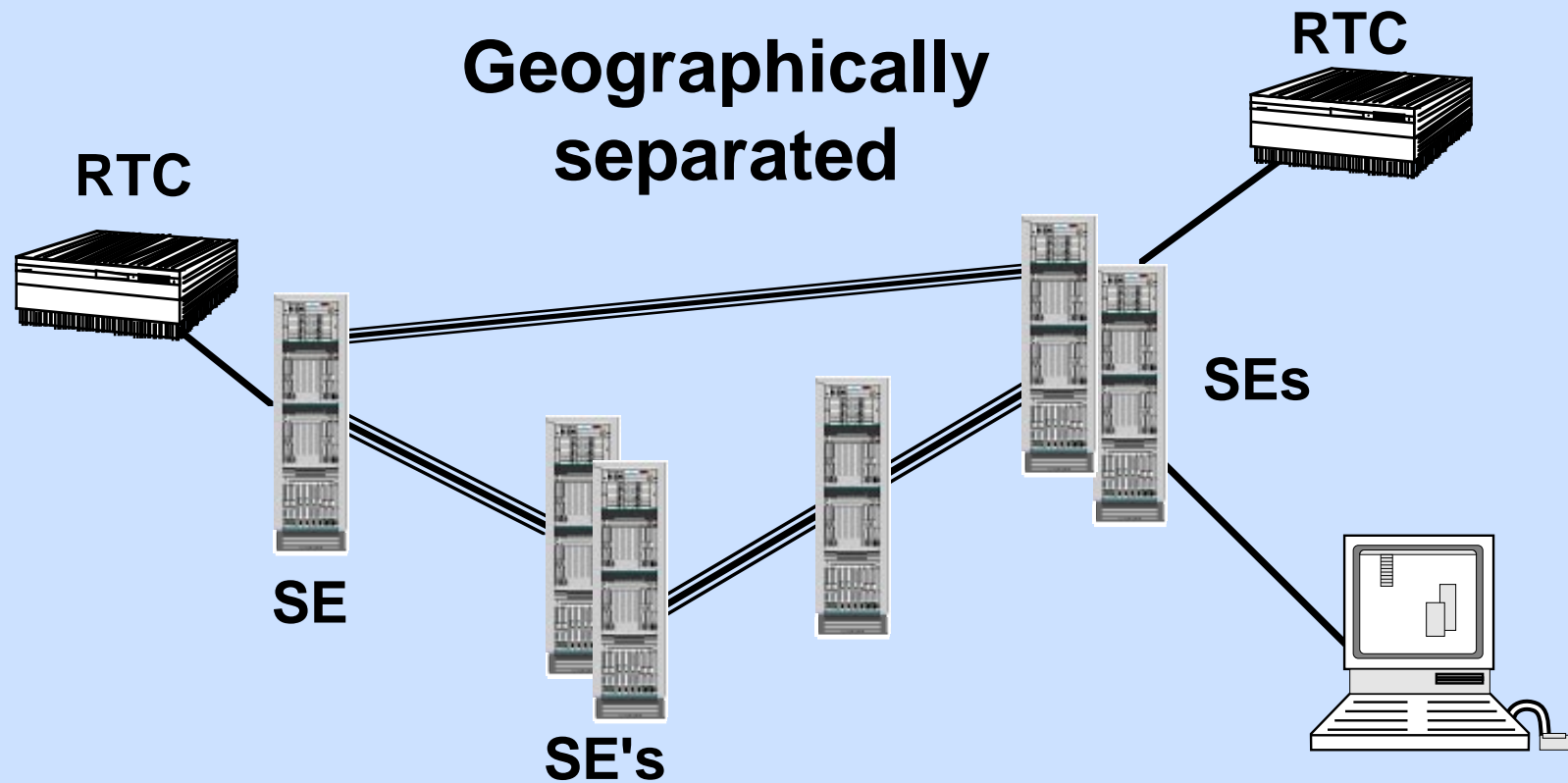
Magellan Concorde is a high-capacity, ATM backbone switch

Flexibility: Distributed Architecture



Modular design offers optimized functionality, and the flexibility to adapt to meet new service evolution

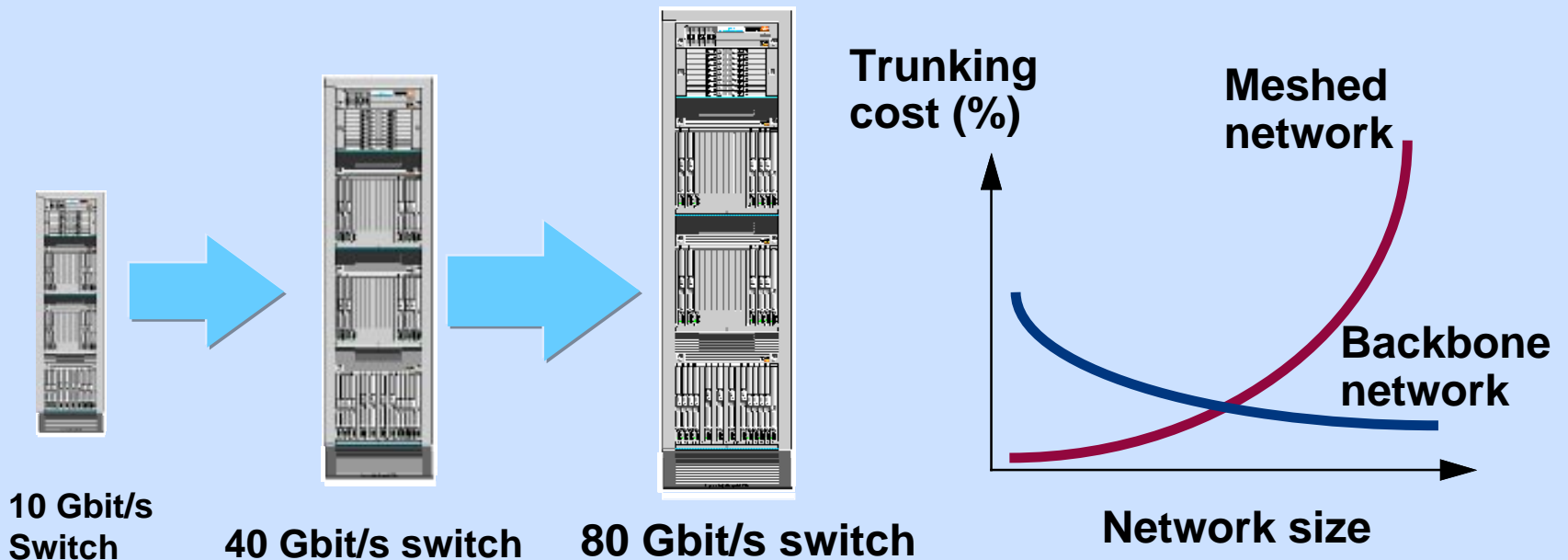
Flexibility: Network Deployment



**In-service scalability to meet network growth,
network performance and new service offerings**

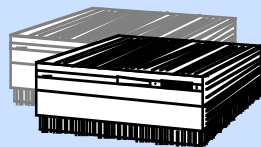
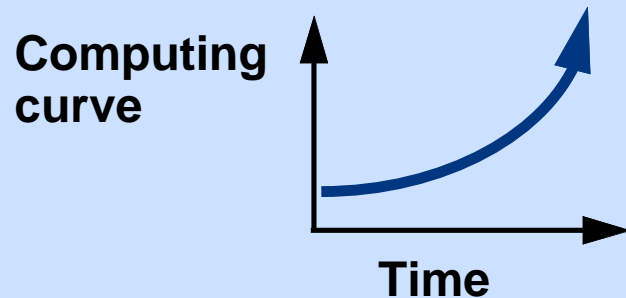
Scalability: Switch Capacity Evolution

Increased network access ports and capacity through the use of larger backbone switches



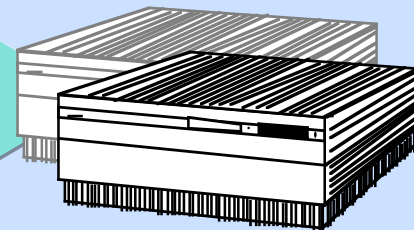
Protects your short-term investment, and your long term network growth objectives

Scalability: Switched Services Evolution



Real-time controller

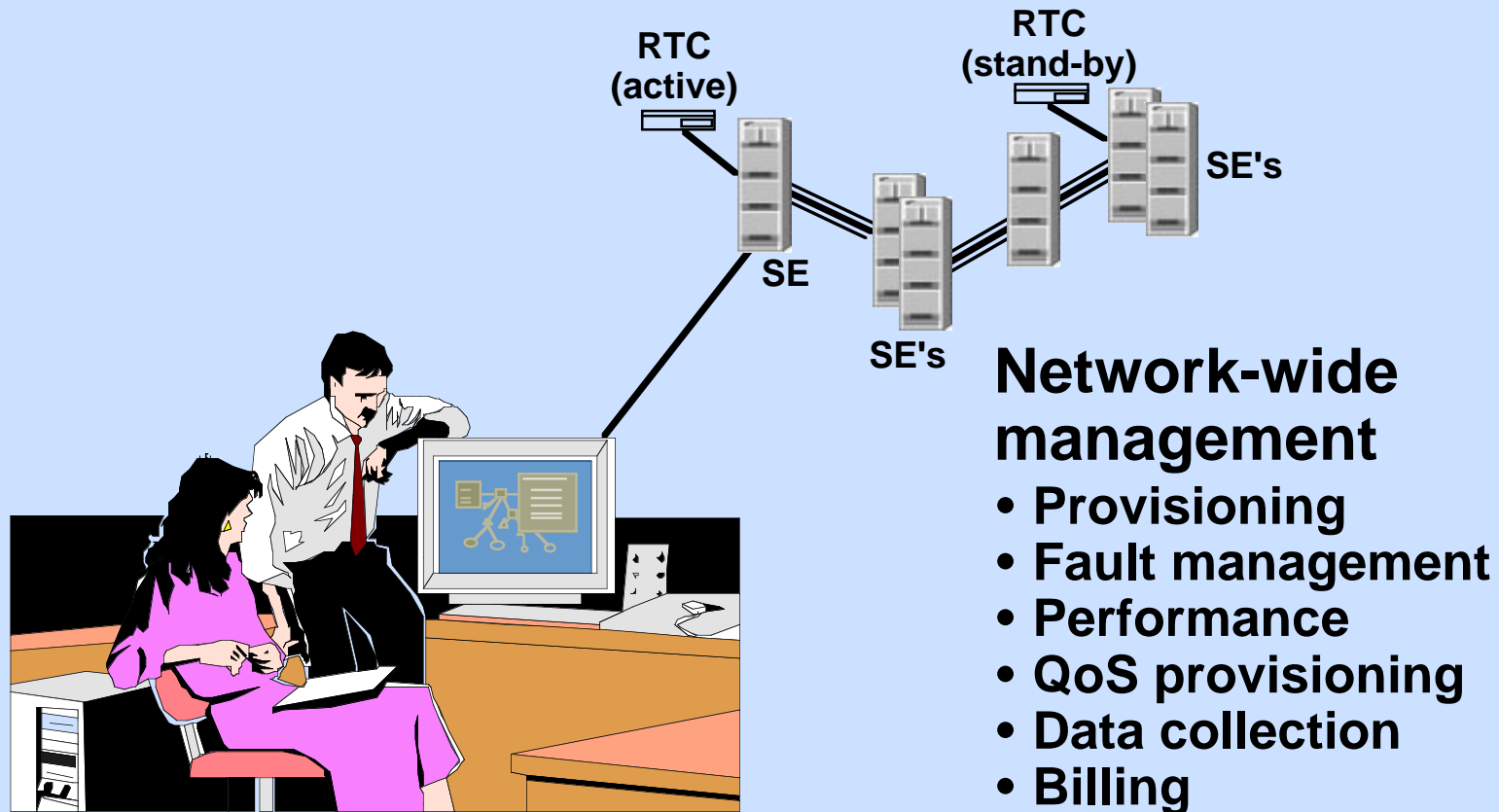
**Distributed processing
Computing platform
scalability**



Real-time controller

Ability to meet network growth, and evolve switched service requirements

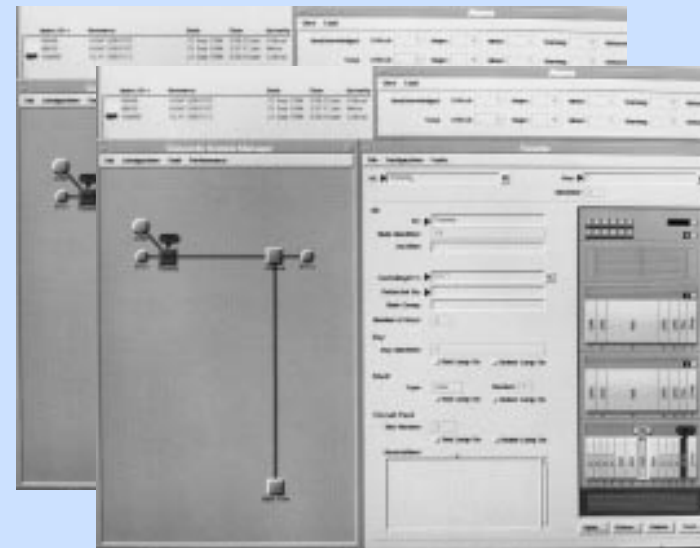
Service Creation Environment: Centralized Network Management



Enhanced cluster and network management capabilities

Service Creation Environment: Rapid Service Creation

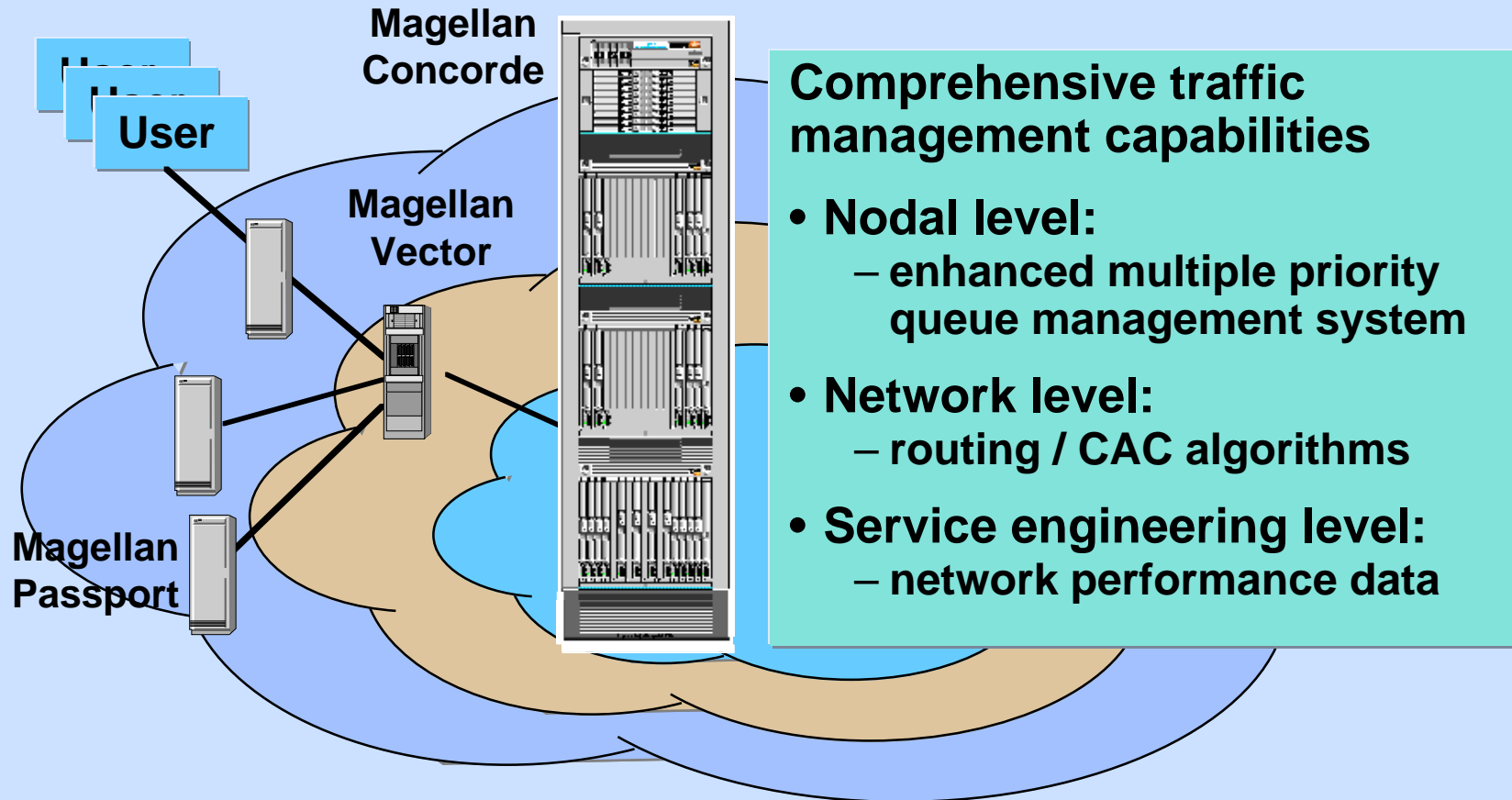
- Nodal level auto discovery
- Simplified service engineering with pre-engineered service descriptors



Service Creation Environment

Ability to quickly create new service sets

Service Creation Environment: End-to-end Traffic Management

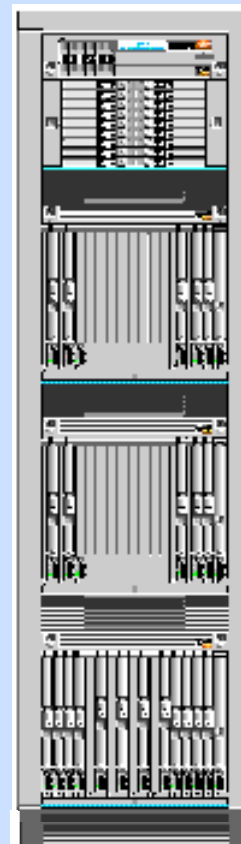


Common set of networking functionalities to ensure seamless deployment of end-to-end broadband networks

Reliability: Fully Redundant Architecture

Concorde delivers 1+1 sparing on all real-time components:

- Switching fabric
- Line modules
- Intra-switch connections
- Connection/call and control processing

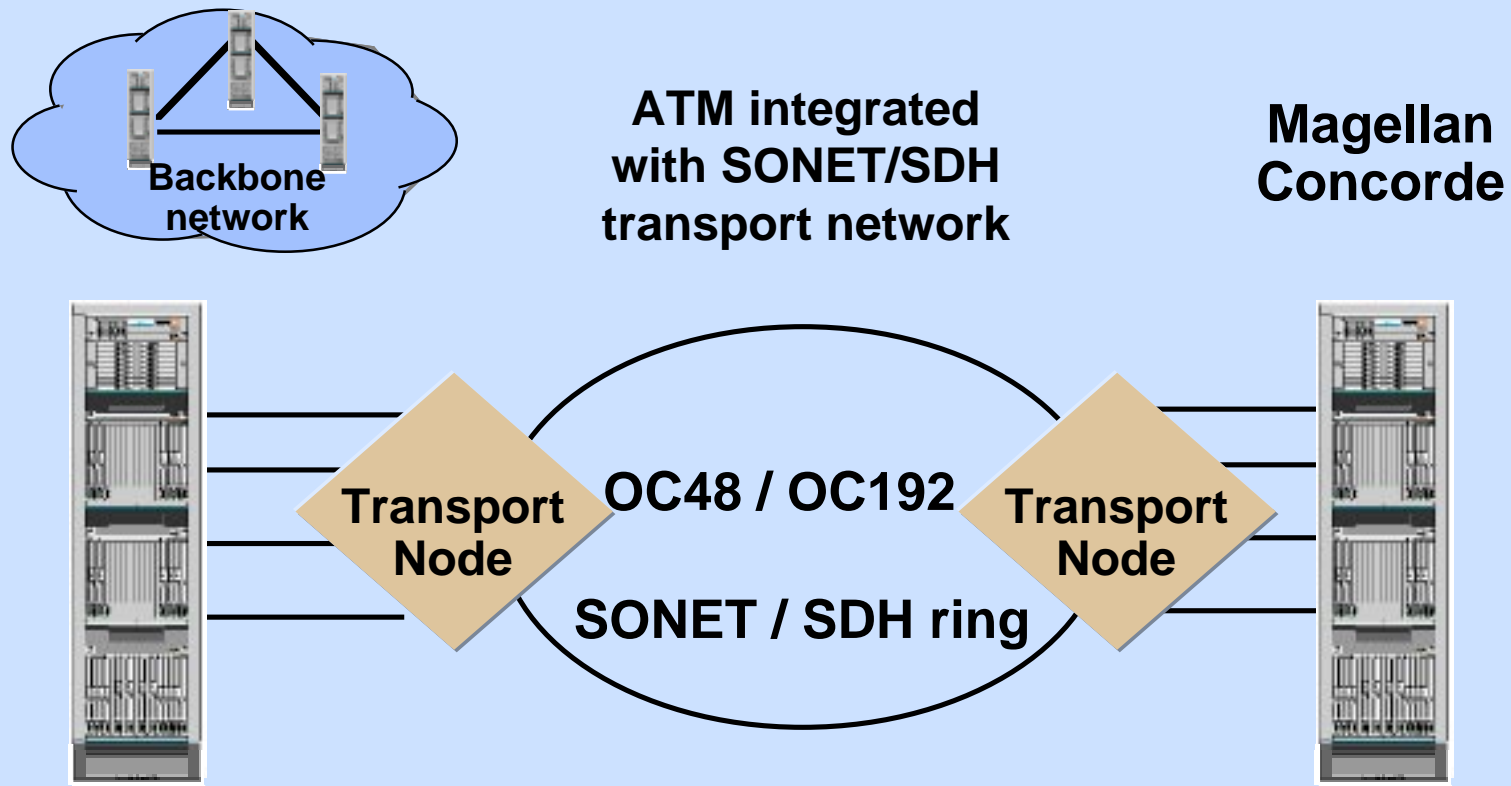


Redundant fabric planes

Redundant line modules

Highly reliable backbone switch - overall 99.98% switch availability

High Performance: ATM and SONET/SDH Interworking



Improved network reliability and survivability
Reduced long-haul transport cost

Multivendor Interoperability: Standards Compliant

**Concorde conformance to ATM Forum,
ITU, ETSI, and Bellcore standards**

Key attributes:

- ATM Forum UNI
- Q.2931, proxy signaling
- ATMF B-ICI
- SONET/SDH compliance
- NEBS
- CMIP



Benefits:

**Service
interoperability
in a multivendor
network
environment**

Nortel provides leadership in standards

ATM Infrastructure Checklist

Infrastructure attributes

Concorde features

- Network deployment options:
Flexible, scalable, and evolvable ✓
- Sophisticated traffic management ✓
- End-to-end network control and
service management ✓
- Highly reliable network elements ✓
- SONET / SDH capabilities ✓
- Fully standards compliant ✓

Winning with Magellan Concorde

Key Concorde attributes

Advanced

- System architecture
- Network management
- Service capabilities

Benefits

- Increased deployment flexibility
- Economical network growth
- Meeting time-to-market requirements for new service opportunities
- Increased system reliability
- Enhanced service capabilities

Service provider values

- Reduced operating costs
- Reduced capital expenditures
- Improved business objectives

Enterprise values

- New service offerings
- Flexibility of services
- Time-to-market (new services)