

1

2 (a) (b)

3

4

5

6 4

2 가

가

<

>

100...

101, 102, 103, 104, 105, 106...

110, 120, 130, 140, 150, 160...

111, 121, 131, 141, 151, 161...

300...

301...

310, 320, 330, 340, 350, 360...

311, 321, 331, 341, 351, 361...

(air conditioner)

(multi)

1

1, (100) (110, 120, 130, 140, 150, 160)가 1:1, (110, 120, 130, 140, 150, 160) (100) (module) (111, 121, 131, 141, 151, 161) (101, 102, 103, 104, 105, 106) (111, 121, 131, 141, 151, 161)

(110, 120, 130, 140, 150, 160) (101, 102, 103, 104, 105, 106) (111, 121, 131, 141, 151, 161) (101, 102, 103, 104, 105, 106) (111, 121, 131, 141, 151, 161)

2 (a) (b)

2, (100) (110, 120, 130, 140, 150, 160) (101, 102, 103, 104, 105, 106) (111, 121, 131, 141, 151, 161) 3 (111, 121, 131, 141, 151, 161)

(101, 102, 103, 104, 105, 106) (111, 121, 131, 141, 151, 161) 2 (a) 2 (b)

(110, 120, 130, 140, 150, 160) (110, 120, 130, 140, 150, 160) 가 가

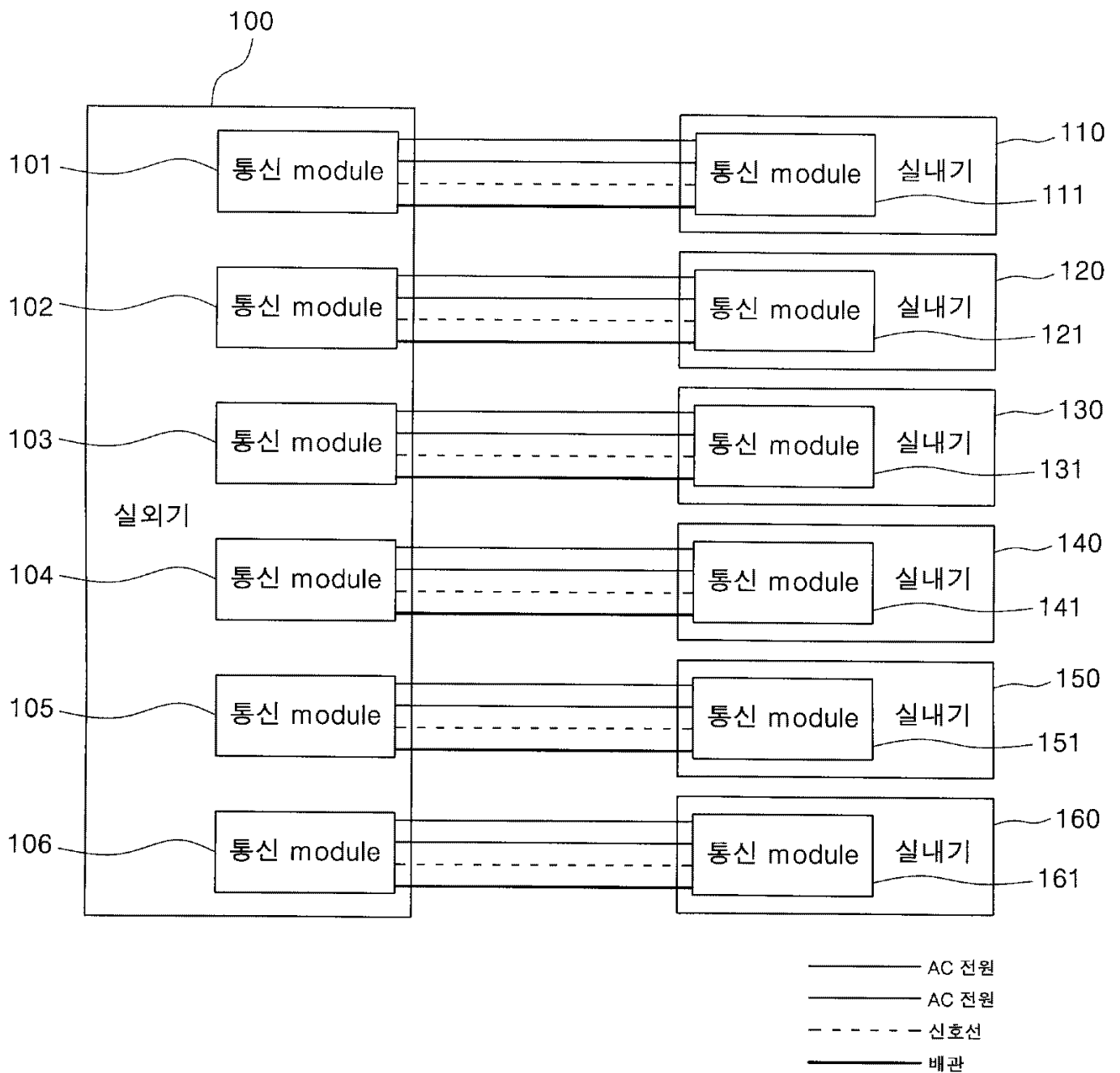
- (a) 가 (carrier) ;
- (b) (a) ;
- (c) (b) 가 ;
- (d) (c) 가 ;

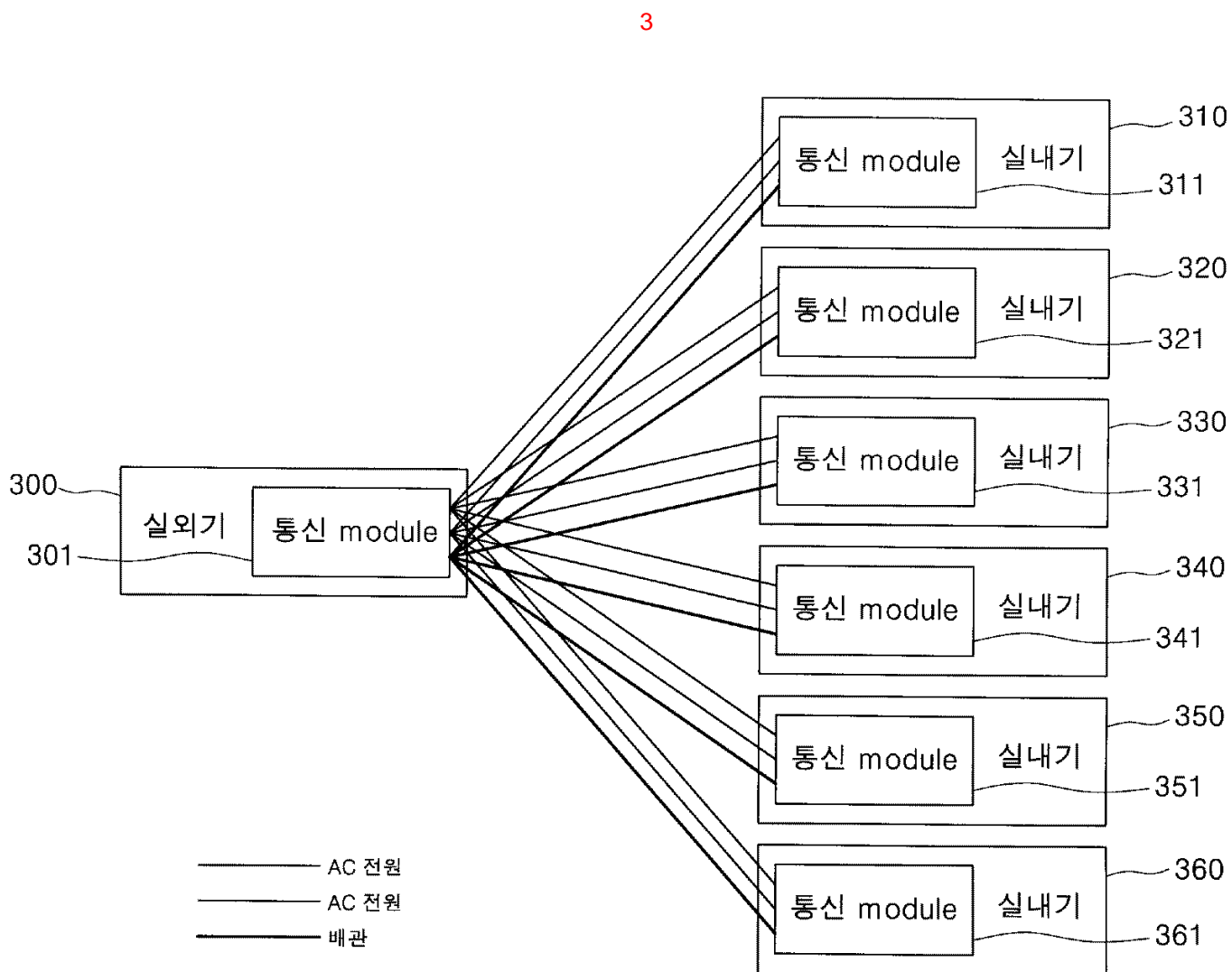
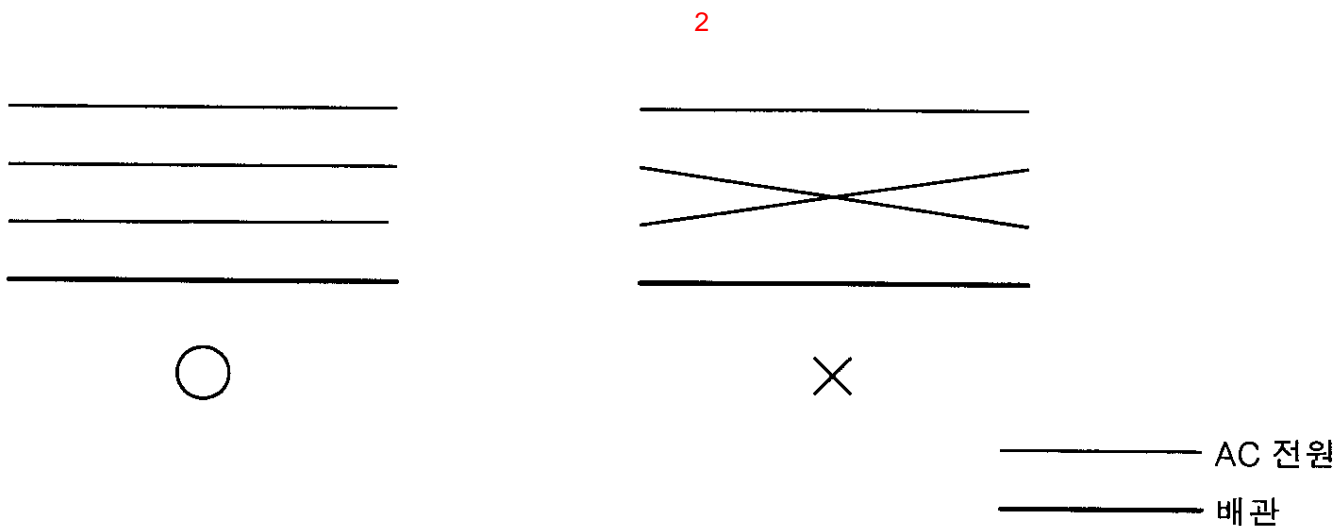
(310, 320, 330, 340, 350, 360) fL fH (f_i + f_j)가
 i, f_j)가 6 4 가 6 2 가
 (f_i + f_j)가 (300) (f_i + f_j)가 (310, 320, 330, 340, 350, 360)
 fL fH (f_i + f_j)가 (f_i + f_j)가 fL fH (f_i + f_j)가
 502 fL fH (310, 320, 330, 340, 350, 360) 505 (300) 가 (300)
 (300) (310) 가 (310)
 (506).
 가 (320, 330, 340, 350, 360)가 (320, 330, 340, 350, 360)
 (310)가 가 (320, 330, 340, 350, 360)가
 360) 가 506 502 가
 (310)가 (320, 330, 340, 350, 360) (310)
 (507).
 (320, 330, 340, 350, 360) (300) (310)
 506 (310, 320, 330, 340, 350, 360) 502 가
 가 (310, 320, 330, 340, 350, 360) (300) (310, 320, 330, 340, 350, 360)
 가 fL fH (300) (310, 320, 330, 340, 350, 360)

(57)

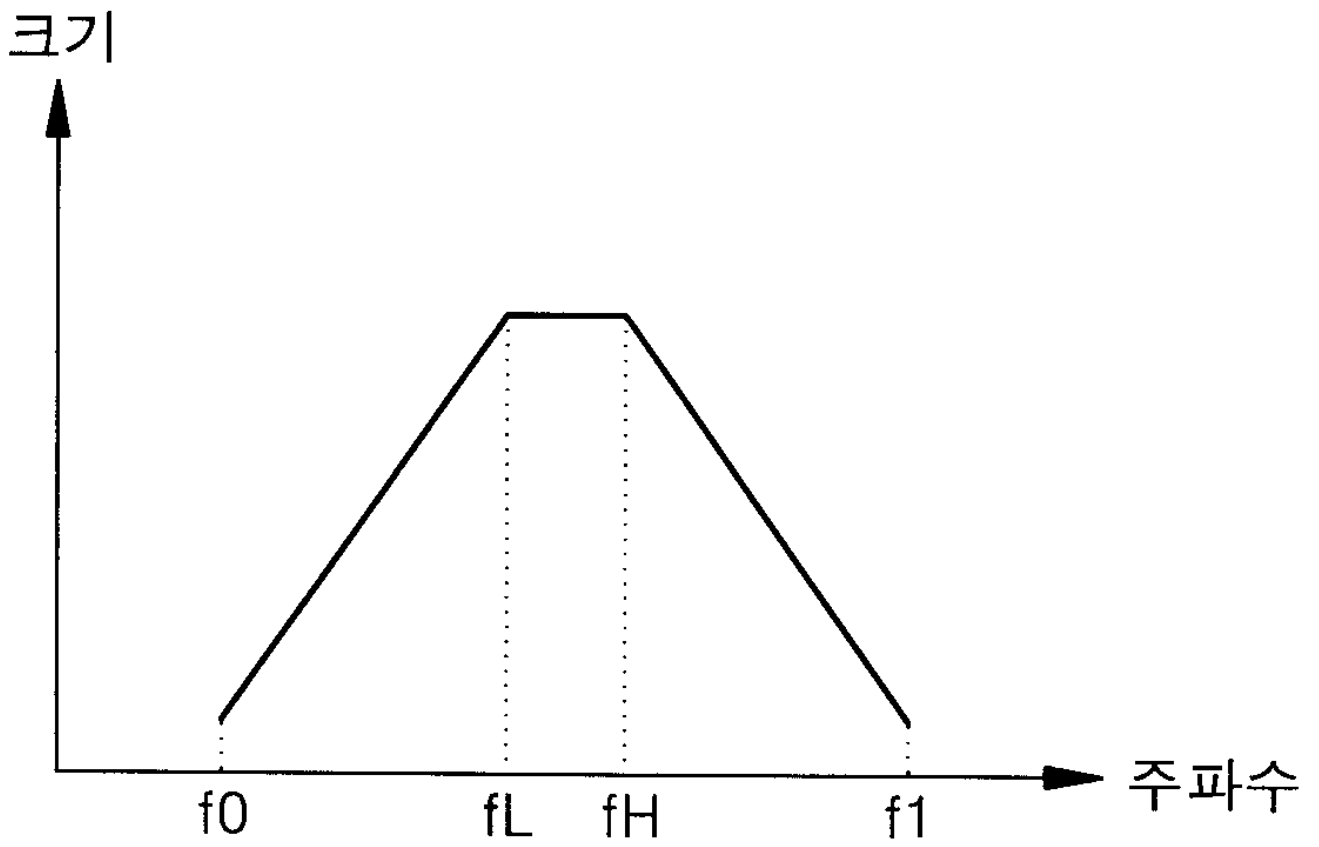
1.

- (a) 가 ; ,
- (b) (a) ; ,
- (c) (b) 가 , ;
- (d) (c) , 가 ;
- (e) (d) 가 , ;
(a) ,

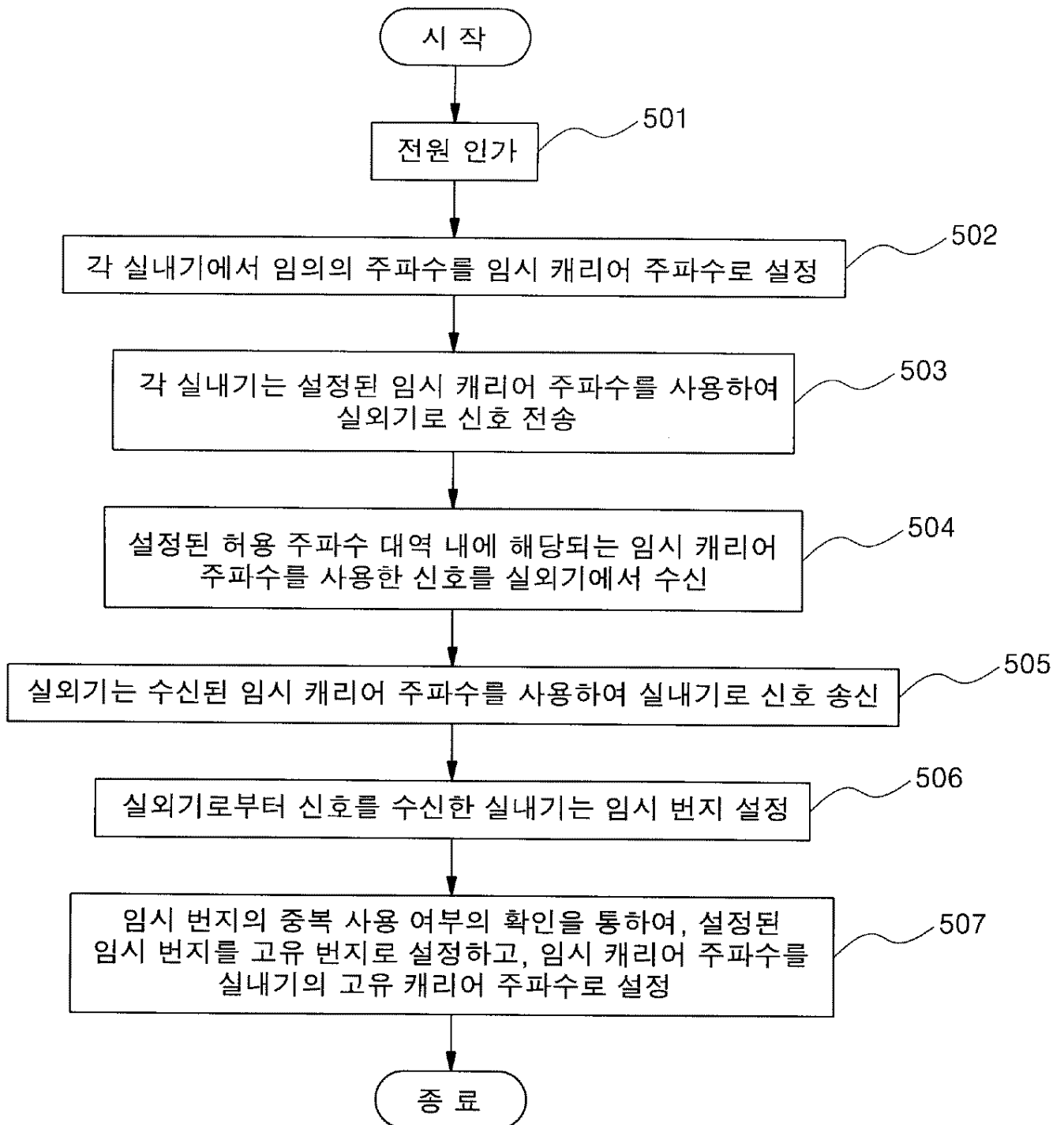




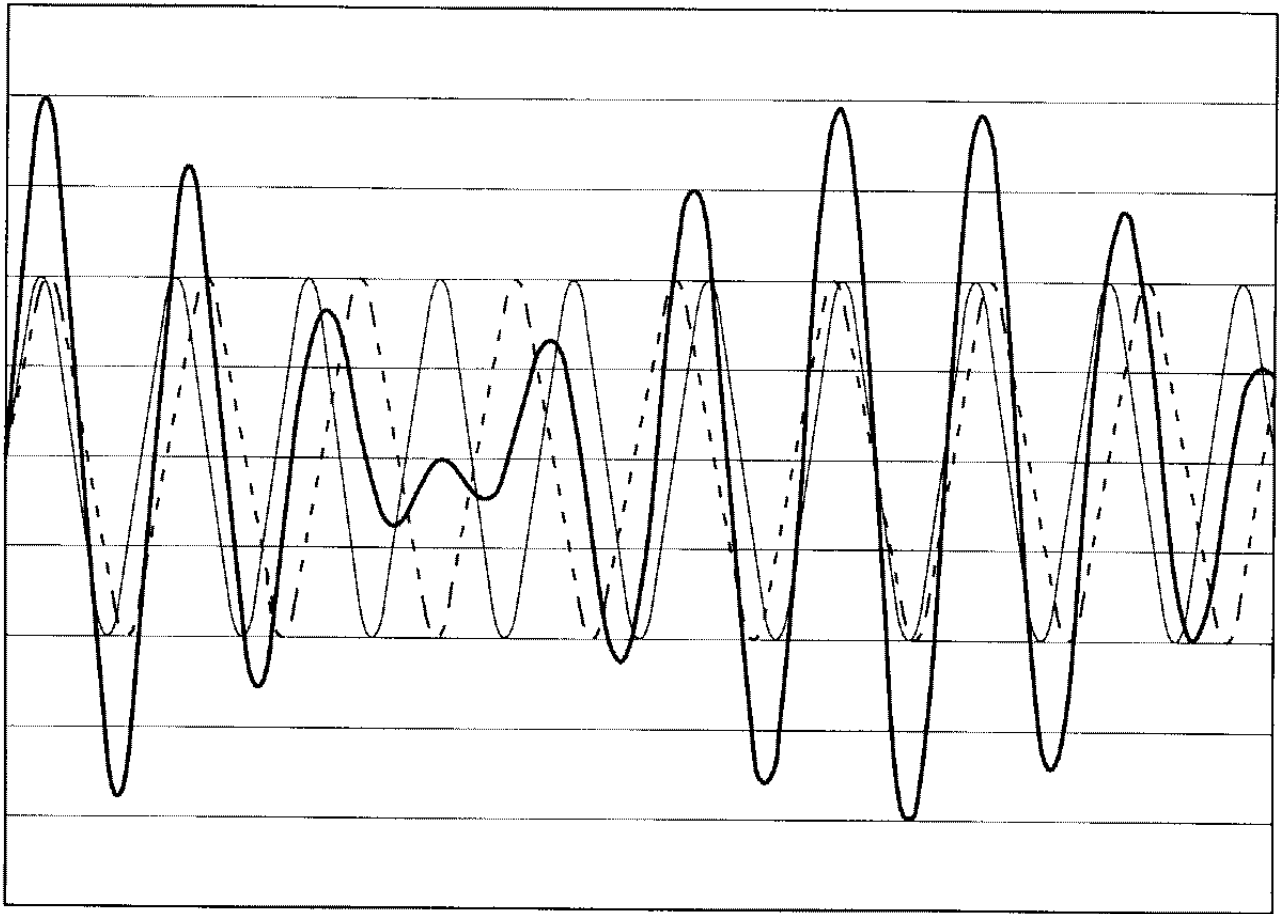
4



5



6



— f_i
- - - f_j
— $f_i + f_j$