

(19)
(12)

(KR)
(A)

(51) 。 Int. Cl. ⁷
H04B 3/54

(11)
(43)

2001 - 0086817
2001 09 15

(21) 10 - 2000 - 0010728
(22) 2000 03 03

(71)

20

(72)

31 304

(74)

:

(54) 2

가

,

,

가

가

가

7

, , , , ,

IC,

1

,

2

3

4 1 A, B, C, D, E, F

5

6 RC 2

7 2

< >

50 : 51(X) : ()

52 : IC TR :

R1, R2 : 1 2

가

2

2

M12,M13) 1 (C11,C12,C13) 가 , 1 (M21) (M11,
13) 가 1 (C11,C12,C13) 2 (C21,C22,C23) 가 (M11,M12,M

C23) , 가 가 , 가 가 (M21) 가 2 (C21,C22,

가

가

(2) 가 / 가 (1)
 (duty)
 (3) .

B , 2 (1) A 가 (3)
 (4) , 2 C (4)
 220V AC (4) .

(A) (4) 4 D E (5)
 (5) IC(Sensing Integrated Circuit) F (5)

가 .

5 , (11) 가 (12) (11)
 가 (13) (14) (TX)
 (15) .

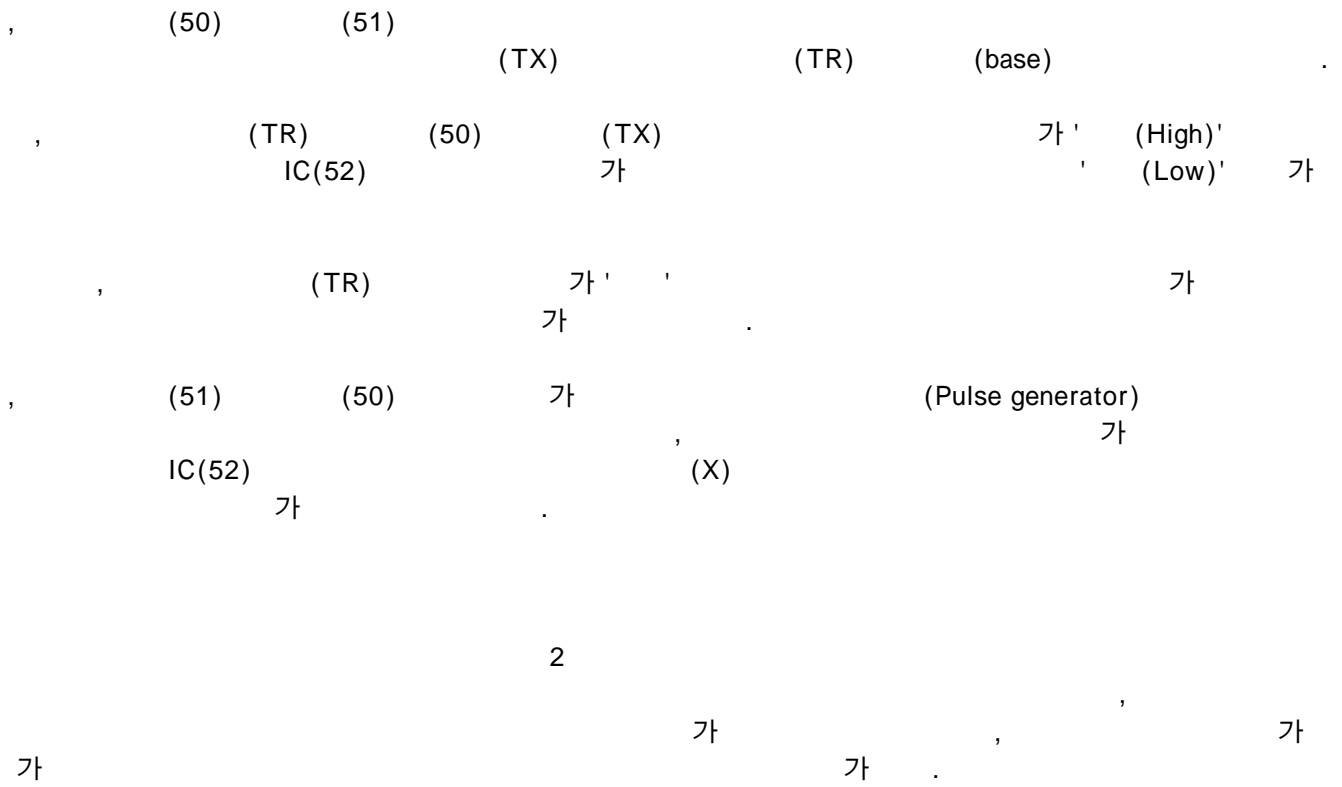
4 RX , GND R1 R2 , X (crystal, X - tal) C1 C2 ,
 (12) (X), (13) 가

5 (21) 가 R, C ()
 22) R12 C12 , 가 가 .

5 6 가 가

3 6 7 (51)가 2 가 (RX)
 (TX) (50) ; (51)
 IC(52) , (TR) ; 1 2 (R1,
 R2) .

(collector) , (51) (50) IC(52) (TR)
 IC(52)



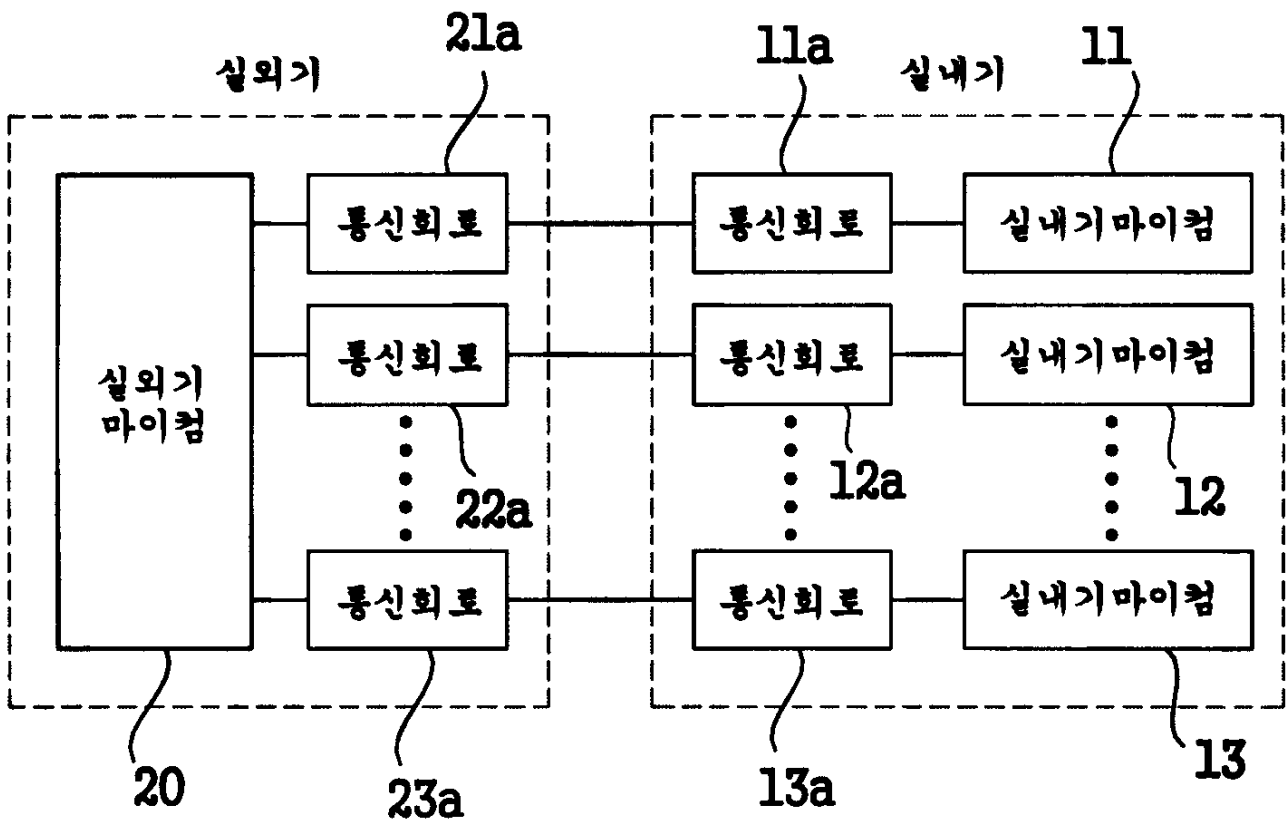
(57)

1.

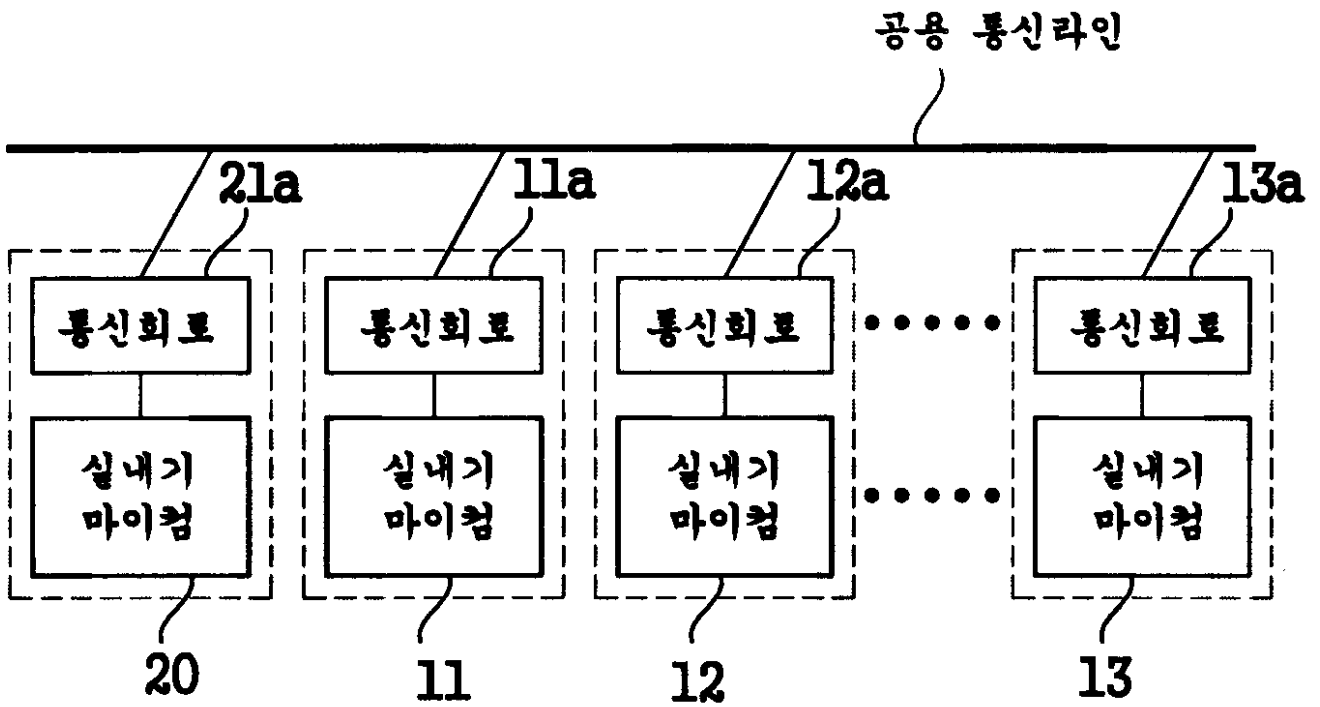
가

2

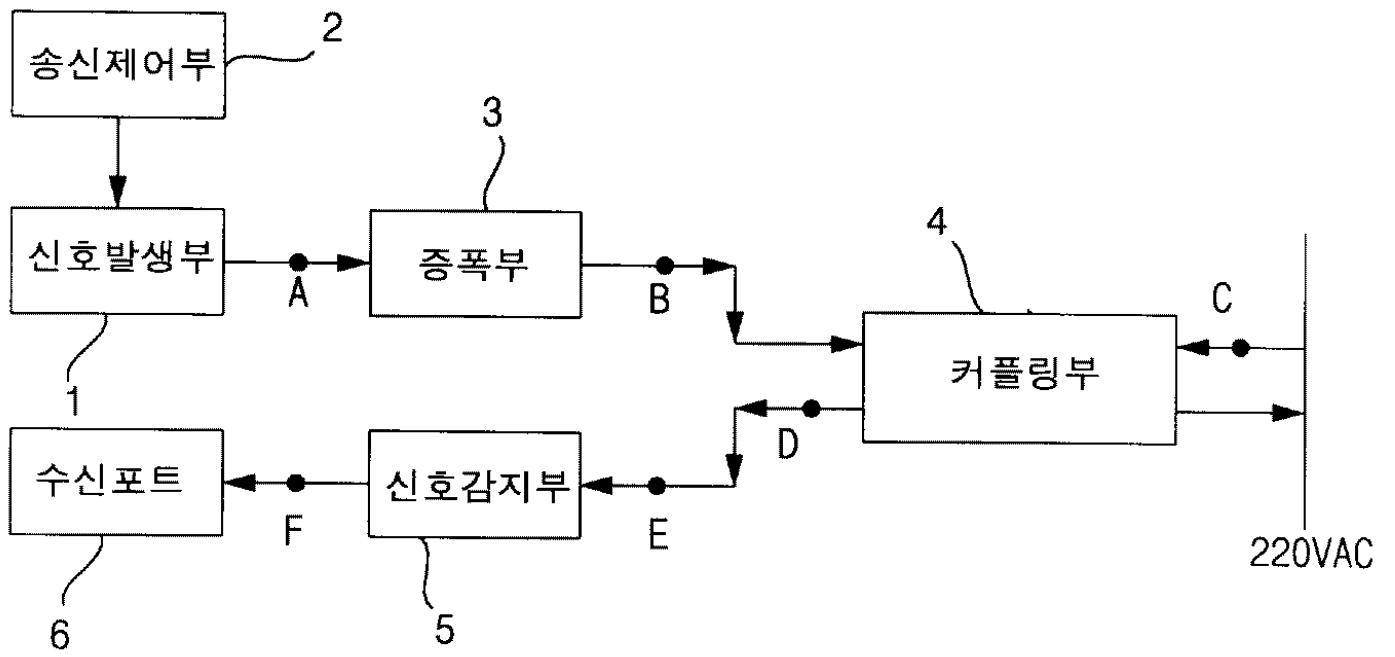
1



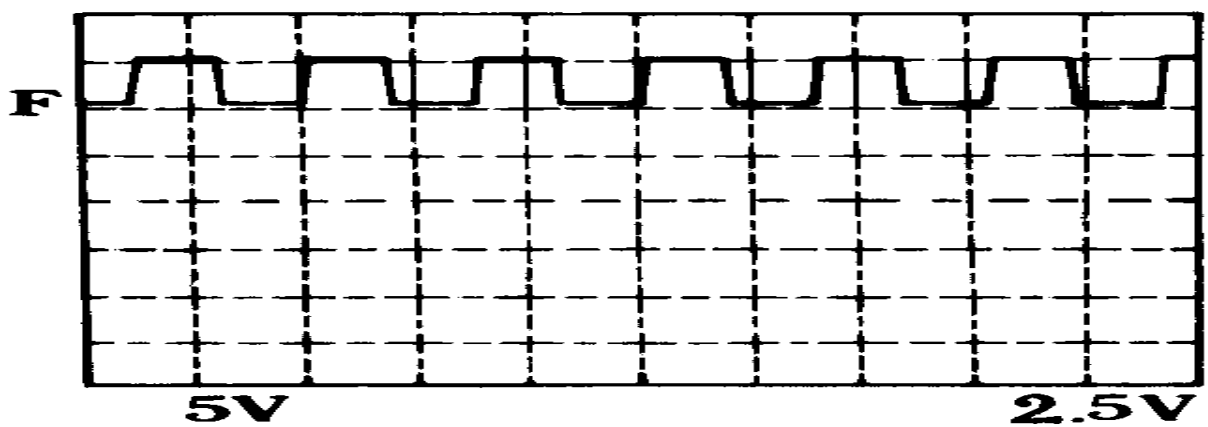
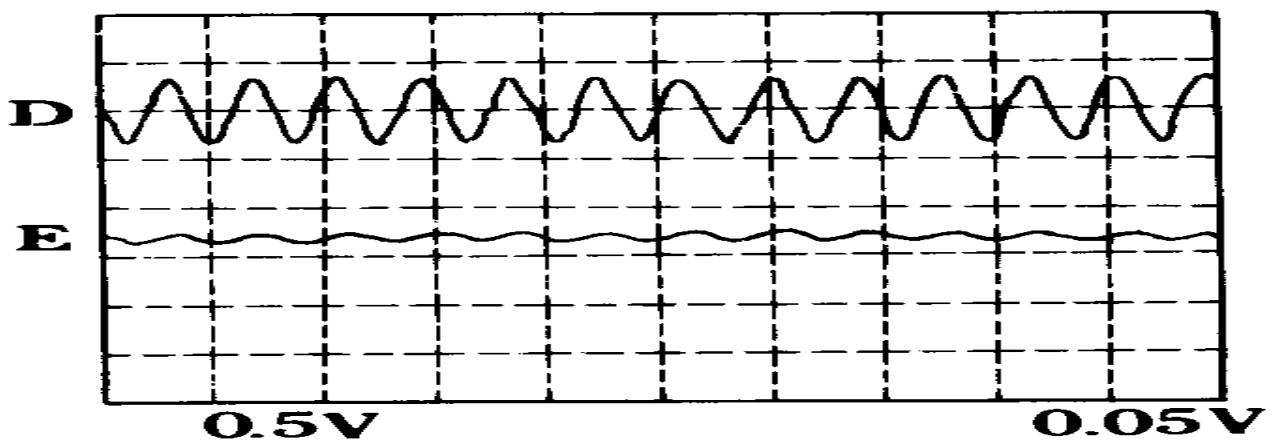
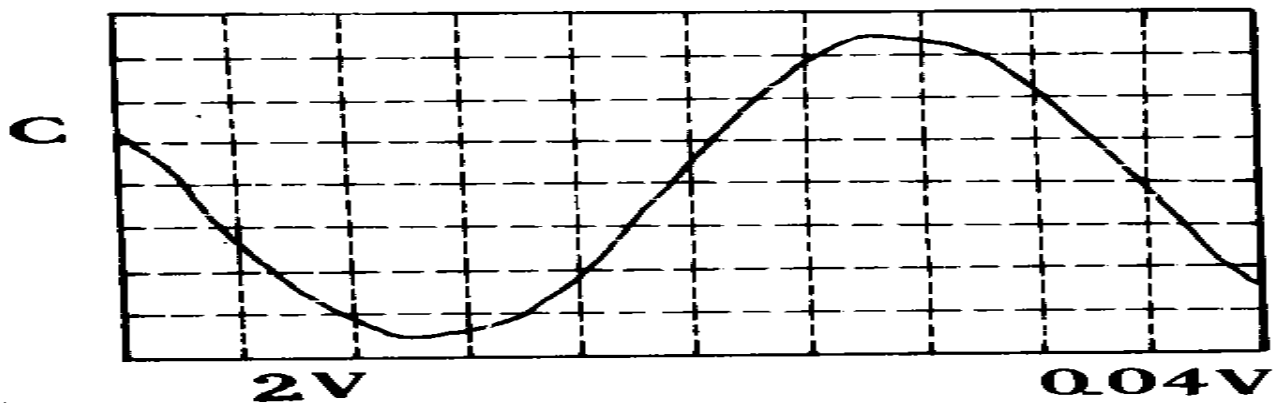
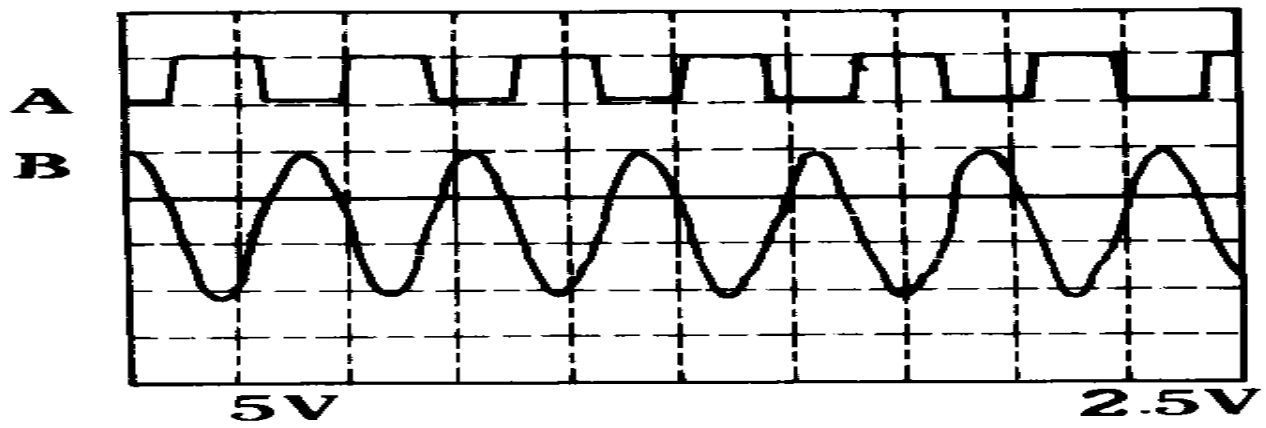
2



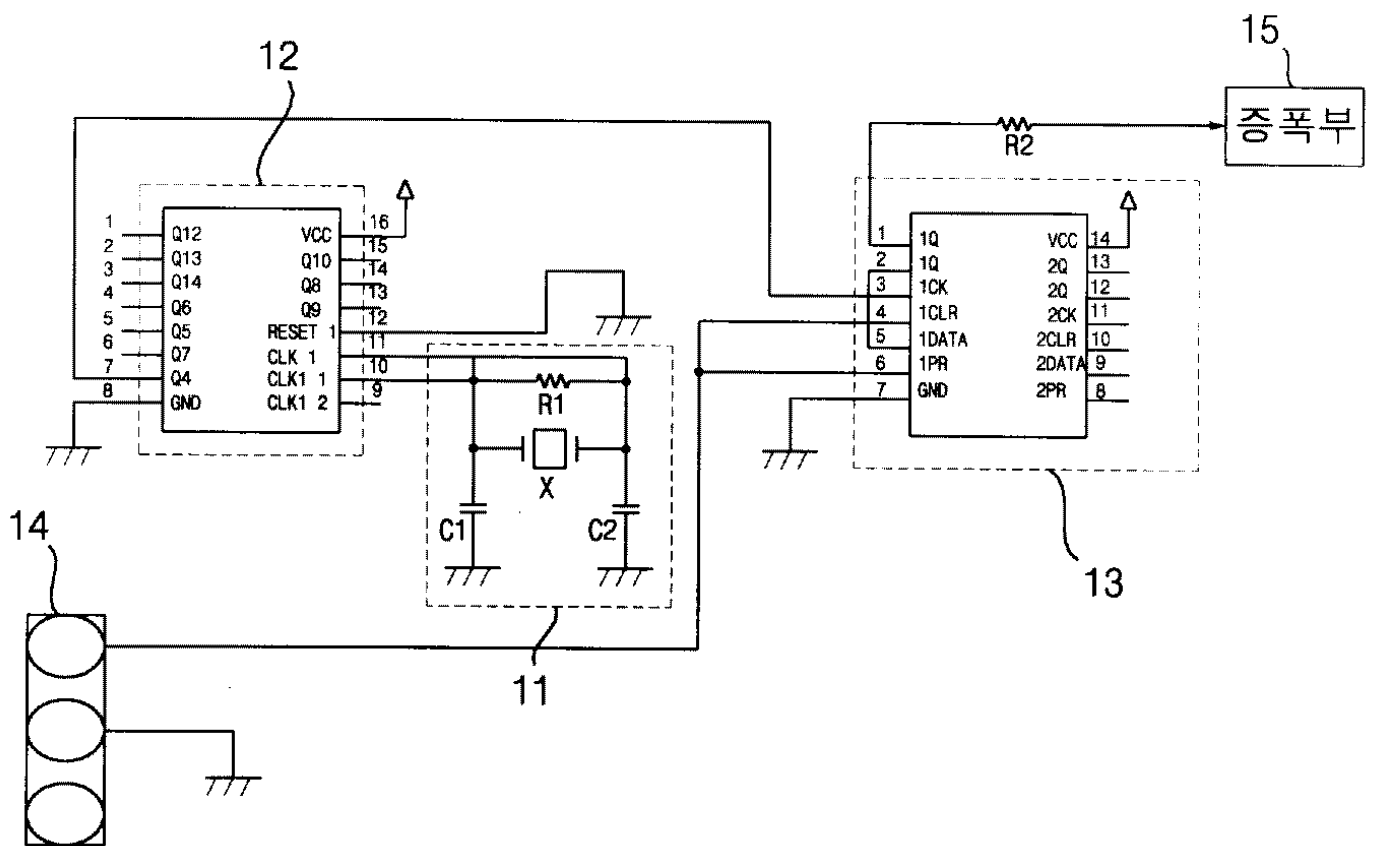
3



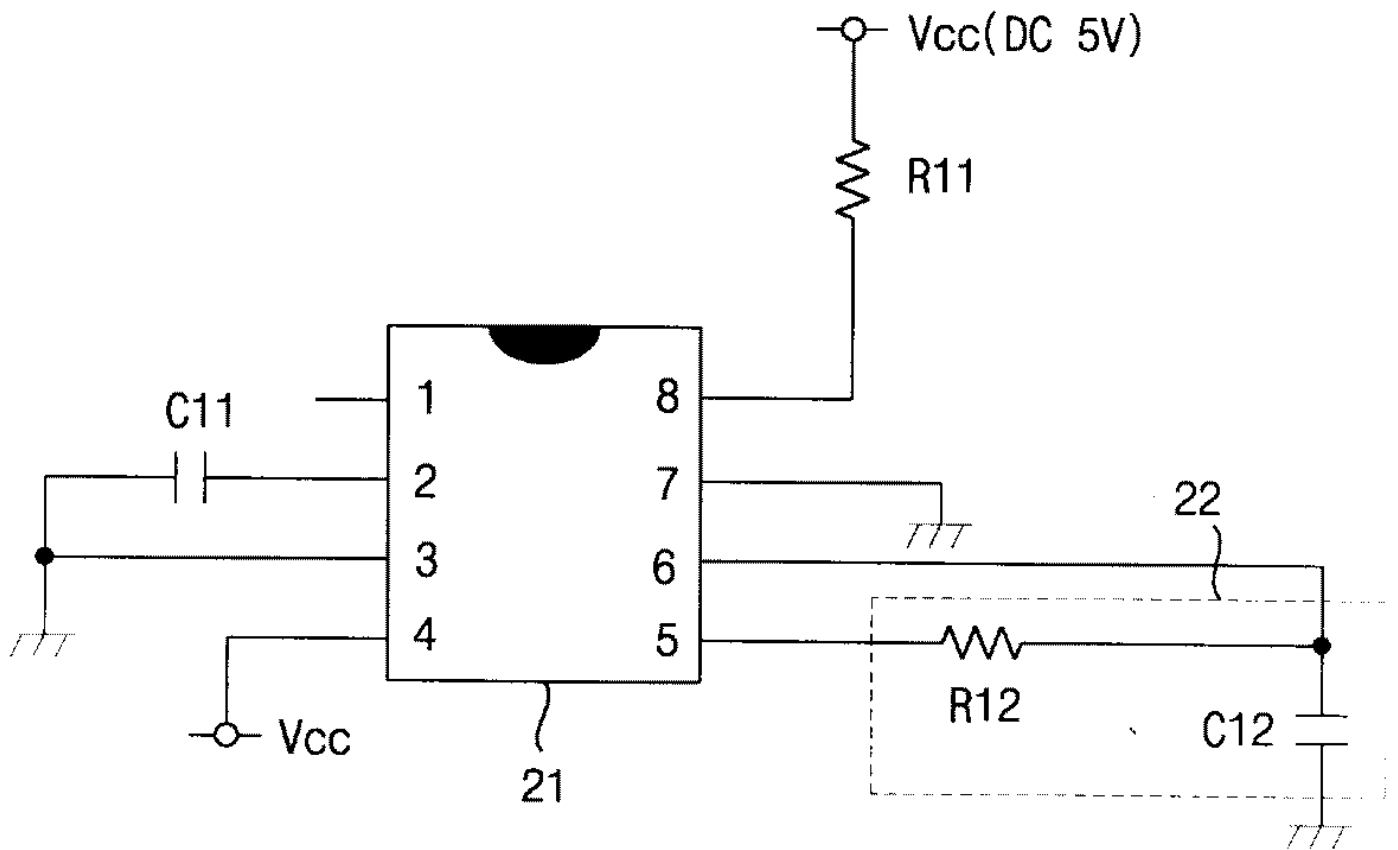
4



5



6



7

