

(19)  
(12)

(KR)  
(Y1)

(51) 。 Int. Cl. 7  
H04Q 9/00

(45)  
(11)  
(24)

2001 12 29  
20 - 0258371  
2001 12 10

(21) 20 - 2001 - 0029789  
(22) 2001 09 27

(73) 2 475 - 22

(72) 9 220 - 12504

1 3 103

(74)  
:

가 :

(54)

/ , / , / , / , / ,

(PLC)

(matching)

가 .

1  
 2  
 3 1 - dB  
 4  
 5 4  
 6 4  
 7 4 - dB

110 : 120 : /  
 130 : 140 : (PLC)  
 150 : 160 :  
 161 : 1 162 : 2  
 163 : 164 :

1  
 (2) , (3) , (Power Line Communication: PLC ) (4) , (1) , /  
 5) , ( ) .  
 / (2) (1) 가 /  
 (3) / (2) /  
 PLC (4) (3) (read)  
 (1) .

PLC (4) PLC (4) 가 (1) 가

2 waveform) (waveform) (phase) , (information) (sweep) ( - dB , 3 , 0dB 1 가

1 3

, / (2) (1) 가 /

(3) / (2) /

(4) 2 (3) / (1) (read) (read) , PLC

가 PLC (4) (1)

PLC (4) 가 (1) 가 (5) 3 (1) (100kHz~400kHz)

(100kHz~400kHz) ( , )

/ , / , / , / (PLC) (matching)

1 2 , 1 , 2 ,  
 1 , 2 (PLC)  
 C) ng) (PL  
 (matchi

1 , 2

(matching) (PLC)

2 (waveform) (phase) , (sweep) (wa  
 veform) (information)  
 , (110) , / 4 (120) , (130) , PLC (140) , (150) ,  
 (160) , ( )

/ (120) (110) 가 /

(130) / (120) /

PLC (140) (130) /  
 (read) 3 (110)

(150) (110)  
 (150) PLC (140) 가 (matchin

g)

(160) ,  
 (150) (matching)

5 4 , (160) (110)  
 1 (161) , (110) 2 (162) , 1 2 (161)  
 (162) (163) , (163) (164)

PLC 1 (161) (163) (110) (110)  
 (140) .  
 2 (162) (163) PLC  
 (140) .  
 (164) (110) (110) (matching)  
 .  
 6 4 , 7 4  
 - dB .  
 2 4 7 .  
 , / (120) (110) / .  
 , (130) / (120) / .  
 PLC (140) (130) / .  
 (140) (110) (110) , PLC  
 2 .  
 110) (110) ( .  
 (150) (110)  
 (110) (matching) (110) .  
 5 6 , (150) 1 (151) (152)  
 (110) (110)  
 PLC (140) , (150) 2 (152) (153)  
 ,  
 PLC (140) (150) (154) (110)  
 (110) (matching) 7  
 (150) ,  
 LC (140) (110) 가 (110) P  
 (matching) .

가 .

가

(57)

1.

/ , / , / /  
(PLC)

(matching)

2.

1 ,

3.

1 ,

4.

1 ,

1 ;

2 ;

1 2 ;

5.

4 ,

1

(PLC)

(PLC)  
(matching)

, 2 ,

6.

4 ,

1

7.

4 ,

2

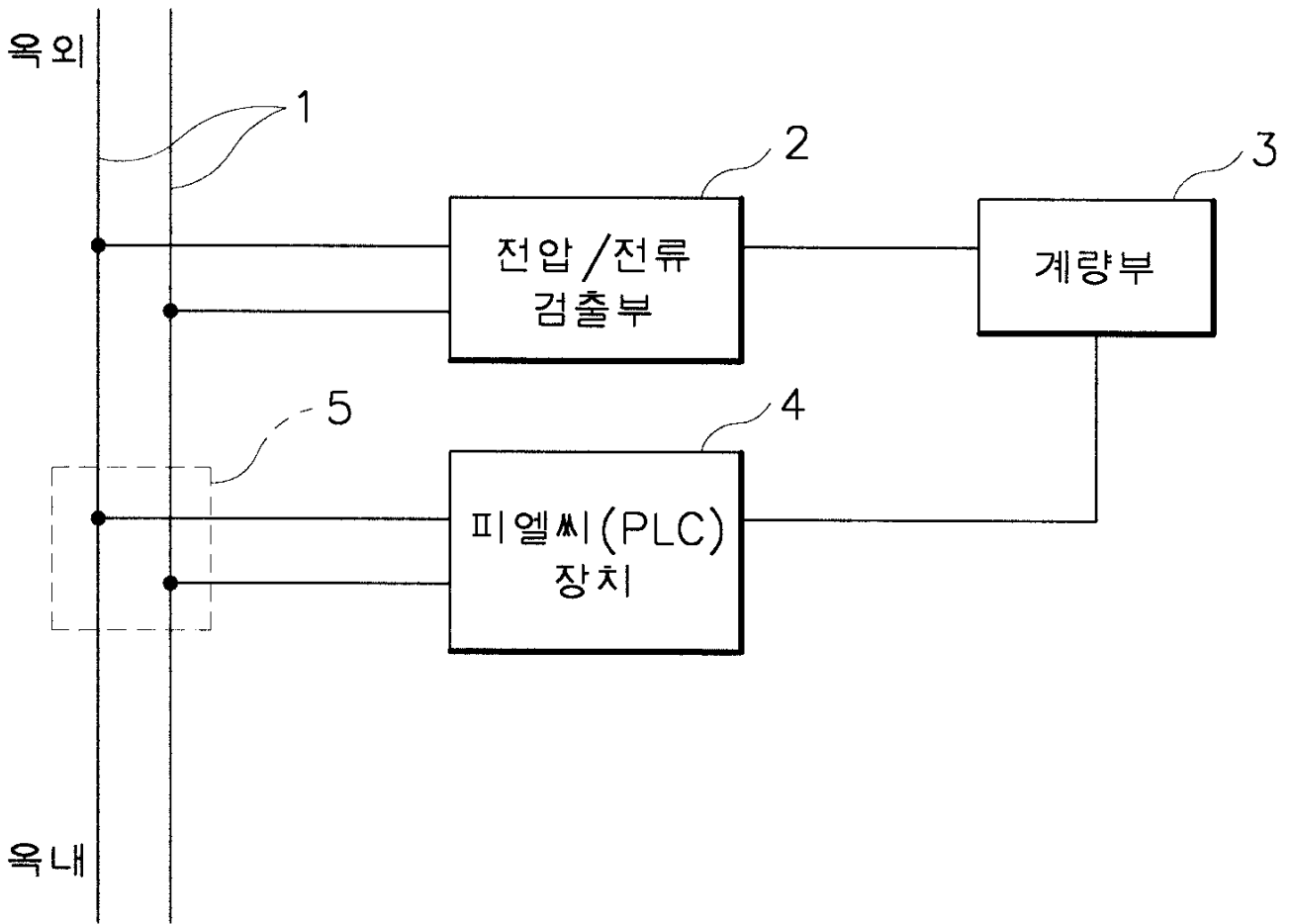
8.

1 ,

(matching)

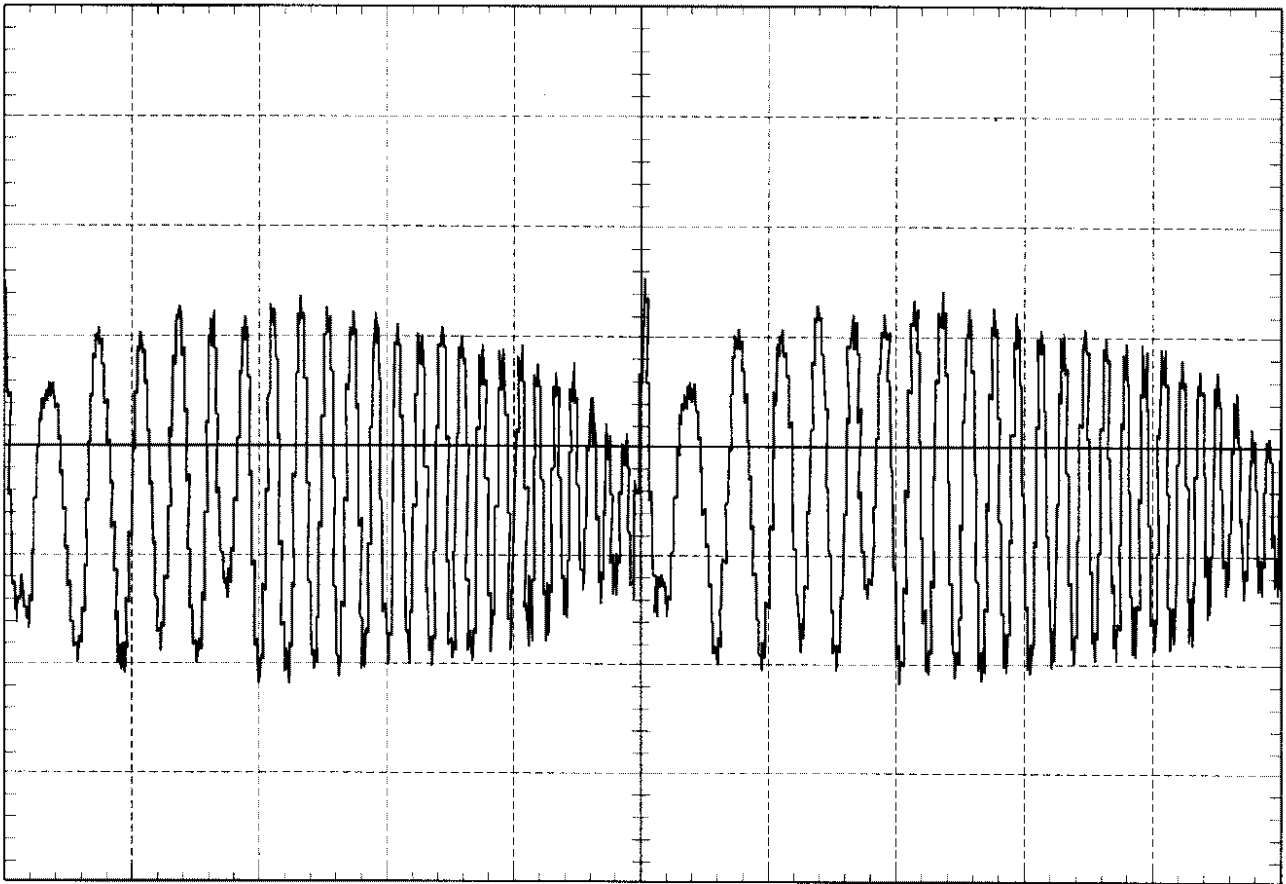
(PLC)

1

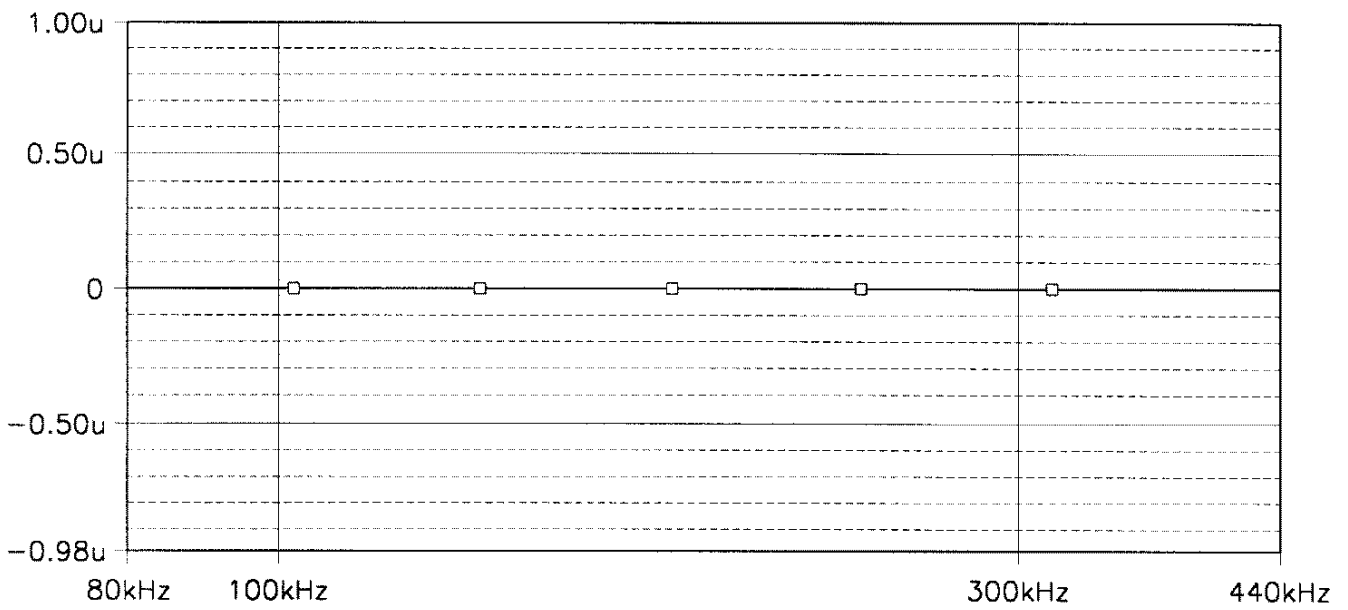


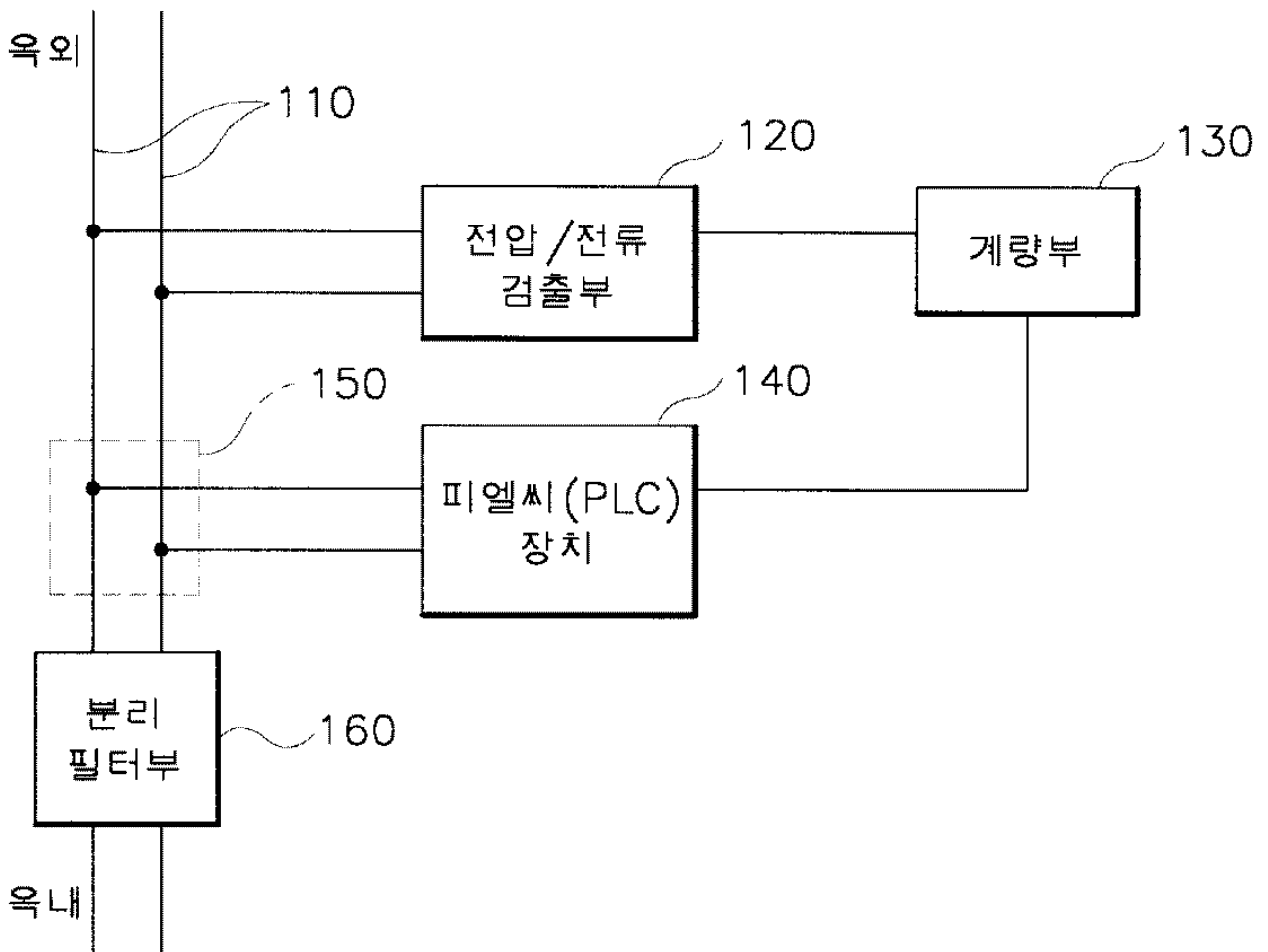


2

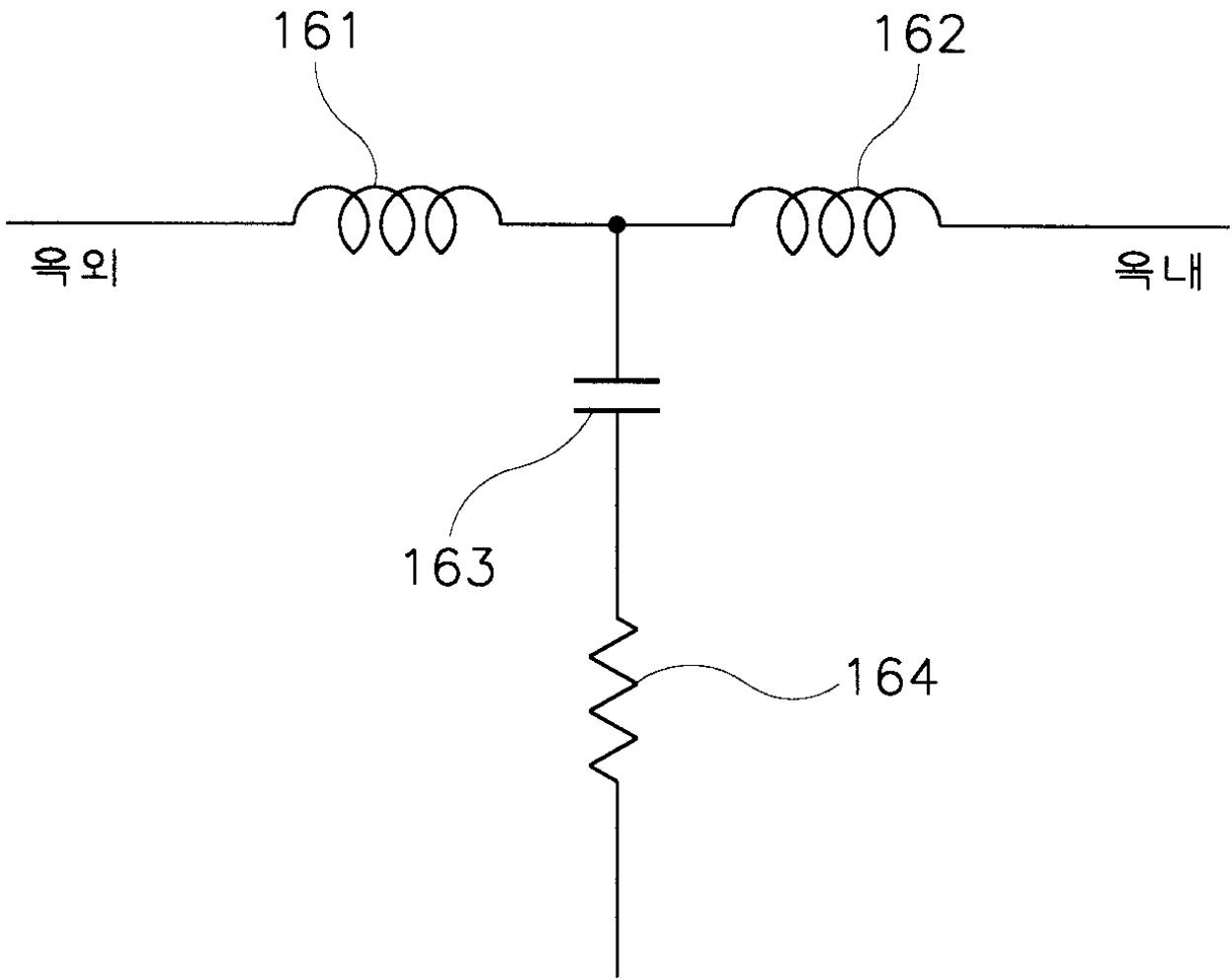


3

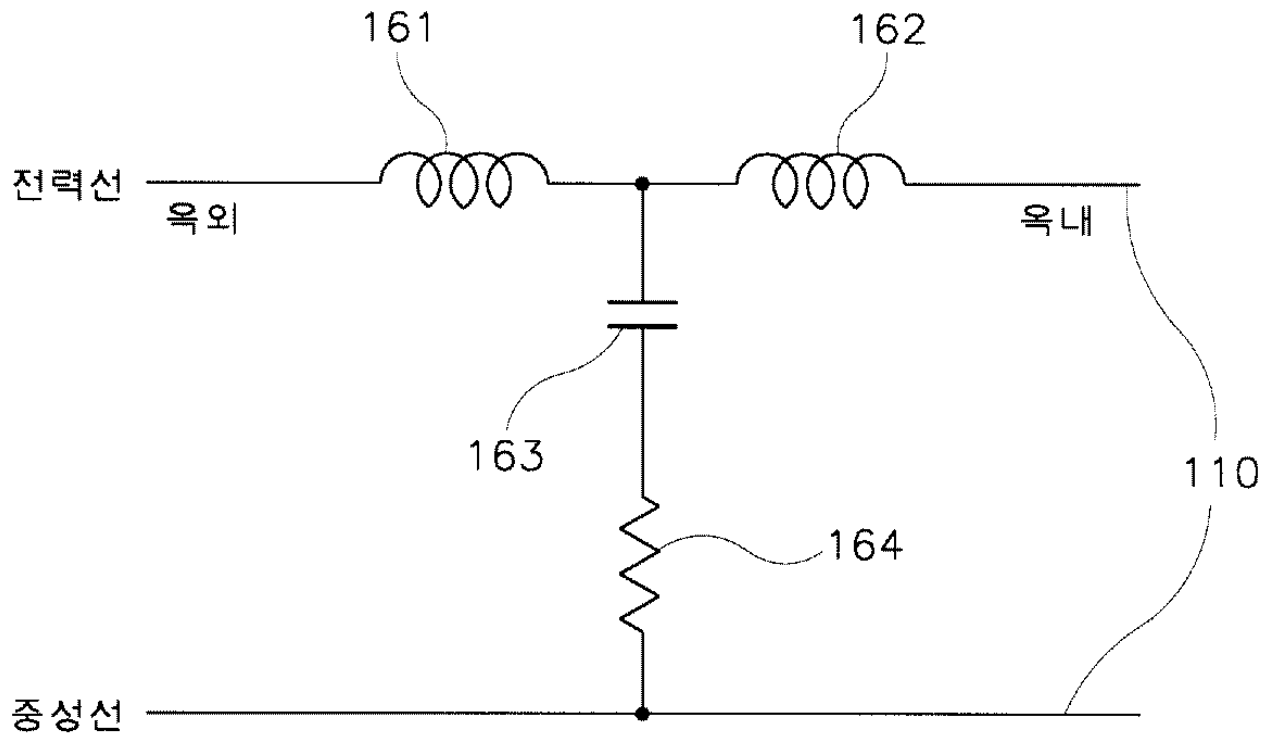




5



6



7

