

(19) (KR)
(12) (B1)

(51) Int. Cl.⁷
H01G 4/12

(45)
(11)
(24)

2004 09 08
10-0447874
2004 08 31

(21) 10-2001-0063786
(22) 2001 10 16

(65)
(43)

10-2002-0030036
2002 04 22

(30) 1020000060601 2000 10 16 (KR)
1020000066008 2000 11 08 (KR)

(73) 124

(72) 1 314

12 304 505

611 1008

(74)
:

(54)

(BaTiO₃) 80 96wt.%, (CaZrO₃) 1 10wt.%, (SnO₂) 1 10wt.%
(PVA) 1 10wt.% (11) , (11) 1 (12)
2 (13) 1 (12) (14) , (11) 2 (13)
(15) (16) , (11) (21) ()
18) 1 (22) 2 (23) 가 ,

1
 2 1 가 ,
 3a 3d 1 ,
 4a 4b 1 ,
 5
 < >
 11: 12: 1
 13: 2 14:
 15: 16:
 21:

(ceramic capacitor)

(coupling)

(network)

(film)

(home network) 1MHz

가 가가 가 가 가

AC 13.2kV DC 20kV

O_3) 80 96wt.%,
10wt.%

(CaZrO₃) 1 10wt.%,

(SnO₂) 1 10wt.%

(BaTi
1

2

1

2

1

가

1

2

(11) (21) (11) (11a) 1000 (11)
) (11b) 65 75wt.% 25 35wt.% (SiO
 2) (Al₂O₃) (11) 1
 (12) 2 (13) (11) (BaTiO₃) 80 96wt.%, (CaZrO₃) 1 1
 0wt.% (11) (SnO₂) 1 10wt.%
 P 4278A, :) 2500pF 3000pF LCR Meter(:H
 0.4% 5
 2500pF 3000pF 1 43MHz -3dB
 10Mbps 5 15MHz
 Network Analyzer(: HP 8753CS, :)
 Withstanding V Tester(: TH-10010 ARDMPS, :)
 DC 40kV 1.5 62.7 91.9 kV DC 10
 가 가
 1Mbps (6 8MHz), 2Mbps (2 4MHz) 10Mbps
 (5 15MHz) 가
 가

(57)

1.

(ball milling) (BaTiO₃) 80~96wt.%, (CaZrO₃)
 1~10wt.%, (SnO₂) 1~10wt.% (binder) (PVA) 1~10wt.%
 40~100
 (ton) 1280~1350 ;
 2 (Ag) ; 1 BNC
 ;
 가
 1 2

2.

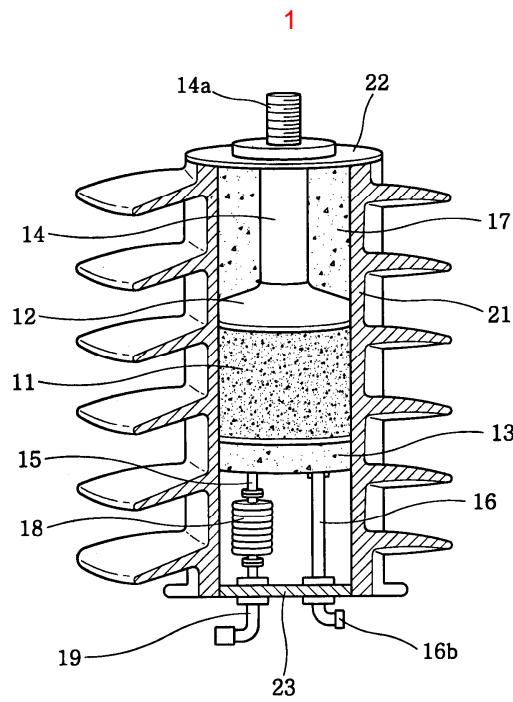
3.

4.

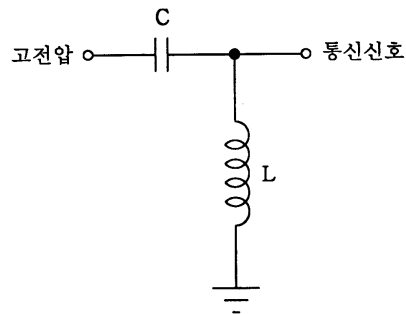
5.

1 , EPDM

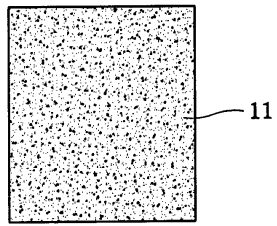
6. 1 가 , 1 2 -
7. 6 1000 - 6
 5 75wt.% 25 35wt.%
8. 7 (SiO₂) (Al₂O₃)



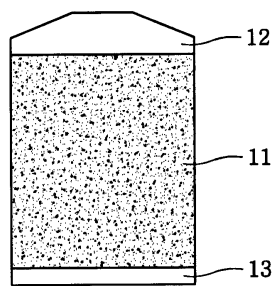
2



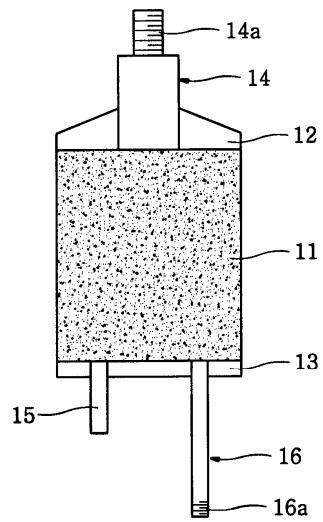
3a



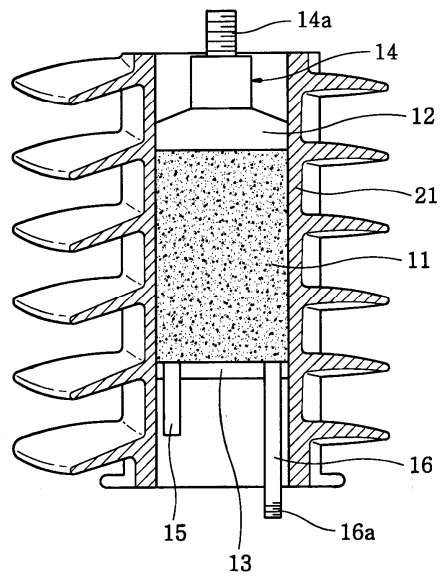
3b



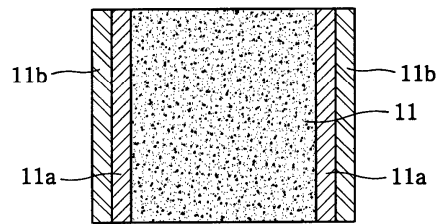
3c



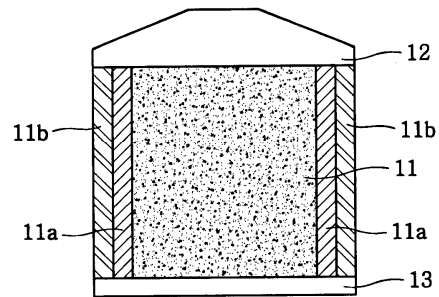
3d



4a



4b



5

S₂₁ 특성 (Coupling Transformer)

