

(19)
(12)

(KR)
(B1)

(51) 。 Int. Cl.⁷
H01G 4/12

(45)
(11)
(24)

2004 09 08
10-0447873
2004 08 31

(21) 10-2001-0063787
(22) 2001 10 16

(65)
(43)

10-2002-0083404
2002 11 02

(30) 1020010022738 2001 04 26 (KR)

(73) 124

(72) 1 314

12 304 505

(74)

:

(54)

, (BaTiO₃) 80 96wt.%, (CaZrO₃) 1 10wt.%, (SnO₂) 1
10wt.% (PVA) 1 10wt.%
(11a,11b,11c) (11a,11b,11c) (11a,11b,11c)
, (12b) (12b)
, (11a,11b,11c)가 (11)

1

, , , , ,

1 가
 2 가
 3a 가
 4 가
 .
 < >
 11: 12b:
 13: 13a:
 14: 15:
 15a: 16: BNC
 17: 18:
 21:

(network)

(film)

(home network) 1MHz

가 가가 가
 가

PLC

AC 13.2kV DC 20kV

(BaTiO₃) 80 96wt.%,
 (PVA) 1 10wt.%

(CaZrO₃) 1 10wt.%,

(SnO₂) 1 10wt.%

가

가

1 가
 10wt.%, (SnO₂) 1 10wt.% (BaTiO₃) 80 96wt.%, (PVA) 1 10wt.% (CaZrO₃) 1
 b,11c) (11a,11b,11c) (12b) (11a,11b,11c) (11a,11b,11c)가
 (11) 가
 L) 2 (11), (L) (21) (11) 1
)가 (C) (L) (C) (C1,C2,C3)
 (L) (C) (13) (21)
 (18) (13a) (21)
 가
 2 (C1,C2,C3)가
 3a 3e
 %, (SnO₂) 1 10wt.% (BaTiO₃) 80 96wt.%, (CaZrO₃) 1 10wt.
 c) (11a,11b,11c) (ball milling) (11a,11b,11c)가
 (CaZrO₃) 1 10wt.% (SnO₂) 1 10wt.% (binder) 가 (spray) 가
 (PVA) 1 10wt.% 가 (dry type) 가 (press) 40 100 (ton) 1280 1350
 (11a,11b,11c) (11a,11b,11c)가
 (crack) (11a,11b,11c) (12a) (Ag) 85% 3b (Ag Pas
 te) , 800C° (12b) (cream solder) (preform solder) (11a,11b,11c)
 (silk print) (11a,11b,11c) (12b) (12b) 3c 가
 (11a,11b,11c)가 (11) 가
 (12b) 250 300 가 30 5 60 (11)
 (11a,11b,11c) (11) (Flash over)
 (11)가 3d (11) (12b)
 (12b) (13), (14) (15)가 (15a)가 (16)
 3) (13) (15) (13a) () (15) (16)
 (15a) BNC (16)가 (13) , BNC (16)
) (12b) (13), (14) (15)가 3e ,
 (11) (21) (21) (18) 1
 MHz (17) (17) (17)가 (L) (14) (L) (13),
 (15) (23) (17) (15) BNC (21) (16) 1 (22) 2

wt.% (BaTiO₃) 80~96wt.%, (CaZrO₃) 1~10wt.%, (SnO₂) 1~10wt.%, (11)

가 , (12b) (11)

가 (11) 가 (11)

F 2500pF 3000pF 가 . 2500pF

) 3000pF LCR Meter(:HP4278A, :

2500pF 3000pF 0.4% , 5

10Mbps 1 43MHz -3dB

Network Analyzer(: HP 8753CS, : 5 15MHz

Withstanding V Tester(: TH-10010 ARDMPS, :)

DC 50kV 2 93.5 kV DC 10 가

가 (: HP 4329A, :) 7

10,000M

가 1Mbps (6 8MHz), 2Mbps

(2 4MHz) 10Mbps (5 15MHz)

가

가

(57)

1.

(BaTiO₃) 80~96wt.%, (CaZrO₃) 1~10wt.%, (SnO₂) 1~10wt.%,
(PVA) 1~10wt.%;

(Ag)

250 ~300

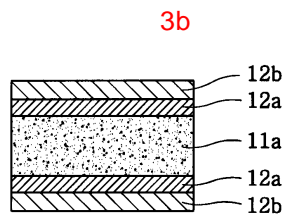
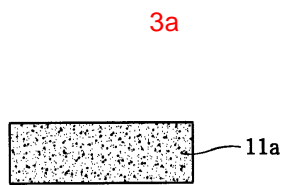
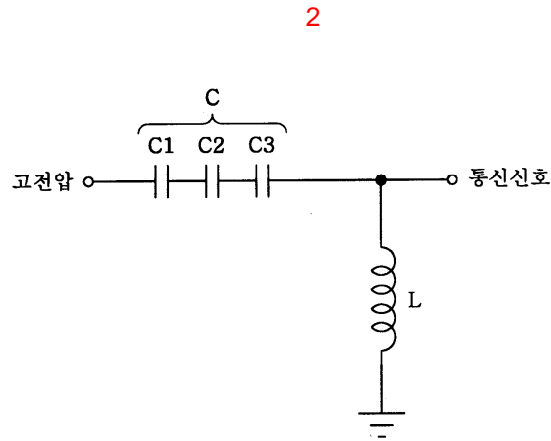
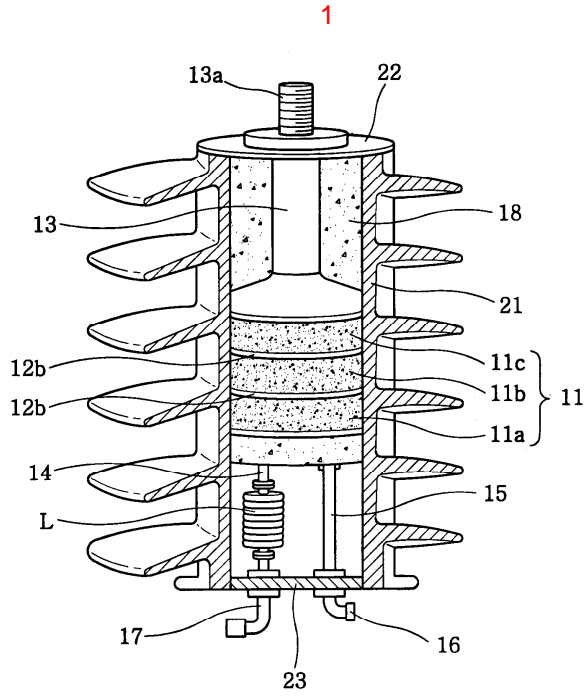
가 30

가
5 ~60

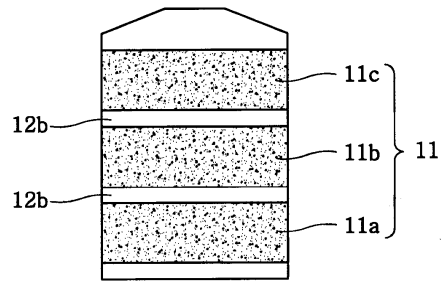
2.

3.

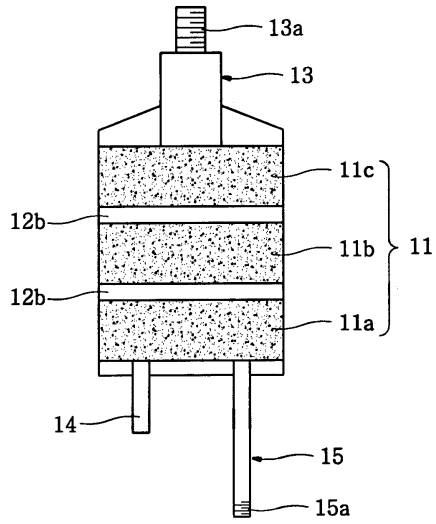
4.



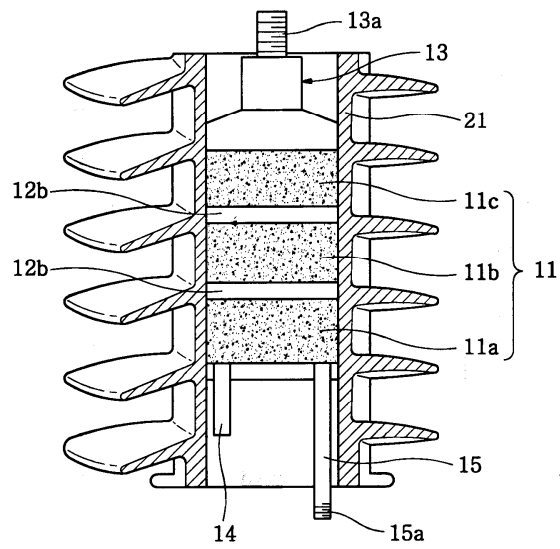
3c



3d



3e



S₂₁ 특성 (Coupling Transformer)

