

(19)  
(12)

(KR)  
(B1)

(51) 。 Int. Cl.<sup>7</sup>  
H04B 3/54

(45)  
(11)  
(24)

2004 05 03  
10-0429584  
2004 04 19

(21) 10-2002-0019980  
(22) 2002 04 12

(65)  
(43)

10-2003-0081648  
2003 10 22

(73)

4 873-29 4

(72)

893-26 604

2 951-27

(74)

:

(54)

(analog front-end)

, / ;  
/ ;

, 2 , 2

, / /

6

, , PLC, AFE

1  
 2  
 3  
 4 3  
 5 4  
 6 1 /  
 7 6 1 /  
 8 2 /  
 9 8 2

610, 810 :  
 611, 811 :  
 612, 812 :  
 613, 813 : /  
 620, 820 :  
 621, 821 : /  
 622, 822 :  
 623, 823 :  
 630, 830 :  
 T2, T3 :

(analog front-end)

1 (1) (2) (110) (2) (100)  
 (120) (110) (2)  
 (110) (2) / (11) (112) (113) (130) (120)  
 / (121) (122) (123) (130)

2 T1 , D2 D3 가 F1 , D1 , R1 , C1 ,  
 (130) (T1) 2 /  
 (113) (C1) (T1) (T1) (123) (F1) ( )  
 D1), (R1), (D2, D3) (T1) (123) , 3  
 2 , 3  
 / / (123)  
 4 3 (T1) 2 (420) (430)  
 (420) (T1) 2 (T1) 2

(430) (420) (430) (421) (431) (422) (432) / (423) (433)

(T1) 2 (421) (422) 2 2 가 5 (421a, 421b)가 (422a, 42

2b)가 가 가 가 가

가

;

;

1 2 2 ; 2

1 1 ;

2 , 2 2 2

6 1 / /

( ) (610) , (610) (620) , (620)

(630) (610) (630) (611) , (611)

(612) , (612) (613)

(620) (621) , ( ) / (622) , (622) (623) , (623) (6

22) (T2) 2 EMI(electromagnetic interference) 가

(613) (610) / (611) (620) (612) / (621)

(622) (630) (623) /  
 (630) (610) 50Hz, 60Hz 220V  
 (C1) (T2) (630) (620)  
 가 가  
 가 (630) (F1) , (D1, D2) ,  
 (C1) (T2) , (C1)  
 (T2) 1 2 2 가 (C1) (R1) (T2) , ( )  
 (610) 2 , 2 ( 2 가 ) (620) 2 )  
 , 2 가 (610) , 2  
 가 (630)  
 1) , 가 50Hz, 60Hz 220V (F  
 (C1) (T2) (T2) 1 2 , (620)  
 가 가 가 (620) , (61  
 0) (F1)가 2 (D1, D2) , 가 가  
 (611) , (611) (6  
 11) 가  
 (612) (611)  
 / (613) (612)  
 ( )  
 , / (621) , ( ) (622) /  
 (621) EMI  
 (623) (620) (T2) 2  
 (T2) 1 , 1  
 7 6 / 5  
 가 8 2 / /  
 (830) (810) (811) (810) (820)  
 (813) , 6 (812) /  
 / (612) (821) / (613) (823) 6 (612)  
 (821) / (822) (621) (823) (622) (623)  
 2 (T3) 1 가 2  
 , 2 (810) (810)  
 , 2 (820) (820)  
 9 8 6 가 2  
 가 가 / 5 7  
 가

(57)

1.

/ ; /

2.

1 , 1 2 , 2 ,

3.

1 , 1 2 ,

4.

1 3 , , /

5.

1 3 , , / EMI

6.

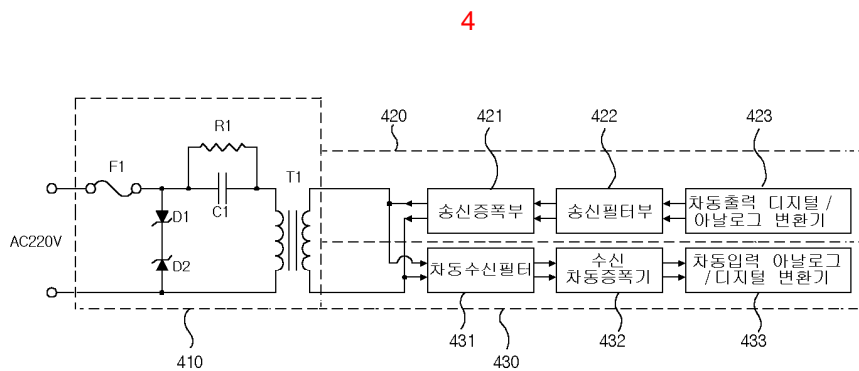
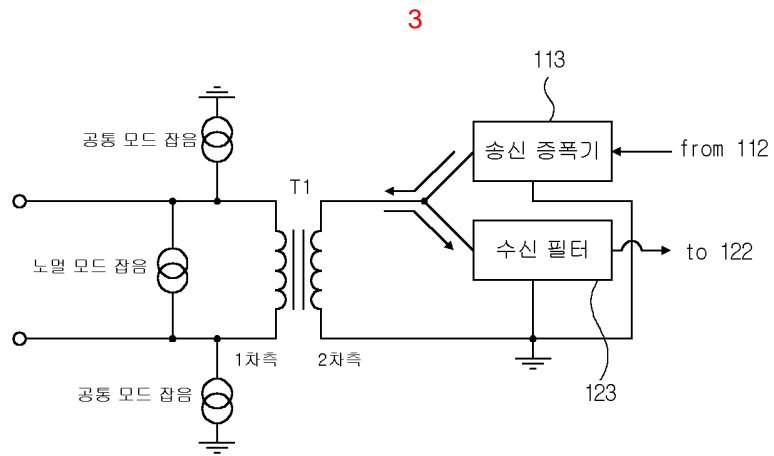
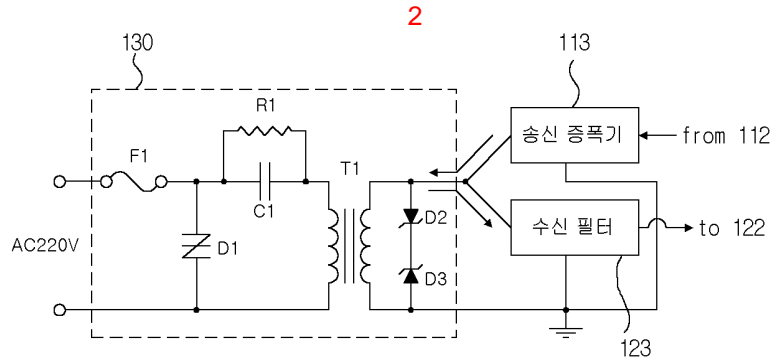
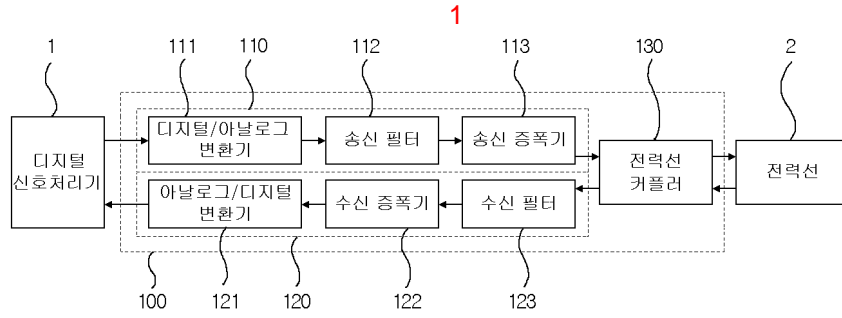
1 2 2 ; 2 1

7.

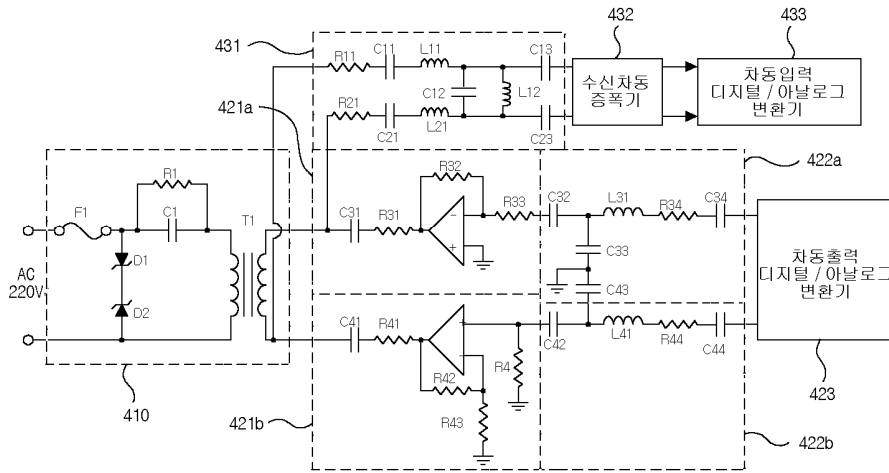
6 , 1 2 , 2

8.

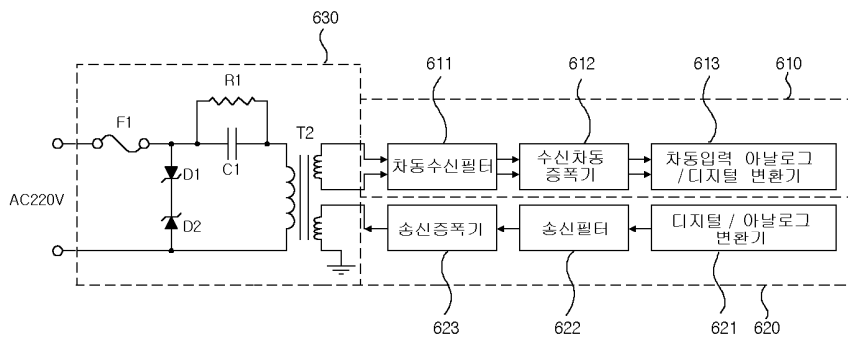
6 , 2 1 ,



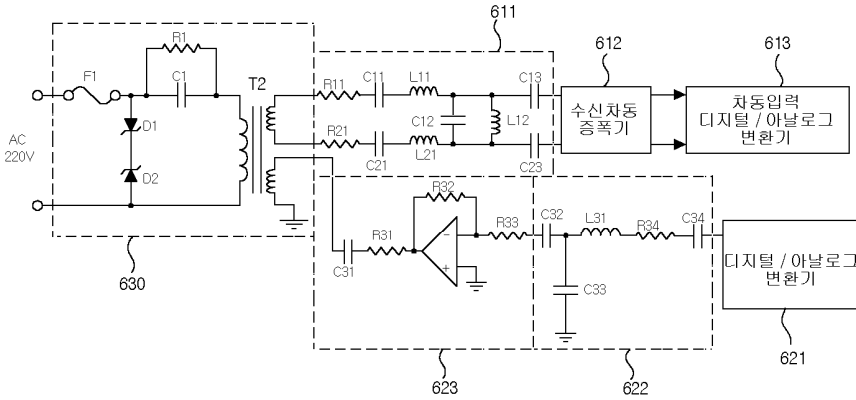
5



6



7



8

