

(19) (KR)
(12) (A)

(51) 。 Int. Cl.7
H04B 3/56

(11)
(43)

2003-0097818
2003 12 31

(21) 10-2003-7012760

(22) 2003 09 29

2003 09 29

(86) PCT/US2002/05508

(87)

WO 2002/80396

(86) 2002 02 25

(87)

2002 10 10

(30) 60/279,939 2001 03 29 (US)

(71) , 02446, , 1033

(72) , , 02446, , 1405

(74)

:

(54)

1 가
2 가, 1 가
2 가 , 가
2 가 , 가

1c

, , , , ,

(OFDM, Orthogonal Frequency Division Multiplex)
(DSSS, Direct Sequence Spread Spectrum)

가 1 50 MHz

가 (DT) 2

(shunt coupling)

1a 1b $Z_T(108)$ 가 2 (130) 가 (135)
(113) $R_S(112)$ 가 A(110)

1b $|Z_T| \ll R_S$, $Z_T(108)$ A(110)
 $Z_T(108)$ 가 $Z_{Lrefl}(\quad)$ A(110)가 가 가
A(110) Z_{Lrefl} B(140) $Z_T(108)$

(coupler) 가 1
1 2

가 2 가 1 2
1/10 1 2 가 1 2
1 1 2 가 1 2 가 2
1/10 1 2 1 2

가

1
2
1
2
가 1
가 1
2
2
1
2
가
가 1
2

1a 1b
1c 1d
1e 1f 가
1g
2
3a 3b
4
5
6

(MV) 09/752,705 가 2000. 12. 28.

1c (120) (DT)(135) 1d 가 (115)
(120) (135) 2 (130) (120)
(115) 1/10

1d 8, $|Z_T|$ (108) (120) A(110), 2 Z_T (108)
(115, 116) Z_L (160) B(140) Z_{Lrefl} (165)
1d 가 Z_{Lrefl} (165)

가 2 Z_T (108)가, Z_T (108) Z_{Lrefl} (165)
가 Z_T (108)가 I_L (170)

1e 가 1f $|Z_T|$ (108)가 1c 1d
1e

Z_T (108) (125) (135) 2 (130) 1f (125)
 , A(110) , Z_T (108) , (120) ,
 2 (120C) (120A), Z_T (108) (120B) (120B)
 (125)가 2 (125) ,
 , 60Hz , 10 nF 1MHz 16 , 10MHz 1.6
 250
 2 , 2 A 가
 40 A , B 10 nF 가 2 A 가
 , 2.8 3.9 MHz 16.3 30 MHz 가
 B 10 , DT 2 10 nF ,
 10
 (115) (1e) , Y 3- -Y- 가 2-
 , (116, 117) RF (120)
 (116 117) (115)
 (145) , (120) (115) ,
 () () ;
 (120) (120B)
 1g , 3 (170) 3 (175, 180 185) (120) 3
 , (175) , (180, 185)
 (125) (170) 2 가 (170) 2 가
 가 가
 3a 3b , , (a)
 , (b)
 (c) , 1e 1f - MV 3a , A(110)
 , (303)
 , (332)
 , (315, 320, 325) , (332)
 가 (333)가 (332)
 (334)
 (332) , RF (360)가 (332)
 가 (365) (365 370)
 (310) (332) (370) (332) (360) (360)
 , A(110) (310) (332) 가 (332)
 (311) (332) (332) (365)
 , (332)
 (365, 370) , (a) , (b) -
 , (375) (375) -
 , (360) (375)

3b, 3a (385), (315, 320, 325), (380), (XX, YY, ZZ), (315, 320, 325), (380), (XX, YY, ZZ), (315, 320, 325)

4, (435), (HV-MV), (405, 410), MV, (405, 410), LV, (435), MV-LV, LV-LV, (405, 410), MV, (405, 410)

LV, 4, DT, (440, 450), DT(435), 2, (440, 445), DT(435), (405, 410), (445), (410), (440), 4, (405, 410)

(125, 415) 가, (405, 410), (440, 445), 2, (410), 1, a(425), 1b(426), (405), 2A(430), 2B(431)

5, Z_{Lrefl}, 5, R_{S1} 가, V_{S1} (510), (Z_{Lrefl})가, (505), /, R_{S1} (515) 가, V_{S1} (510), R_{S2} (525) 가, V_{S2} (520), 2, 1

5, (530), DT 2, (215), 1, 2, 1, Z_T, Z_{Lrefl}, Z_{Lrefl}, (120)

6, 2, (605, 610), 1c, (620, 622), (120), (615A, 615B, 615C), A(625), 615A, 615A, 615B, 615C, A(625), B(626, 631), 6, 2, 가, 가, 가

(57)

1.

2 , 2 ;

가

2.
1 , ,
1/10 , 2

3.
1 , , 2

4.
1 , 2

5.
1 , - (spread-spectrum)

6.
1 , , 2 2

7.
 , 2 ;
 , 가

8.
7 , , 1/10
 , 2

9.
7 , , 2

10.
7 , 2

11.

7 , - (spread-spectrum)

12.

7 , , 2 2

13.

1 ;

1 2 ;

, 2 1 2 가 , 1 가

14.

13 , 1

15.

11 , - (spread-spectrum)

16.

11 , 1

17.

11 , , , 1/10 , 2

18.

1 ;

1 2 ;

1 2 가 , 1 가 , 2

19.

16 , 1

20.

16 , - (spread-spectrum)

21.

16 , 1 .

22.

16 , 2 , 1/10 .

23.

가 ; ; 1 ; 2 ; 1 2 , 가 .

24.

21 , 1 2 .

25.

21 , 1 2 2 , 1 2 .

26.

23 , 2 1 , .

27.

가 ; ; 1 ; 2 , 가 가 .

28.

25 , 1 2 .

29.

25

,
1,
,

1

2

2

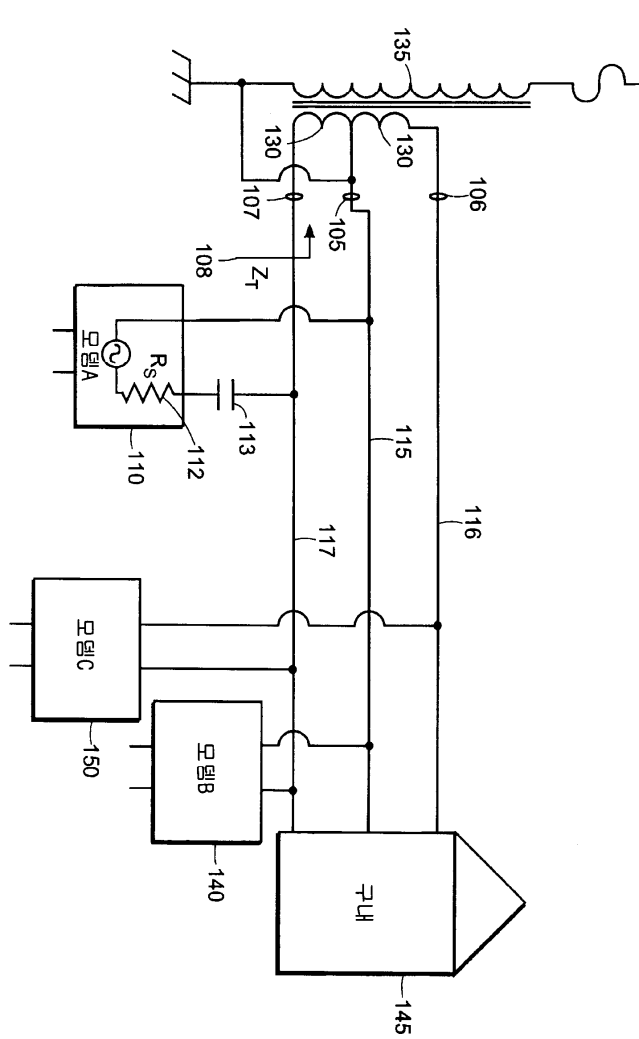
30.

27

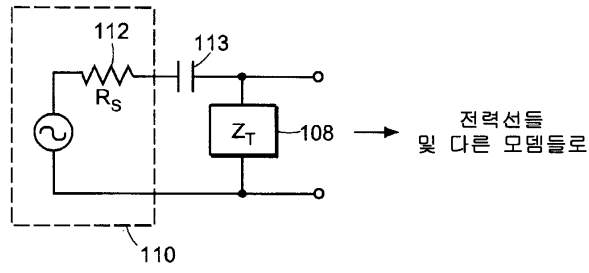
,
2

,
1

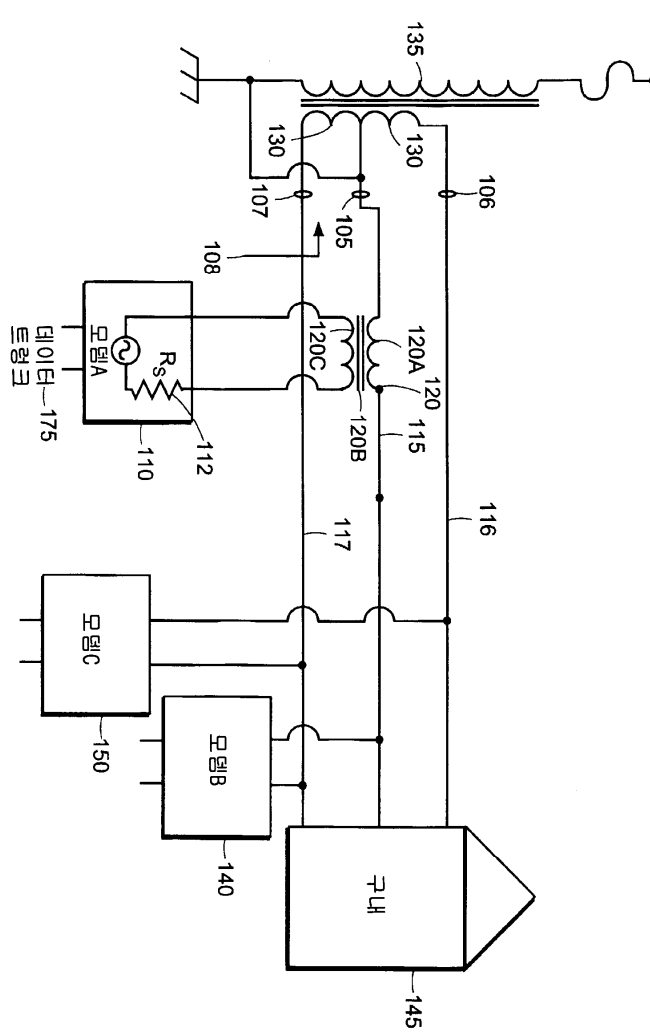
1a



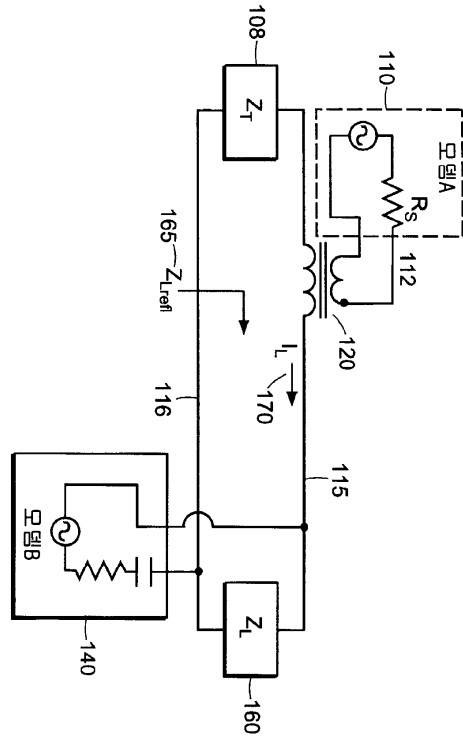
1b



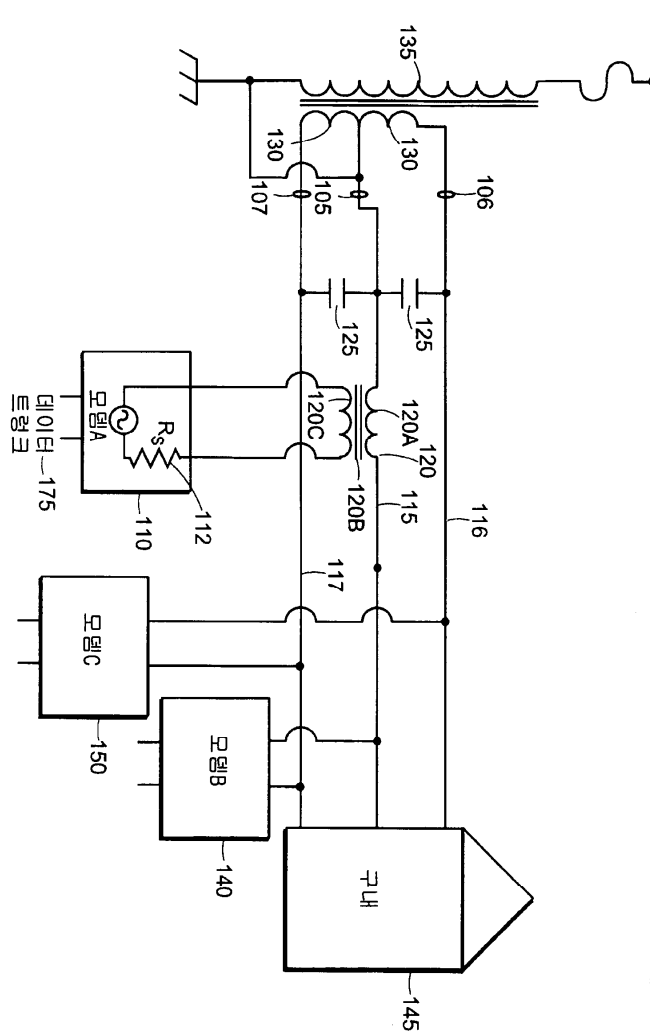
1c



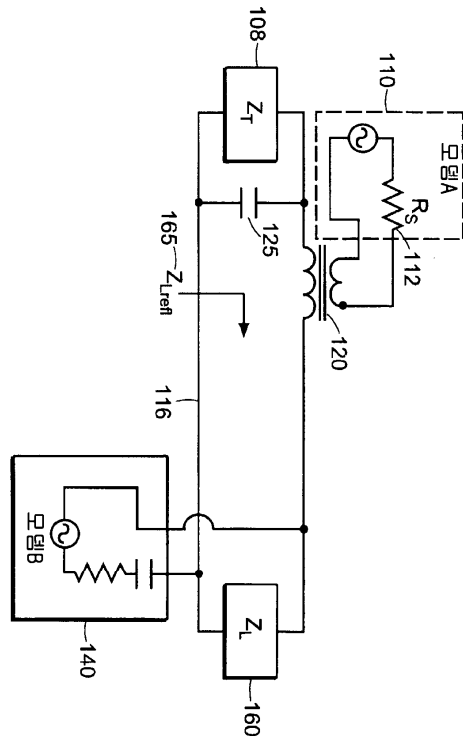
1d



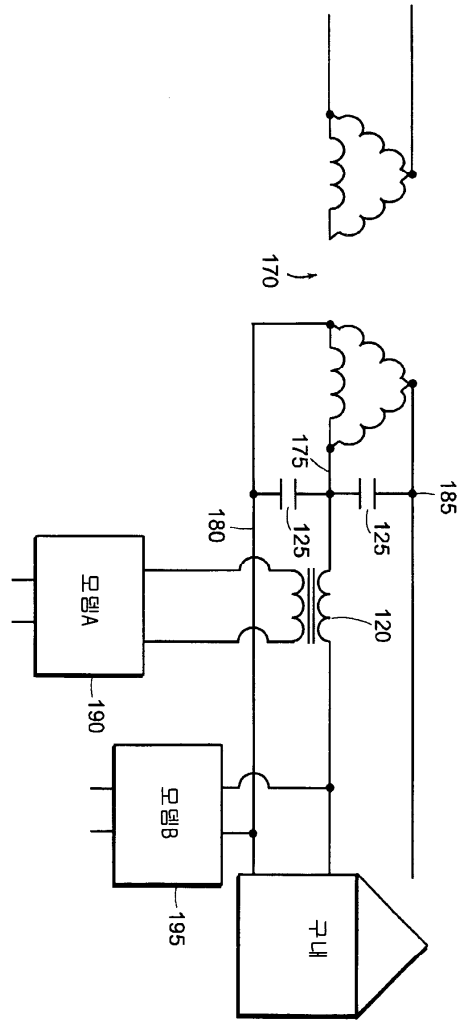
1e



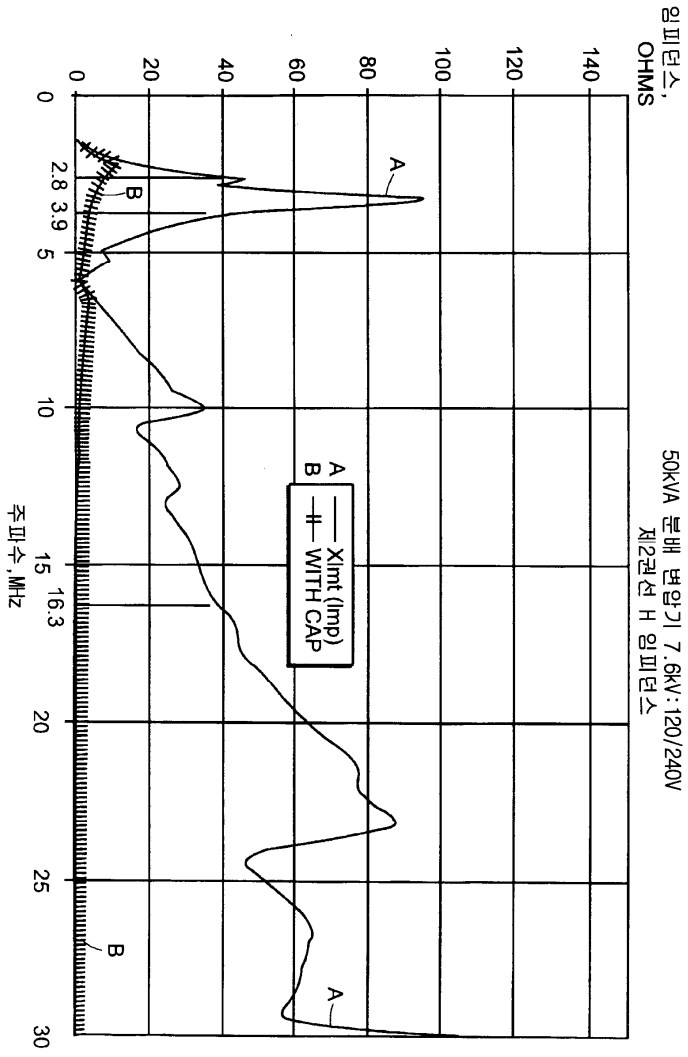
1f



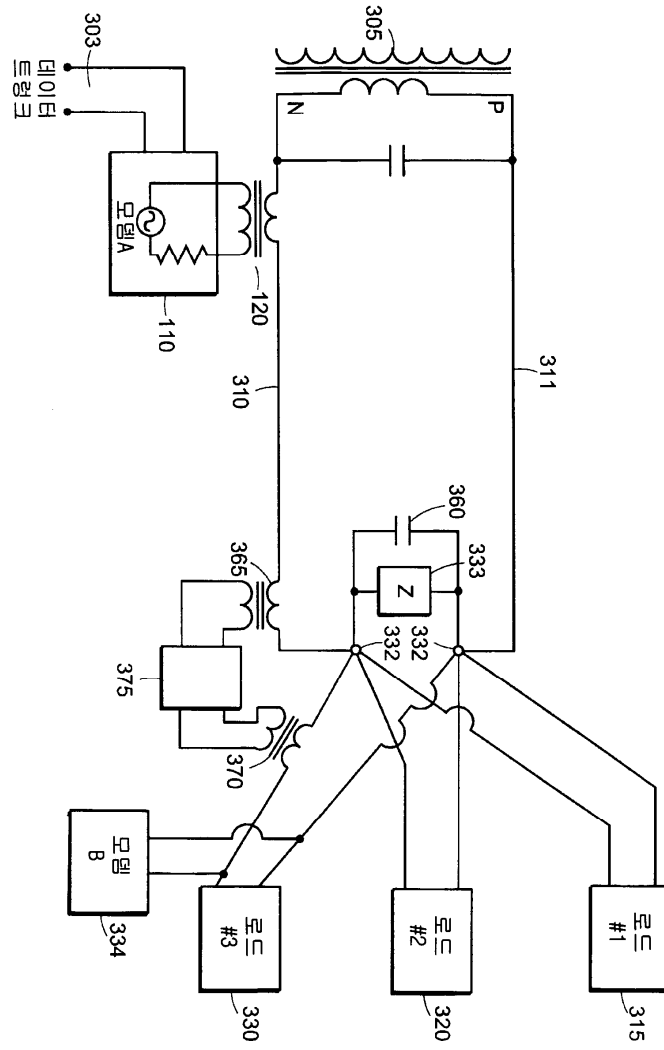
1g



2



3a



3b

