

(19)
(12)

(KR)
(B1)

(51) 。 Int. Cl.7
H04B 3/54

(45)
(11)
(24)

2004 07 30
10-0442399
2004 07 20

(21) 10-2002-0003956
(22) 2002 01 23

(65)
(43)

10-2003-0063707
2003 07 31

(73)

20

(72)

31 304

(74)

:

(54)

;

,

2

;

1 EMI

2 EMI

1

2

3 PLC

4 2 , EMI

5

EMI

1: 2:

3: 4:

6: 7:
10,20:EMI

EMI EMI

1 (1) (2)

(2) ; (3)

(4) ; (4) (3)

(7) (6) EMI (5)가

(2) (1)

(3) (3)

(4) EMI (5)

(4) (6)

(6) (4)

(7)

EMI AC220V EMI

가

;

;

1 EMI ; 2 EMI

2 (1)

(2) ; (2)

(3) ; (3)

(4) ; (4) (3)

(6) ; (6) (3) (4)

, (3) 1 EMI (10) ; (4)
(6) , (4) 2 EMI (20)
, , (2) (1)
, (3)
, 1 EMI (10) (3)
, (4) , 1 EMI (10)
, , (4)
, 2 EMI (6) 가 (4) 가
, (6) 2 EMI (6)
(7)
, , 1 EMI (10) EMI (10),(20)
(3) , 2 EMI (20) (3) (4) (4) (6)
, (4)
, 1, 2 EMI (10),(20) 가 가
, PLC 3
1, 2 EMI (10),(20) , 4 (L1,L2,L3) (C1,C2,C3)
, 1, 2 EMI (10),(20)
, EMI 1, 2 EMI (10,20)
L:W:H=20:10:10 , L:W:H=50:30:30
, 5 EMI
, EMI EMI DC
, 가 가가 ,
, 가 .

(57)

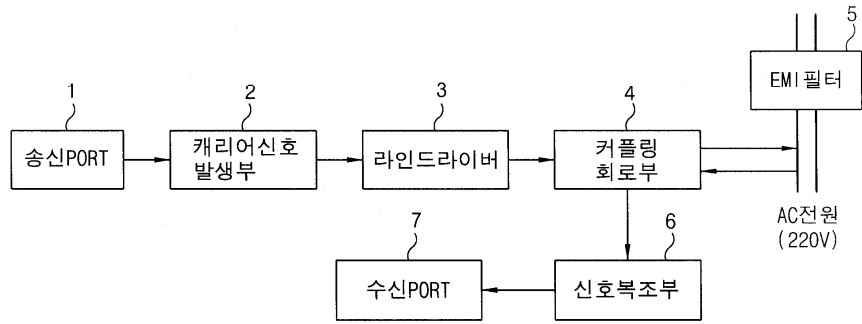
1.

1 EMI ; ; ; ;
2 EMI ; ; ; ;

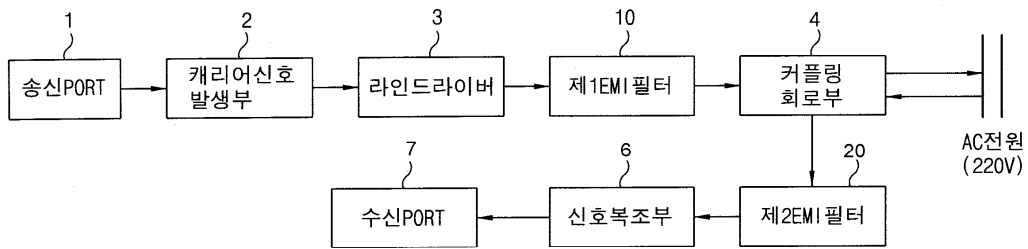
2.

1 , 1, 2 EMI , 가 가 ,

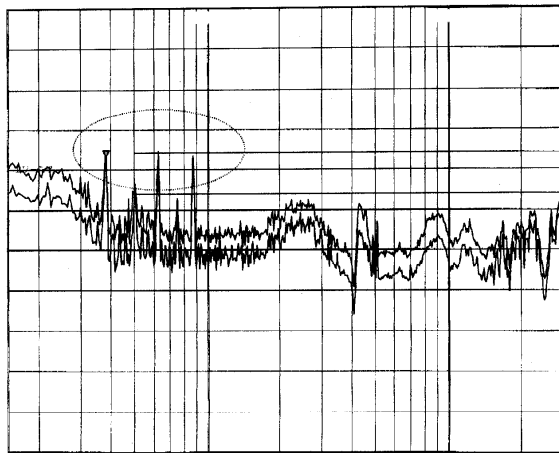
1



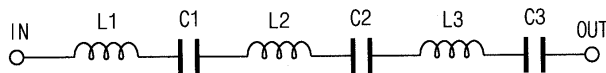
2



3



4



5

