

(19)
(12)

(KR)
(B1)

(51) 。 Int. Cl. ⁷
H04B 3/56

(45)
(11)
(24)

2002 01 19
10 - 0321242
2002 01 07

(21) 10 - 1999 - 0057451
(22) 1999 12 14

(65) 2001 - 0056050
(43) 2001 07 04

(73)

3 416

(72)

35

104 606

(74)

:

(54)

가

1 ,

2 ,

2(a) ,

2(b) ,

2(c) ,

2(d) .

<

10 : 13 :

20 : 30 :

40 :

,

가

g edge)

(fallin

0.7V

가

가

(Trigger)

가

(20) 0 (5V) (zero - crossing) (10) (1) (20) 가 (30) (Toggle) (40) (30) ,

2 (10) (1) 1 가 (11) (11) (13) (13) (D1) , (C1)(C2) , (C1)(C2) () () (5V) (15) , (15) (C3) (15)

C4) (R1)(R2) , (20) (10) (13) (R1)(R2) 가 / (TR1) , (TR1) (30) (R3)(R4) , (30) (C5)

(1) 2 (a) (10) (11) 1 가 (11) 2 (b) (13) 2 (b) (C1) (C2) , (13)

(C1)(C2) (15) (5V)
 (30) (VCC) , (30) .
 , (13) 2 (b) (R1)(R2)
 (TR1) 가 (TR1)가 .
 (TR1)가 (TR1)
 가 (30) (INT) , (30) (INT)
 2 (c) 가 .
 , (30) 가
 (DATA1) , (DATA2) (DA
 TA2) (DATA=DATA2 - DATA1) .
 , (30) ((DATA=DATA2 - DATA1) .
 DATA) (PORT) 2 (d) ((DATA=DATA2 - DATA1) .
 (60Hz) (40) ((DATA=DATA2 - DATA1) .
 , (40) (30) (60Hz)
 , , ,
 가 .

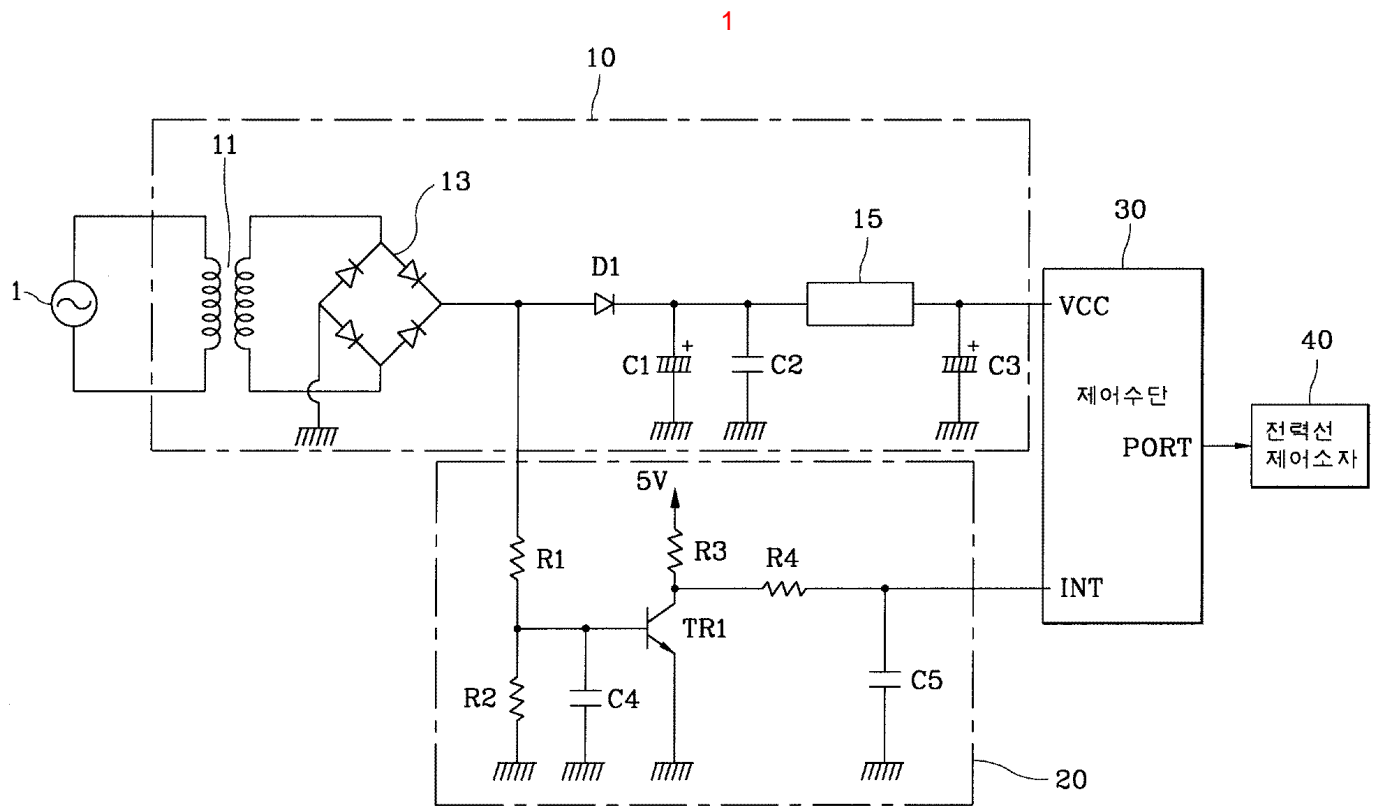
(57)

1.

2.

1 (DATA1) (DATA
 2) (DATA=DATA2 - DATA1) (DATA)

3.



2

