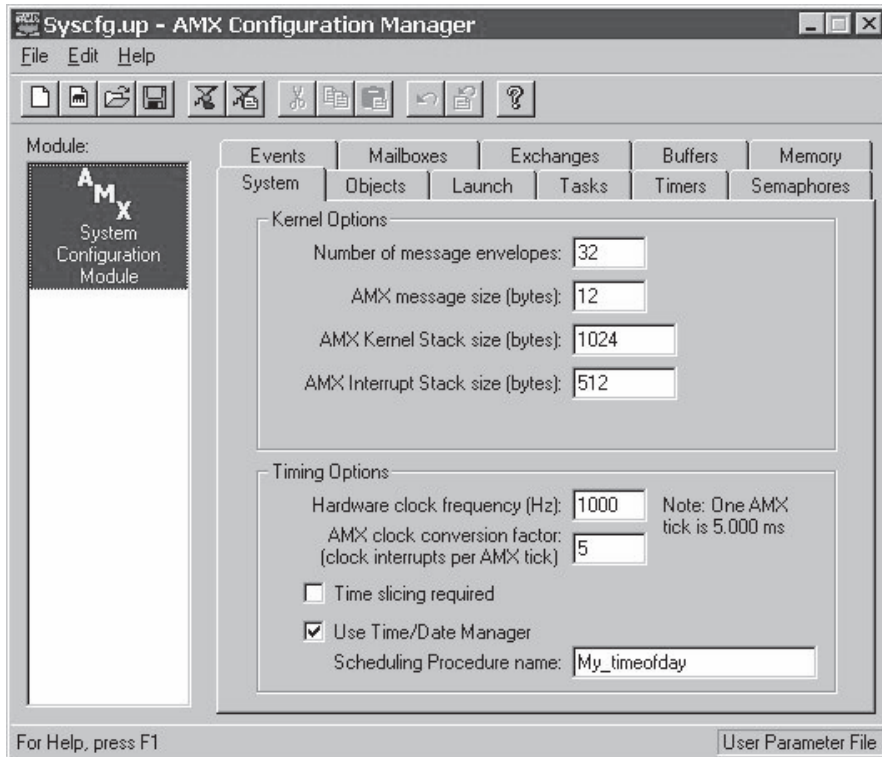




AMX™ RTOS



AMX is a full featured real-time multitasking kernel for the ARM, StrongARM and ARM Thumb microprocessor families. AMX has been tested on the Atmel AT91EB40, EB42 and EB63 Evaluation Boards.

AMX is a simple, readily understandable software development tool which meets the stringent requirements of all real-time applications. First released in 1980, the AMX family of kernels has been used worldwide at more than 2,000 embedded systems development sites.

AMX is delivered ready for development on a PC with Windows. Source code of all AMX modules is provided with AMX to permit AMX to be ported to any development platform. A sample program is provided to illustrate the proper use of many of the AMX services.

AMX is offered with a liberal site license agreement. Executable application modules incorporating AMX can be distributed without royalties.

AMX documentation is comprehensive and includes tutorial explanations and examples.

- Windows® based Configuration utility eases system construction
- Compact ROMable kernel with optimized execution speed
- Mailbox, semaphore, resource, event, list, buffer and memory managers
- KwikNet® TCP/IP Stack provides a full suite of protocols
- KwikPeg™ GUI allows you to create a graphical user interface on your embedded system
- Clear and comprehensive manuals
- No royalties; source code included
- Envable track record for reliability and support

**USA, Canada
International**
KADAK Products Ltd.
206-1847 West Broadway
Vancouver, BC V6J 1Y5
CANADA
Tel. (+1) 604-734-2796
Fax (+1) 604-734-8114
e-mail:
amxsales@kadak.com

Europe
Great Western
Microsystems
Berwyn House, Carrog
Denbighshire LL21 9AT
UK
Tel. (+44) 1490-430526
Fax (+44) 1490-430241
e-mail:
john@gwmicrosystems.co.uk

France
Netbricks
31, rue Jean Rostand
91893 Orsay Cedex,
Tel. (+33) 1 69 33 12 50
Fax (+33) 1 69 85 54 26
e-mail:
didier.raffenoux@netbricks.net

Web Site
www.kadak.com

Contacts