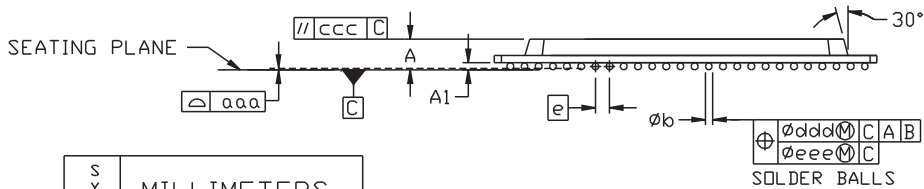
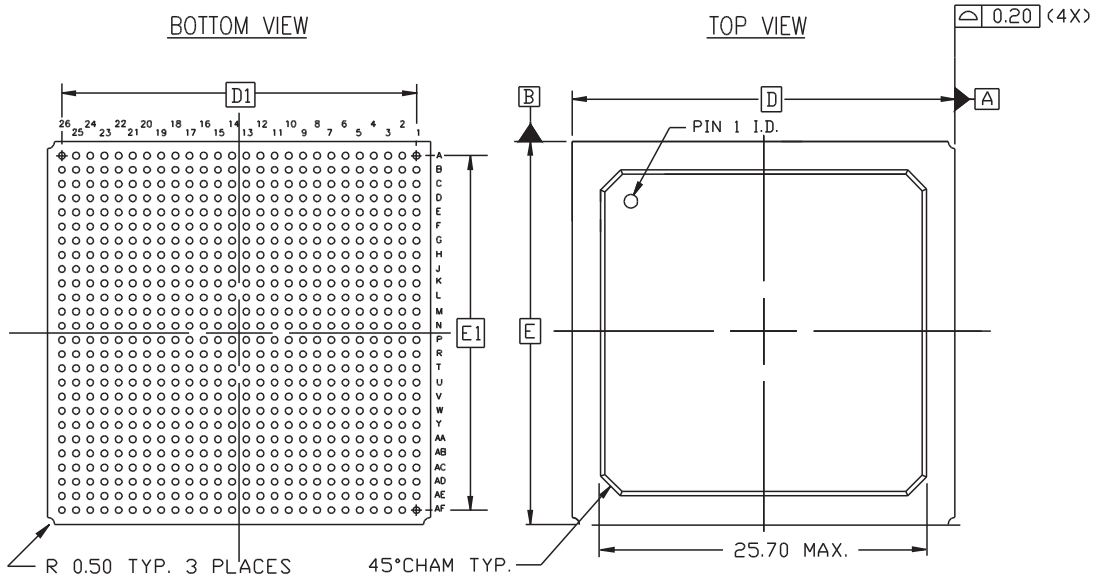


Ball Fine Pitch Packages - FG676



SYMBOL	MILLIMETERS		
	MIN.	NOM.	MAX.
A	<i>xx</i>	2.25	2.60
A ₁	0.40	0.50	0.60
D/E	27.00 BSC		
D ₁ /E ₁	25.00 REF		
e	1.00 BSC		
øb	0.50	0.60	0.70
aaa	<i>xx</i>	<i>xx</i>	0.20
ccc	<i>xx</i>	<i>xx</i>	0.35
ddd	<i>xx</i>	<i>xx</i>	0.30
eee	<i>xx</i>	<i>xx</i>	0.10
M	26		

NOTES:

1. ALL DIMENSIONS AND TOLERANCES CONFORM TO ANSI Y14.5M-1994
2. SYMBOL 'M' IS THE BALL MATRIX SIZE.
3. CONFORMS TO JEDEC MO-151-AAL-1.

676-PIN FINE PITCH BGA (FG676)